

T O W N H O M E



ESSENTIAL FEATURES

117 CORTLAND TERRACE

ORCHARD PARK MEADOWS, ST. THOMAS

THE DETAILS

PRICE	\$ 580,000
CLOSING DATE	SEPTEMBER 23, 2024
LOT NUMBER	44A
BEDROOMS	3
BATHS	2.5
SQFT	1623
GARAGE	1
MODEL	2 STOREY TOWN



SALES PROFESSIONAL

DAVE MATTHEWS
519.633.9215
dave.matthews@hayhoehomes.com

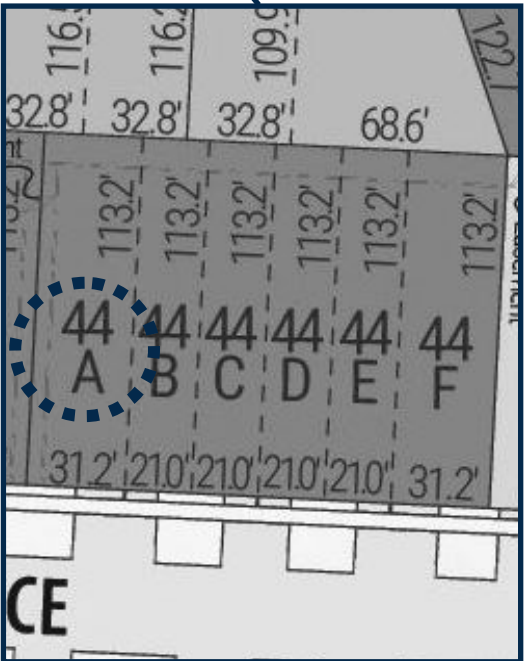
SITE PLAN



117 CORTLAND

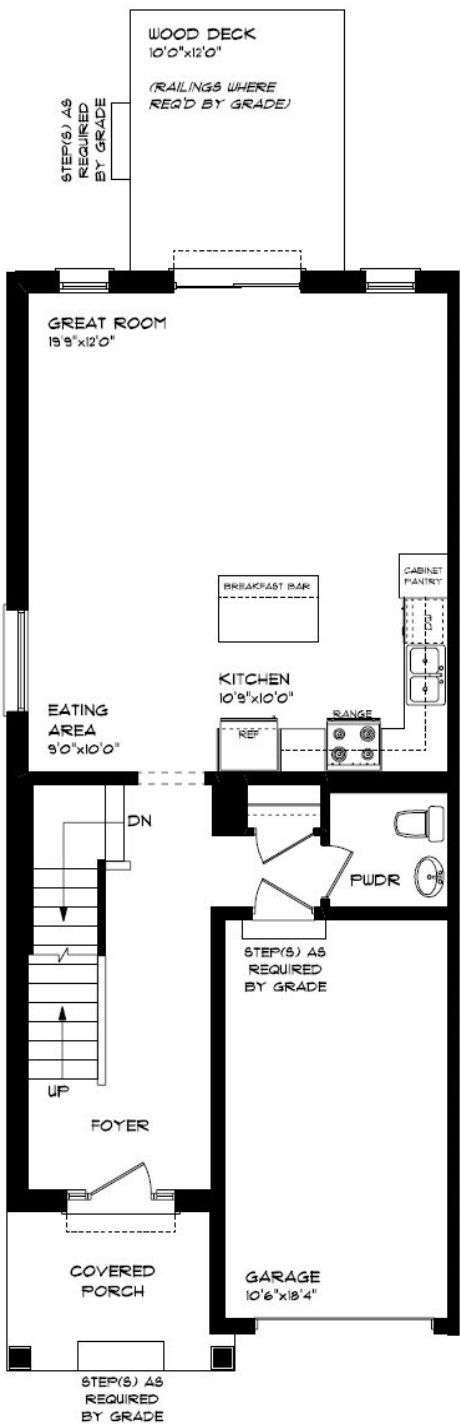
EXTERIOR FEATURES:

- KEYLESS ENTRY
- TREATED WOOD DECK
- ASPHALT DRIVEWAY
- WALKING TRAILS



MAIN FLOOR

117 CORTLAND TERR., ST. THOMAS



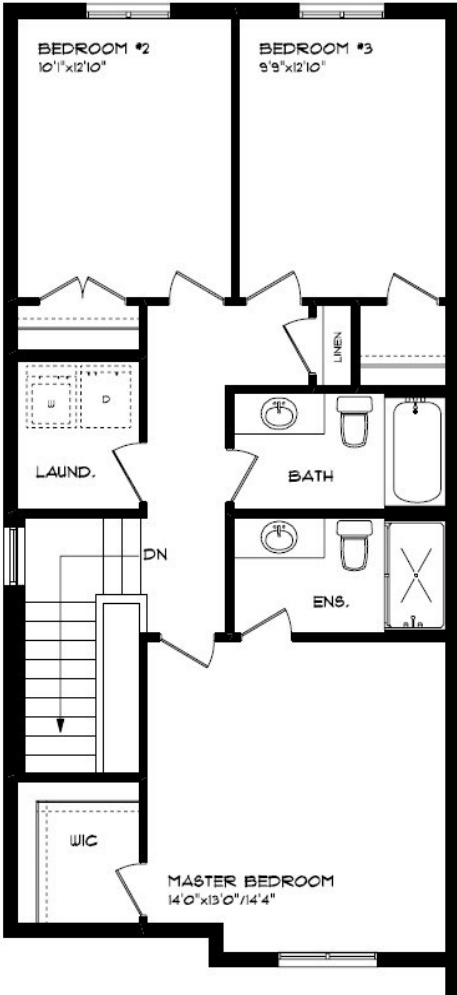
MAIN FLOOR:
APPROX 768 SQFT

- SINGLE CAR GARAGE
- KITCHEN ISLAND
- VINYL PLANK FLOORING
- QUARTZ COUNTERTOPS



SECOND FLOOR

117 CORTLAND TERR., ST. THOMAS



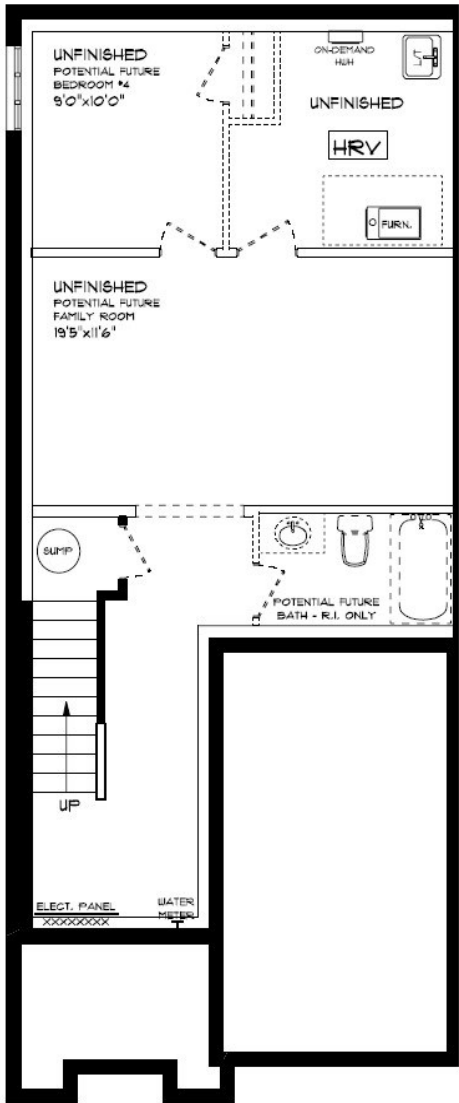
SECOND FLOOR LAUNDRY
PROFESSIONALLY DESIGNED
CARPET FLOORING
VINYL PLANK FLOORING
WALK-IN CLOSET

SECOND FLOOR:
APPROX 855 SQFT



BASEMENT

117 CORTLAND TERR., ST. THOMAS



BASEMENT:
UNFINISHED

AIR CONDITIONING
GAS FURNACE WITH HRV
HUMIDIFIER
NEW HOME WARRANTY

HAYHOE™
— HOMES —

INTERIOR FINISHES

117 CORTLAND



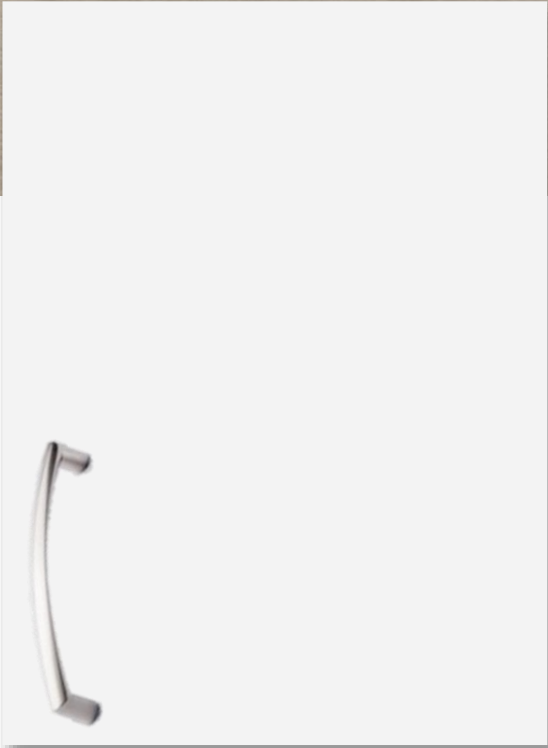
KITCHEN COUNTERTOPS



LUXURY VINYL PLANK



PAINT
COLOUR



KITCHEN
CABINETRY

ISLAND PENDANTS



FOYER
FIXTURE



PRICE, PRODUCTS, COLOURS & FEATURES ARE SUBJECT TO CHANGE WITHOUT NOTICE.
COLOURS SHOWN MAY VARY FROM INSTALLED MATERIALS. E & O.E

INTERIOR FINISHES

117 CORTLAND

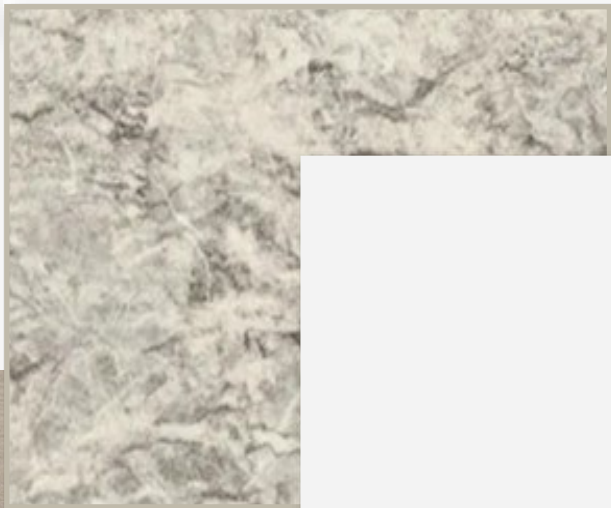
INTERIOR DOOR STYLE



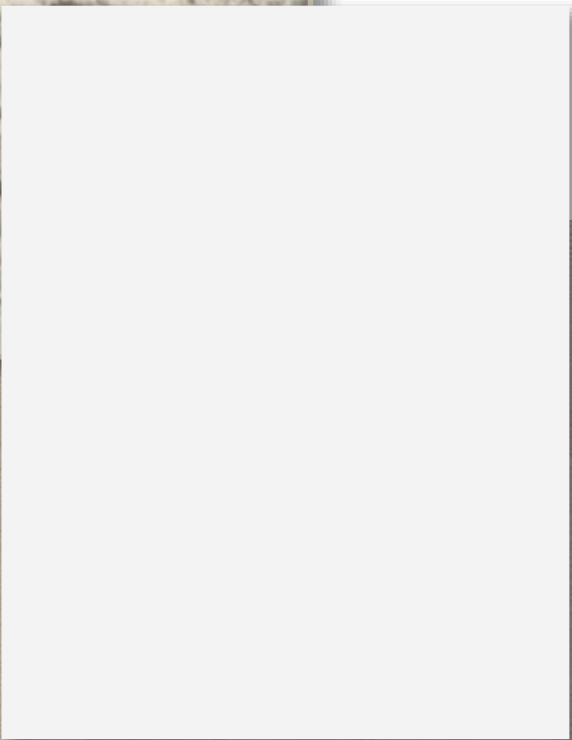
CARPET



BATHROOM
COUNTERTOP



BATHROOM
CABINETRY



LUXURY VINYL PLANK

