

TOWNHOME



119 CORTLAND TERRACE

ORCHARD PARK MEADOWS, ST. THOMAS

THE DETAILS

PRICE	\$ 555,000
CLOSING DATE	SEPTEMBER 24, 2024
LOT NUMBER	44B
BEDROOMS	3
BATHS	2.5
SQFT	1615
GARAGE	1
MODEL	2 STOREY TOWN

HAYHOE™
—HOMES—



SALES PROFESSIONAL

DAVE MATTHEWS

519.633.9215

dave.matthews@hayhoehomes.com

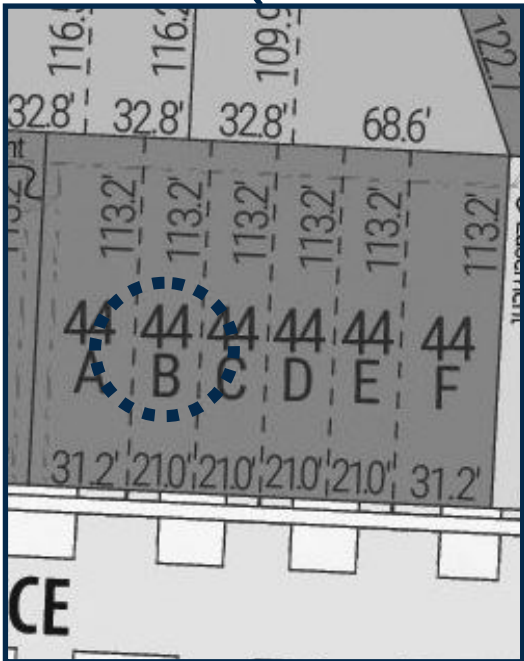
SITE PLAN



119 CORTLAND

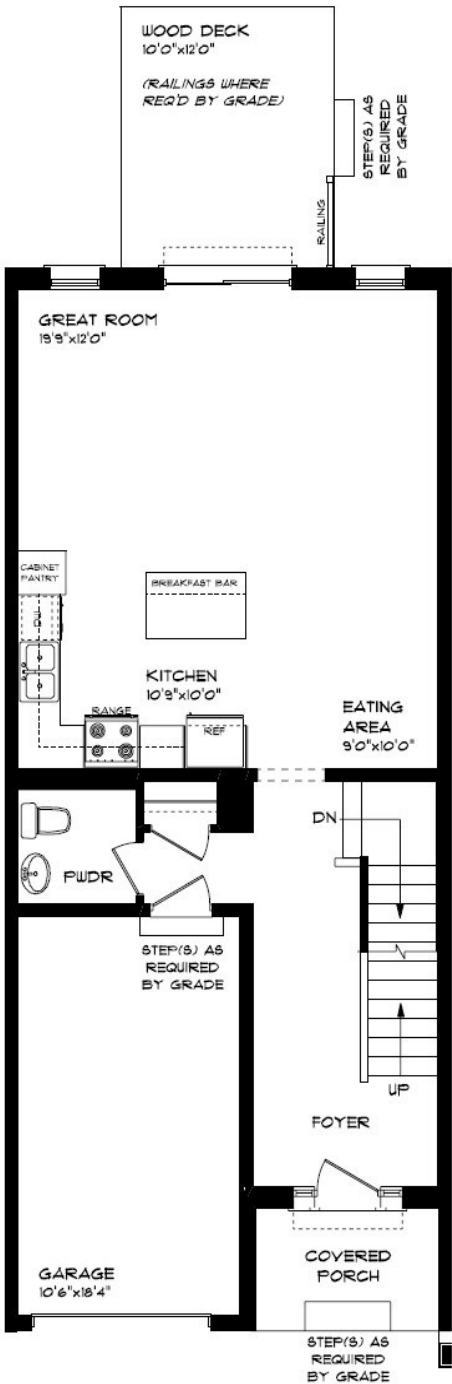
EXTERIOR FEATURES:

- KEYLESS ENTRY
- TREATED WOOD DECK
- ASPHALT DRIVEWAY
- WALKING TRAILS



MAIN FLOOR

119 CORTLAND TERR., ST. THOMAS



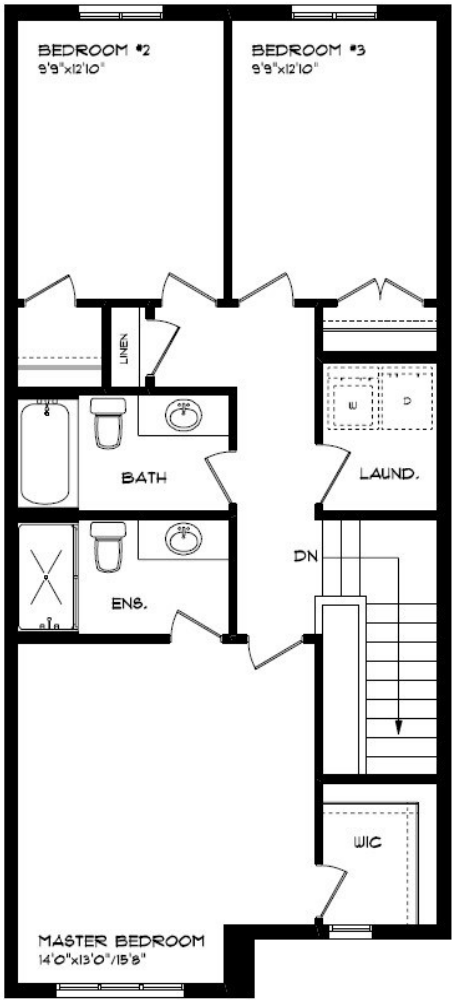
MAIN FLOOR:
APPROX 755 SQFT

- SINGLE CAR GARAGE
- KITCHEN ISLAND
- VINYL PLANK FLOORING
- QUARTZ COUNTERTOPS



SECOND FLOOR

119 CORTLAND TERR., ST. THOMAS



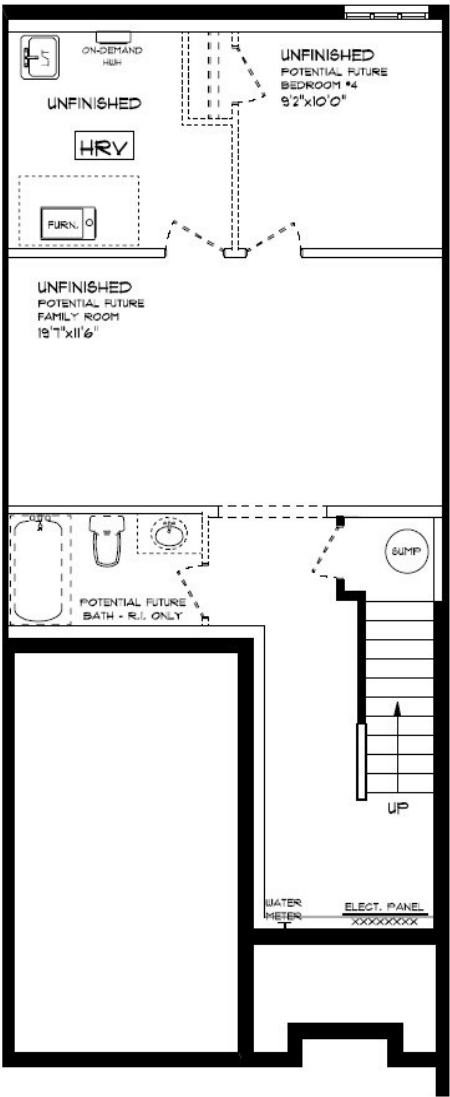
SECOND FLOOR LAUNDRY
PROFESSIONALLY DESIGNED
CARPET FLOORING
VINYL PLANK FLOORING
WALK-IN CLOSET

SECOND FLOOR:
APPROX 860 SQFT



BASEMENT

119 CORTLAND TERR., ST. THOMAS



BASEMENT:
UNFINISHED

AIR CONDITIONING
GAS FURNACE WITH HRV
HUMIDIFIER
NEW HOME WARRANTY

HAYHOETM
—HOMES—

INTERIOR FINISHES

119 CORTLAND



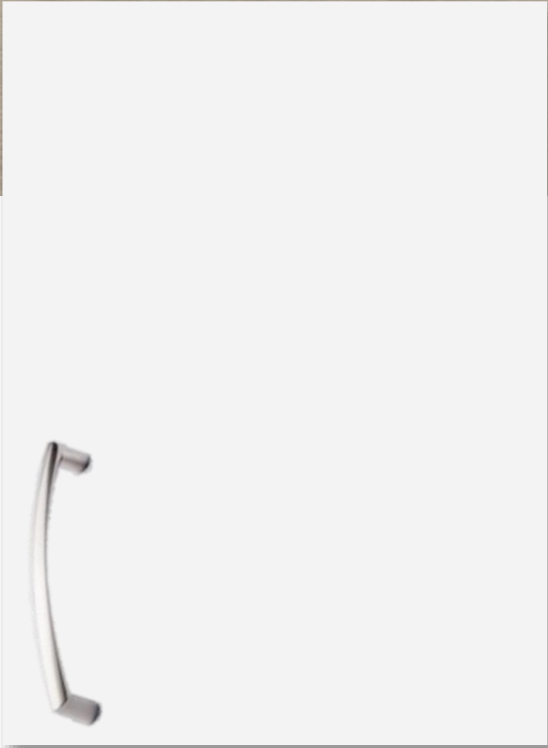
KITCHEN COUNTERTOPS



LUXURY VINYL PLANK



PAINT
COLOUR



KITCHEN
CABINETRY

ISLAND PENDANTS



FOYER
FIXTURE



PRICE, PRODUCTS, COLOURS & FEATURES ARE SUBJECT TO CHANGE WITHOUT NOTICE.
COLOURS SHOWN MAY VARY FROM INSTALLED MATERIALS. E & O.E

CREATED SEPT 1, 2022

INTERIOR FINISHES

119 CORTLAND

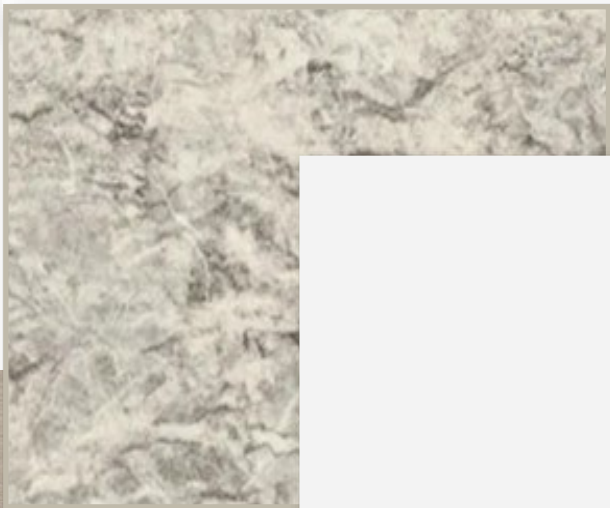
INTERIOR DOOR STYLE



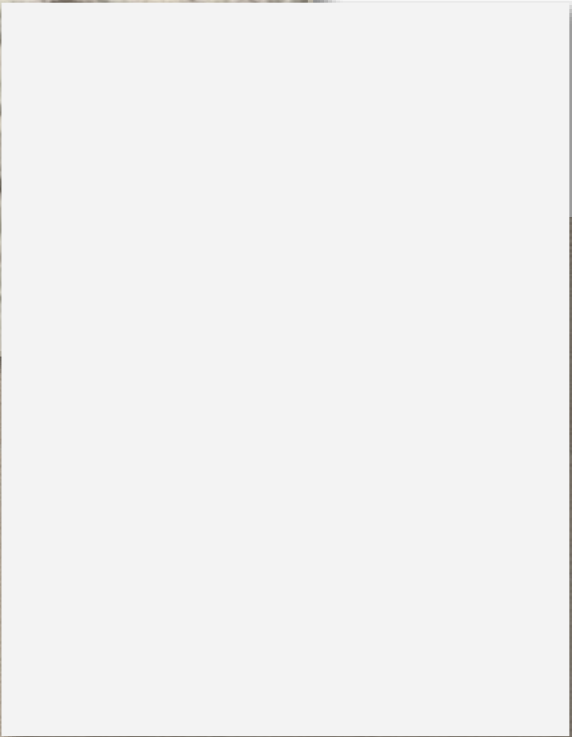
CARPET



BATHROOM
COUNTERTOP



BATHROOM
CABINETRY



LUXURY VINYL PLANK

