

T O W N H O M E



ESSENTIAL FEATURES

109 CORTLAND TERRACE

ORCHARD PARK MEADOWS, ST. THOMAS

THE DETAILS

PRICE	\$ 555,000
CLOSING DATE	NOVEMBER 6, 2024
LOT NUMBER	45C
BEDROOMS	3
BATHS	2.5
SQFT	1615
GARAGE	1
MODEL	2 STOREY TOWN

HAYHOE™
— HOMES —



SALES PROFESSIONAL

DAVE MATTHEWS

519.633.9215

dave.matthews@hayhoehomes.com

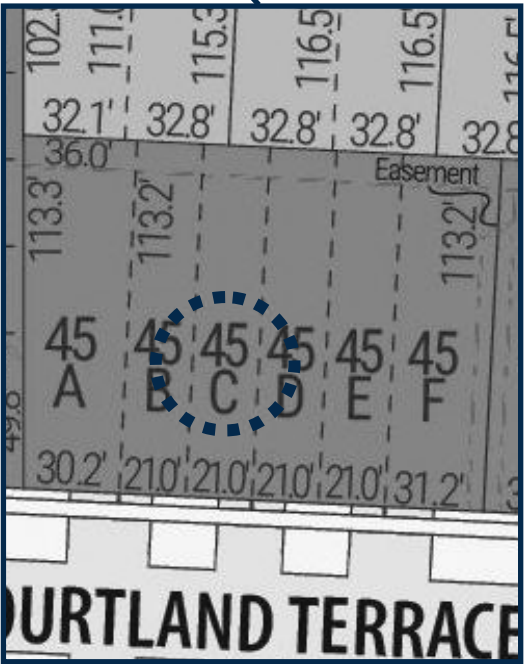
SITE PLAN



109 CORTLAND

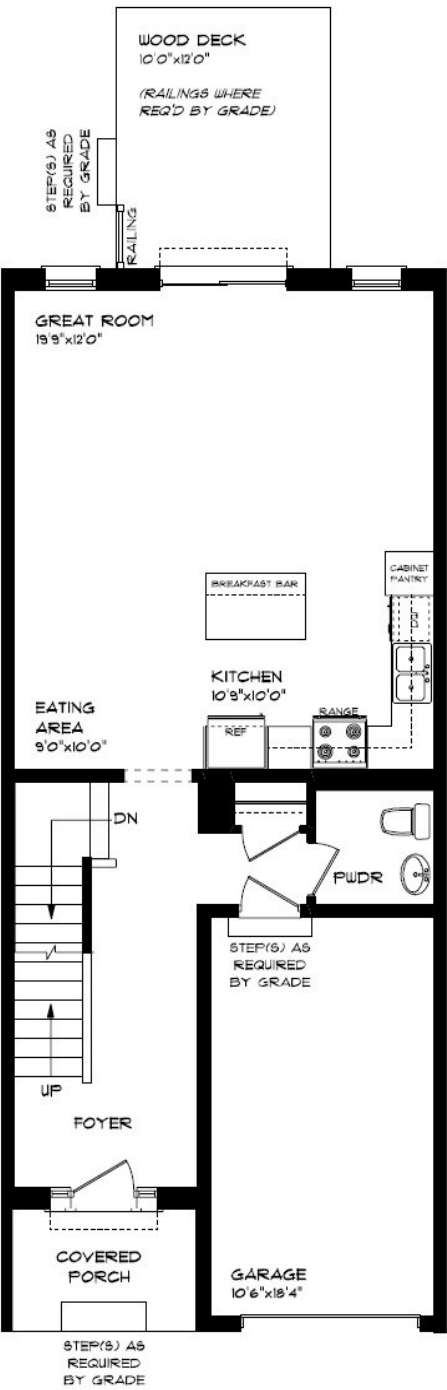
EXTERIOR FEATURES:

- KEYLESS ENTRY
- TREATED WOOD DECK
- ASPHALT DRIVEWAY
- WALKING TRAILS



MAIN FLOOR

109 CORTLAND TERR., ST. THOMAS



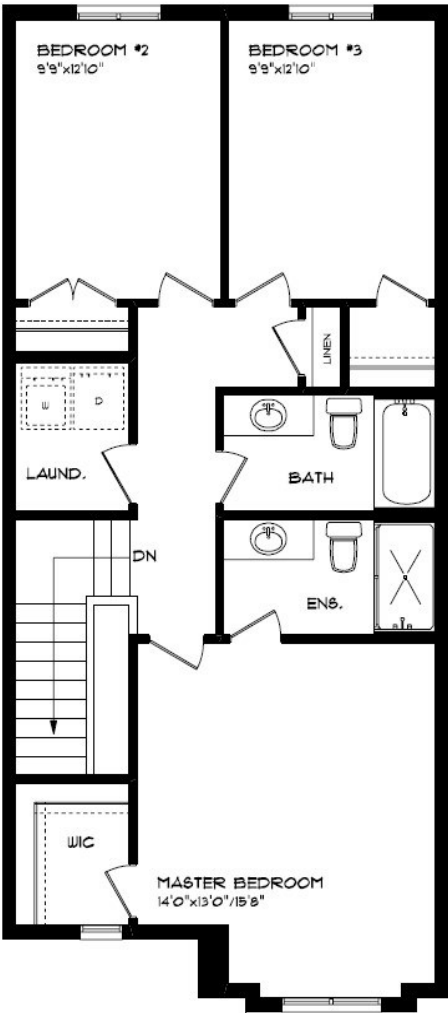
MAIN FLOOR:
APPROX 755 SQFT

- SINGLE CAR GARAGE
- KITCHEN ISLAND
- VINYL PLANK FLOORING
- QUARTZ COUNTERTOPS



SECOND FLOOR

109 CORTLAND TERR., ST. THOMAS



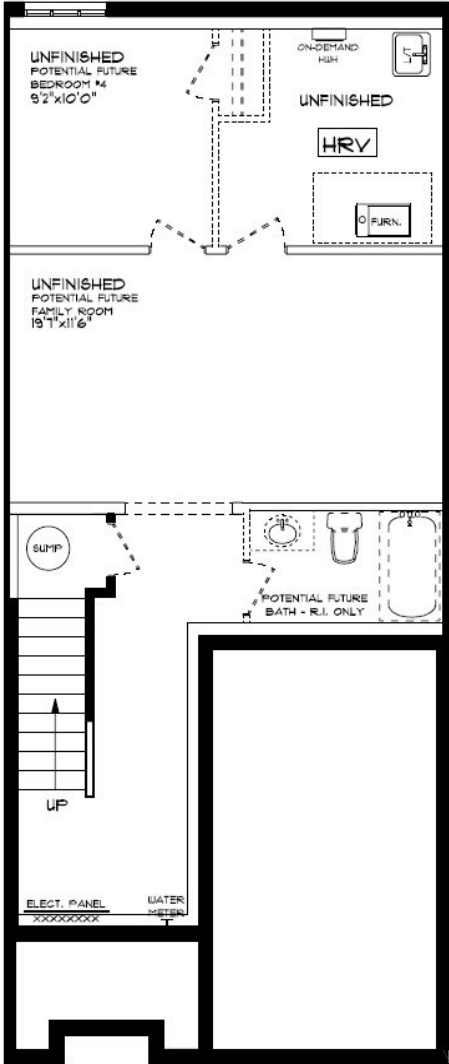
- SECOND FLOOR LAUNDRY
- PROFESSIONALLY DESIGNED
- CARPET FLOORING
- VINYL PLANK FLOORING
- WALK-IN CLOSET

SECOND FLOOR:
APPROX 860 SQFT



BASEMENT

109 CORTLAND TERR., ST. THOMAS



BASEMENT:
UNFINISHED

- AIR CONDITIONING
- GAS FURNACE WITH HRV
- HUMIDIFIER
- NEW HOME WARRANTY



INTERIOR FINISHES

109 CORTLAND



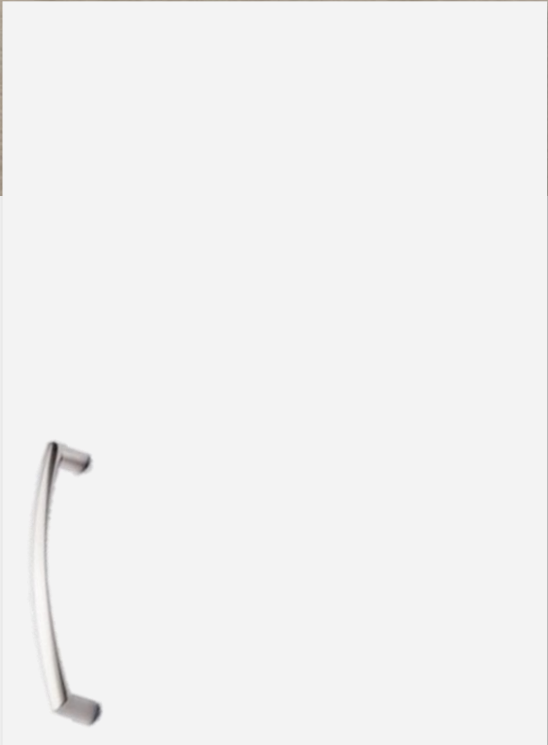
KITCHEN COUNTERTOPS



LUXURY VINYL PLANK



PAINT
COLOUR



KITCHEN
CABINETRY

ISLAND PENDANTS



FOYER
FIXTURE



PRICE, PRODUCTS, COLOURS & FEATURES ARE SUBJECT TO CHANGE WITHOUT NOTICE.
COLOURS SHOWN MAY VARY FROM INSTALLED MATERIALS. E & O.E

CREATED SEPT 1, 2022

INTERIOR FINISHES

109 CORTLAND

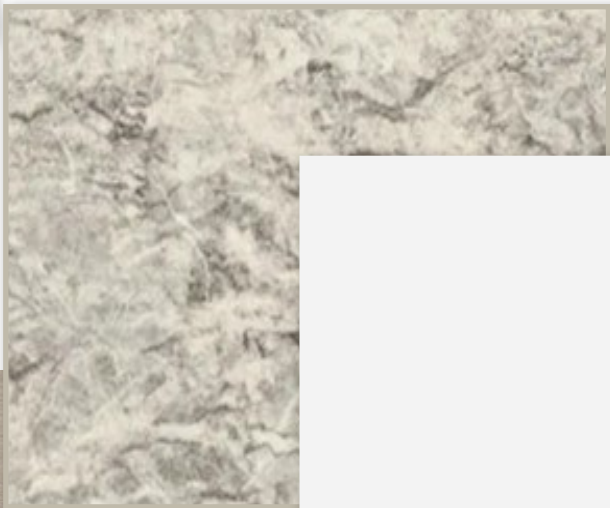
INTERIOR DOOR STYLE



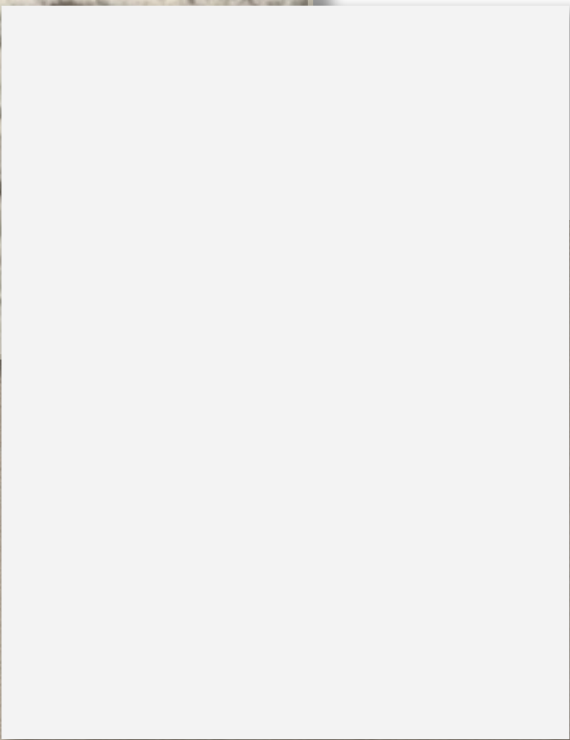
CARPET



BATHROOM
COUNTERTOP



BATHROOM
CABINETRY



LUXURY VINYL PLANK

