

# TOWNHOME



ESSENTIAL FEATURES

## 111 CORTLAND TERRACE

ORCHARD PARK MEADOWS, ST. THOMAS

### THE DETAILS

|              |                  |
|--------------|------------------|
| PRICE        | \$ 555,000       |
| CLOSING DATE | NOVEMBER 7, 2024 |
| LOT NUMBER   | 45D              |
| BEDROOMS     | 3                |
| BATHS        | 2.5              |
| SQFT         | 1599             |
| GARAGE       | 1                |
| MODEL        | 2 STOREY TOWN    |

**HAYHOE™**  
— HOMES —



### SALES PROFESSIONAL

DAVE MATTHEWS

519.633.9215

dave.matthews@hayhoehomes.com

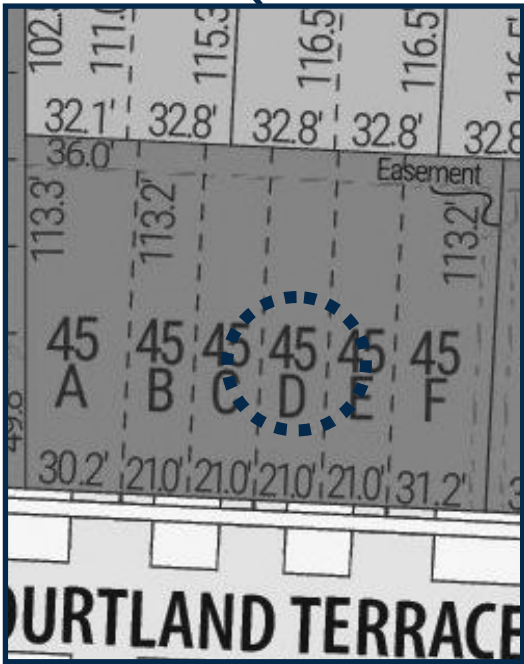
# SITE PLAN



## 111 CORTLAND

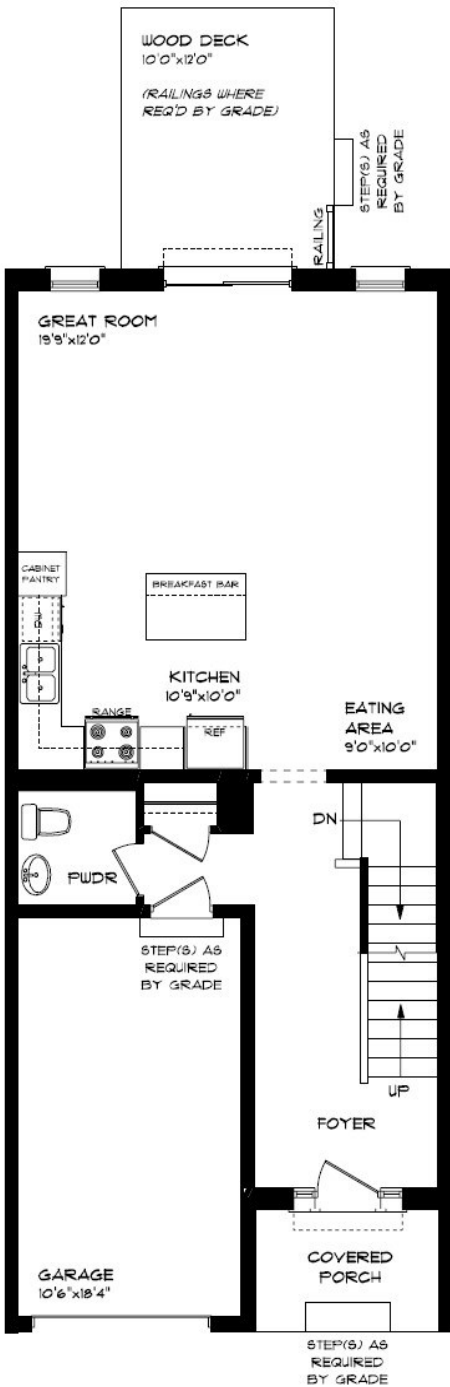
EXTERIOR FEATURES:

- KEYLESS ENTRY
- TREATED WOOD DECK
- ASPHALT DRIVEWAY
- WALKING TRAILS



# MAIN FLOOR

111 CORTLAND TERR., ST. THOMAS



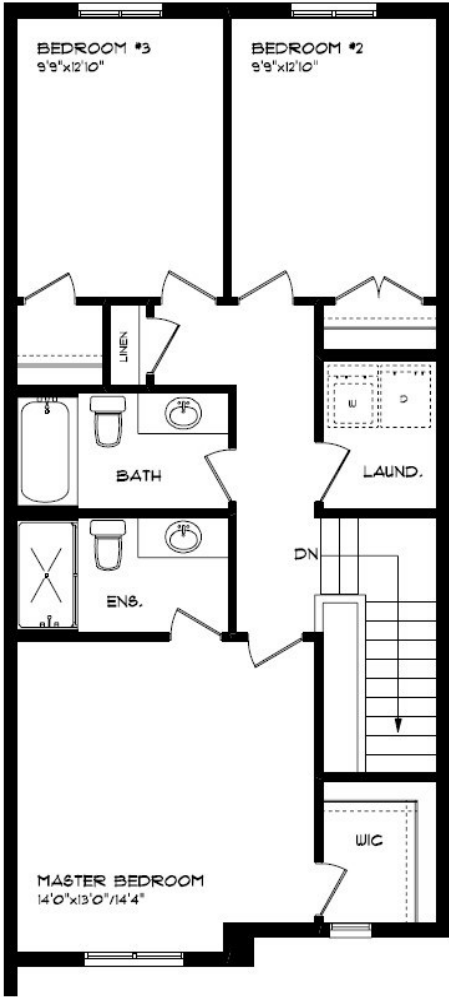
MAIN FLOOR:  
APPROX 755 SQFT

- SINGLE CAR GARAGE
- KITCHEN ISLAND
- VINYL PLANK FLOORING
- QUARTZ COUNTERTOPS



# SECOND FLOOR

111 CORTLAND TERR., ST. THOMAS



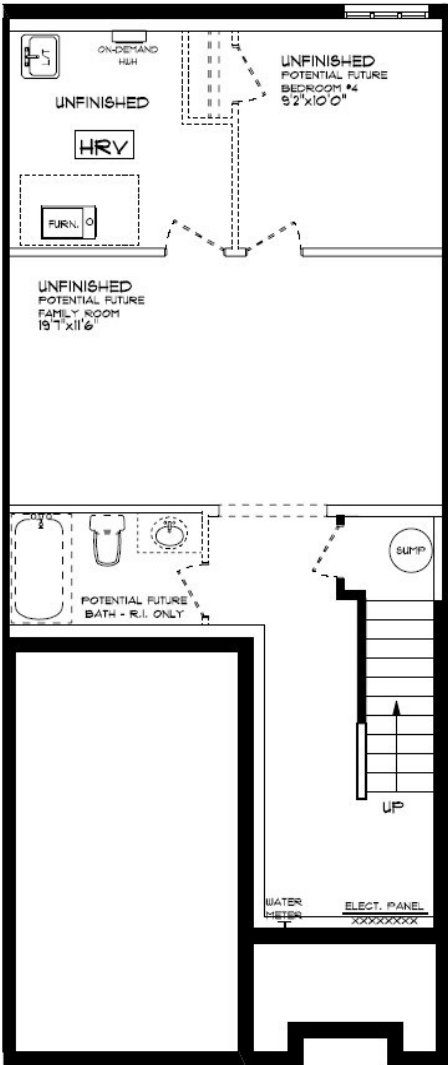
SECOND FLOOR LAUNDRY  
PROFESSIONALLY DESIGNED  
CARPET FLOORING  
VINYL PLANK FLOORING  
WALK-IN CLOSET

SECOND FLOOR:  
APPROX 844 SQFT



# BASEMENT

111 CORTLAND TERR., ST. THOMAS



BASEMENT:  
UNFINISHED

AIR CONDITIONING  
GAS FURNACE WITH HRV  
HUMIDIFIER  
NEW HOME WARRANTY

**HAYHOE**<sup>TM</sup>  
— HOMES —



# INTERIOR FINISHES

## 111 CORTLAND



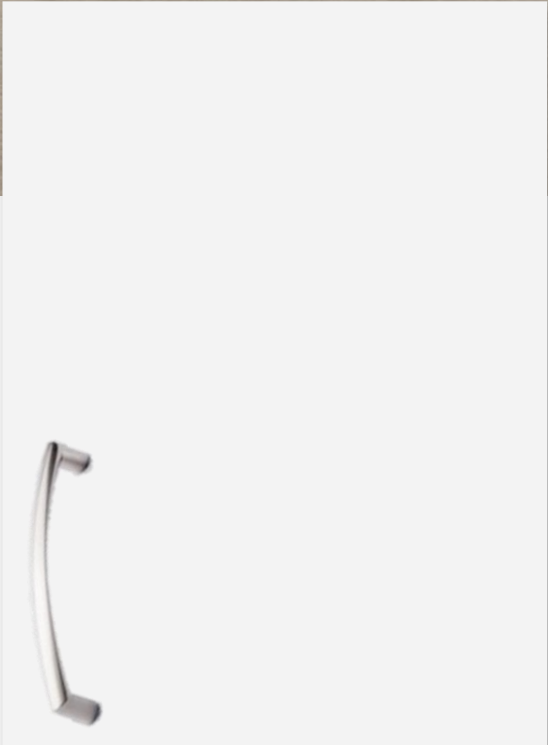
KITCHEN COUNTERTOPS



LUXURY VINYL PLANK



PAINT  
COLOUR



KITCHEN  
CABINETRY

ISLAND PENDANTS



FOYER  
FIXTURE



PRICE, PRODUCTS, COLOURS & FEATURES ARE SUBJECT TO CHANGE WITHOUT NOTICE.  
COLOURS SHOWN MAY VARY FROM INSTALLED MATERIALS. E & O.E

CREATED SEPT 1, 2022

# INTERIOR FINISHES

## 111 CORTLAND

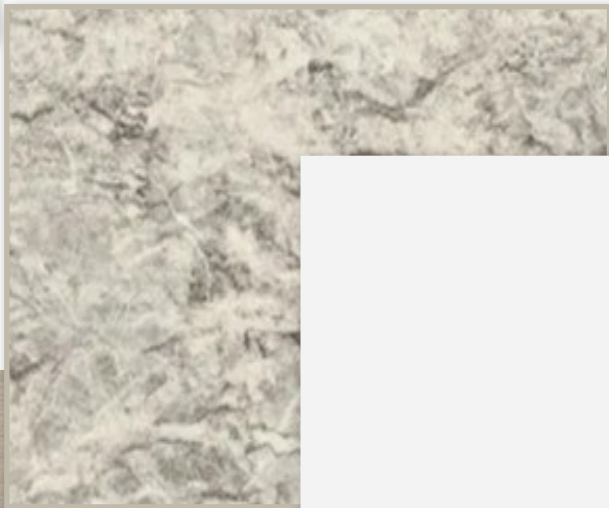
INTERIOR DOOR STYLE



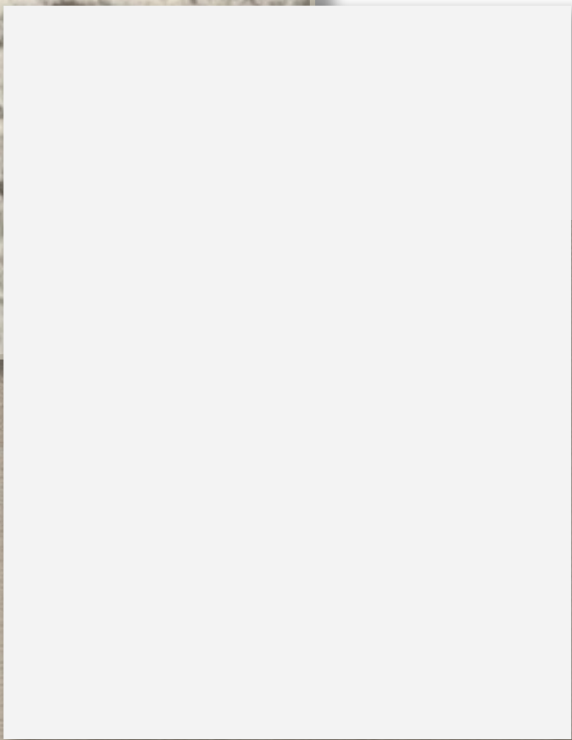
CARPET



BATHROOM  
COUNTERTOP



BATHROOM  
CABINETRY



LUXURY VINYL PLANK



PRICE, PRODUCTS, COLOURS & FEATURES ARE SUBJECT TO CHANGE WITHOUT NOTICE.  
COLOURS SHOWN MAY VARY FROM INSTALLED MATERIALS. E & O.E

CREATED SEPT 1, 2022