

INVENTORY HOME

BASEMENT SUITE



201 RENAISSANCE DRIVE

ORCHARD PARK MEADOWS, ST. THOMAS

THE DETAILS

PRICE	\$ 729,000
CLOSING DATE	AVAILABLE NOW
LOT NUMBER	91
BEDROOMS	4
BATHS	3
SQFT	2488
GARAGE	2
MODEL	GLENMORE

HAYHOE™
—HOMES—



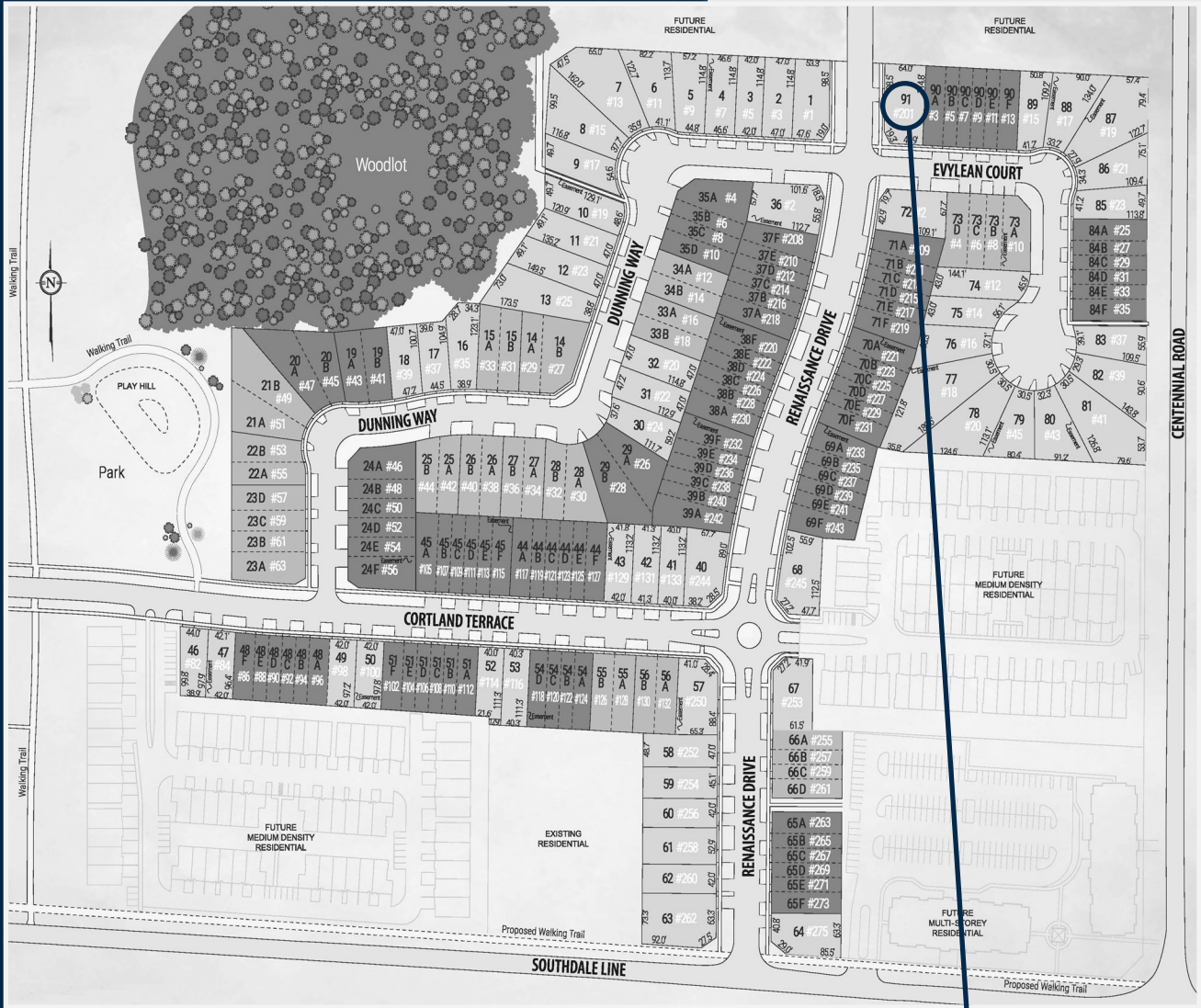
SALES PROFESSIONAL

DAVE MATTHEWS

519.633.9215

dave.matthews@hayhoehomes.com

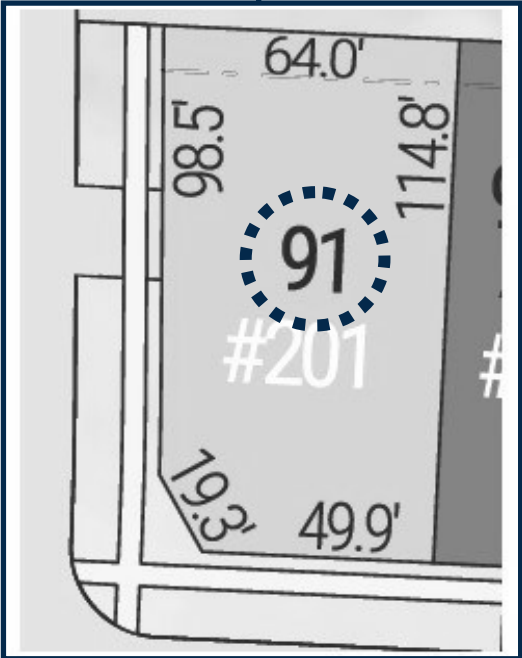
SITE PLAN



201 RENAISSANCE

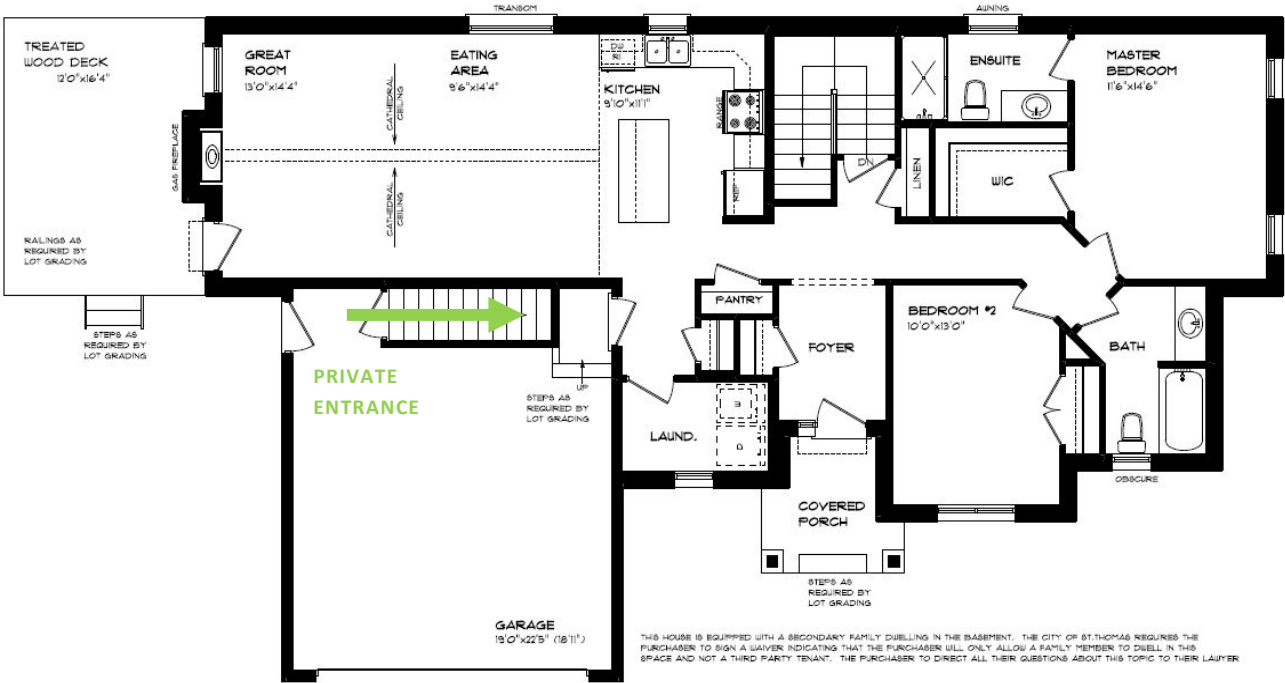
EXTERIOR FEATURES:

- KEYLESS ENTRY
- TREATED WOOD DECK
- BBQ GAS LINE
- ASPHALT DRIVEWAY
- WALKING TRAILS



MAIN FLOOR

201 RENAISSANCE,
ST. THOMAS



BASEMENT SUITE

LUXURY VINYL PLANK FLOORING

GAS FIREPLACE

CATHEDRAL CEILING

CUSTOM CABINETRY

MAIN FLOOR LAUNDRY

WALK-IN CLOSET

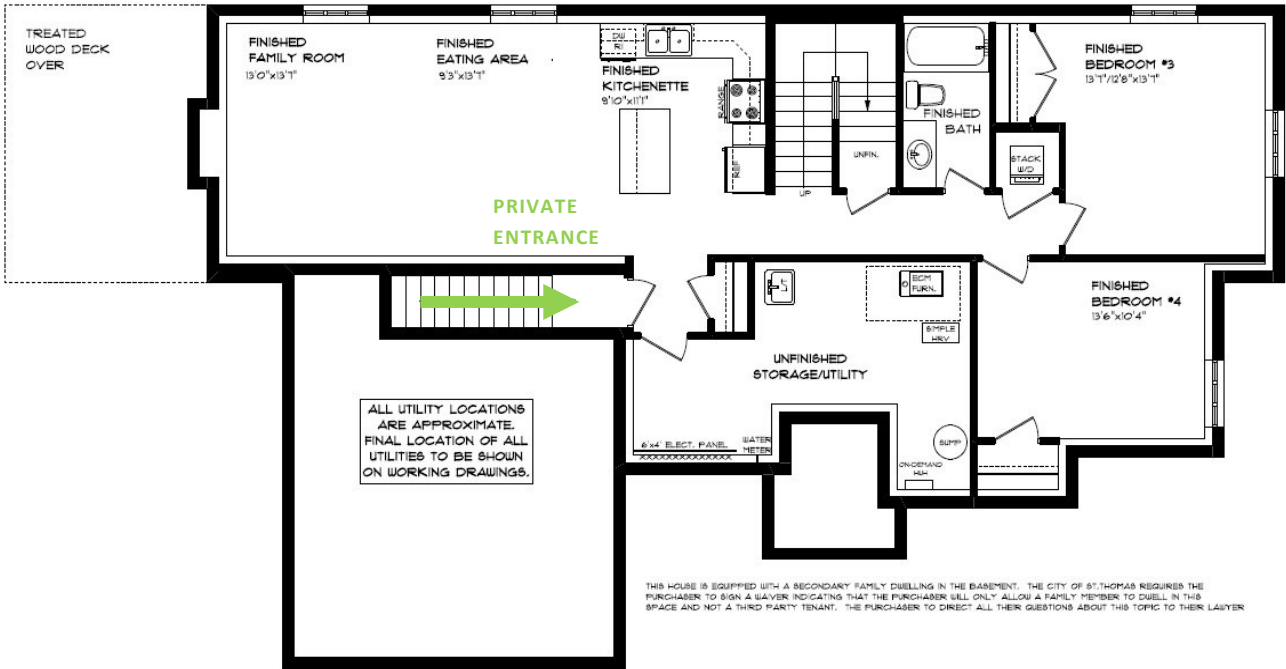
STAIRS FROM GARAGE DOWN

MAIN FLOOR:
APPROX 1444 SQFT

HAYHOETM
— HOMES —

BASEMENT

201 RENAISSANCE,
ST. THOMAS



BASEMENT SUITE

LUXURY VINYL PLANK FLOORING

KITCHENETTE

SECONDARY LAUNDRY

AIR CONDITIONING

GAS FURNACE WITH HRV

HUMIDIFIER

STAIRS FROM DARGAGE DOWN

NEW HOME WARRANTY

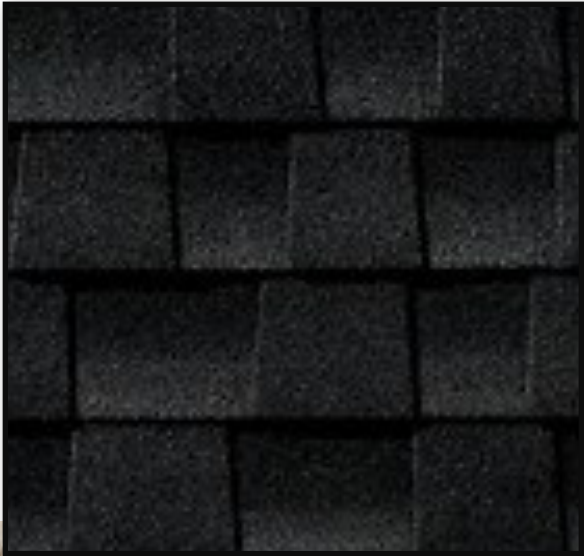
BASEMENT:

APPROX 1044 SQFT

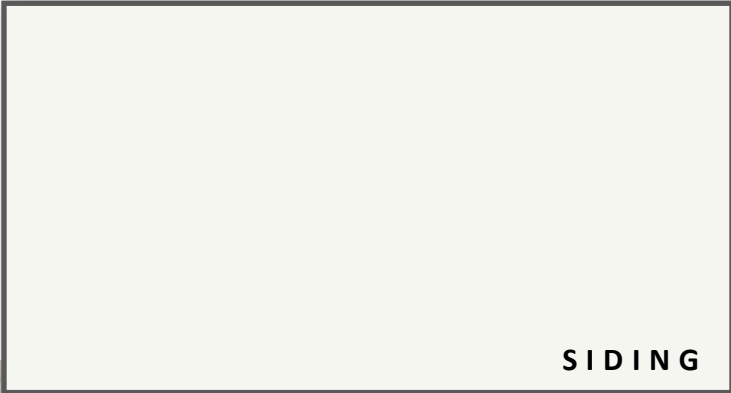
HAYHOETM
—HOMES—

EXTERIOR FINISHES

SHINGLES



201 RENAISSANCE



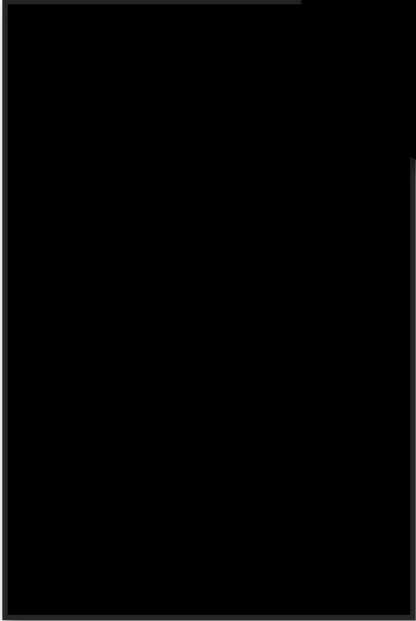
SIDING



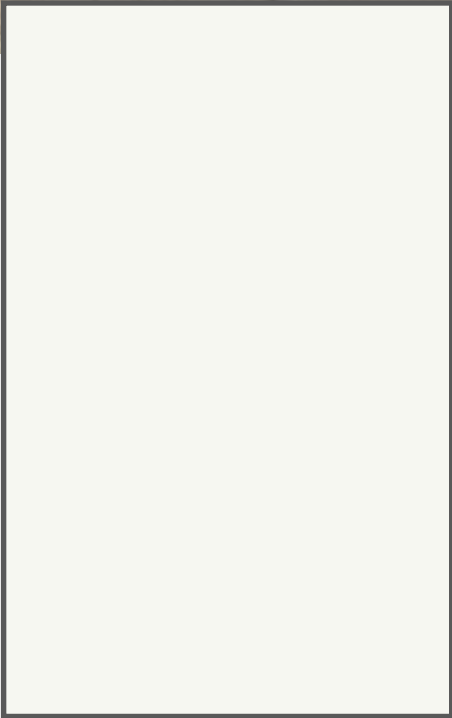
FRONT
DOOR

BRICK

GARAGE DOOR



WINDOWS



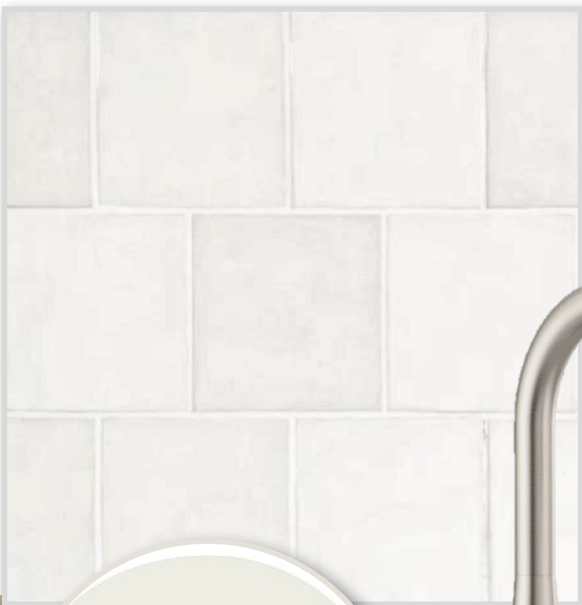
ALUMINUM



INTERIOR FINISHES

201 RENAISSANCE

KITCHEN BACKSPLASH



KITCHEN COUNTERTOPS



PAINT
COLOUR



KITCHEN ACCENTS
& MANTEL STAIN



ENSUITE &
MAIN BATH
VANITY



VINYL PLANK



ENSUITE &
MAIN BATH
COUNTERTOPS



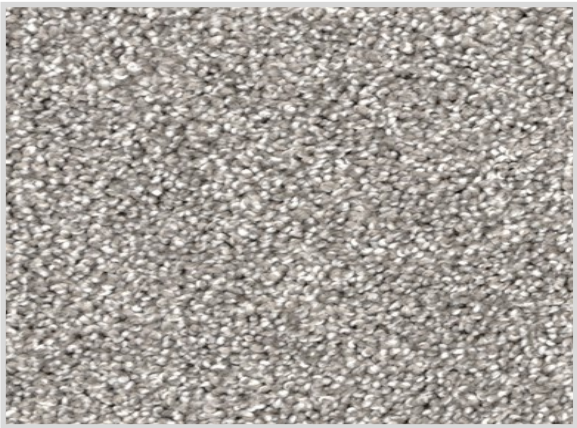
KITCHEN
CABINETRY

INTERIOR FINISHES

INTERIOR DOOR STYLE

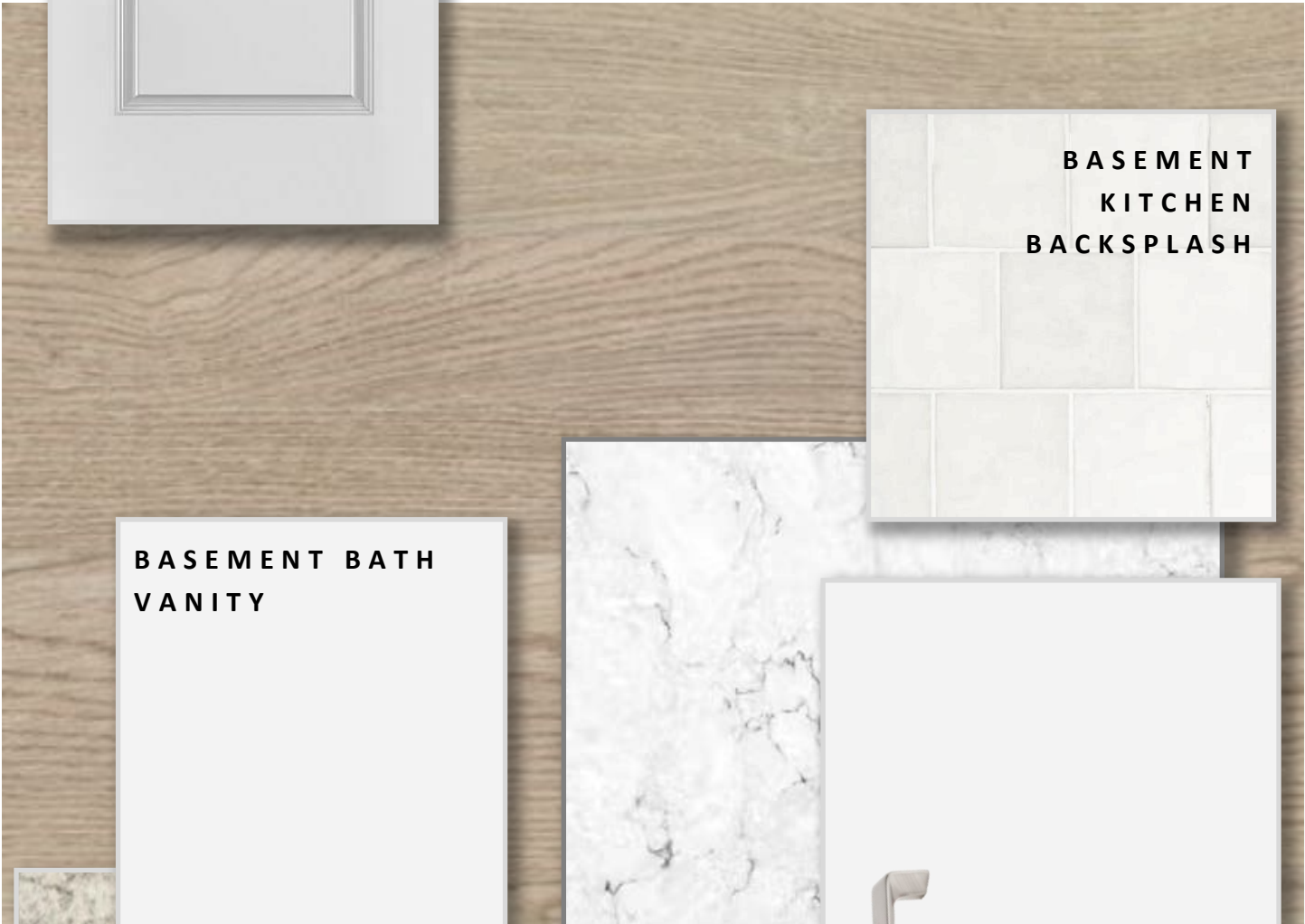


201 RENAISSANCE



CARPET STAIRS

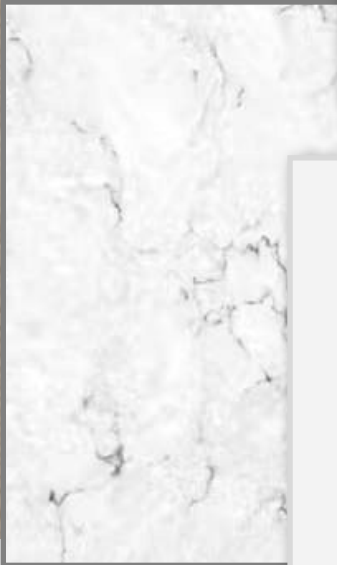
VINYL PLANK



BASEMENT BATH
VANITY



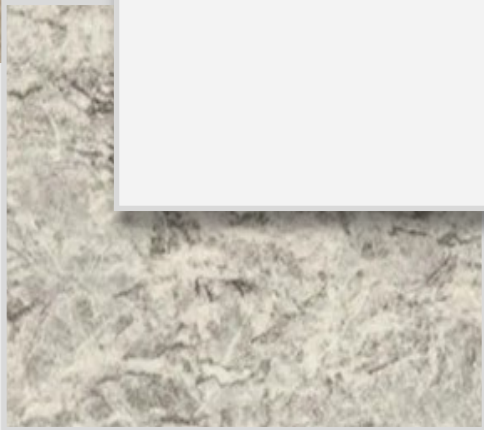
BASEMENT
KITCHEN
BACKSPLASH



BASEMENT
KITCHEN
COUNTERTOP



BASEMENT
KITCHEN
CABINETRY



BASEMENT BATH
COUNTERTOP



PRICE, PRODUCTS, COLOURS & FEATURES ARE SUBJECT TO CHANGE WITHOUT NOTICE.
COLOURS SHOWN MAY VARY FROM INSTALLED MATERIALS. E & O.E