

T O W N H O M E

ESSENTIAL FEATURES



38 CANARY STREET

NORTHCREST TOWNS, TILLSONBURG

THE DETAILS

PRICE	\$ 499,000
CLOSING DATE	DECEMBER 18, 2024
LOT NUMBER	98C, PHASE 2
BEDROOMS	3
BATHS	2.5
SQFT	1551
GARAGE	1
MODEL	2 STOREY TOWN

HAYHOE™
—HOMES—



SALES PROFESSIONAL

EMMA SMITH

519.409.1474

emma.smith@hayhoehomes.com

SITE PLAN

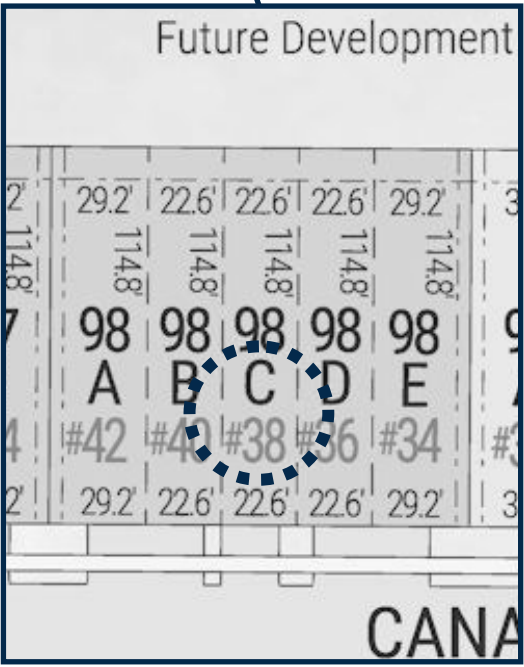


38 CANARY ST

EXTERIOR FEATURES:

- KEYLESS ENTRY
- TREATED WOOD DECK
- ASPHALT DRIVEWAY
- WALKING TRAILS

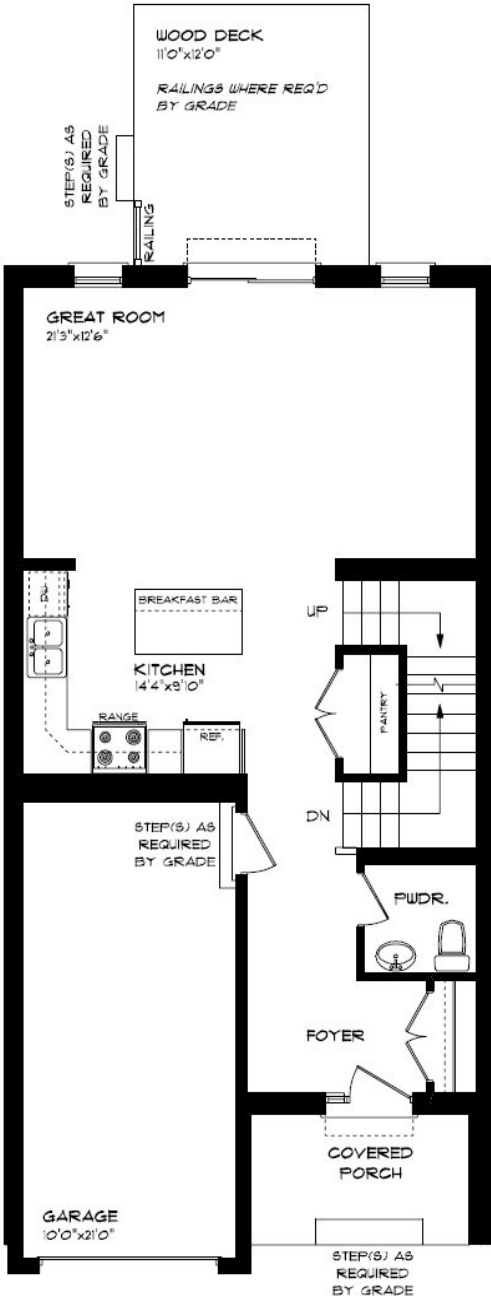
HAYHOE™
— HOMES —



NORTHCREST
TOWNS

MAIN FLOOR

38 CANARY ST, TILLSONBURG



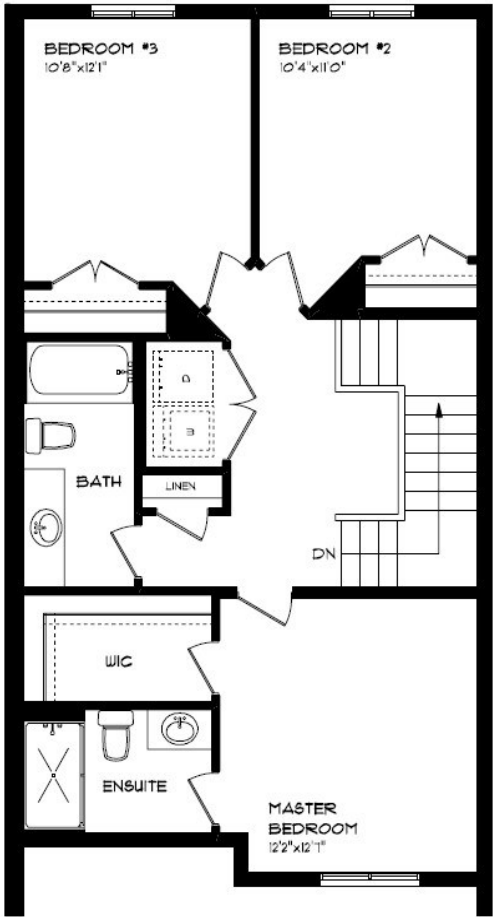
- SINGLE CAR GARAGE
- KITCHEN ISLAND
- VINYL PLANK FLOORING
- QUARTZ COUNTERTOPS
- UNDERMOUNT SINK

MAIN FLOOR:
APPROX 725 SQFT



SECOND FLOOR

38 CANARY ST, TILSONBURG



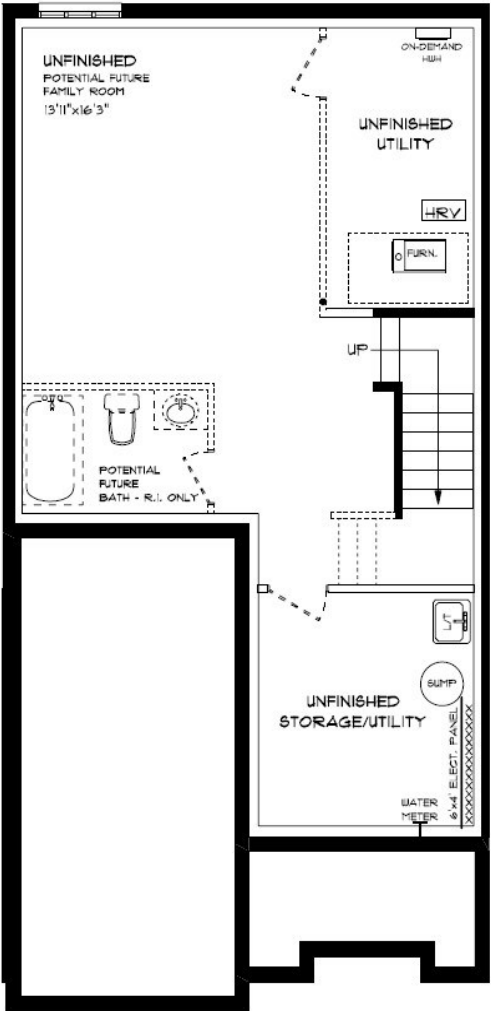
SECOND FLOOR:
APPROX 826 SQFT

SECOND FLOOR LAUNDRY
PROFESSIONALLY DESIGNED
CARPET FLOORING
VINYL PLANK FLOORING
WALK-IN CLOSET



BASEMENT

38 CANARY ST, TILSONBURG



BASEMENT:
UNFINISHED

AIR CONDITIONING
GAS FURNACE WITH HRV
HUMIDIFIER
NEW HOME WARRANTY

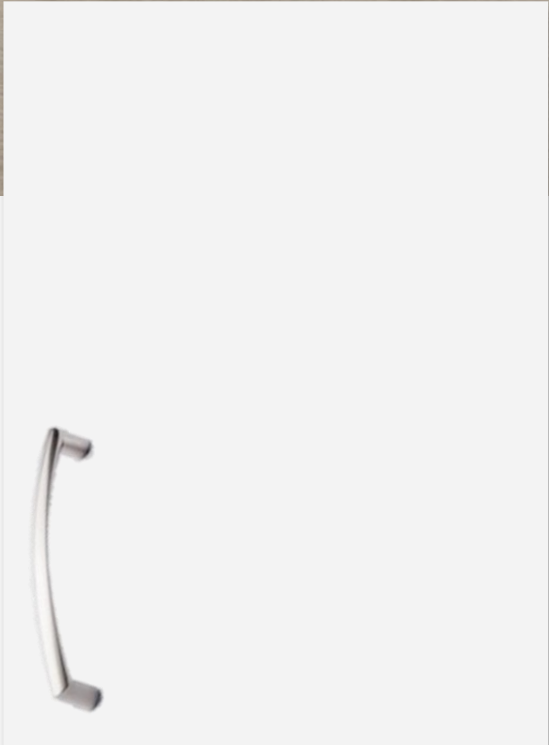
HAYHOE™
— HOMES —

INTERIOR FINISHES

38 CANARY ST



LUXURY VINYL PLANK



ISLAND PENDANTS



FOYER
FIXTURE



HAYHOE™
— HOMES —

KITCHEN
CABINETS

INTERIOR FINISHES

38 CANARY ST

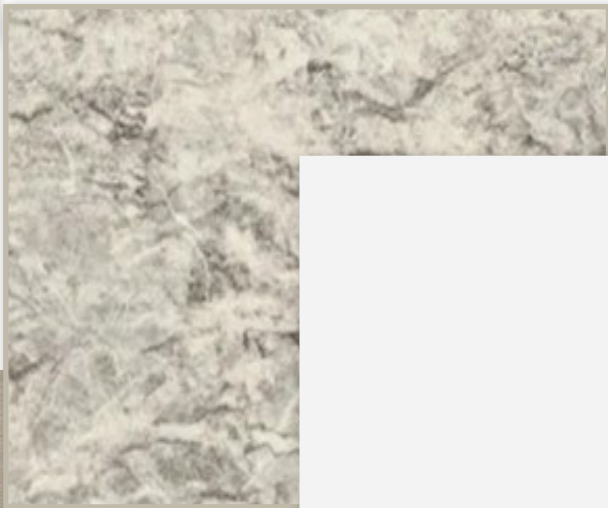
INTERIOR DOOR STYLE



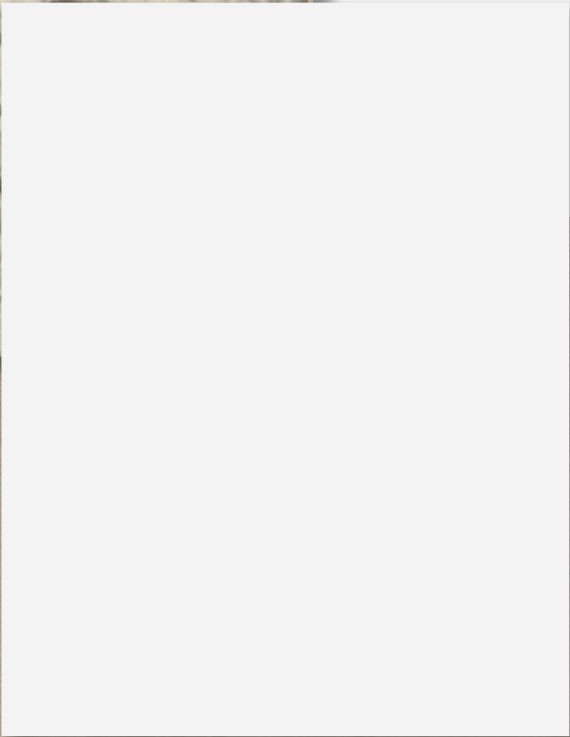
CARPET



BATHROOM
COUNTERTOP



BATHROOM
CABINETRY



LUXURY VINYL PLANK

