

TOWNHOME



ESSENTIAL FEATURES

107 CORTLAND TERRACE

ORCHARD PARK MEADOWS, ST. THOMAS

THE DETAILS

PRICE	\$ 555,000
CLOSING DATE	NOVEMBER 5, 2024
LOT NUMBER	45B
BEDROOMS	3
BATHS	2.5
SQFT	1615
GARAGE	1
MODEL	2 STOREY TOWN

HAYHOE™
— HOMES —



SALES PROFESSIONAL

DAVE MATTHEWS

519.633.9215

dave.matthews@hayhoehomes.com

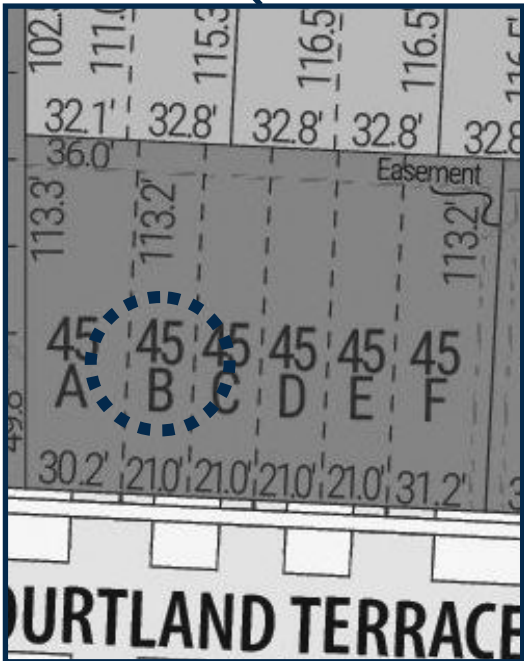
SITE PLAN



107 CORTLAND

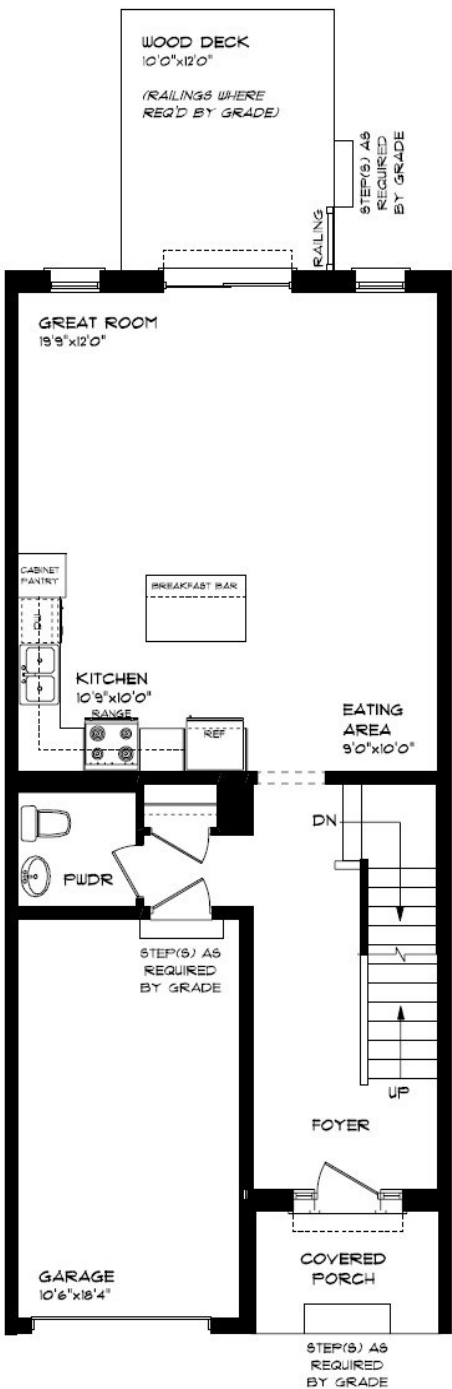
EXTERIOR FEATURES:

- KEYLESS ENTRY
- TREATED WOOD DECK
- ASPHALT DRIVEWAY
- WALKING TRAILS



MAIN FLOOR

107 CORTLAND TERR., ST. THOMAS



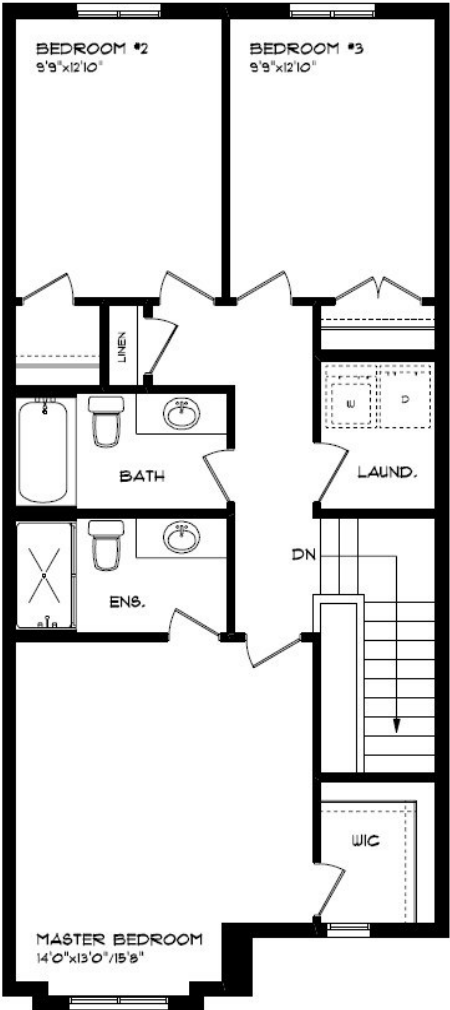
MAIN FLOOR:
APPROX 755 SQFT

- SINGLE CAR GARAGE
- KITCHEN ISLAND
- VINYL PLANK FLOORING
- QUARTZ COUNTERTOPS



SECOND FLOOR

107 CORTLAND TERR., ST. THOMAS



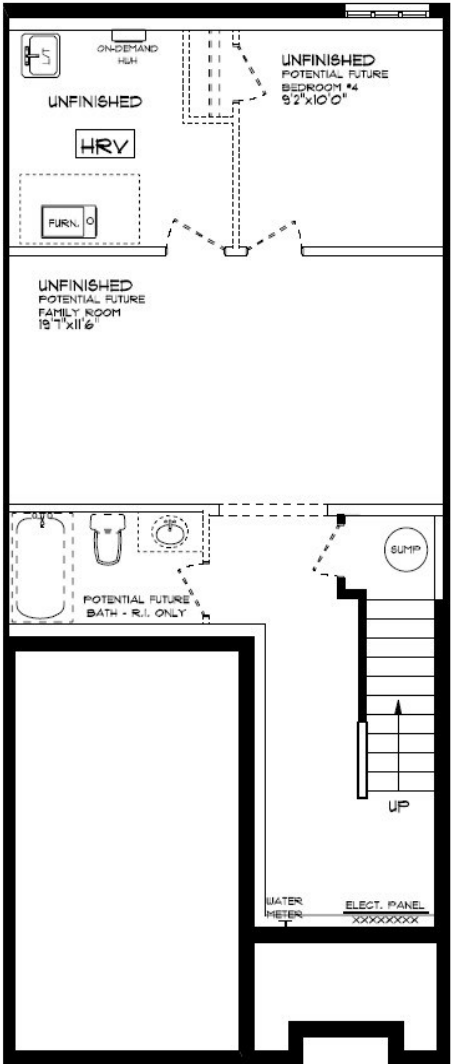
SECOND FLOOR LAUNDRY
PROFESSIONALLY DESIGNED
CARPET FLOORING
VINYL PLANK FLOORING
WALK-IN CLOSET

SECOND FLOOR:
APPROX 860 SQFT



BASEMENT

107 CORTLAND TERR., ST. THOMAS



BASEMENT:
UNFINISHED

AIR CONDITIONING
GAS FURNACE WITH HRV
HUMIDIFIER
NEW HOME WARRANTY

HAYHOE™
— HOMES —

INTERIOR FINISHES

107 CORTLAND



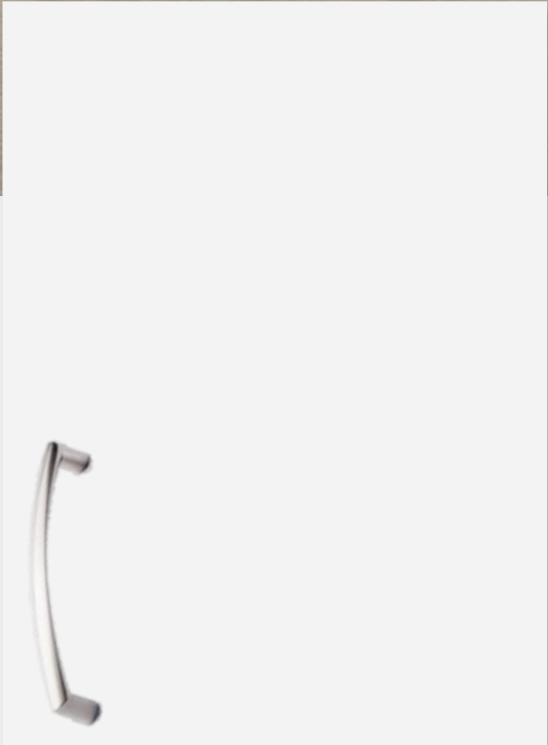
KITCHEN COUNTERTOPS



LUXURY VINYL PLANK



PAINT
COLOUR



KITCHEN
CABINETRY



ISLAND PENDANTS



FOYER
FIXTURE



PRICE, PRODUCTS, COLOURS & FEATURES ARE SUBJECT TO CHANGE WITHOUT NOTICE.
COLOURS SHOWN MAY VARY FROM INSTALLED MATERIALS. E & O.E

INTERIOR FINISHES

107 CORTLAND

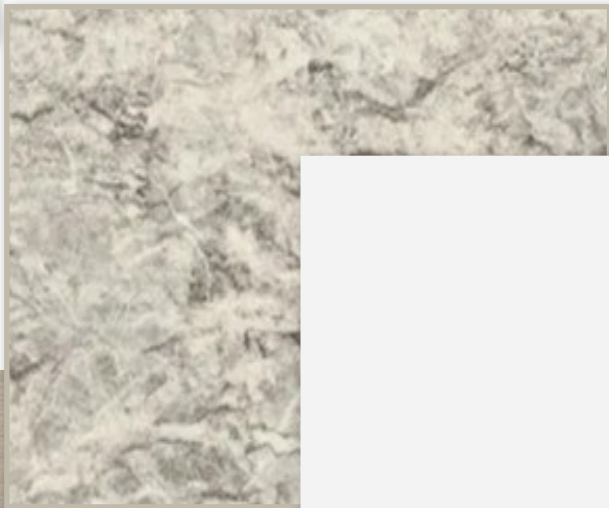
INTERIOR DOOR STYLE



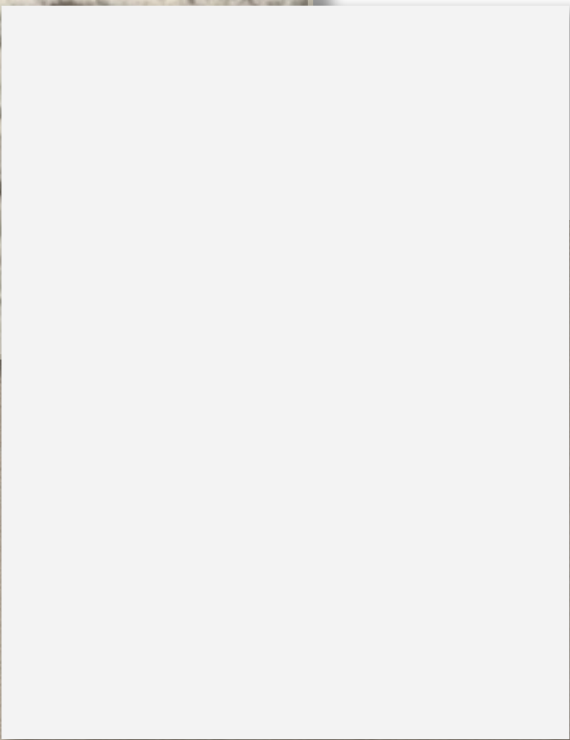
CARPET



BATHROOM
COUNTERTOP



BATHROOM
CABINETRY



LUXURY VINYL PLANK

