



# H A M I T O N

QUICK POSSESSION HOME

ANDREWS CROSSING PHASE 3

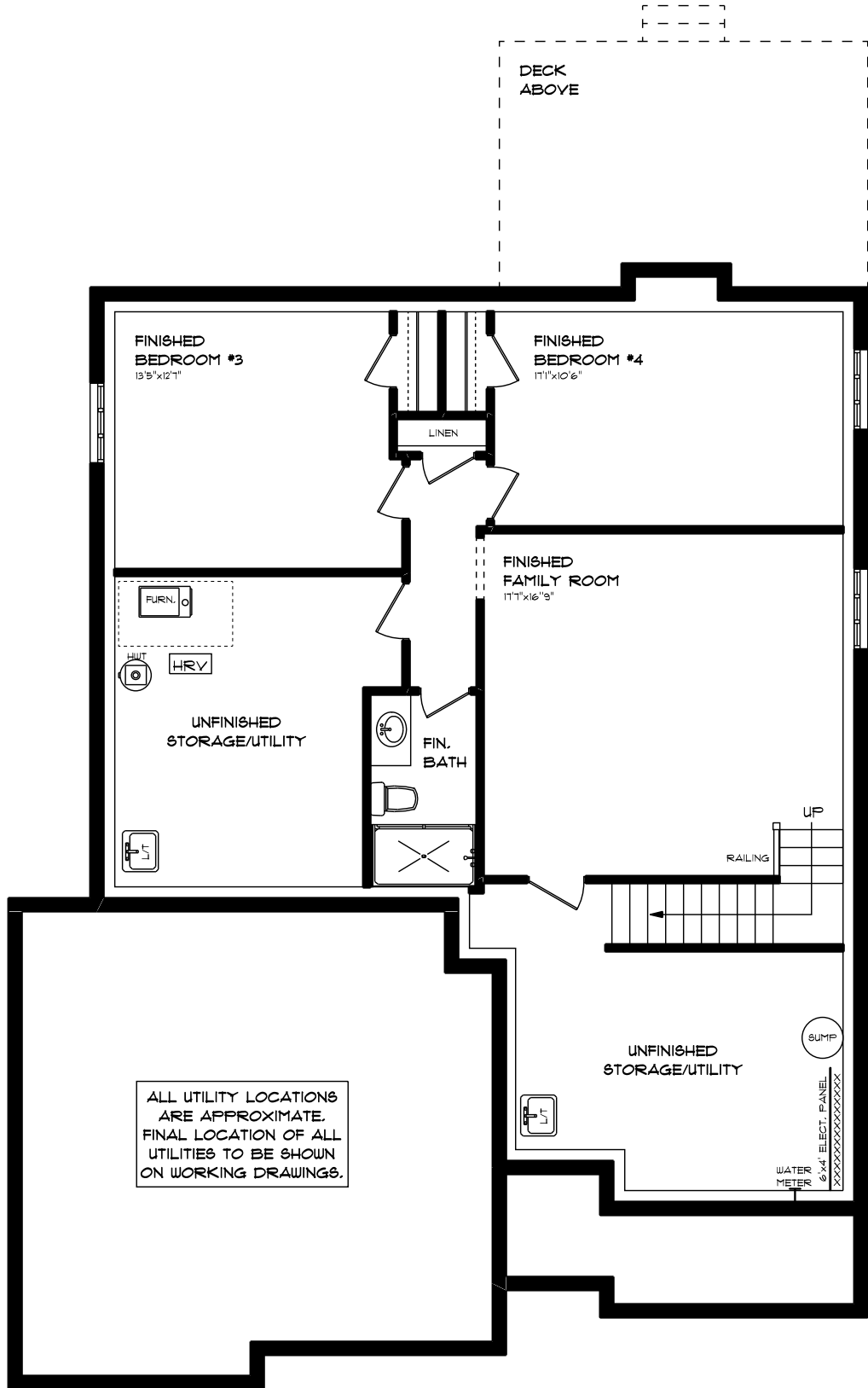
LOT 2 / HOUSE 18 VICTORIA WAY

FRONT ELEVATION - APPROX. 2,178 SQ. FT. TOTAL

This plan is the property of Hayhoe Homes and any reproduction of this plan, its concepts or ideas, is strictly prohibited. Plans and specifications are approximate and are subject to change without notice. Finished area and room dimensions will change depending on front elevation selection. E.&O.E.

**HAYHOE™**  
**·HOMES·**

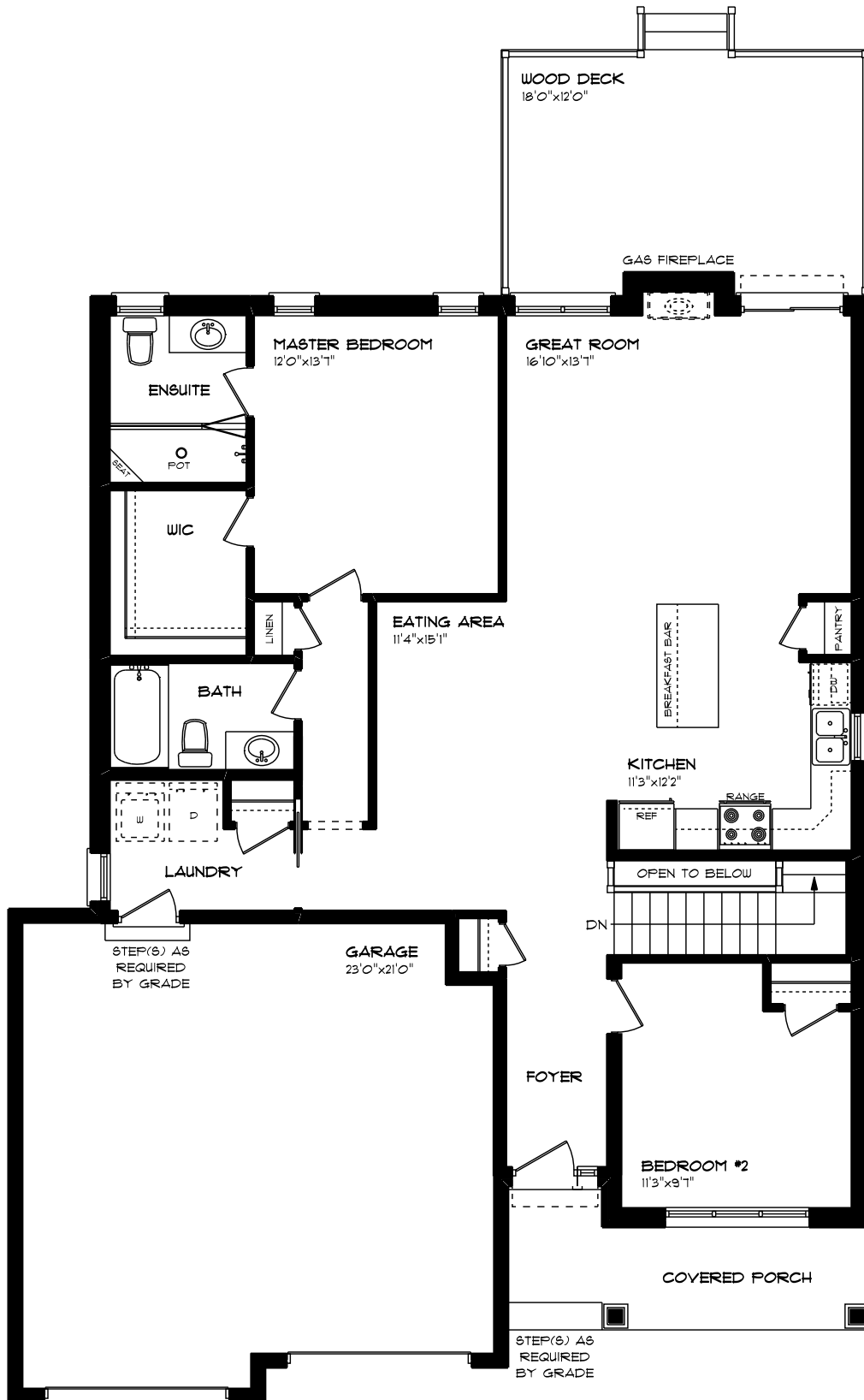
CREATED JUNE 2020  
E.&O.E.



**HAMILTON**  
 QUICK POSSESSION HOME  
 ANDREWS CROSSING PHASE 3  
 LOT 2 / HOUSE 18 VICTORIA WAY  
 LOWER LEVEL - APPROX. 840 SQ. FT.

**HAYHOE™**  
**HOMES™**  
 CREATED JUNE 2020  
 E40.E.

This plan is the property of Hayhoe Homes and any reproduction of this plan, its concepts or ideas, is strictly prohibited. Plans and specifications are approximate and are subject to change without notice. Finished area and room dimensions will change depending on front elevation selection. E40.E. Copyright 2020



**HAMILTON**  
**QUICK POSSESSION HOME**  
**ANDREWS CROSSING PHASE 3**  
**LOT 2 / HOUSE 18 VICTORIA WAY**  
**MAIN FLOOR PLAN - APPROX. 1,428 SQ. FT.**

**HAYHOE**<sup>TM</sup>  
**HOMES**  
CREATED JUNE 2020  
E40.E

This plan is the property of Hayhoe Homes and any reproduction of this plan, its concepts or ideas, is strictly prohibited. Plans and specifications are approximate and are subject to change without notice. Finished area and room dimensions will change depending on front elevation selection. E.40.E 2020