



KENTFIELD

QUICK POSSESSION HOME

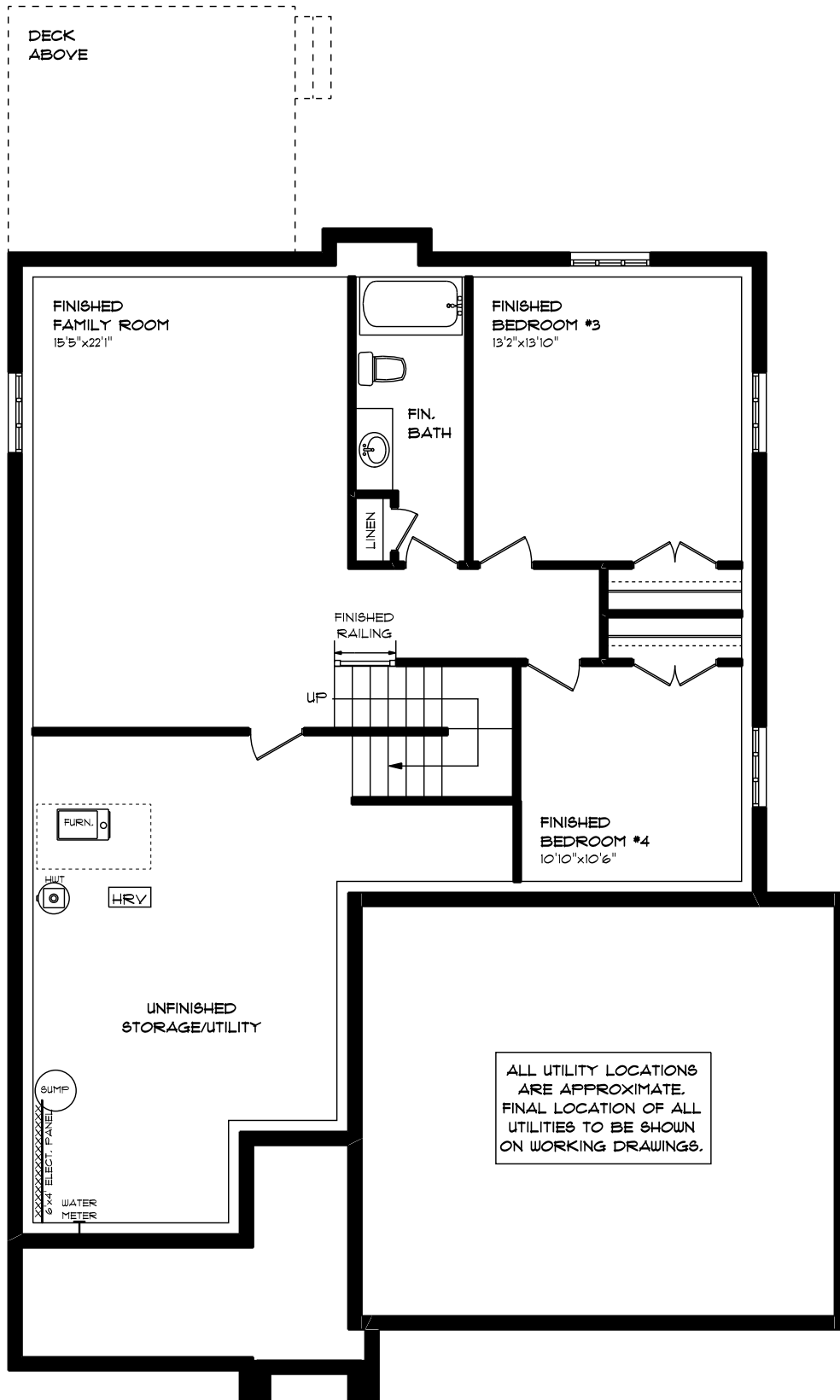
ANDREWS CROSSING PHASE 3

LOT 6 / HOUSE 26 VICTORIA WAY

FRONT ELEVATION - APPROX. 2,321 TOTAL SQ. FT.

This plan is the property of Hayhoe Homes and any reproduction of this plan, its concepts or ideas, is strictly prohibited. Plans and specifications are approximate and are subject to change without notice. Finished area and room dimensions will change depending on front elevation selection. E40.E.

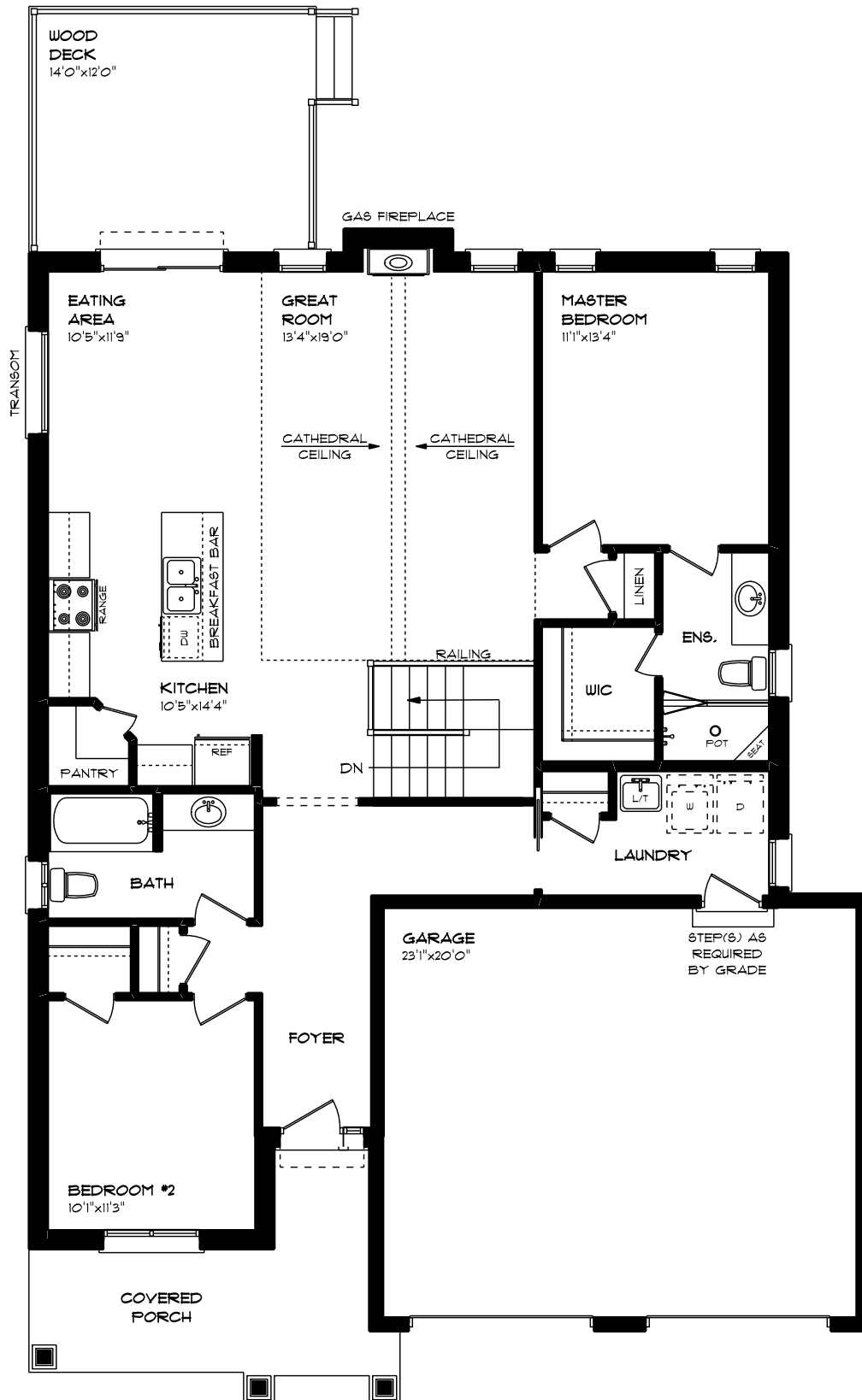
HAYHOE™
HOMES
CREATED JUNE 3, 2020
E40E



KENTFIELD
QUICK POSSESSION HOME
ANDREWS CROSSING PHASE 3
LOT 6 / HOUSE 26 VICTORIA WAY
LOWER LEVEL - APPROX. 878 SQ. FT.

This plan is the property of Hayhoe Homes and any reproduction of this plan, its concepts or ideas, is strictly prohibited. Plans and specifications are approximate and are subject to change without notice. Finished area and room dimensions will change depending on front elevation selection. E.O.E.

HAYHOE™
HOMES
CREATED JUNE 3, 2020
E.O.E.



KENTFIELD
 QUICK POSSESSION HOME
 ANDREWS CROSSING PHASE 3
 LOT 6 / HOUSE 26 VICTORIA WAY
 MAIN FLOOR - APPROX. 1,443 SQ. FT.

HAYHOE™
HOMES™
 CREATED JUNE 3, 2020
 EAOE

This plan is the property of Hayhoe Homes and any reproduction of this plan, its concepts or ideas, is strictly prohibited. Plans and specifications are approximate and are subject to change without notice. Finished area and room dimensions will change depending on front elevation selection. EAOE.