



H A M I T O N

QUICK POSSESSION HOME

ANDREWS CROSSING PHASE 3

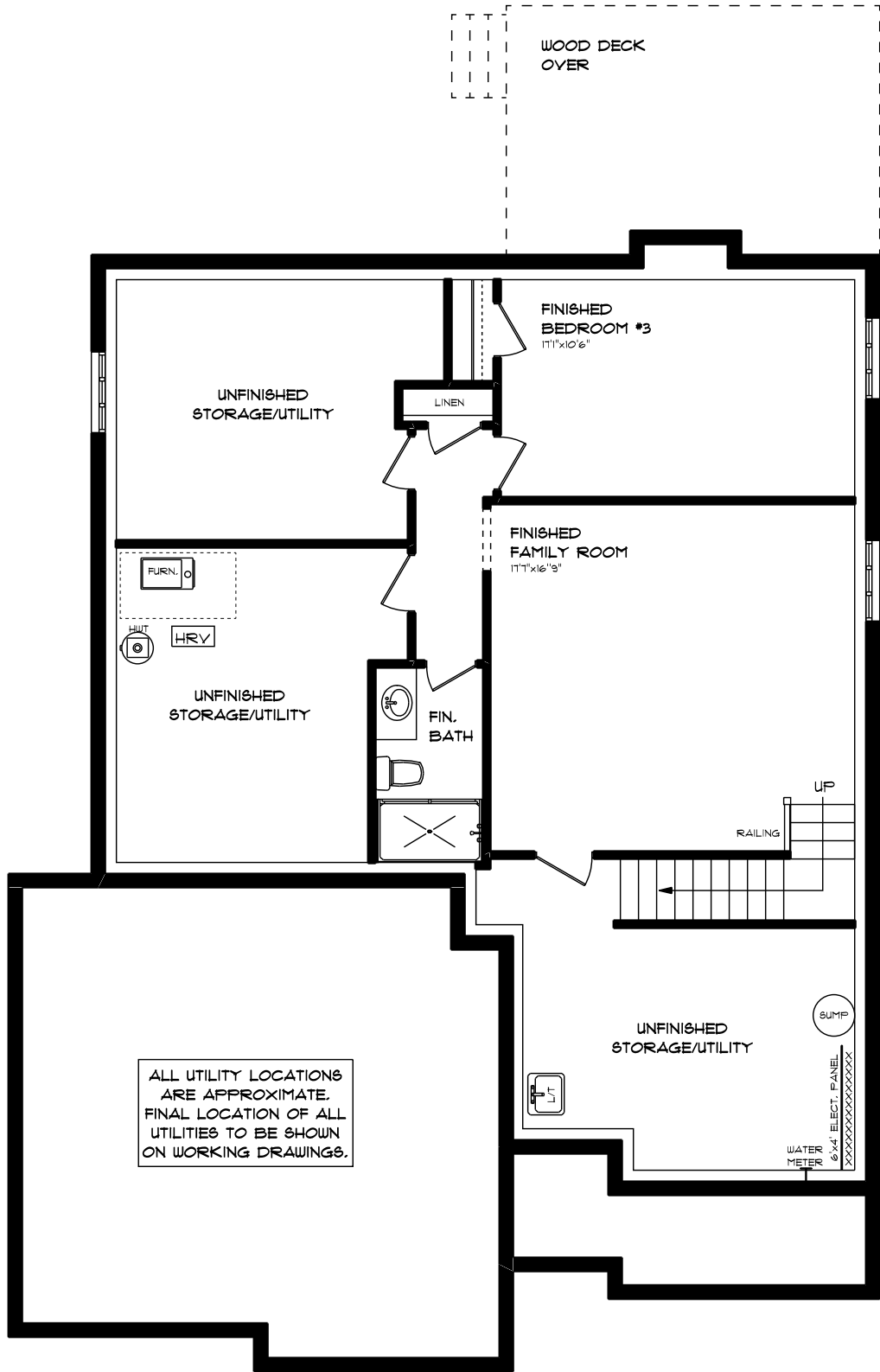
LOT 7 / HOUSE 28 VICTORIA WAY

FRONT ELEVATION - APPROX. 2,178 SQ. FT. TOTAL

This plan is the property of Hayhoe Homes and any reproduction of this plan, its concepts or ideas, is strictly prohibited. Plans and specifications are approximate and are subject to change without notice. Finished area and room dimensions will change depending on front elevation selection. E.&O.E.

HAYHOE™
—HOMES—

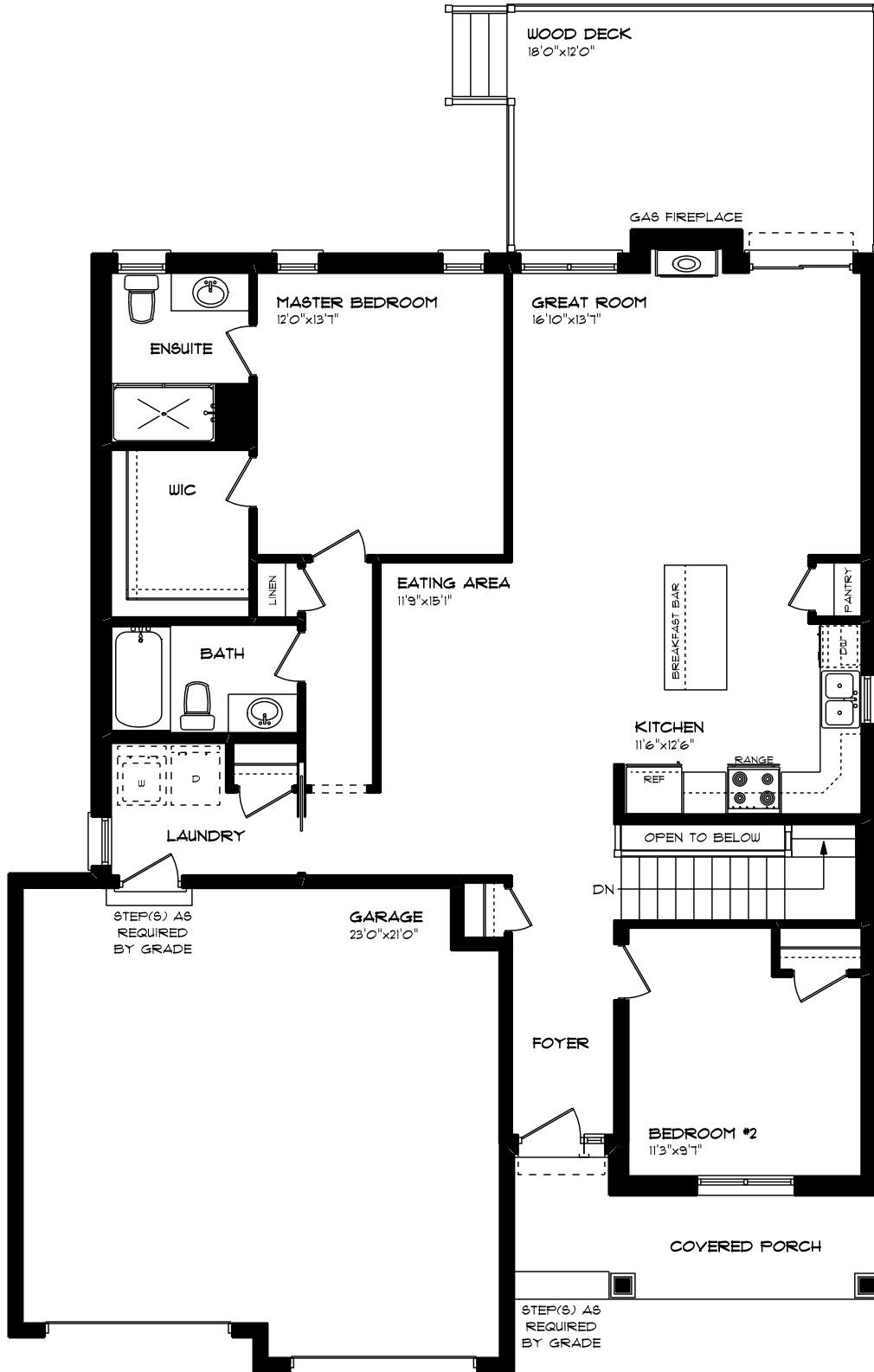
CREATED JULY 2020
E.&O.E.



HAMILTON
QUICK POSSESSION HOME
ANDREWS CROSSING PHASE 3
LOT 7 / HOUSE 28 VICTORIA WAY
LOWER LEVEL - APPROX. 840 SQ. FT.

HAYHOE™
— HOMES —
 CREATED JULY 2020
 E40.E

This plan is the property of Hayhoe Homes and any reproduction of this plan, its concepts or ideas, is strictly prohibited. Plans and specifications are approximate and are subject to change without notice. Finished area and room dimensions will change depending on front elevation selection. E40.E. Copyright 2020



HAMILTON
QUICK POSSESSION HOME
ANDREWS CROSSING PHASE 3
LOT 7 / HOUSE 28 VICTORIA WAY
MAIN FLOOR PLAN - APPROX. 1,428 SQ. FT.

This plan is the property of Hayhoe Homes and any reproduction of this plan, its concepts or ideas, is strictly prohibited. Plans and specifications are approximate and are subject to change without notice. Finished area and room dimensions will change depending on front elevation selection. E.40.E 2020

HAYHOE™
—HOMES—
CREATED JULY 2020
 E40.E.