



ADDISON

HAYHOE™
—HOMES—

FRONT ELEVATION 'A'

This plan is the property of Hayhoe Homes and any reproduction of this plan, its concepts or ideas, is strictly prohibited. Plans and specifications are approximate and are subject to change without notice. Finished area and room dimensions will change depending on front elevation selection. E.40.E. Copyright 2019

CREATED FEB. 2020



ADDISON

HAYHOE™
—HOMES—

FRONT ELEVATION 'B'

This plan is the property of Hayhoe Homes and any reproduction of this plan, its concepts or ideas, is strictly prohibited. Plans and specifications are approximate and are subject to change without notice. Finished area and room dimensions will change depending on front elevation selection. E.40.E. Copyright 2019

CREATED FEB. 2020



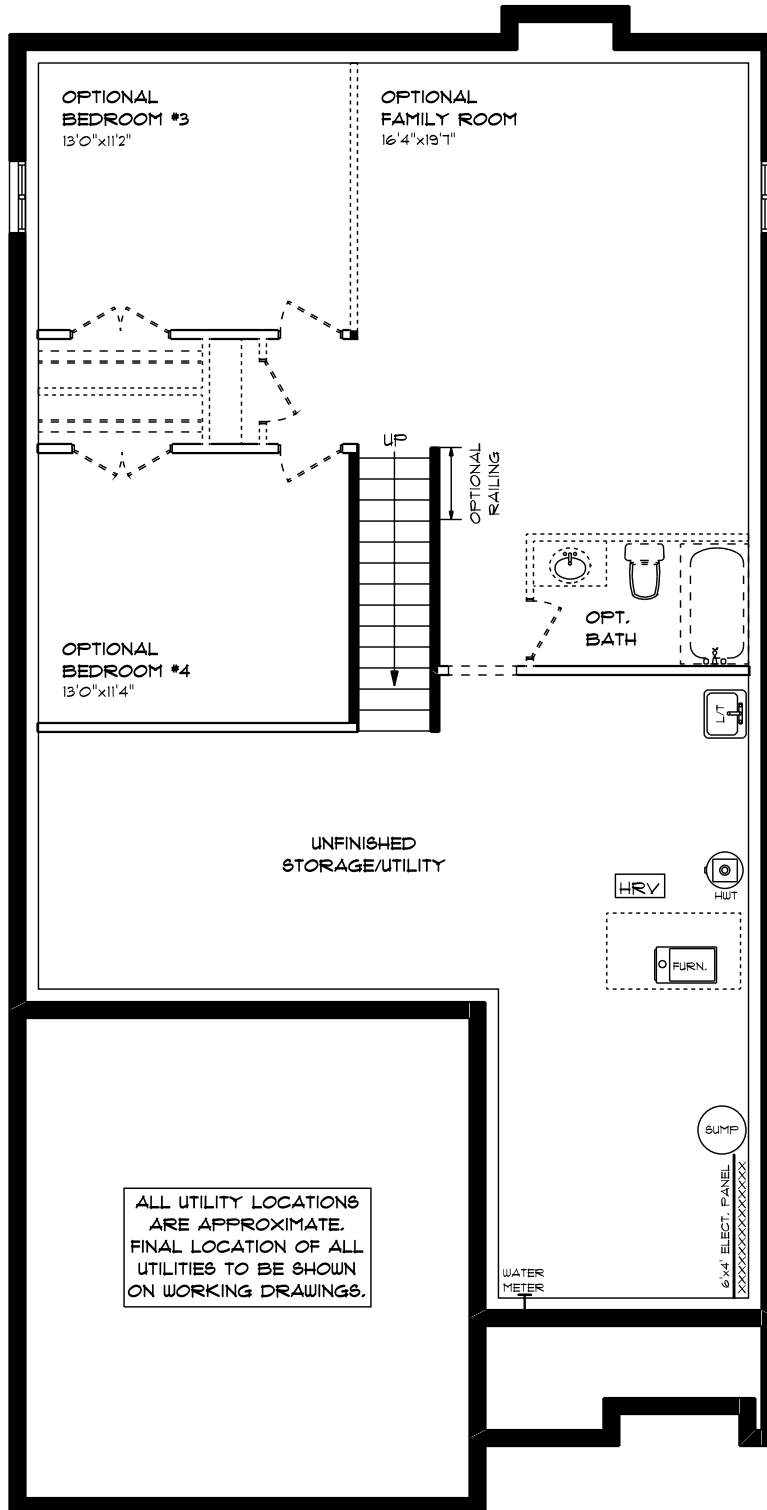
ADDISON

HAYHOE™
—HOMES—

FRONT ELEVATION 'C'

This plan is the property of Hayhoe Homes and any reproduction of this plan, its concepts or ideas, is strictly prohibited. Plans and specifications are approximate and are subject to change without notice. Finished area and room dimensions will change depending on front elevation selection. E.O.E. Copyright 2019

CREATED FEB. 2020



ALL UTILITY LOCATIONS
ARE APPROXIMATE.
FINAL LOCATION OF ALL
UTILITIES TO BE SHOWN
ON WORKING DRAWINGS.

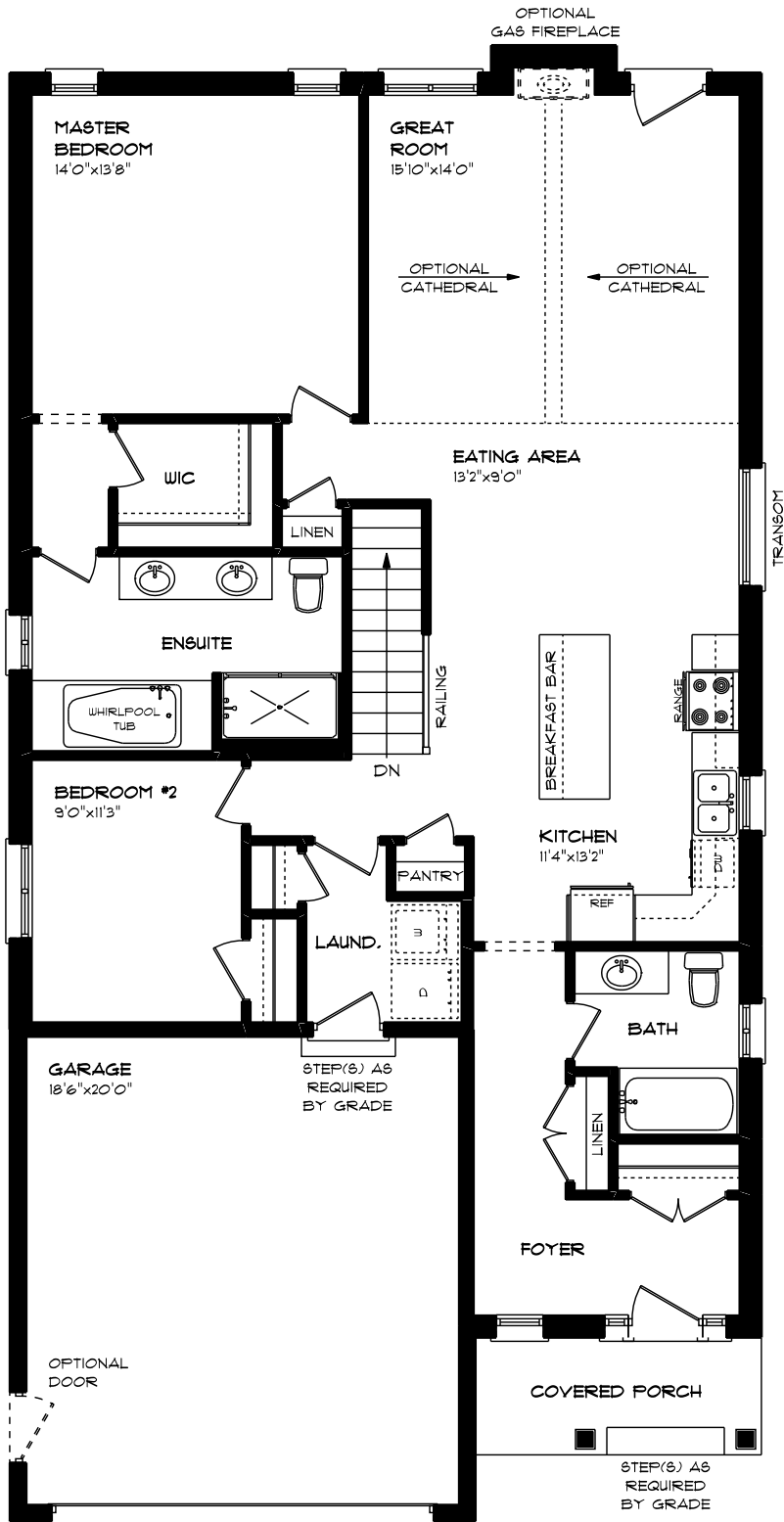
ADDISON

LOWER LEVEL PLAN 'A'
UNFINISHED



This plan is the property of Hayhoe Homes and any reproduction of this plan, its concepts or ideas, is strictly prohibited. Plans and specifications are approximate and are subject to change without notice. Finished area and room dimensions will change depending on front elevation selection. E.A.O.E. Copyright 2019.

CREATED FEB. 2020



ADDISON



MAIN FLOOR PLAN 'A'

APPROX. 1,478 SQ. FT.

This plan is the property of Hayhoe Homes and any reproduction of this plan, its concepts or ideas, is strictly prohibited. Plans and specifications are approximate and are subject to change without notice. Finished area and room dimensions will change depending on front elevation selection. E.A.O.E. Copyright 2019.