

SEMI - DETACHED



36 DUNNING WAY

ORCHARD PARK MEADOWS, ST. THOMAS

THE DETAILS

PRICE	\$ 565,000
CLOSING DATE	OCTOBER 8, 2024
LOT NUMBER	27B
BEDROOMS	2
BATHS	2
SQFT	1225
GARAGE	1
MODEL	1 STOREY SEMI

HAYHOE™
— HOMES —



SALES PROFESSIONAL

DAVE MATTHEWS

519.633.9215

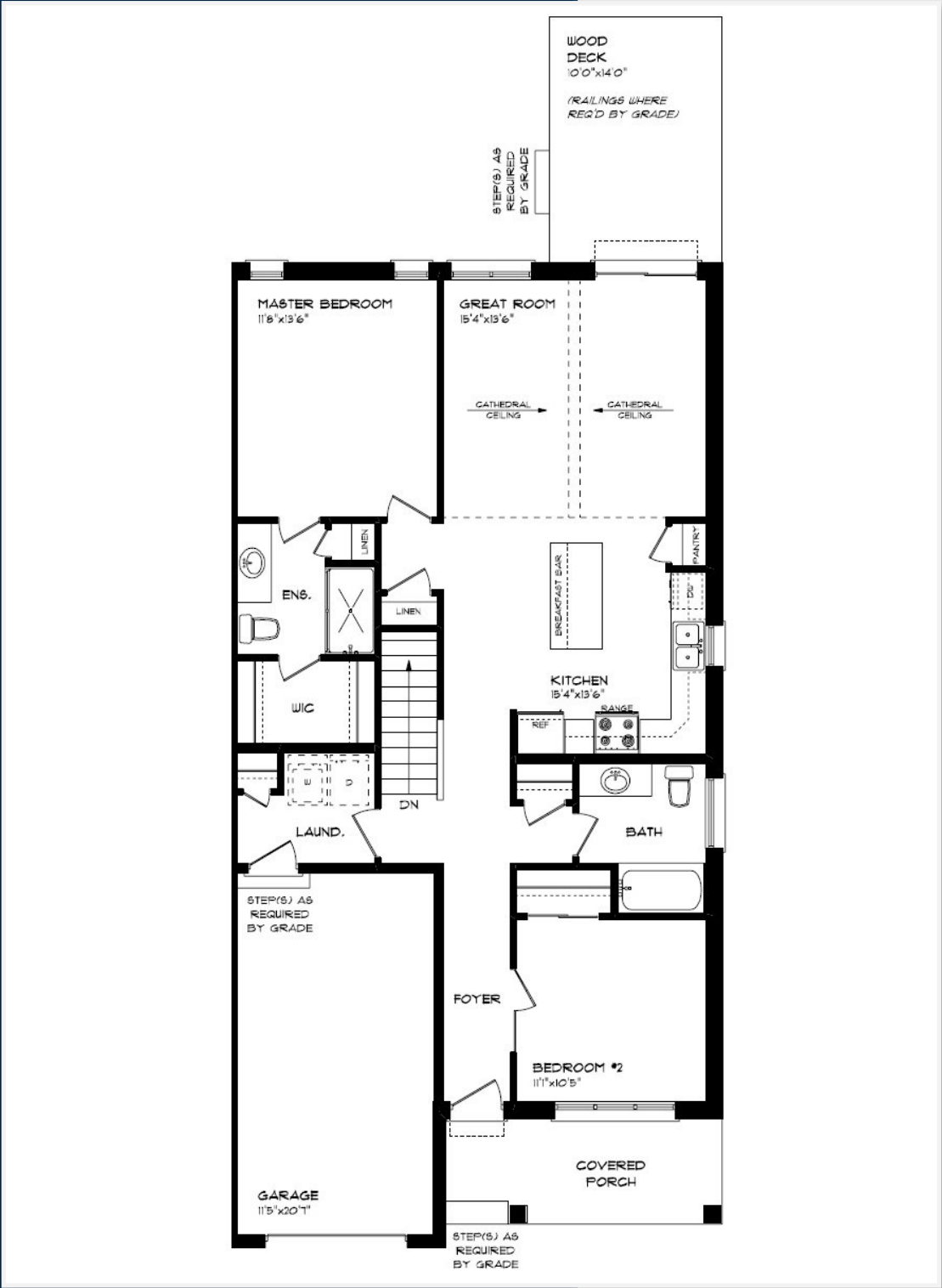
dave.matthews@hayhoehomes.com

SITE PLAN



MAIN FLOOR

36 DUNNING WAY, ST. THOMAS



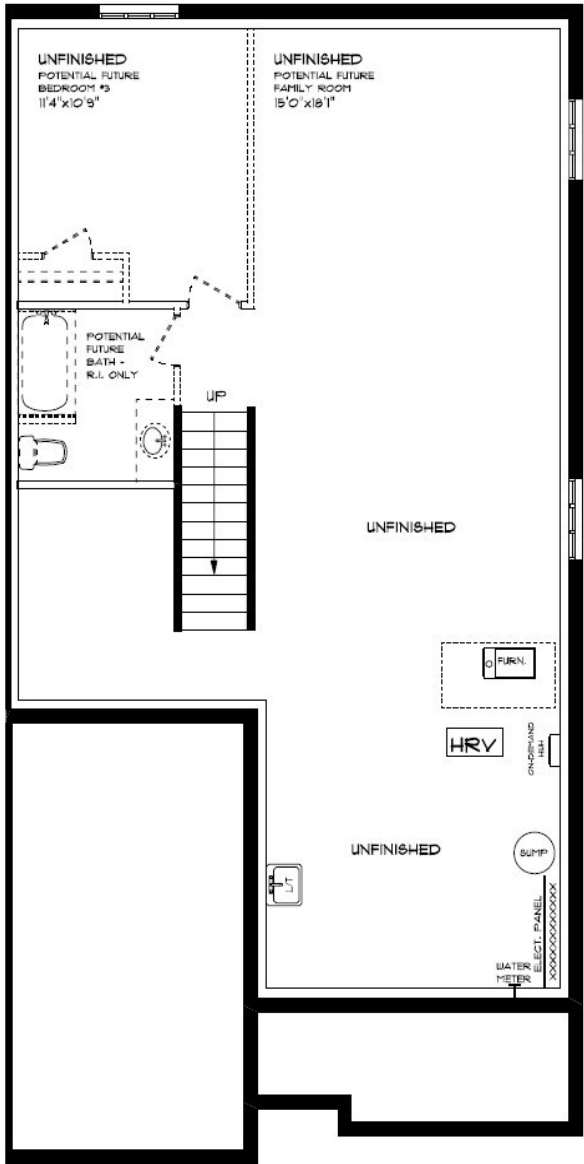
MAIN FLOOR:
APPROX 1225 SQFT

- SINGLE CAR GARAGE
- KITCHEN ISLAND
- VINYL PLANK FLOORING
- QUARTZ COUNTERTOPS



BASEMENT

36 DUNNING WAY, ST. THOMAS



BASEMENT:
UNFINISHED

AIR CONDITIONING
GAS FURNACE WITH HRV
HUMIDIFIER
NEW HOME WARRANTY

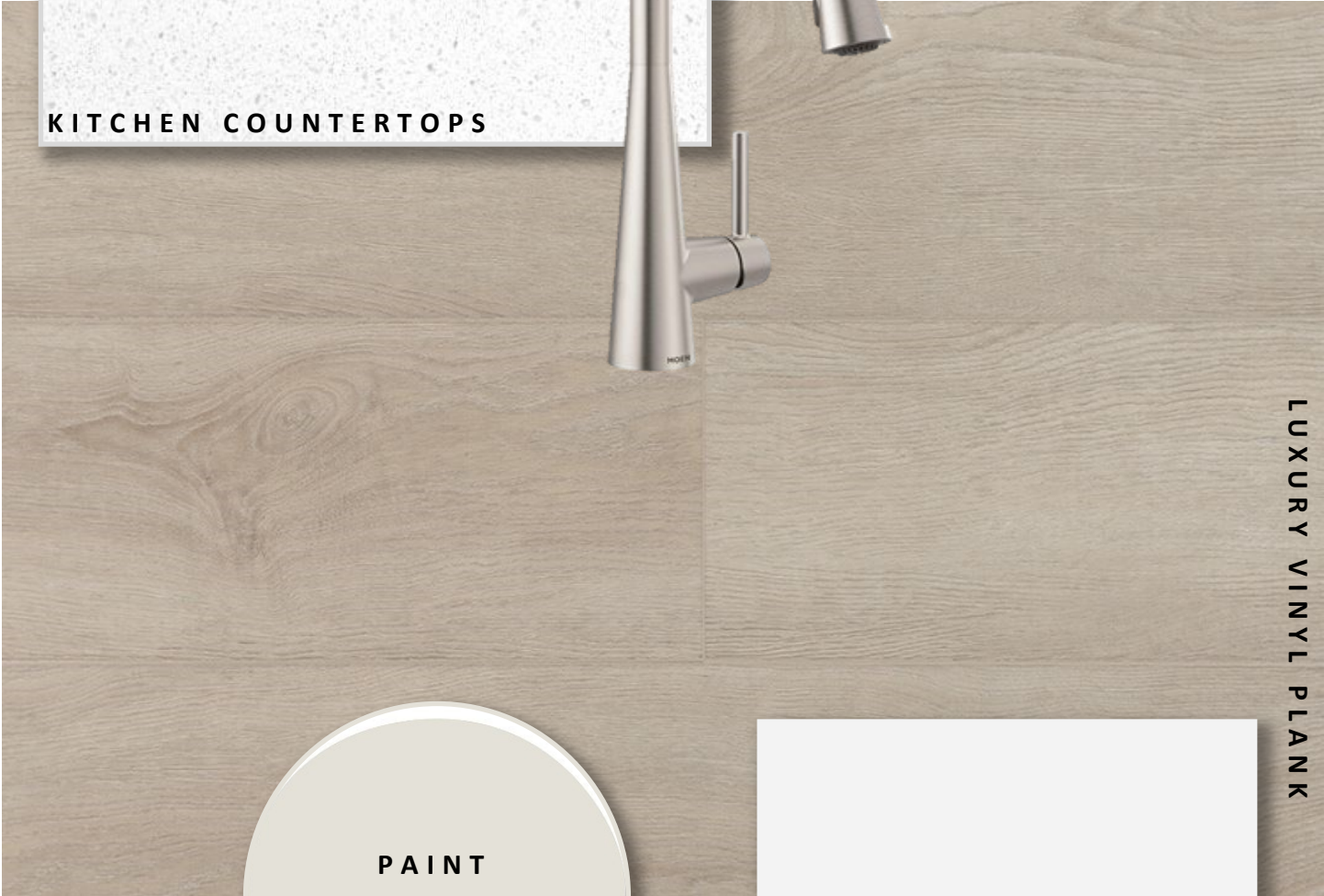
HAYHOE™
— HOMES —

INTERIOR FINISHES

36 DUNNING



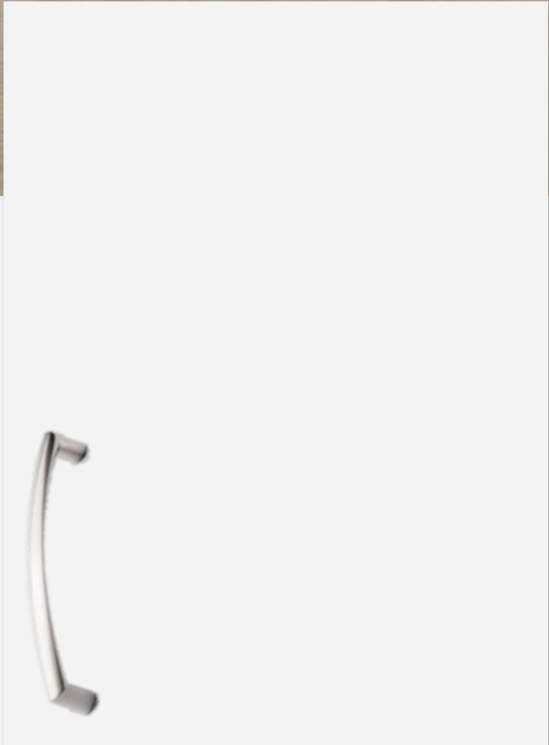
KITCHEN COUNTERTOPS



LUXURY VINYL PLANK



PAINT
COLOUR



KITCHEN
CABINETRY



ISLAND PENDANTS



FOYER
FIXTURE



PRICE, PRODUCTS, COLOURS & FEATURES ARE SUBJECT TO CHANGE WITHOUT NOTICE.
COLOURS SHOWN MAY VARY FROM INSTALLED MATERIALS. E & O.E

CREATED SEPT 1, 2022

INTERIOR FINISHES

36 DUNNING

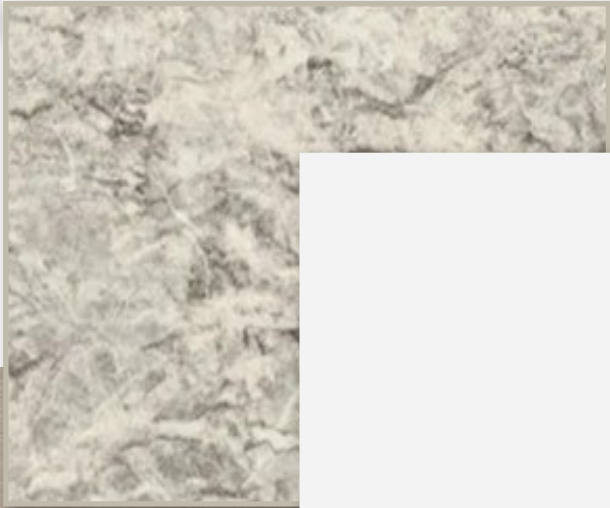
INTERIOR DOOR STYLE



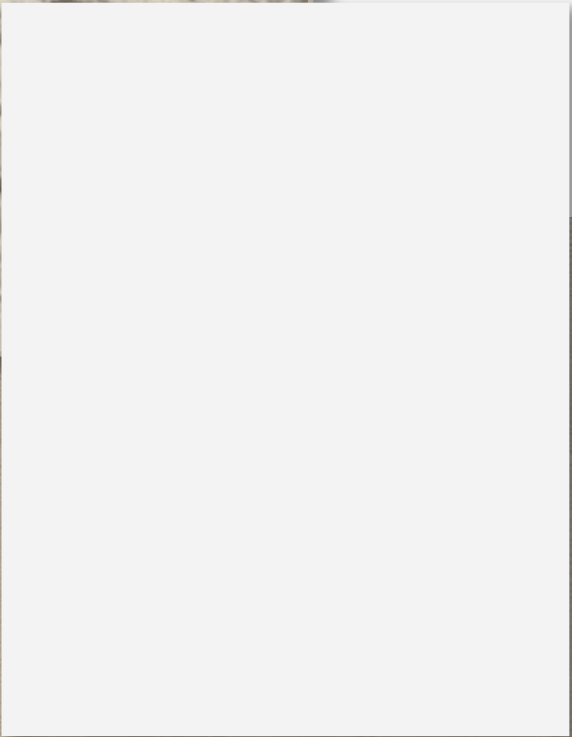
CARPET



BATHROOM
COUNTERTOP



BATHROOM
CABINETRY



LUXURY VINYL PLANK

