

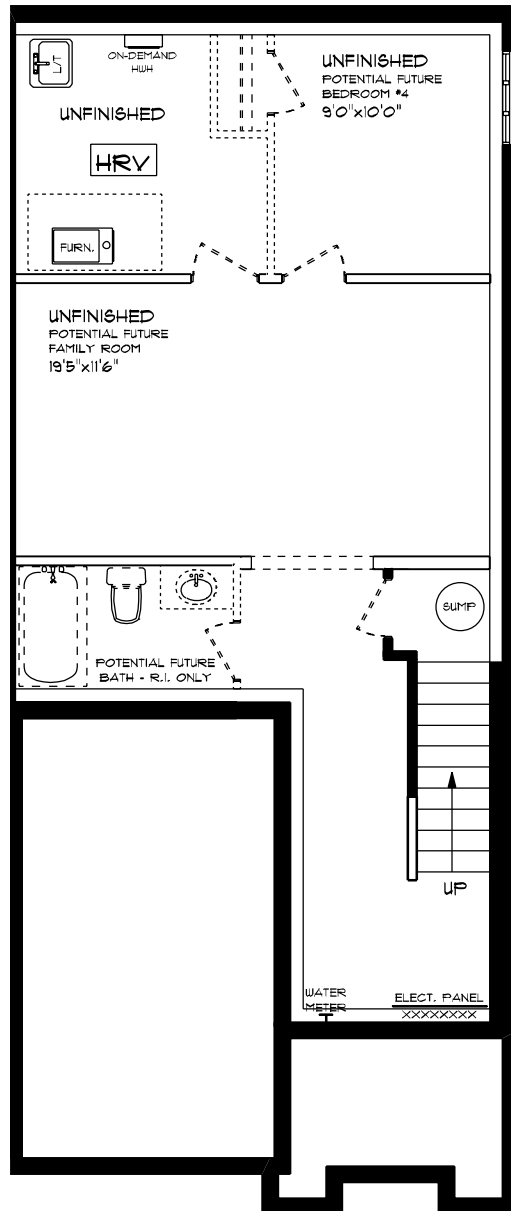


T O W N - 9' MAIN FLOOR CEILING  
 LOT 44F (#127) CORTLAND TERRACE

FRONT ELEVATION  
 APPROX. 1,623 TOTAL SQ. FT.

This plan is the property of Haghighi Homes and any reproduction of this plan, its concepts or ideas, is strictly prohibited. Plans and specifications are approximate and are subject to change without notice. Finished area and room dimensions will change depending on front elevation selection.

E. & O.E.

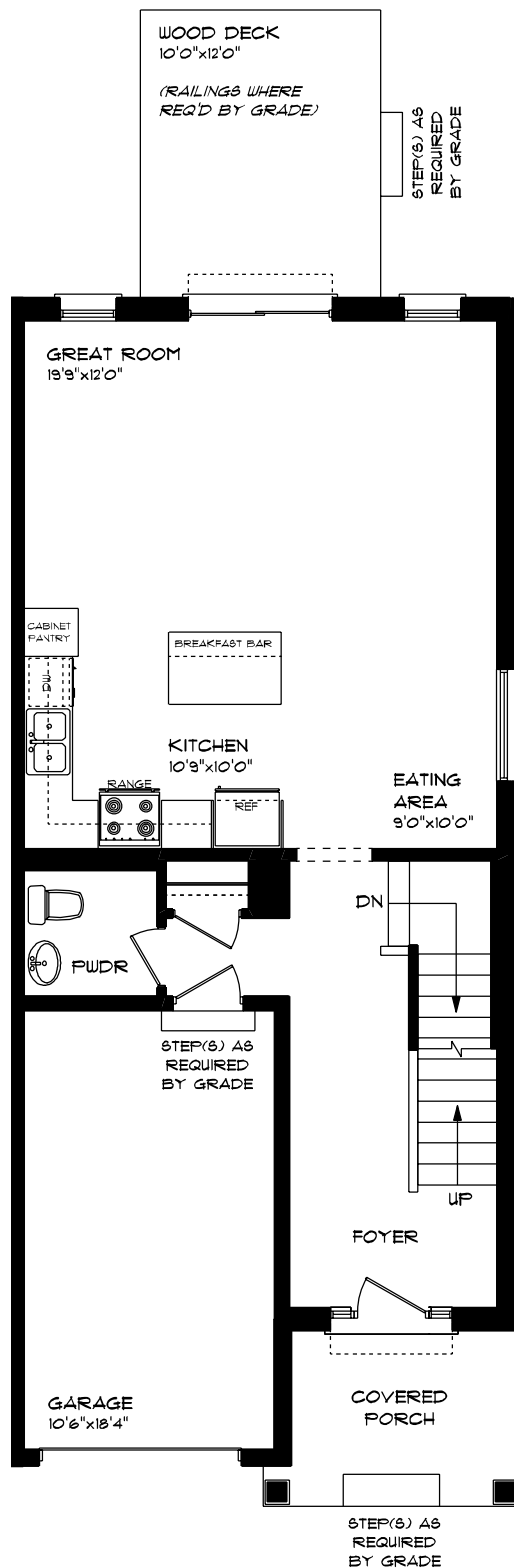


TOWN  
LOT 44F (#121) CORTLAND TERRACE

# LOWER LEVEL PLAN UNFINISHED

This plan is the property of H&J Homes and any reproduction of this plan, its concepts or ideas, is strictly prohibited. Plans and specifications are approximate and are subject to change without notice. Finished area and room dimensions will change depending on front elevation selection.

E. & O.E.

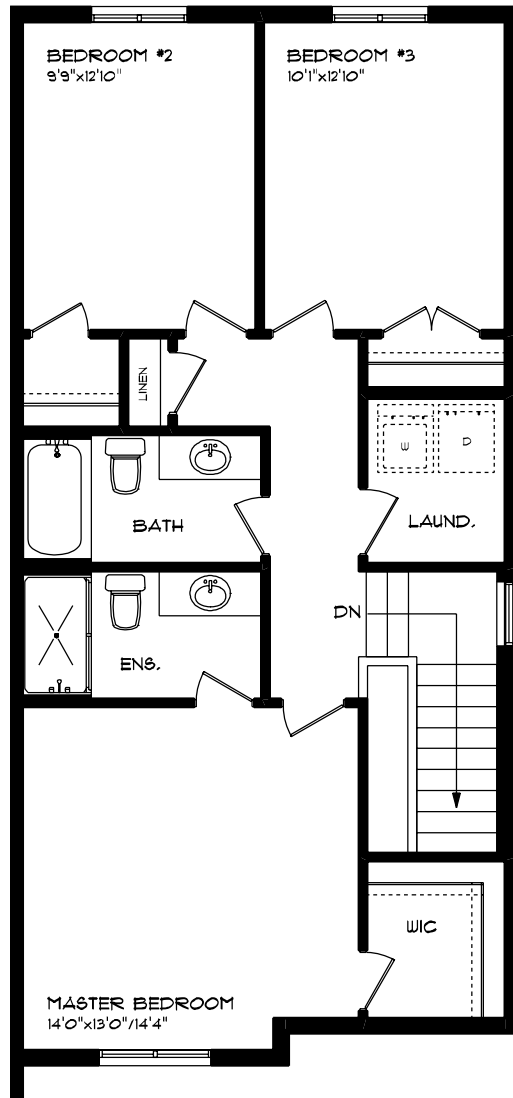


TOWN - 9' MAIN FLOOR CEILING  
LOT 44F (#121) CORTLAND TERRACE

MAIN FLOOR PLAN  
APPROX. 168 SQ. FT.

This plan is the property of Hajos Homes and any reproduction of this plan,  
its concepts or ideas, is strictly prohibited. Plans and specifications are  
approximate and are subject to change without notice. Finished area and room  
dimensions will change depending on front elevation selection.

E. & O.E.



TOWN  
LOT 44F (#121) CORTLAND TERRACE

SECOND FLOOR PLAN  
APPROX. 855 SQ. FT.

This plan is the property of H&H Homes and any reproduction of this plan, its concepts or ideas, is strictly prohibited. Plans and specifications are approximate and are subject to change without notice. Finished area and room dimensions will change depending on front elevation selection.

E. & O.E.