

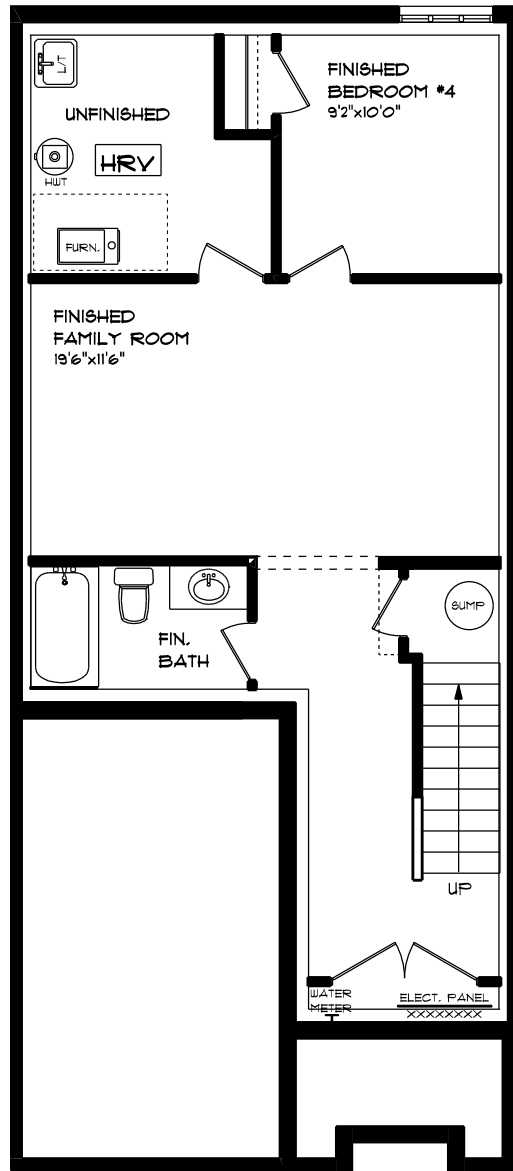


T O W N - 9' MAIN FLOOR CEILING
LOT 48B (#28) MARTIN STREET

FRONT ELEVATION
APPROX. 2,150 TOTAL SQ. FT.

This plan is the property of Hagood Homes and any reproduction of this plan, its concepts or ideas, is strictly prohibited. Plans and specifications are approximate and are subject to change without notice. Finished area and room dimensions will change depending on front elevation selection.

E. & O.E.

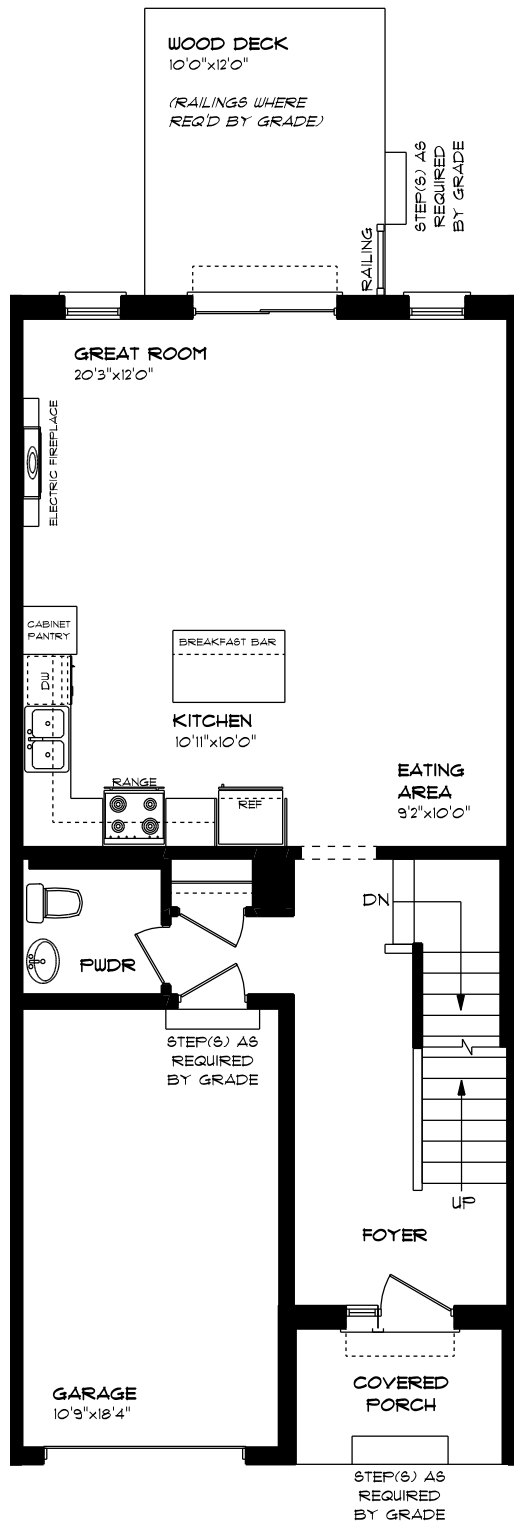


T O W N
 LOT 48B (#28) MARTIN STREET

LOWER LEVEL PLAN
 APPROX. 550 SQ. FT.

This plan is the property of Hayhoe Homes and any reproduction of this plan, its concepts or ideas, is strictly prohibited. Plans and specifications are approximate and are subject to change without notice. Finished area and room dimensions will change depending on front elevation selection.

E. 4 O.E.

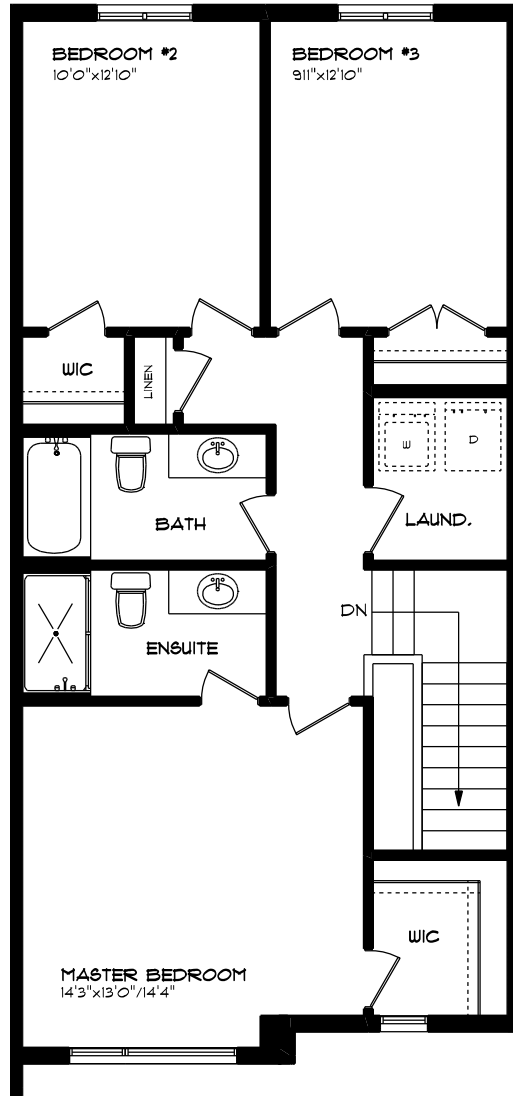


T O W N - 9' MAIN FLOOR CEILING
LOT 48B (#28) MARTIN STREET

MAIN FLOOR PLAN
APPROX. 156 SQ. FT.

This plan is the property of Hayhoe Homes and any reproduction of this plan, its concepts or ideas, is strictly prohibited. Plans and specifications are approximate and are subject to change without notice. Finished area and room dimensions will change depending on front elevation selection.

E. & O.E.



T O W N
 LOT 48B (#28) MARTIN STREET

SECOND FLOOR PLAN
 APPROX. 844 SQ. FT.

This plan is the property of Hayhoe Homes and any reproduction of this plan, its concepts or ideas, is strictly prohibited. Plans and specifications are approximates and are subject to change without notice. Finished area and room dimensions will change depending on front elevation selection.

E. & O.E.