

SEMI - DETACHED



128 CORTLAND TERRACE

ORCHARD PARK MEADOWS, ST. THOMAS

THE DETAILS

PRICE	\$ 599,000
CLOSING DATE	NOVEMBER 20, 2023
LOT NUMBER	55A
BEDROOMS	2
BATHS	2
SQFT	1225
GARAGE	1
MODEL	1 STOREY SEMI

HAYHOE™
— HOMES —



SALES PROFESSIONAL

DAVE MATTHEWS

519.633.9215

dave.matthews@hayhoehomes.com

S I T E P L A N



128 CORTLAND

EXTERIOR FEATURES:

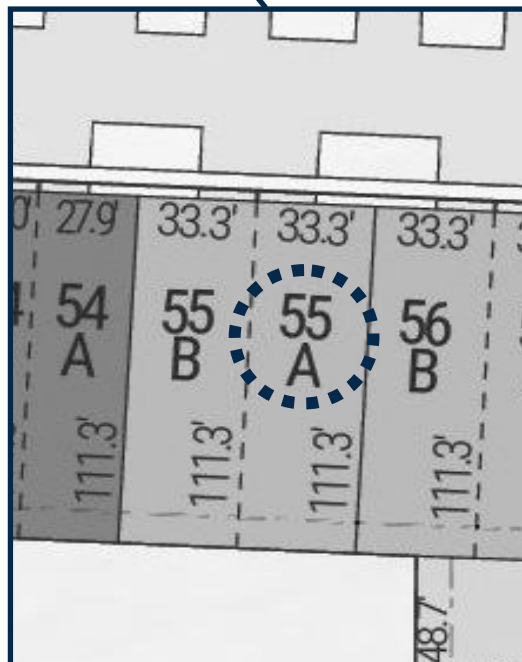
KEYLESS ENTRY

TREATED WOOD DECK

ASPHALT DRIVEWAY

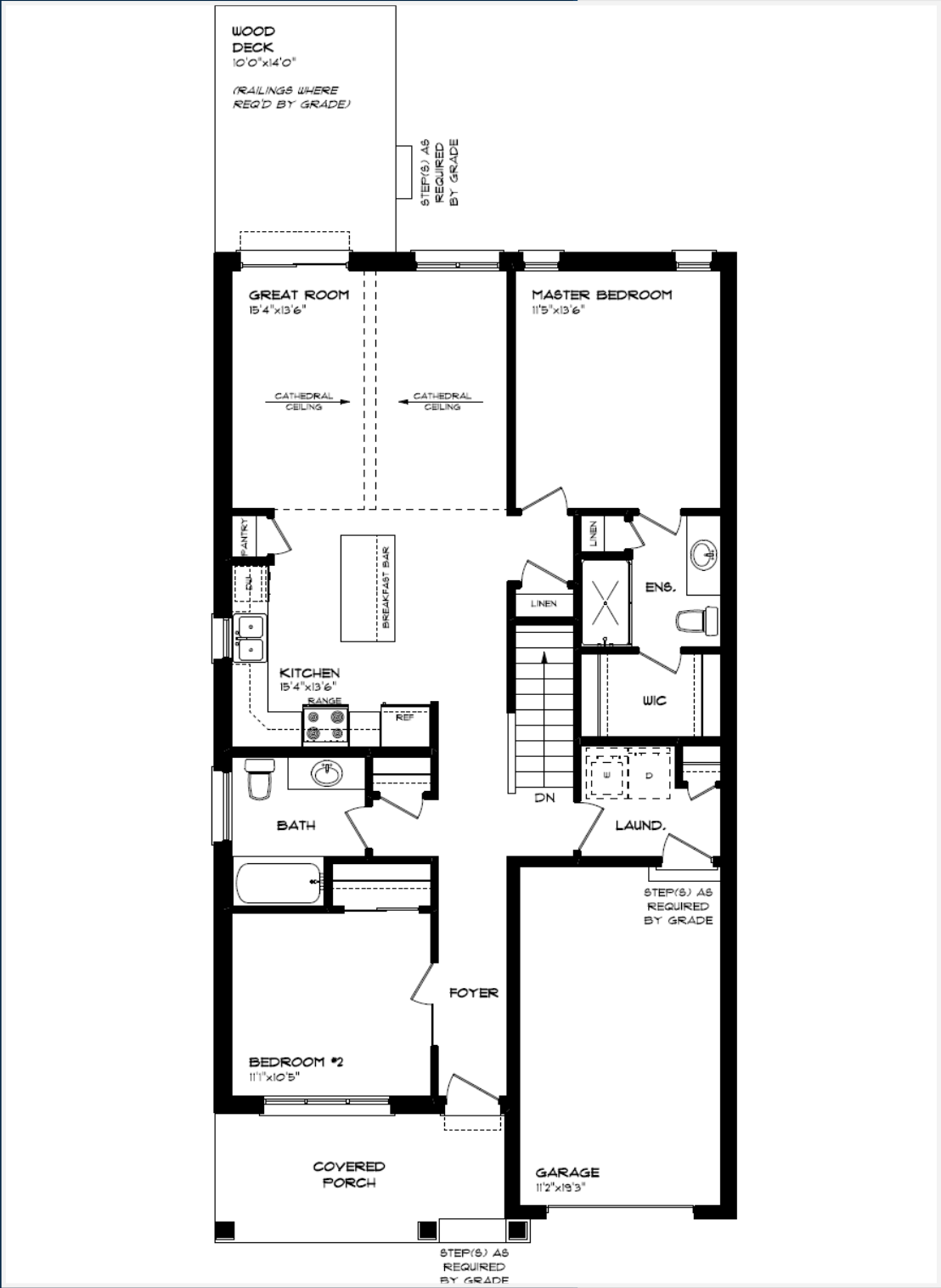
WALKING TRAILS

HAYHOE™ — HOMES —

The logo for Orchard Meadows Park is a circular emblem. The top half of the circle contains the word "ORCHARD" in a light blue, sans-serif font, with a stylized light blue arc below it. The bottom half contains the word "PARK" in the same font, with a stylized light blue arc above it. In the center, the word "MEADOWS" is written in a large, bold, olive-green sans-serif font.

MAIN FLOOR

128 CORTLAND TERRACE, ST. THOMAS



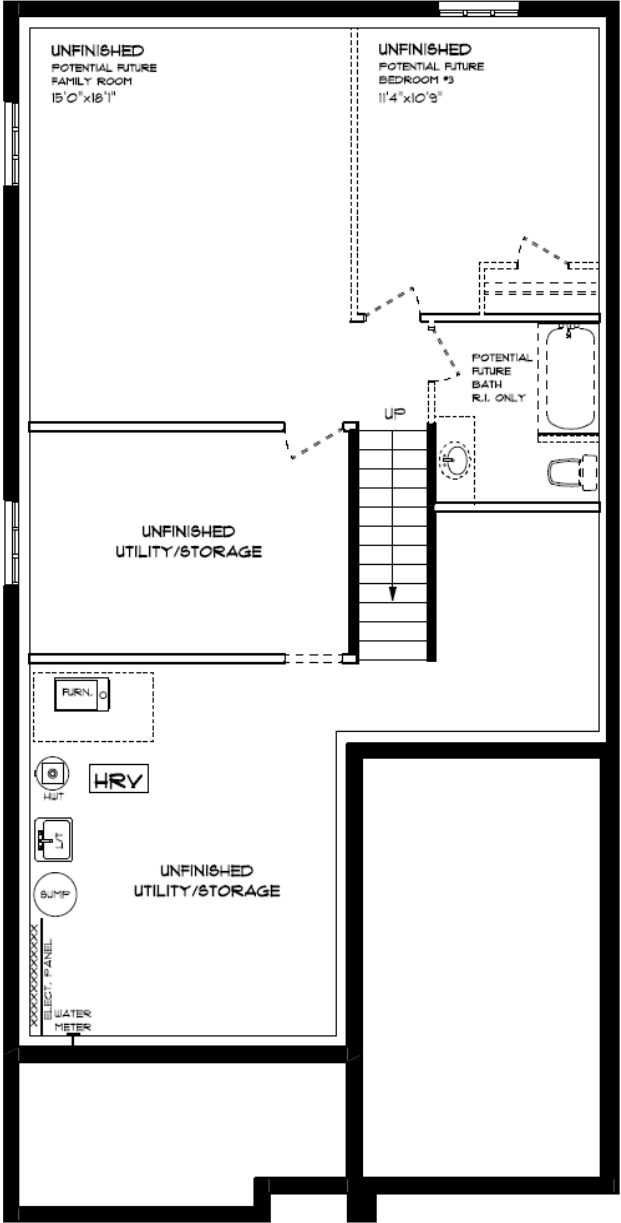
- SINGLE CAR GARAGE
- KITCHEN ISLAND
- VINYL PLANK FLOORING
- CATHEDRAL CEILING
- QUARTZ COUNTERTOPS

MAIN FLOOR:
APPROX 1225 SQFT



BASEMENT

128 CORTLAND TERRACE, ST. THOMAS



BASEMENT:
UNFINISHED

AIR CONDITIONING
GAS FURNACE WITH HRV
HUMIDIFIER
NEW HOME WARRANTY

HAYHOE™
— HOMES —

INTERIOR FINISHES

128 CORTLAND



KITCHEN COUNTERTOPS

LUXURY VINYL PLANK

PAINT
COLOUR

FOYER
FIXTURE

INTERIOR FINISHES

128 CORTLAND

INTERIOR DOOR STYLE

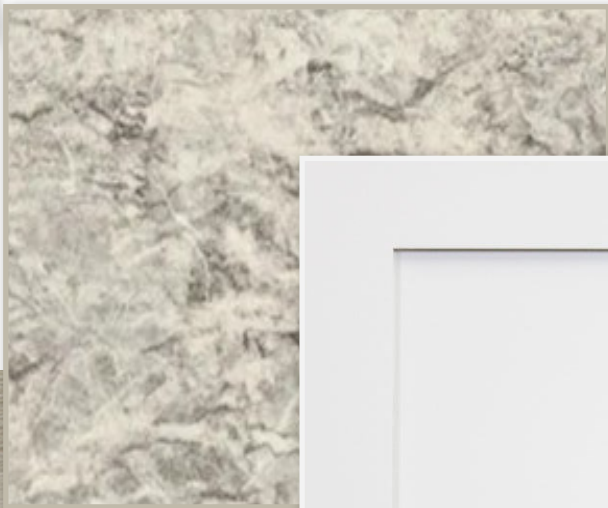


CARPET



BATHROOM
COUNTERTOP

BATHROOM
CABINETRY



LUXURY VINYL PLANK



PRICE, PRODUCTS, COLOURS & FEATURES ARE SUBJECT TO CHANGE WITHOUT NOTICE.
COLOURS SHOWN MAY VARY FROM INSTALLED MATERIALS. E & O.E

CREATED AUGUST 31, 2022