

T O W N H O M E

PREMIUM FEATURES



267 RENAISSANCE DR

ORCHARD PARK MEADOWS, ST. THOMAS

THE DETAILS

PRICE	\$ 615,000
CLOSING DATE	May 10, 2023
LOT NUMBER	65C
BEDROOMS	3 + 1
BATHS	3.5
SQFT	2150
GARAGE	1
MODEL	2 STOREY TOWN

HAYHOE™
— HOMES —



SALES PROFESSIONAL

DAVE MATTHEWS

519.633.9215

dave.matthews@hayhoehomes.com

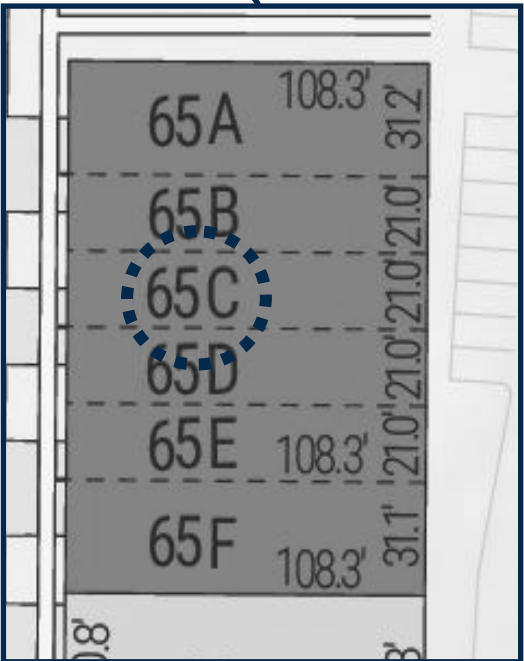
SITE PLAN



267 RENAISSANCE

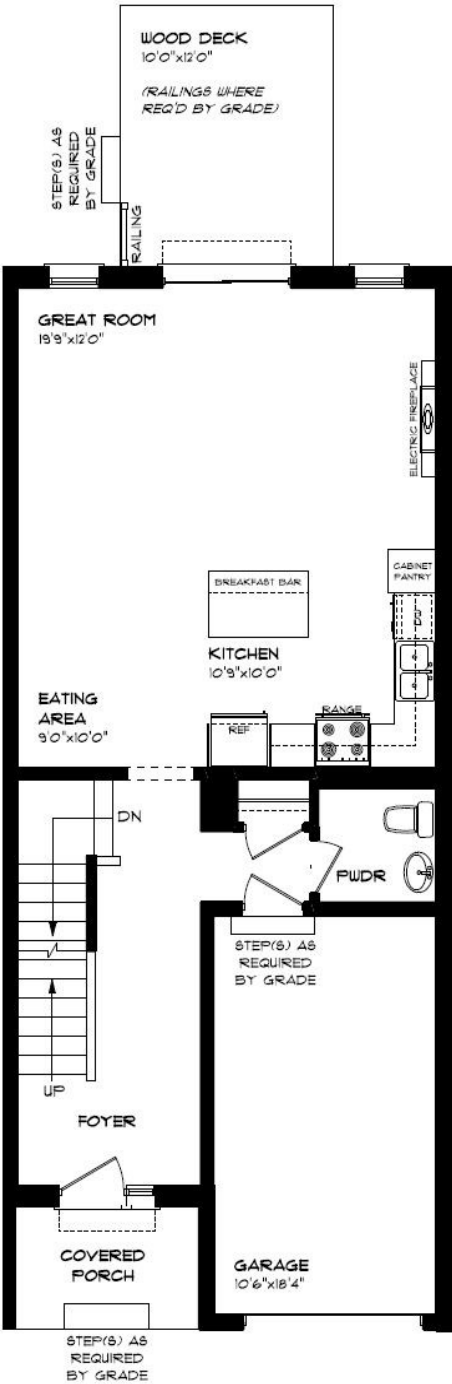
EXTERIOR FEATURES:

- KEYLESS ENTRY
- TREATED WOOD DECK
- BBQ GAS LINE
- ASPHALT DRIVEWAY
- WALKING TRAILS



MAIN FLOOR

267 RENAISSANCE DR, ST. THOMAS



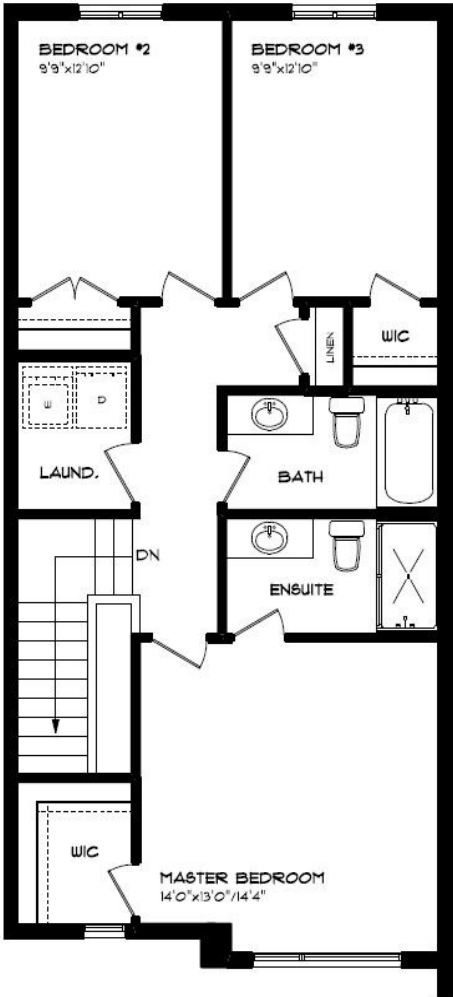
- SINGLE CAR GARAGE
- KITCHEN ISLAND
- VINYL PLANK FLOORING
- ELECTRIC FIREPLACE
- QUARTZ COUTNERTOPS
- KITCHEN BACKSPALASH

MAIN FLOOR:
APPROX 756 SQFT

HAYHOETM
—HOMES—

SECOND FLOOR

267 RENAISSANCE DR, ST. THOMAS



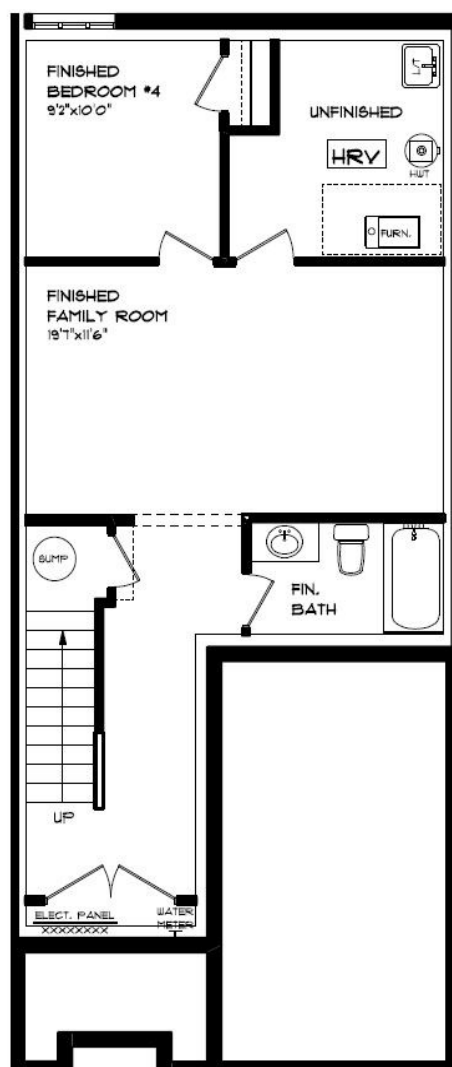
SECOND FLOOR LAUNDRY
PROFESSIONALLY DESIGNED
CARPET FLOORING
VINYL PLANK FLOORING
WALK-IN CLOSET

SECOND FLOOR:
APPROX 844 SQFT



BASEMENT

267 RENAISSANCE DR, ST. THOMAS



CARPET FLOORING
VINYL PLANK FLOORING
AIR CONDITIONING
GAS FURNACE WITH HRV
HUMIDIFIER
NEW HOME WARRANTY

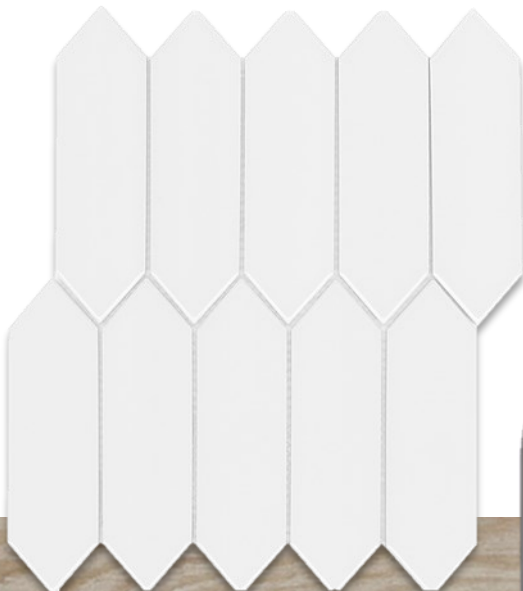
BASEMENT:
APPROX 550 SQFT

HAYHOE™
— HOMES —

INTERIOR FINISHES

267 RENAISSANCE DR

KITCHEN BACKSPLASH



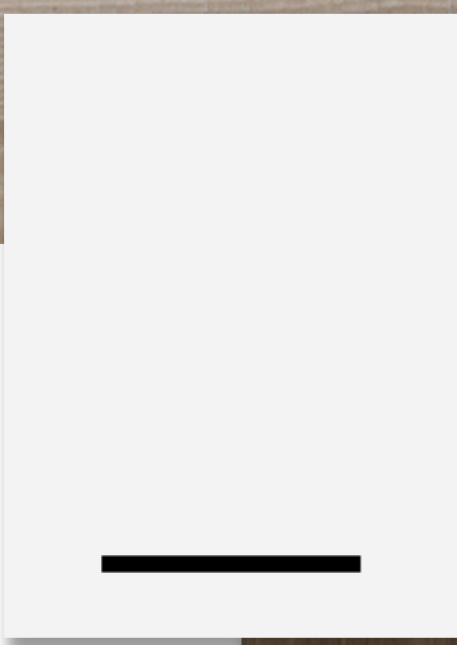
KITCHEN COUNTERTOPS



LUXURY VINYL PLANK



PAINT COLOUR



KITCHEN CABINETRY



ISLAND PENDANTS



FOYER FIXTURE



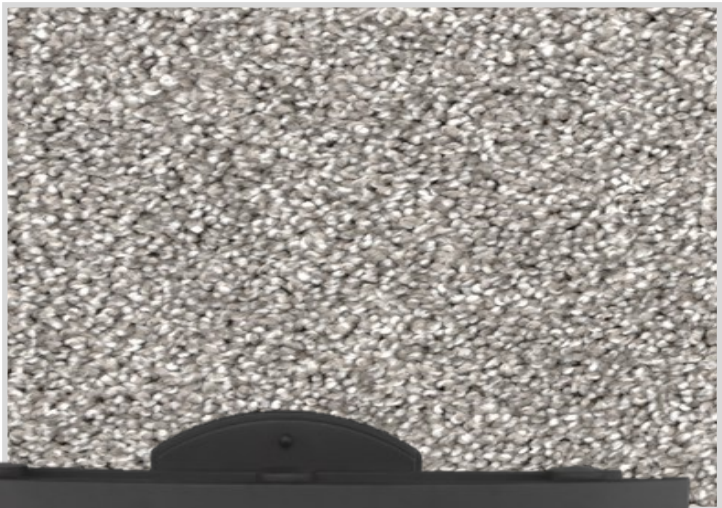
INTERIOR FINISHES

267 RENAISSANCE DR

INTERIOR DOOR STYLE

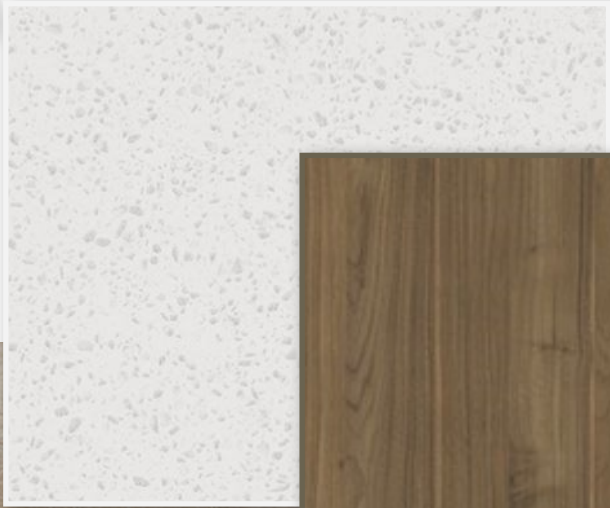


CARPET



BATHROOM
COUNTERTOP

BATHROOM
CABINETRY



LUXURY VINYL PLANK

