

# T O W N H O M E

## PREMIUM FEATURES



## 271 RENAISSANCE DR

ORCHARD PARK MEADOWS, ST. THOMAS

## THE DETAILS

PRICE	\$ 615,000
CLOSING DATE	May 12, 2023
LOT NUMBER	65E
BEDROOMS	3 + 1
BATHS	3.5
SQFT	2150
GARAGE	1
MODEL	2 STOREY TOWN

**HAYHOE™**  
— HOMES —



## SALES PROFESSIONAL

DAVE MATTHEWS

519.633.9215

dave.matthews@hayhoehomes.com

# SITE PLAN

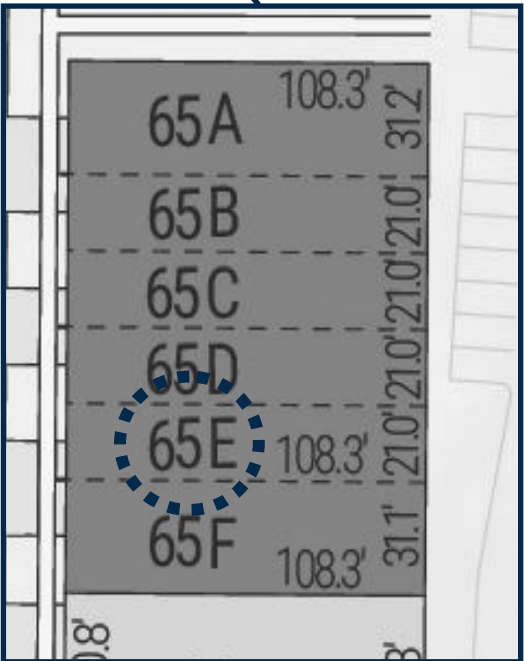


## 271 RENAISSANCE

### EXTERIOR FEATURES:

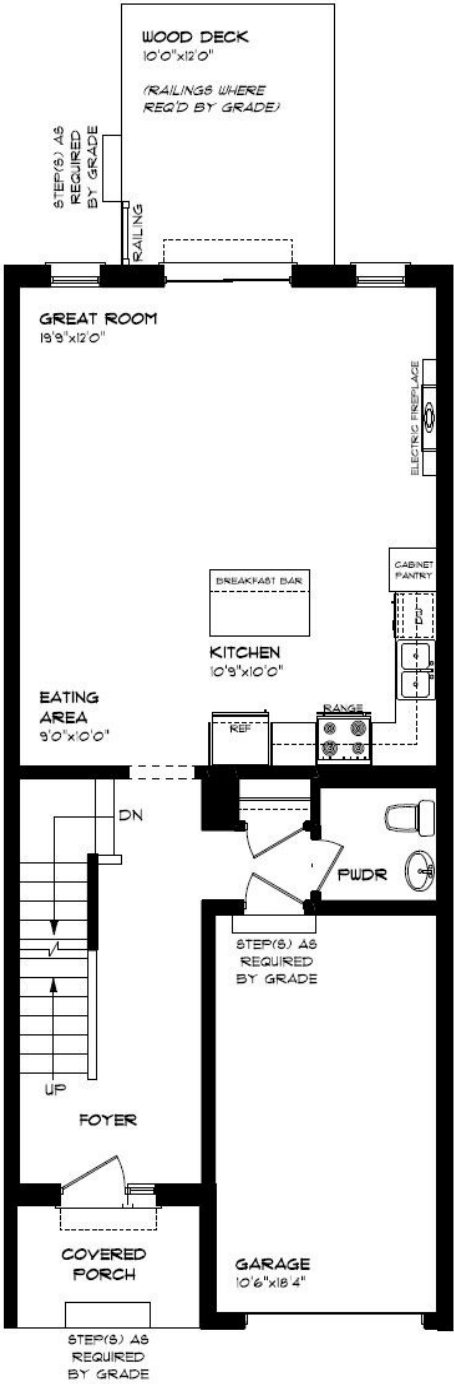
- KEYLESS ENTRY
- TREATED WOOD DECK
- BBQ GAS LINE
- ASPHALT DRIVEWAY
- WALKING TRAILS

**HAYHOE**<sup>TM</sup>  
HOMES



# MAIN FLOOR

271 RENAISSANCE DR, ST. THOMAS



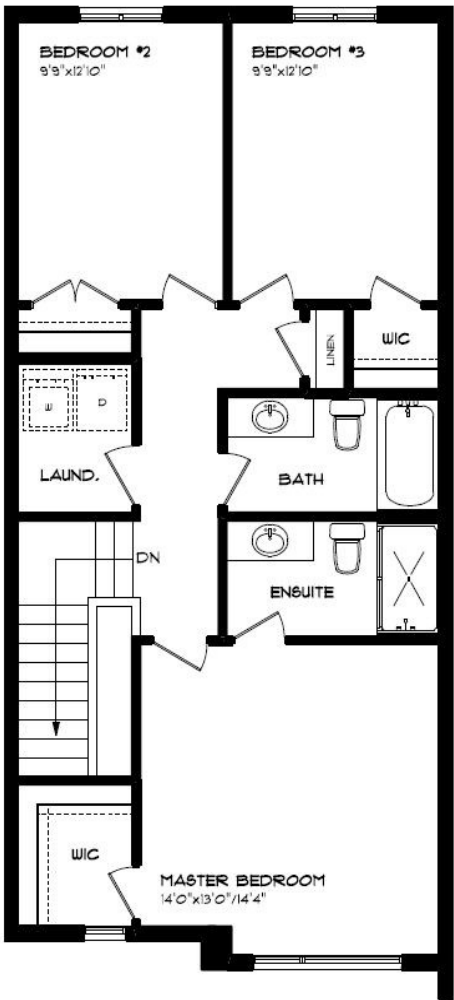
- SINGLE CAR GARAGE
- KITCHEN ISLAND
- VINYL PLANK FLOORING
- ELECTRIC FIREPLACE
- QUARTZ COUTNERTOPS
- KITCHEN BACKSPALASH

MAIN FLOOR:  
APPROX 756 SQFT



# SECOND FLOOR

271 RENAISSANCE DR, ST. THOMAS



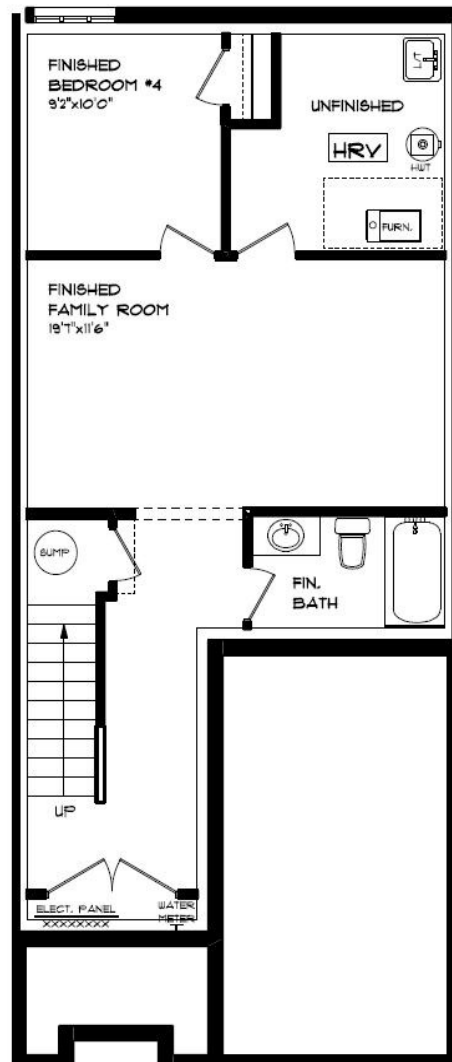
SECOND FLOOR LAUNDRY  
PROFESSIONALLY DESIGNED  
CARPET FLOORING  
VINYL PLANK FLOORING  
WALK-IN CLOSET

SECOND FLOOR:  
APPROX 860 SQFT



# BASEMENT

271 RENAISSANCE DR, ST. THOMAS



CARPET FLOORING  
VINYL PLANK FLOORING  
AIR CONDITIONING  
GAS FURNACE WITH HRV  
HUMIDIFIER  
NEW HOME WARRANTY

BASEMENT:  
APPROX 550 SQFT

**HAYHOE™**  
— HOMES —

# INTERIOR FINISHES

271 RENAISSANCE DR

KITCHEN BACKSPLASH



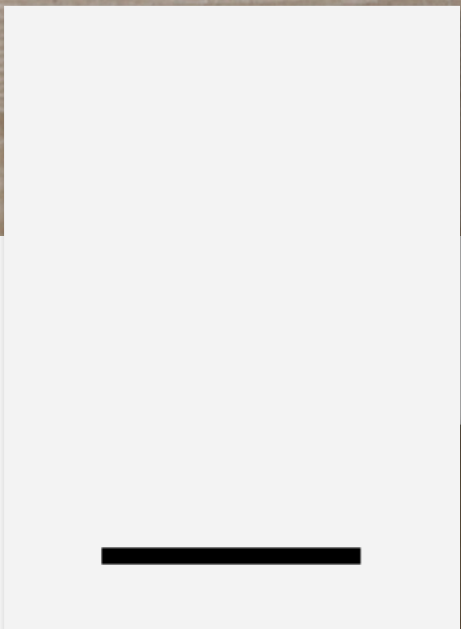
KITCHEN COUNTERTOPS



LUXURY VINYL PLANK



PAINT COLOUR



KITCHEN CABINETRY

ISLAND PENDANTS



FOYER FIXTURE



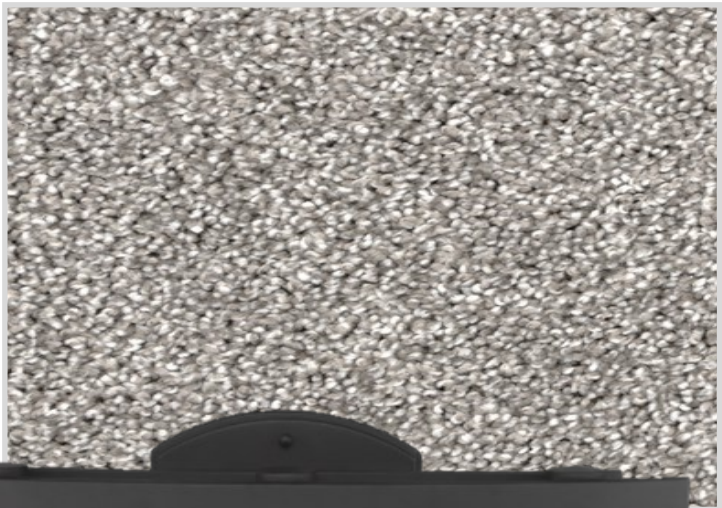
# INTERIOR FINISHES

271 RENAISSANCE DR

INTERIOR DOOR STYLE

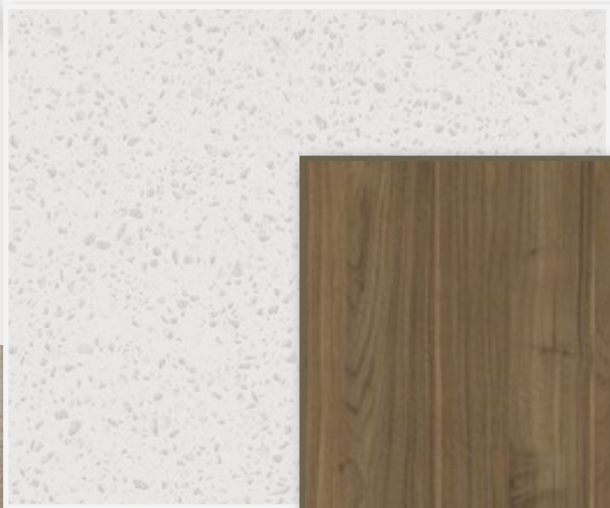


CARPET



BATHROOM  
COUNTERTOP

BATHROOM  
CABINETRY



LUXURY VINYL PLANK

