

T O W N H O M E

ESSENTIAL FEATURES



257 RENAISSANCE DR

ORCHARD PARK MEADOWS, ST. THOMAS

THE DETAILS

PRICE	\$ 555,000
CLOSING DATE	June 13, 2023
LOT NUMBER	66B
BEDROOMS	3
BATHS	2.5
SQFT	1624
GARAGE	1
MODEL	2 STOREY TOWN

HAYHOE™
— HOMES —



SALES PROFESSIONAL

DAVE MATTHEWS

519.633.9215

dave.matthews@hayhoehomes.com

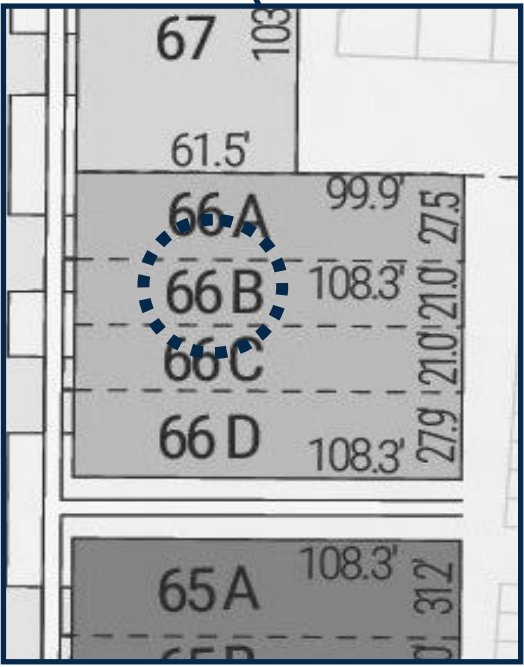
SITE PLAN



257 RENAISSANCE

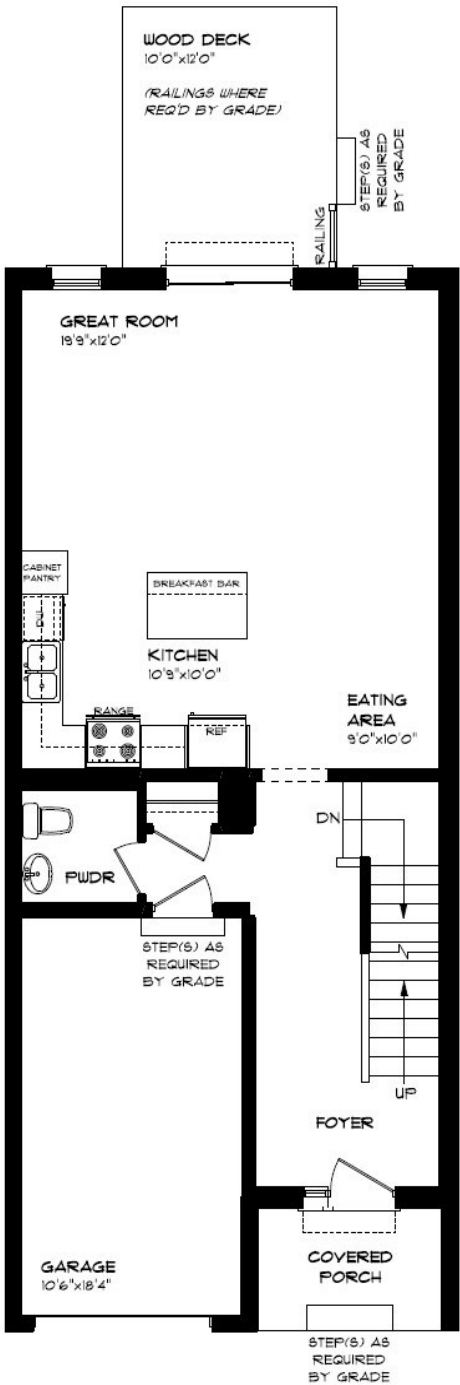
EXTERIOR FEATURES:

- KEYLESS ENTRY
- TREATED WOOD DECK
- ASPHALT DRIVEWAY
- WALKING TRAILS



MAIN FLOOR

257 RENAISSANCE DR, ST. THOMAS



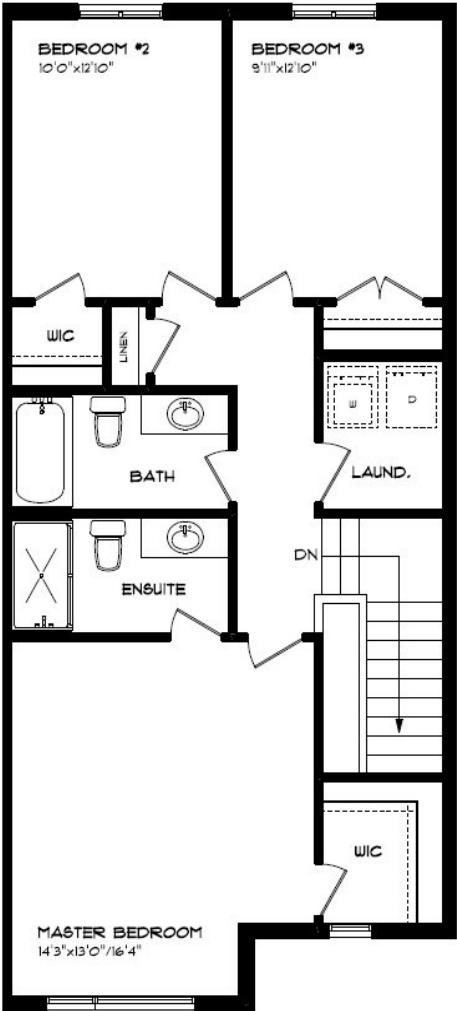
MAIN FLOOR:
APPROX 756 SQFT

- SINGLE CAR GARAGE
- KITCHEN ISLAND
- VINYL PLANK FLOORING
- QUARTZ COUNTERTOPS



SECOND FLOOR

257 RENAISSANCE DR, ST. THOMAS



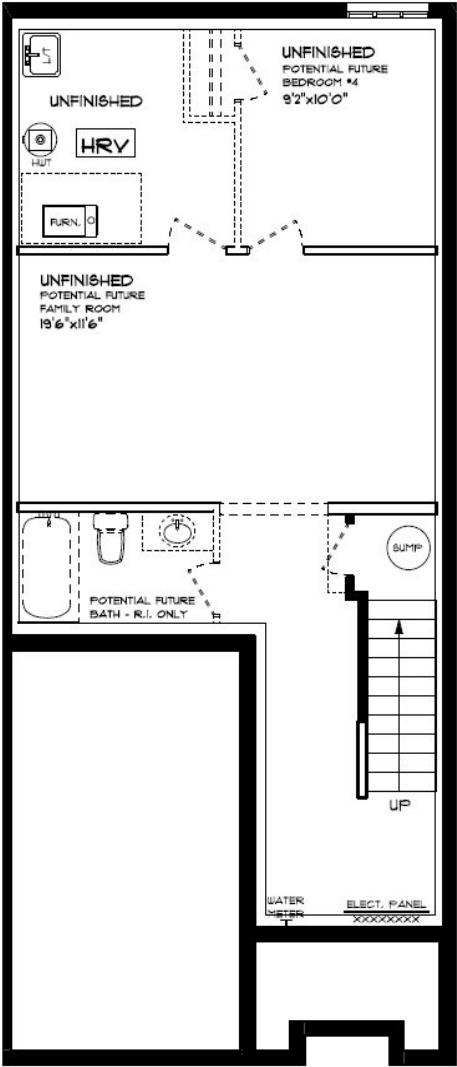
SECOND FLOOR LAUNDRY
PROFESSIONALLY DESIGNED
CARPET FLOORING
VINYL PLANK FLOORING
WALK-IN CLOSET

SECOND FLOOR:
APPROX 868 SQFT



BASEMENT

257 RENAISSANCE DR, ST. THOMAS



BASEMENT:
UNFINISHED

AIR CONDITIONING
GAS FURNACE WITH HRV
HUMIDIFIER
NEW HOME WARRANTY

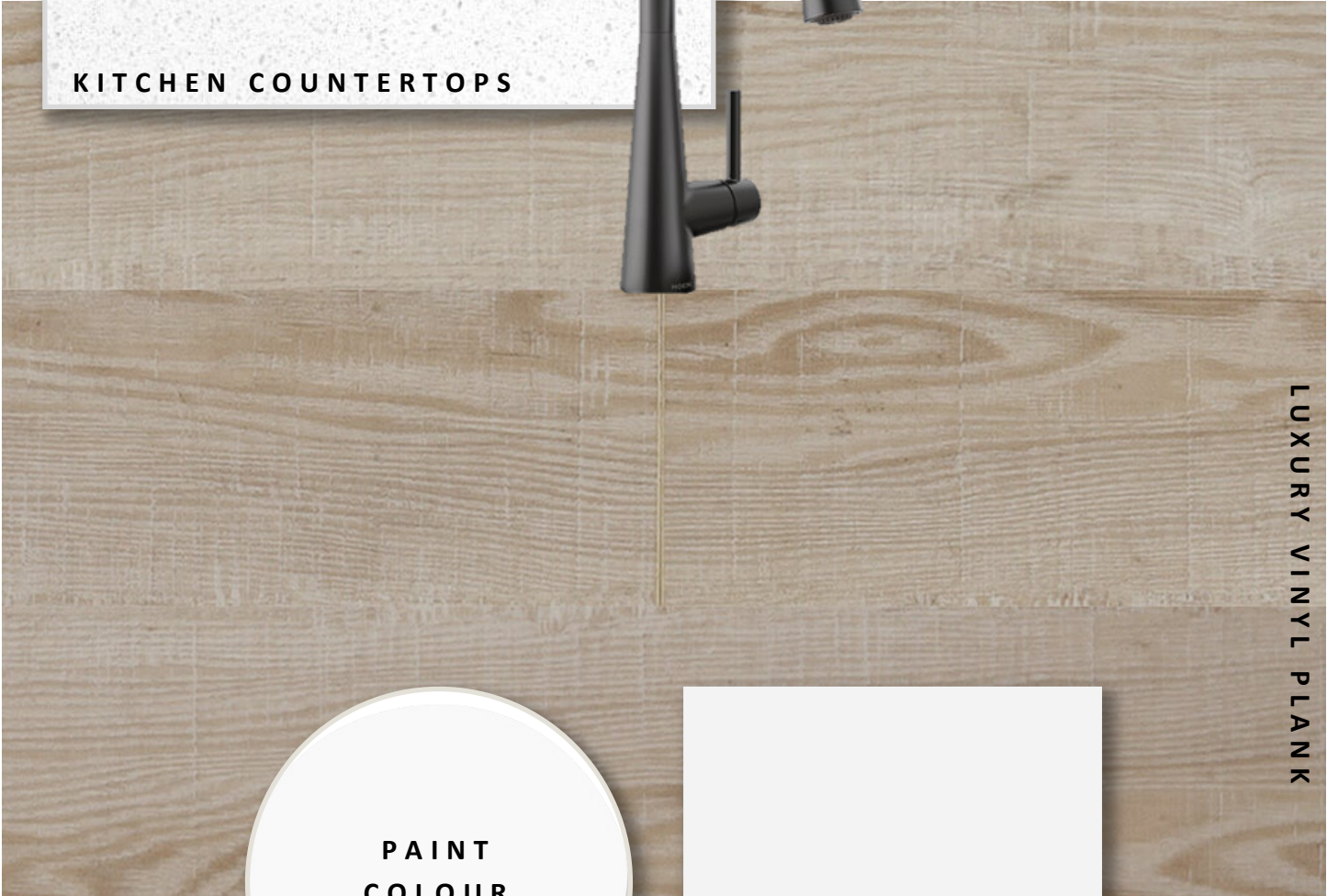
HAYHOE™
— HOMES —

INTERIOR FINISHES

257 RENAISSANCE DR



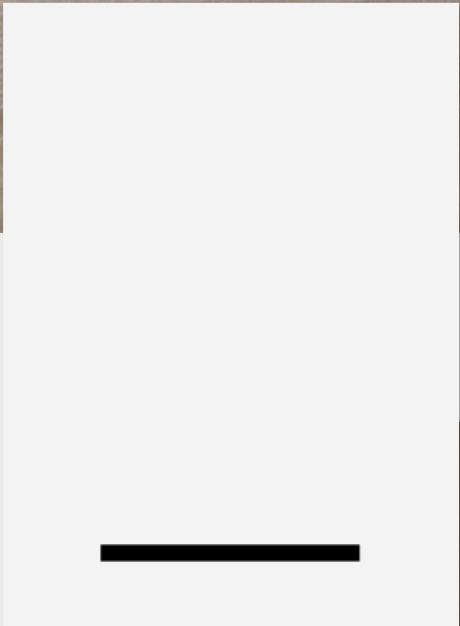
KITCHEN COUNTERTOPS



LUXURY VINYL PLANK



PAINT
COLOUR



KITCHEN
CABINETRY



ISLAND PENDANTS



FOYER
FIXTURE



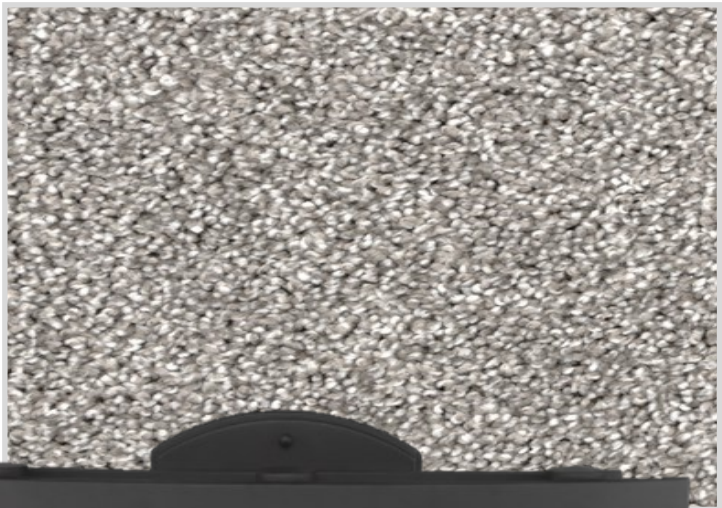
INTERIOR FINISHES

257 RENAISSANCE DR

INTERIOR DOOR STYLE

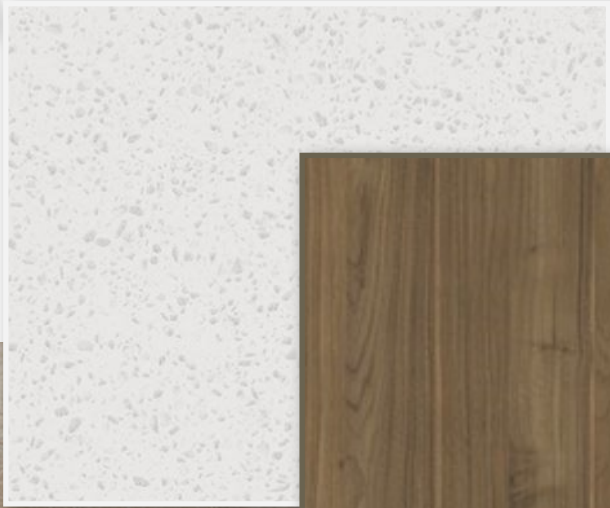


CARPET



BATHROOM
COUNTERTOP

BATHROOM
CABINETRY



LUXURY VINYL PLANK

