



NORTHPOINT

FRONT ELEVATION 'A'

HAYHOETM
—HOMES—

This plan is the property of Hayhoe Homes and any reproduction of this plan, its concepts or ideas, is strictly prohibited. Plans and specifications are approximate and are subject to change without notice. Finished area and room dimensions will change depending on front elevation selection. E.#0.E. Copyright 2019.

CREATED FEB. 2020



NORTHPOINT

FRONT ELEVATION 'B'

HAYHOE™
—HOMES—

This plan is the property of Hayhoe Homes and any reproduction of this plan, its concepts or ideas, is strictly prohibited. Plans and specifications are approximate and are subject to change without notice. Finished area and room dimensions will change depending on front elevation selection. E.A.O.E. Copyright 2019.

CREATED FEB. 2020



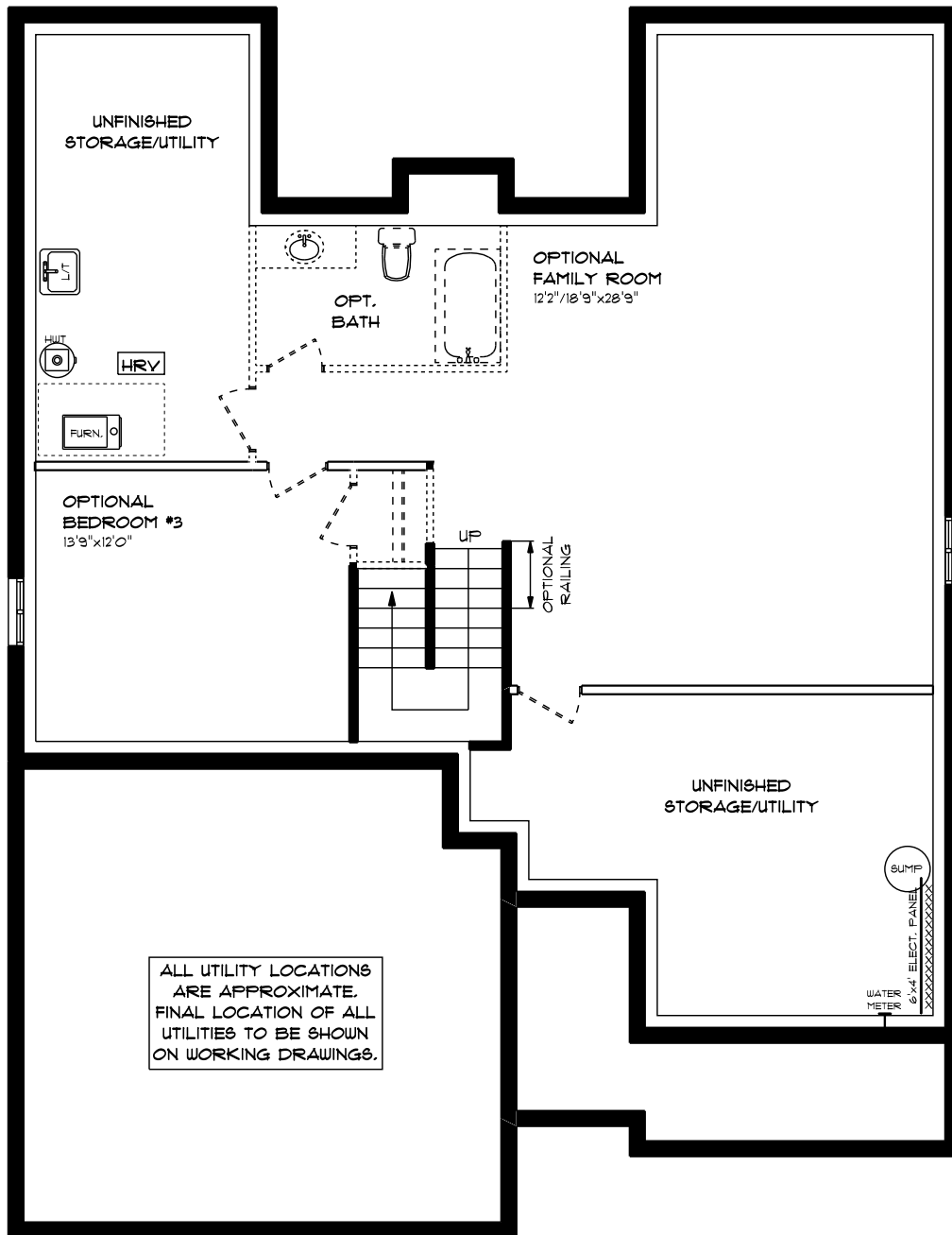
NORTHPOINT

FRONT ELEVATION 'C'

HAYHOE™
-HOMES-

This plan is the property of Hayhoe Homes and any reproduction of this plan, its concepts or ideas, is strictly prohibited. Plans and specifications are approximate and are subject to change without notice. Finished area and room dimensions will change depending on front elevation selection. E.40.E. Copyright 2019.

CREATED FEB. 2020



NORTHPOINT

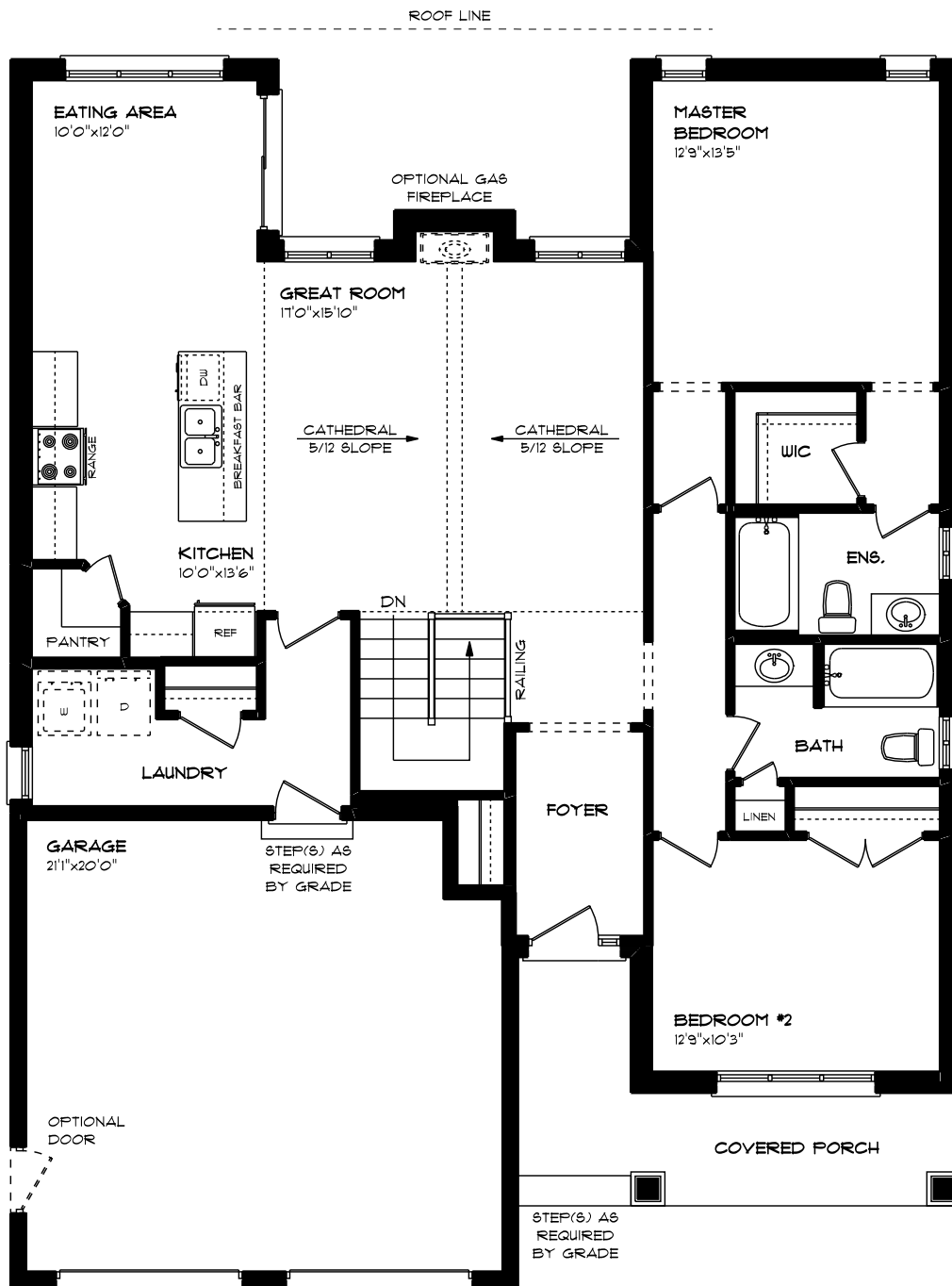
LOWER LEVEL PLAN 'A'

UNFINISHED

This plan is the property of Hayhoe Homes and any reproduction of this plan, its concepts or ideas, is strictly prohibited. Plans and specifications are approximate and are subject to change without notice. Finished area and room dimensions will change depending on front elevation selection. E.40.E. Copyright 2019.

CREATED FEB. 2020

HAYHOE™
HOMES



NORTHPOINT

HAYHOE™
-HOMES-

MAIN FLOOR PLAN 'A'

APPROX. 1,501 SQ. FT.

This plan is the property of Hayhoe Homes and any reproduction of this plan, its concepts or ideas, is strictly prohibited. Plans and specifications are approximate and are subject to change without notice. Finished area and room dimensions will change depending on front elevation selection. E.A.O.E. Copyright 2020

CREATED FEB. 2020
REVISED MAY 6, 2020