

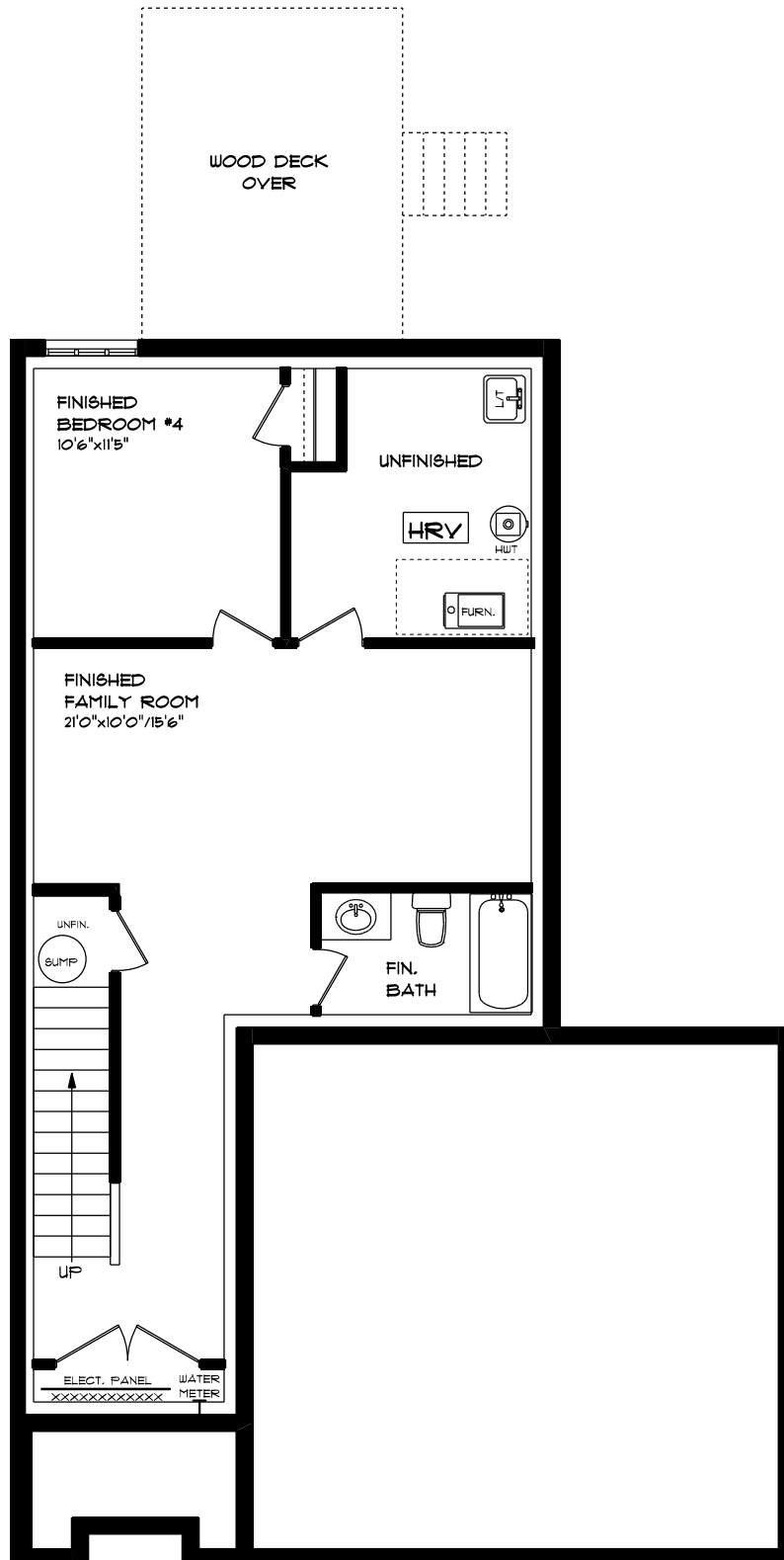


UNIT #1  
MUN. #1 - #49 ROYAL DORNOCH DRIVE

FRONT ELEVATION  
APPROX. 2,469 SQ. FT. TOTAL

This plan is the property of Hayhoe Homes and any reproduction of this plan, its concepts or ideas, is strictly prohibited. Plans and specifications are approximate and are subject to change without notice. Finished area and room dimensions will change depending on front elevation selection.

E. & O.E.

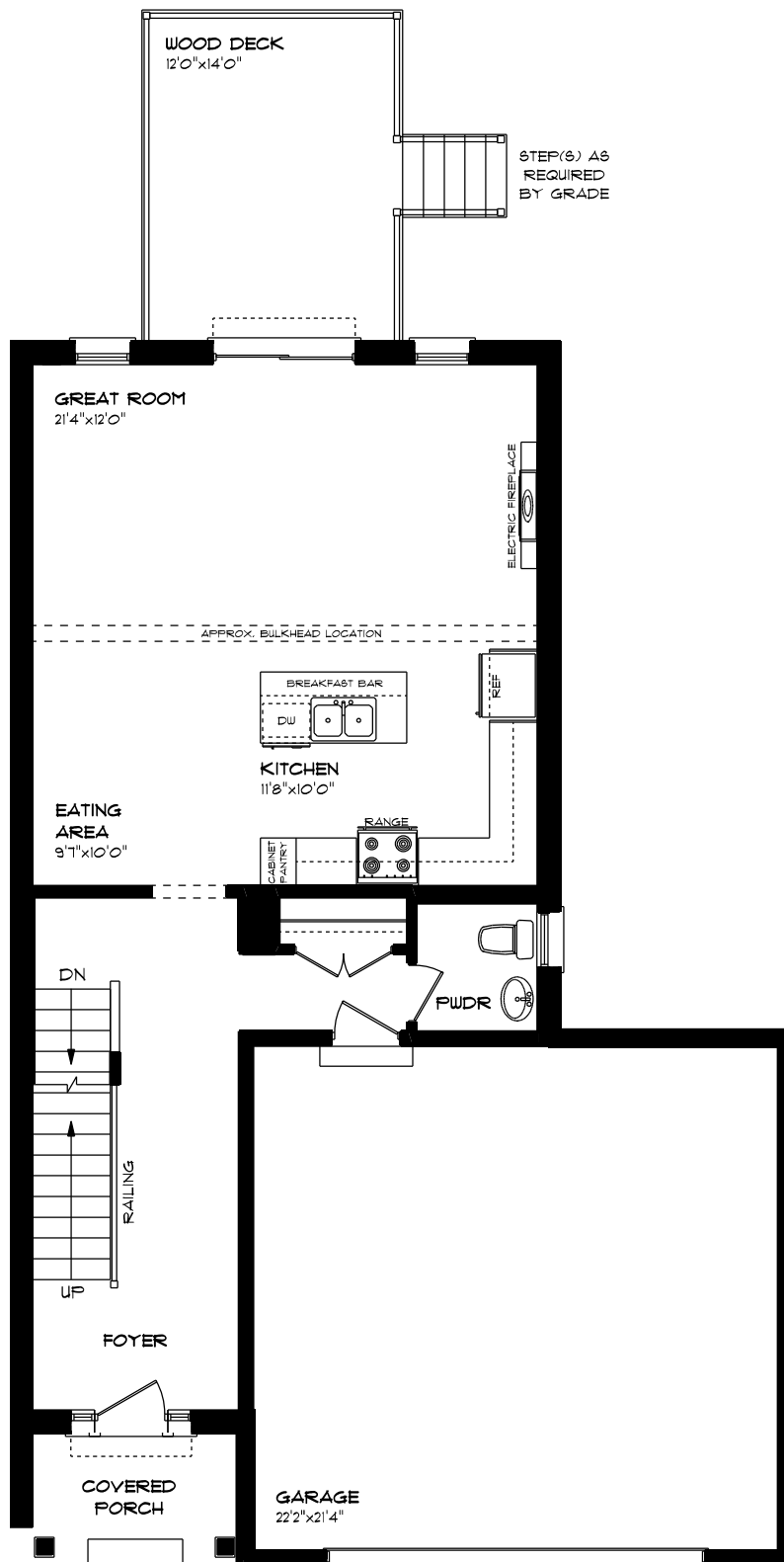


UNIT #1  
MUN. #1 - #49 ROYAL DORNOCH DRIVE

LOWER LEVEL PLAN  
APPROX. 591 SQ. FT.

This plan is the property of Hayhoe Homes and any reproduction of this plan, its concepts or ideas, is strictly prohibited. Plans and specifications are approximate and are subject to change without notice. Finished area and room dimensions will change depending on front elevation selection.

E. & O.E.

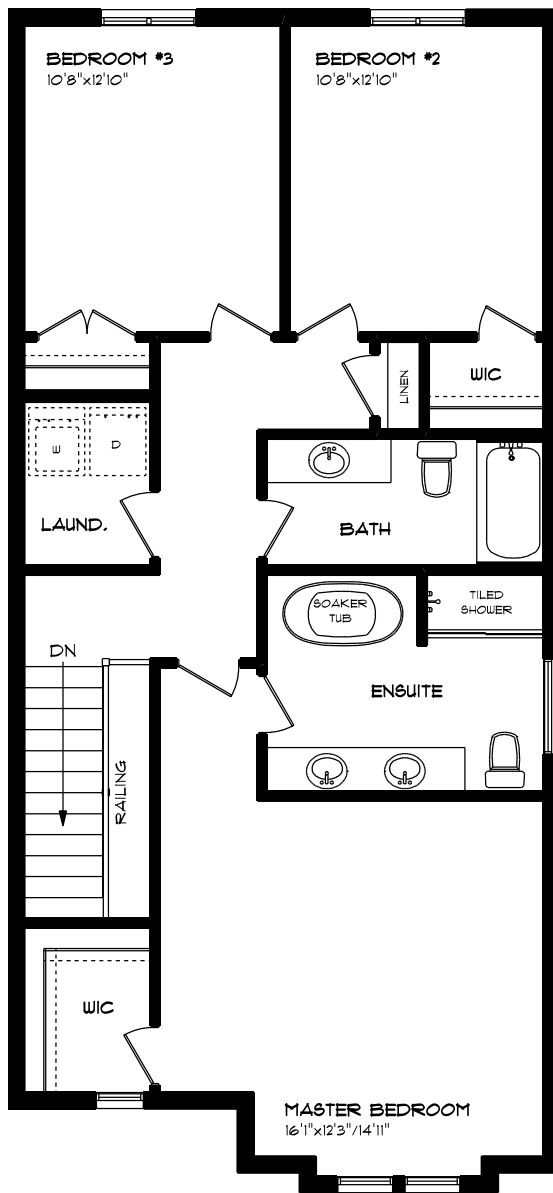


UNIT #1  
MUN. #1 - #49 ROYAL DORNOCH DRIVE

MAIN FLOOR PLAN  
APPROX. 844 SQ. FT.

This plan is the property of Hayhoe Homes and any reproduction of this plan, its concepts or ideas, is strictly prohibited. Plans and specifications are approximate and are subject to change without notice. Finished area and room dimensions will change depending on front elevation selection.

E. & O.E.



UNIT #1  
MUN. #1 - #49 ROYAL DORNOCH DRIVE

SECOND FLOOR PLAN  
APPROX. 1,034 SQ. FT.

This plan is the property of Haynes Homes and any reproduction of this plan, its concepts or ideas, is strictly prohibited. Plans and specifications are approximate and are subject to change without notice. Finished area and room dimensions will change depending on front elevation selection.

E. & O.E.