

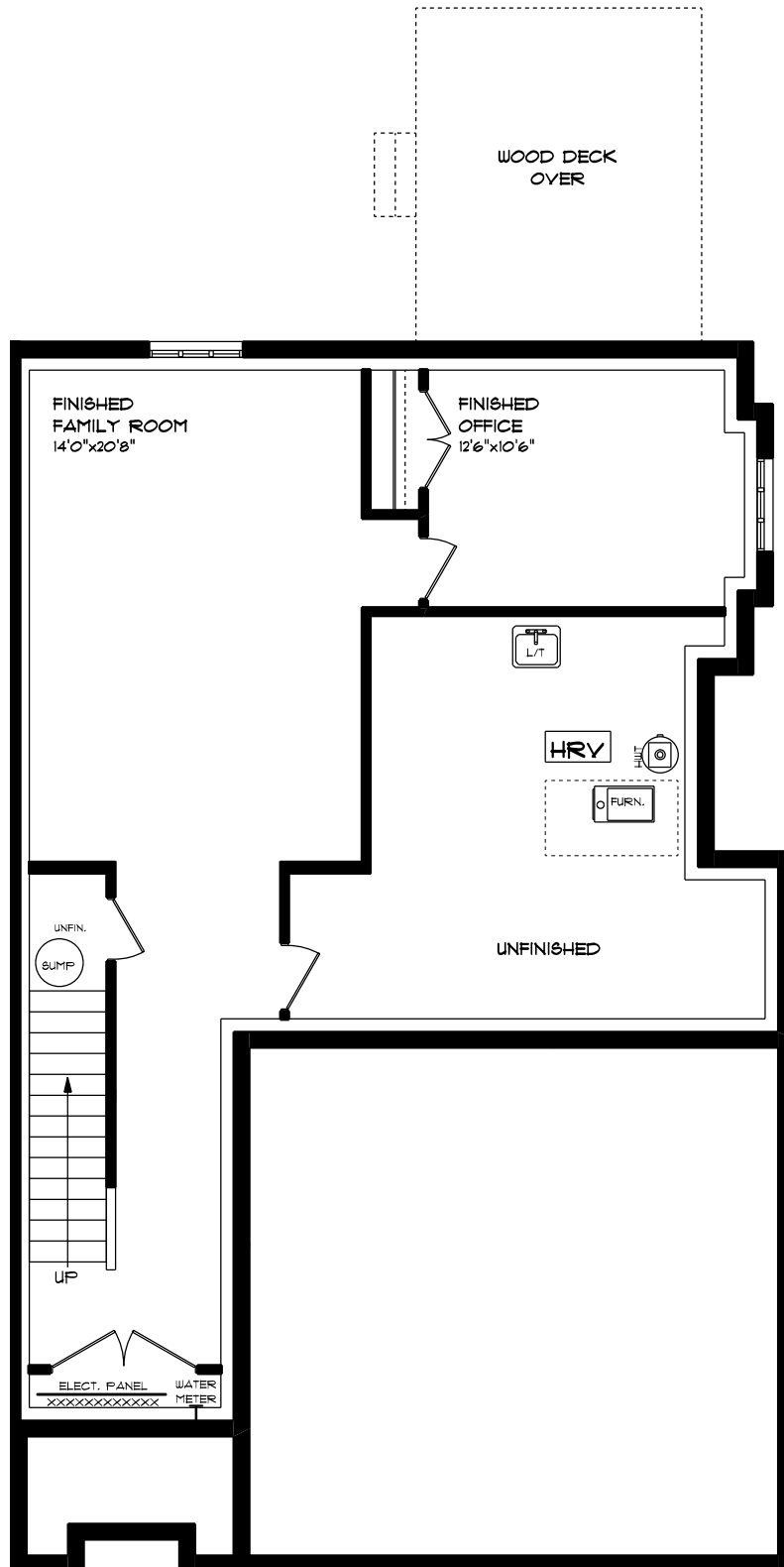


UNIT #35  
MUN. #12 - #49 ROYAL DORNOCH DRIVE

FRONT ELEVATION  
APPROX. 2,954 SQ. FT. TOTAL

This plan is the property of Hayhoe Homes and any reproduction of this plan, its concepts or ideas, is strictly prohibited. Plans and specifications are approximate and are subject to change without notice. Finished area and room dimensions will change depending on front elevation selection.

E. & O.E.

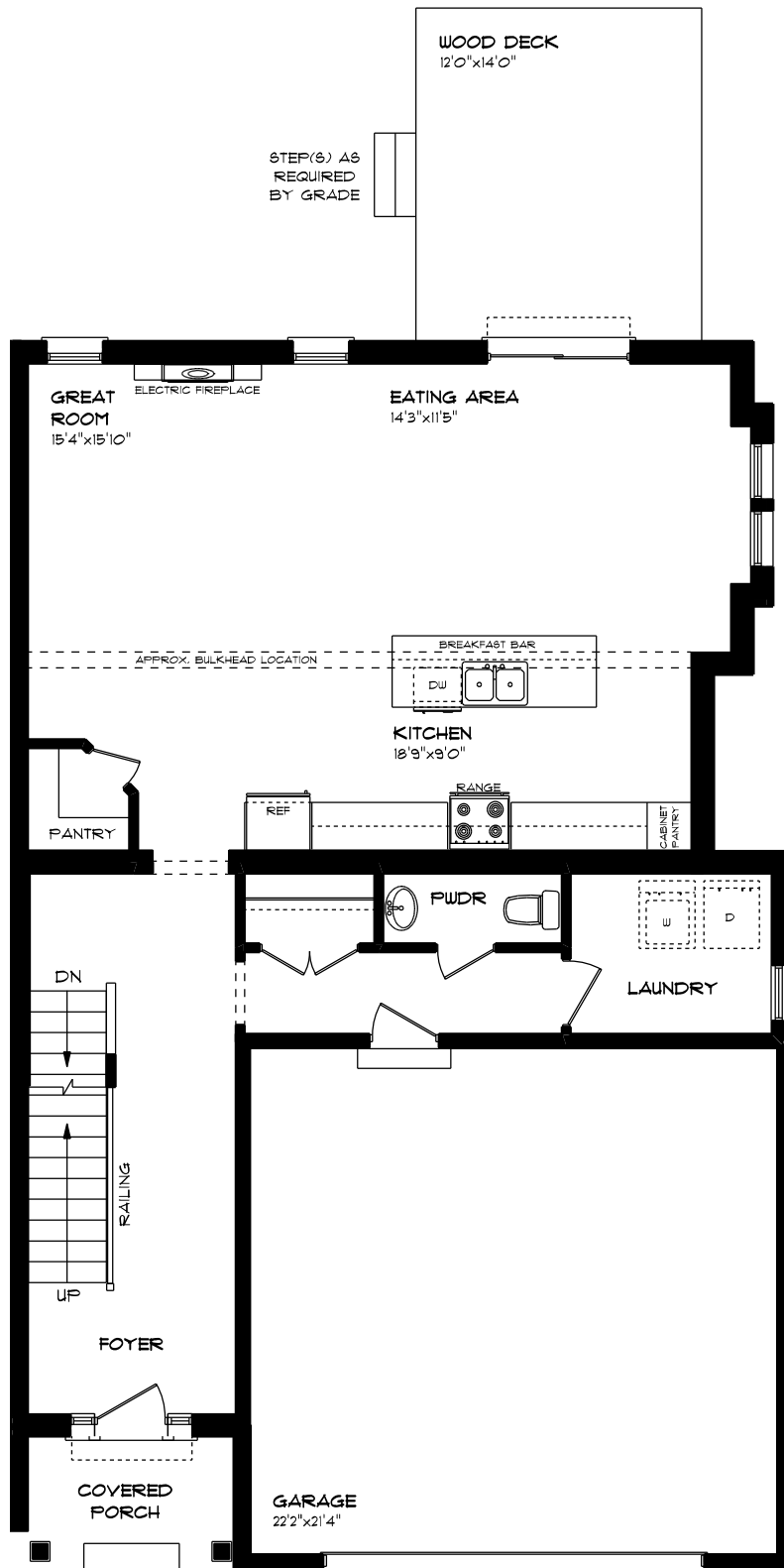


UNIT #35  
MUN. #12 - #49 ROYAL DORNOCH DRIVE

LOWER LEVEL PLAN  
APPROX. 644 SQ. FT.

This plan is the property of Hayhoe Homes and any reproduction of this plan, its concepts or ideas, is strictly prohibited. Plans and specifications are approximate and are subject to change without notice. Finished area and room dimensions will change depending on front elevation selection.

E. & O.E.

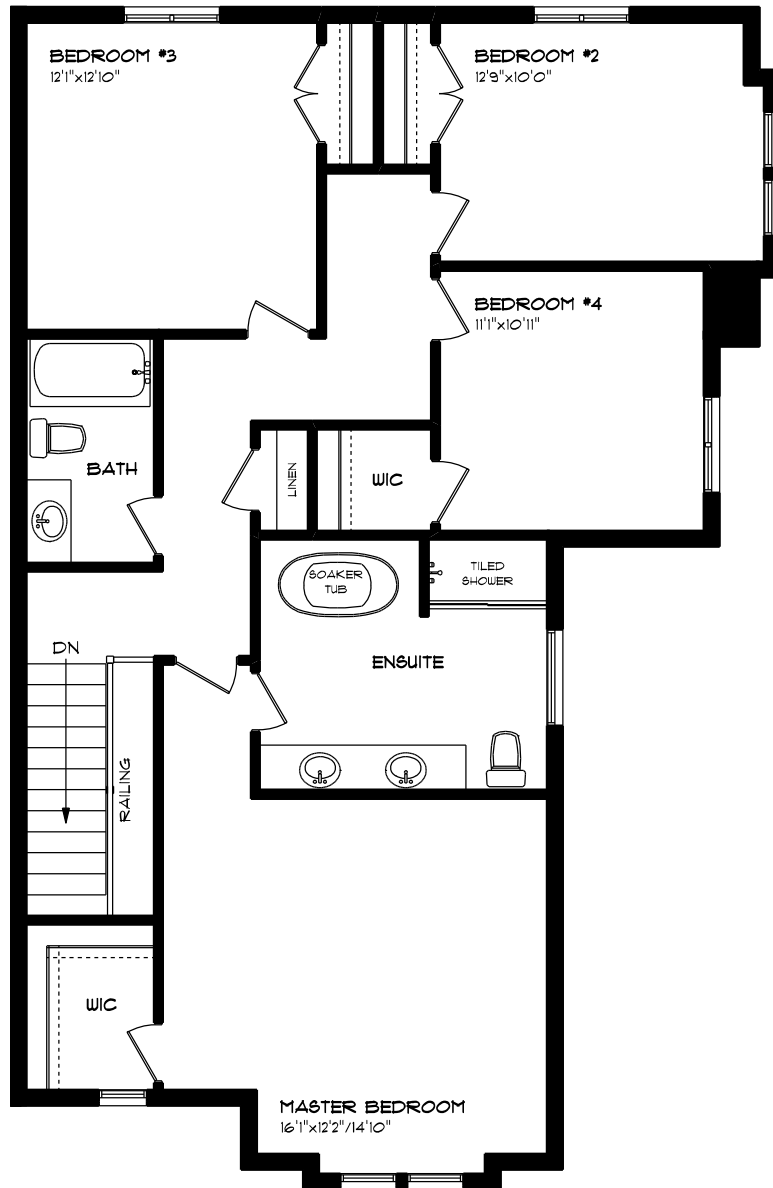


UNIT #35  
MUN. #12 - #49 ROYAL DORNOCH DRIVE

MAIN FLOOR PLAN  
APPROX. 1,091 SQ. FT.

This plan is the property of Mayhew Homes and any reproduction of this plan, its concepts or ideas, is strictly prohibited. Plans and specifications are approximate and are subject to change without notice. Finished area and room dimensions will change depending on front elevation selection.

E. & O.E.



UNIT #35  
MUN. #12 - #49 ROYAL DORNOCH DRIVE

# SECOND FLOOR PLAN APPROX. 1,213 SQ. FT.

This plan is the property of Hayhoe Homes and any reproduction of this plan, its concepts or ideas, is strictly prohibited. Plans and specifications are approximate and are subject to change without notice. Finished area and room dimensions will change depending on front elevation selection.

E. & O.E.