



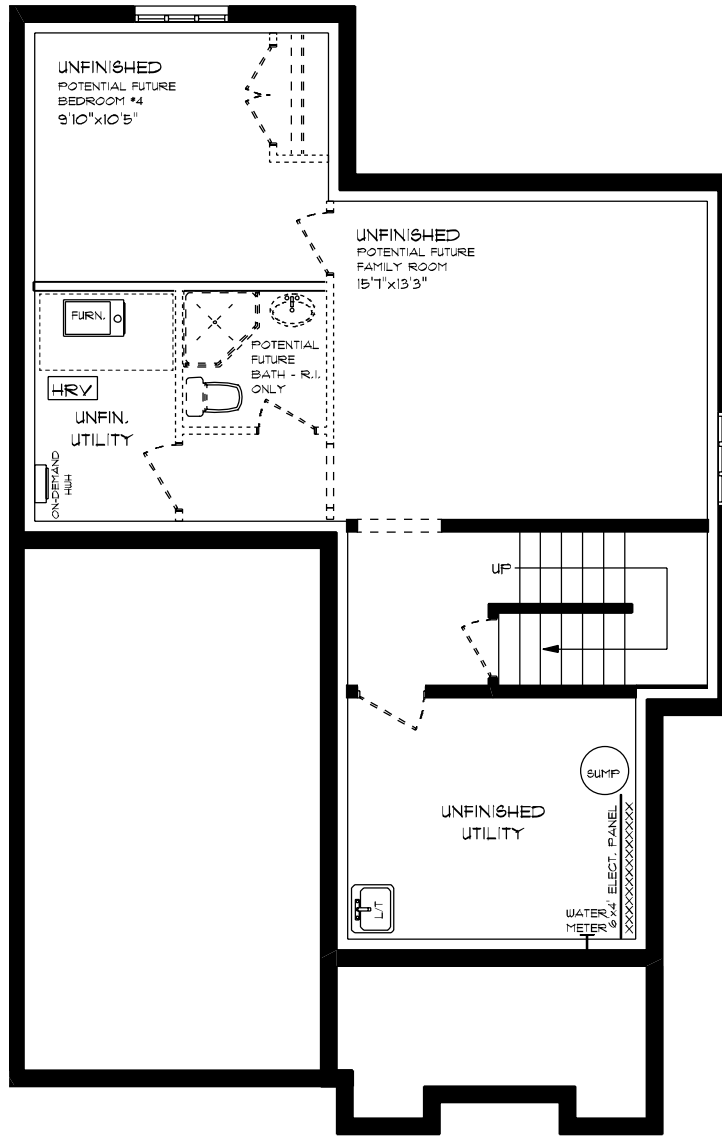
LOCKSHIRE

HAYHOETM
-HOMES-

ESSENTIAL SPECS
LOT 30B (*9) HORIZON COURT
FRONT ELEVATION
9' MAIN FLOOR CEILING\$
APPROX. 1,781 SQ. FT. TOTAL

This plan is the property of Hayhoe Homes and any reproduction of this plan, its concepts or ideas, is strictly prohibited. Plans and specifications are approximate and are subject to change without notice. Finished area and room dimensions will change depending on front elevation selection. E.10.E. 2024

CREATED NOV. 2024



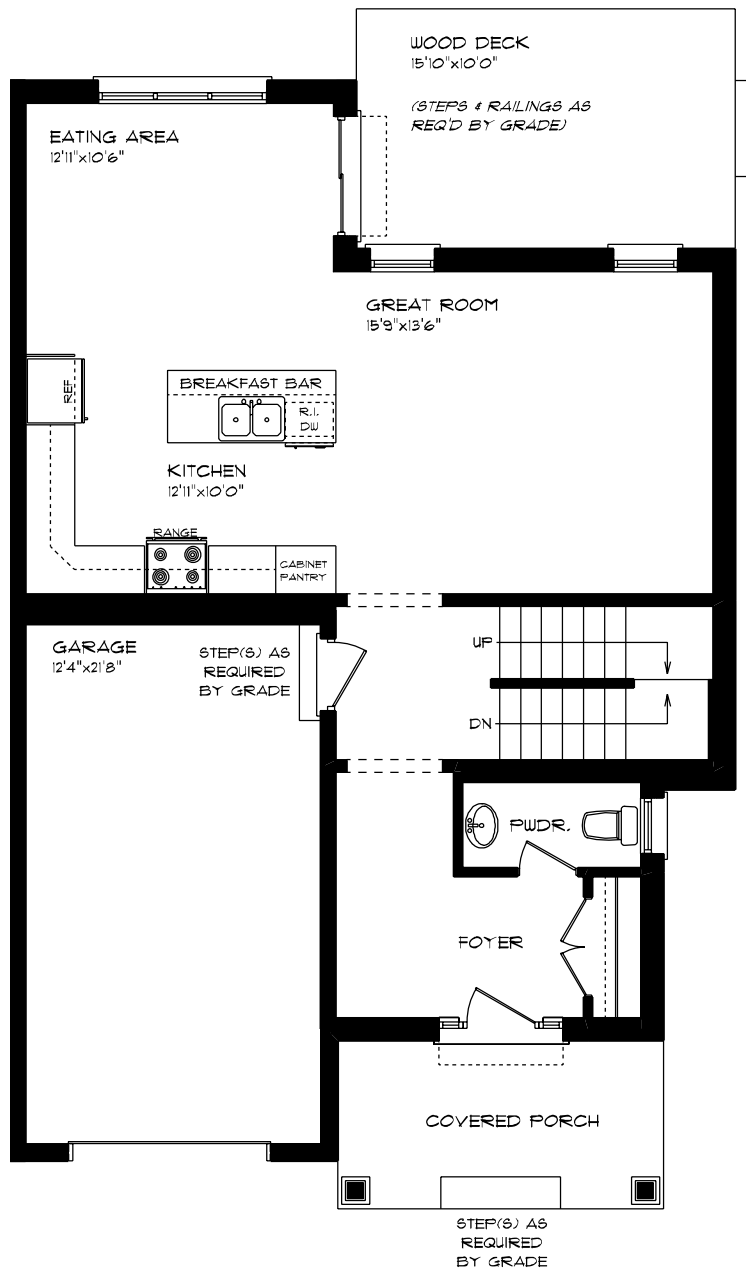
LOCKSHIRE

HAYHOE™
HOMES

ESSENTIAL SPECS
LOT 30B (#9) HORIZON COURT
LOWER LEVEL PLAN
0 SQ. FT.

This plan is the property of Hayhoe Homes and any reproduction of this plan, its concepts or ideas, is strictly prohibited. Plans and specifications are approximate and are subject to change without notice. Finished area and room dimensions will change depending on front elevation selection. E40.E. 2024

CREATED NOV. 2024



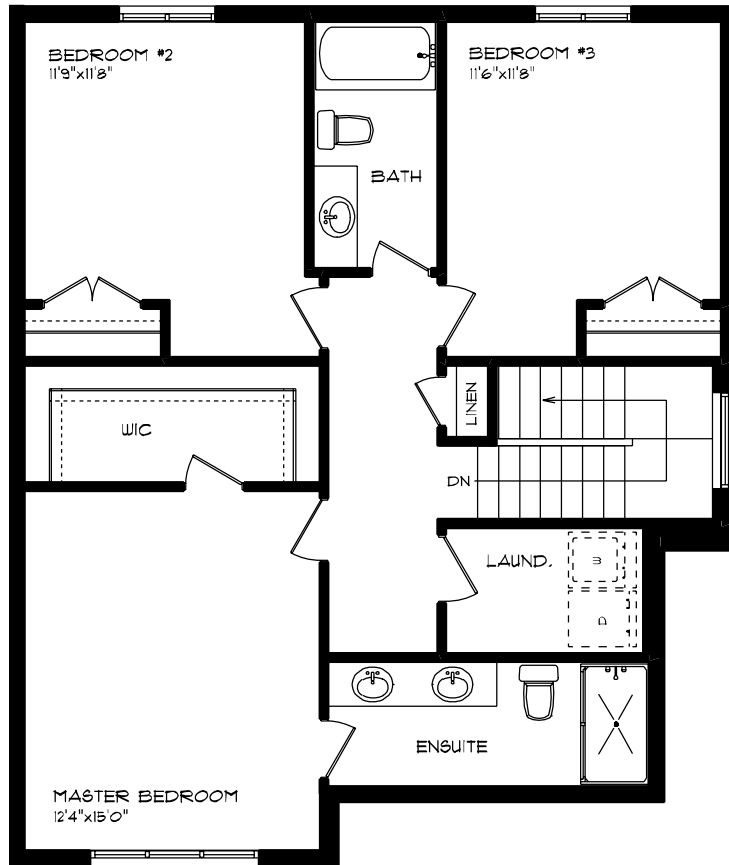
LOCKSHIRE

HAYHOE™
HOMES

ESSENTIAL SPECS
LOT 30B (#9) HORIZON COURT
MAIN FLOOR PLAN
9' MAIN FLOOR CEILING
APPROX. 838 SQ. FT.

This plan is the property of Hayhoe Homes and any reproduction of this plan, its concepts or ideas, is strictly prohibited. Plans and specifications are approximate and are subject to change without notice. Finished area and room dimensions will change depending on front elevation selection. E40.E. 2024

CREATED NOV. 2024



LOCKSHIRE

HAYHOE™
HOMES

ESSENTIAL SPECS
LOT 30B (#9) HORIZON COURT
SECOND FLOOR PLAN
APPROX. 943 SQ. FT.

This plan is the property of Hayhoe Homes and any reproduction of this plan, its concepts or ideas, is strictly prohibited. Plans and specifications are approximate and are subject to change without notice. Finished area and room dimensions will change depending on front elevation selection. E40.E. 2024

CREATED NOV. 2024