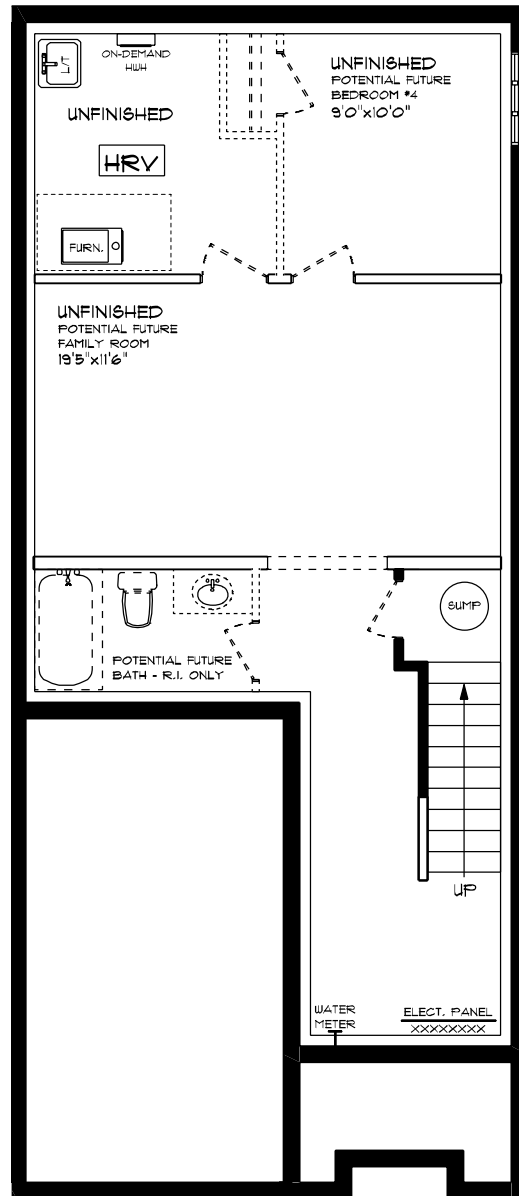




SHELTON (ESSENTIAL SPECS)
 LOT 6F (*105) WILLOW DRIVE
 FRONT ELEVATION
 8' MAIN FLOOR CEILING
 APPROX. 1,668 SQ. FT.

This plan is the property of Haysos Homes and any reproduction of this plan, its concepts or ideas, is strictly prohibited. *Plans and specifications are approximate and are subject to change without notice. Finished area and room dimensions will change depending on front elevation selection. E.A.O.E. 2024
 CREATED MAR. 2024

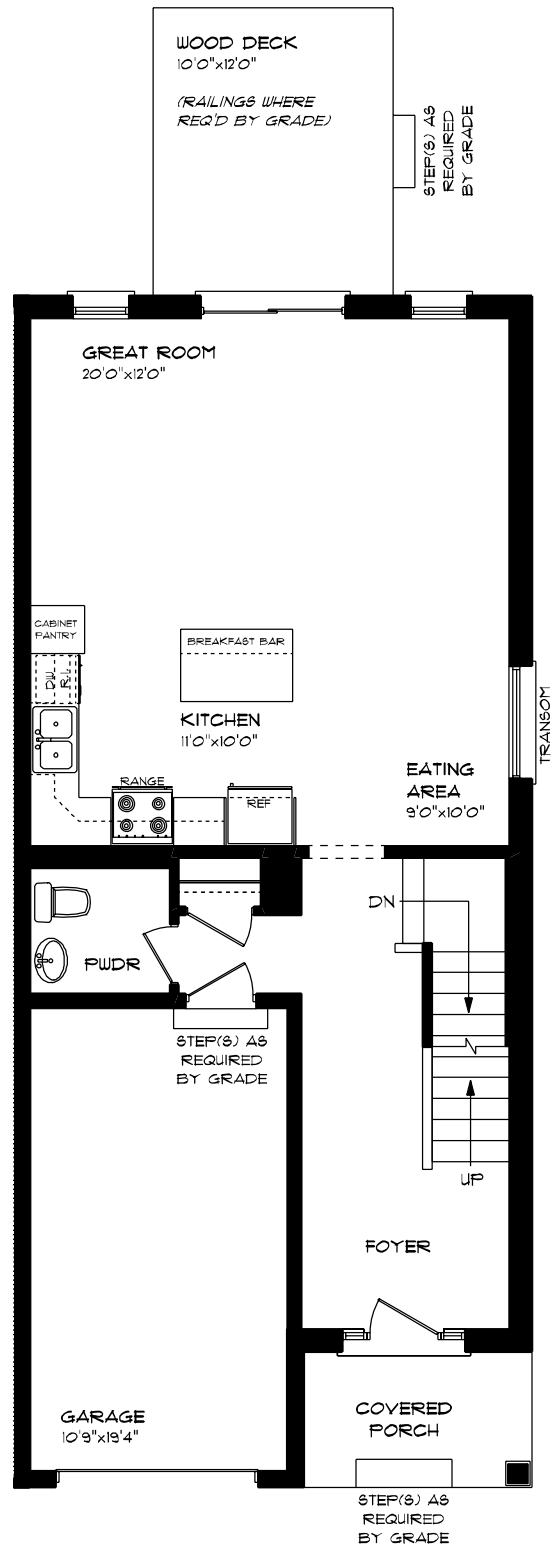


SHELTON (ESSENTIAL SPECS)
 LOT 6F (#105) WILLOW DRIVE
 LOWER LEVEL PLAN

UNFINISHED

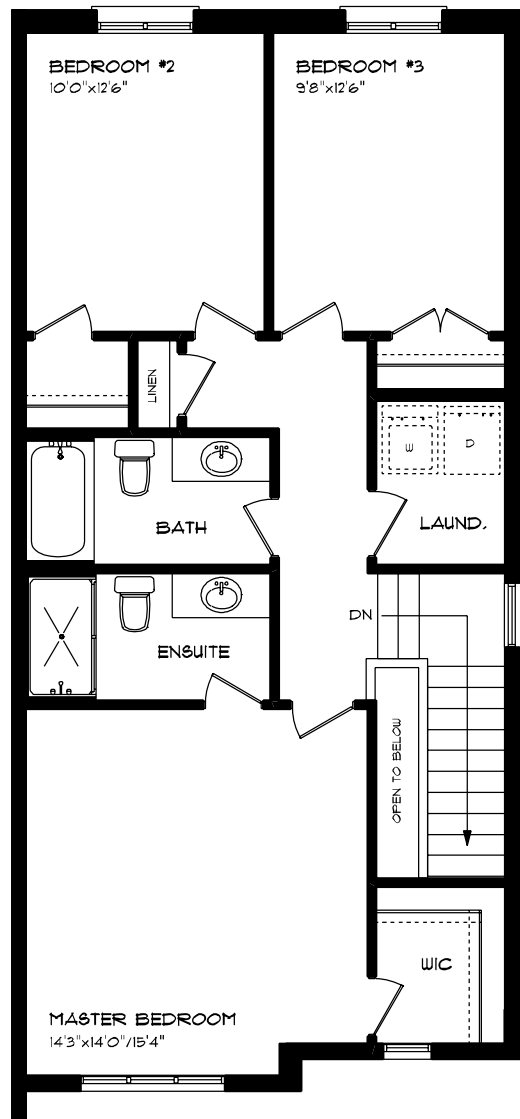
This plan is the property of Haysco Homes and any reproduction of this plan, its concepts or ideas, is strictly prohibited. Plans and specifications are approximate and are subject to change without notice. Finished area and room dimensions will change depending on front elevation selection. E&O.E. 2024

CREATED MAR. 2024



SHELTON (ESSENTIAL SPECS)
 LOT 6F (#105) WILLOW DRIVE
 MAIN FLOOR PLAN
 8' MAIN FLOOR CEILING
 APPROX. 118 SQ. FT.

This plan is the property of Hajos Homes and any reproduction of this plan, its concepts or ideas, is strictly prohibited. Plans and specifications are approximate and are subject to change without notice. Finished area and room dimensions will change depending on front elevation selection. E.A.O.E. 2024
 CREATED: MAR, 2024



**SHELTON (ESSENTIAL SPECS)
LOT 6F (*105) WILLOW DRIVE
SECOND FLOOR PLAN**

APPROX. 890 SQ. FT.

This plan is the property of Hylton Homes and any reproduction of this plan, its concepts or ideas, is strictly prohibited. Plans and specifications are approximate and are subject to change without notice. Finished area and room dimensions will change depending on front elevation selection. E.N.E. 2024

CREATED: MAR. 2024