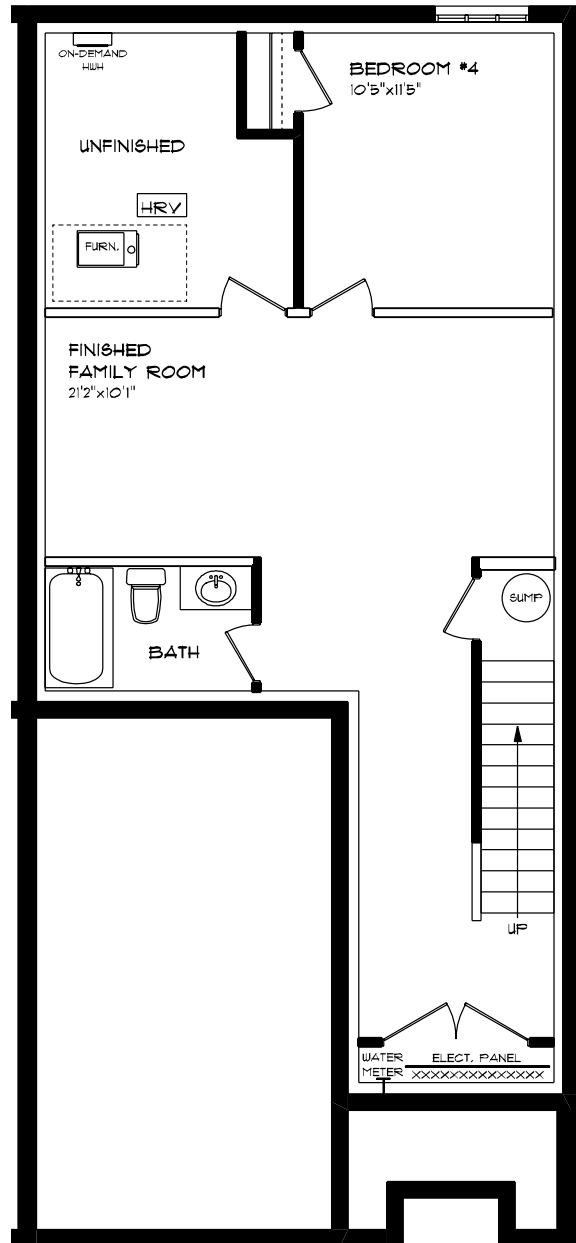




TIFTON (PREMIUM SPECS)
 LOT 10B (#55) WOODCOCK DRIVE
 FRONT ELEVATION
 9' MAIN FLOOR CEILING
 APPROX. 2,443 TOTAL SQ. FT.

This plan is the property of Haghow Homes and any reproduction of this plan, its concepts or ideas, is strictly prohibited. Plans and specifications are approximate and are subject to change without notice. Finished area and room dimensions will change depending on floor elevation selection. E-40-E, 2025

CREATED JUN. 2025

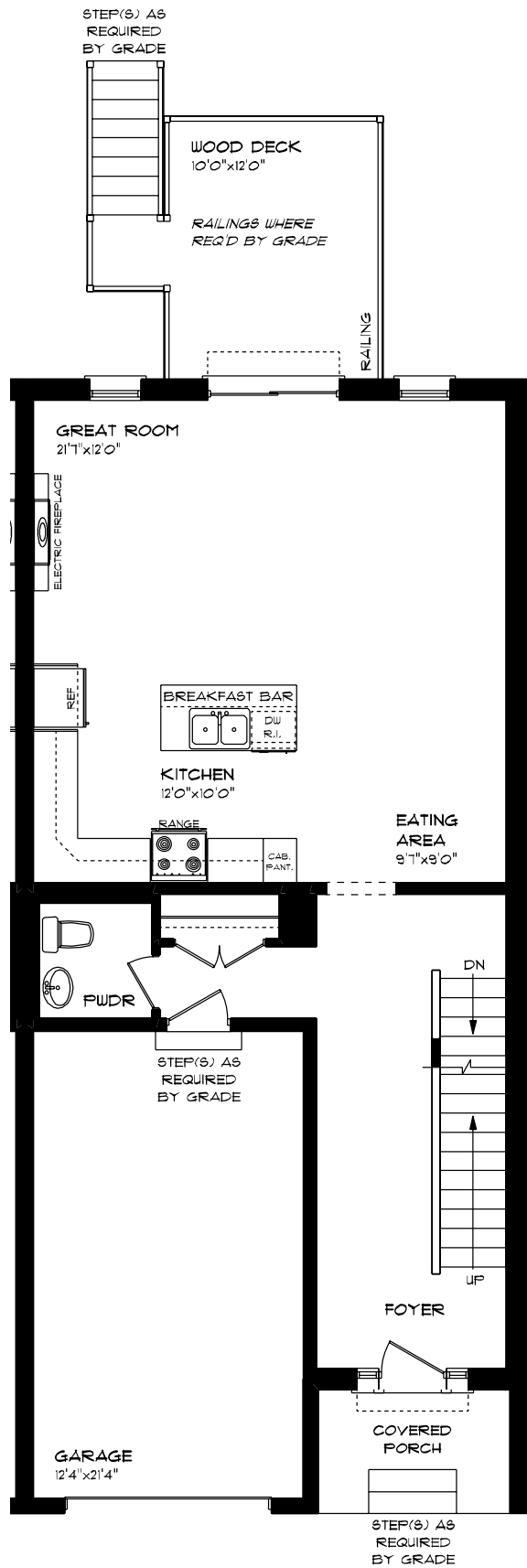


**TIFTON (PREMIUM SPECS)
LOT 10B (#55) WOODCOCK DRIVE
LOWER LEVEL PLAN**

601 SQ. FT.

This plan is the property of Hagios Homes and any reproduction of this plan, its concepts or ideas, is strictly prohibited. Plans and specifications are approximate and are subject to change without notice. Finished area and room dimensions will change depending on front elevation selection. E.A.O.E. 2025

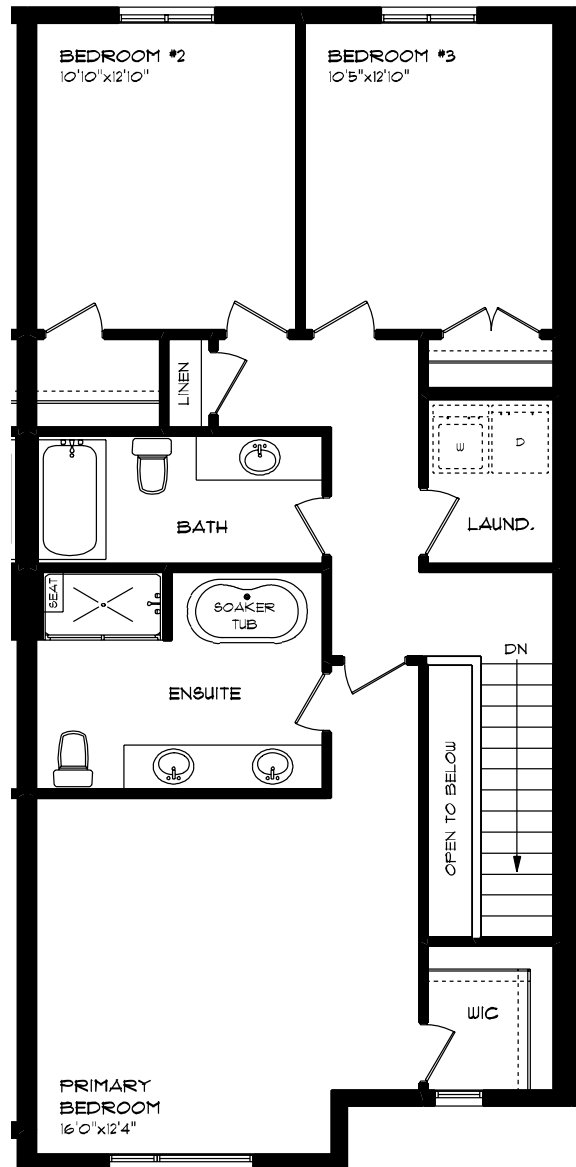
CREATED JUN. 2025



TIFTON (PREMIUM SPECS)
LOT 10B (#55) WOODCOCK DRIVE
MAIN FLOOR PLAN
9' MAIN FLOOR CEILING
APPROX. 836 SQ. FT.

This plan is the property of L-Style Homes and any reproduction of this plan, its concepts or ideas is strictly prohibited. *Line and specifications are approximate and are subject to change without notice. Finished area and room dimensions will change depending on front elevation as shown. E.A.O.E. 2025

CREATED JUN. 2025



TIFTON (PREMIUM SPECS)
 LOT 10B (#55) WOODCOCK DRIVE
 SECOND FLOOR PLAN

APPROX. 1,006 SQ. FT.

This plan is the property of Hughes Homes and any reproduction of this plan, its concepts or ideas, is strictly prohibited. Mine and specification are approximate and are subject to change without notice. Finished area and room dimensions will change depending on front elevation as action, E.A.O.E. 2025
 CREATED JUN. 2025