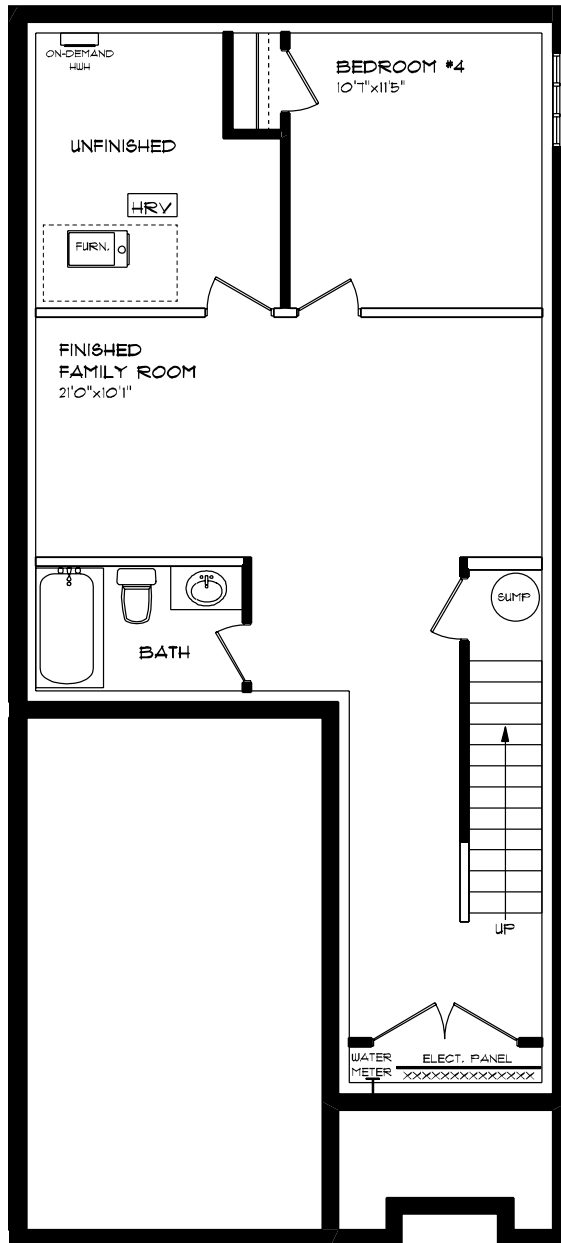




TIFTON (PREMIUM SPECS)
 LOT 10F (#63) WOODCOCK DRIVE
 FRONT ELEVATION
 8' MAIN FLOOR CEILING
 APPROX. 2,451 TOTAL SQ. FT.

This plan is the property of Hagshoe Homes and any reproduction of this plan, its concepts or details, is strictly prohibited. Plans and specifications are approximate and are subject to change without notice. Finished area and room dimensions will change depending on floor elevation selection. E.40.E. 2025

CREATED JUN. 2025

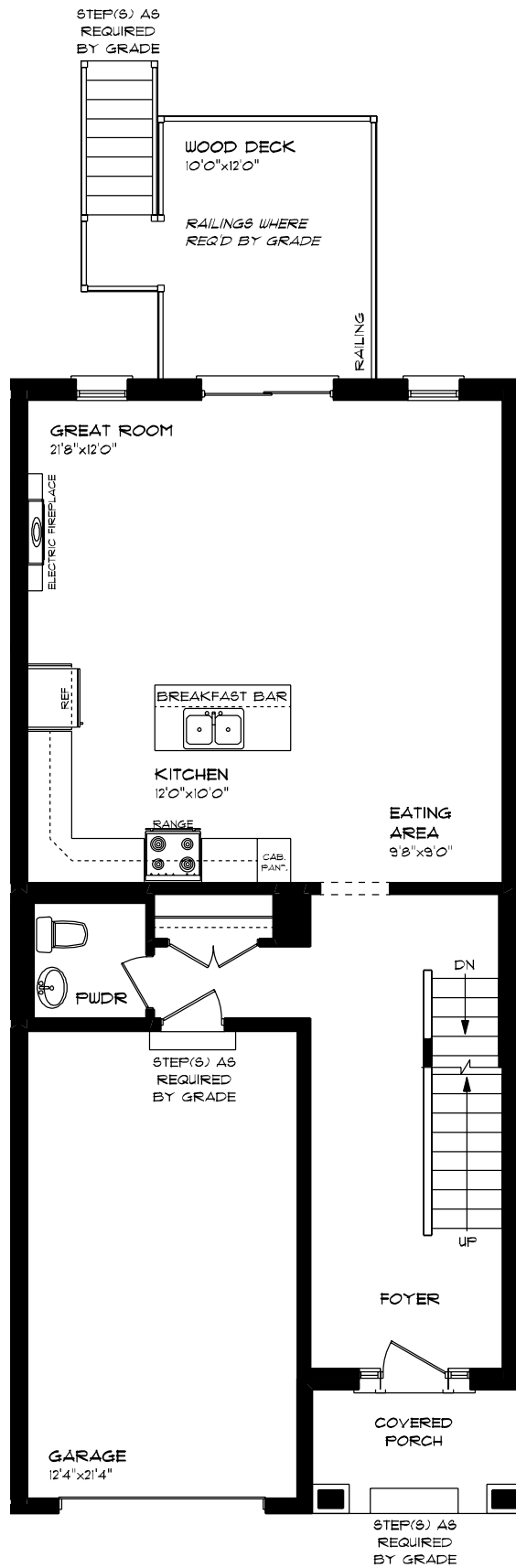


**TIFTON (PREMIUM SPECS)
LOT 10F (#63) WOODCOCK DRIVE
LOWER LEVEL PLAN**

593 SQ. FT.

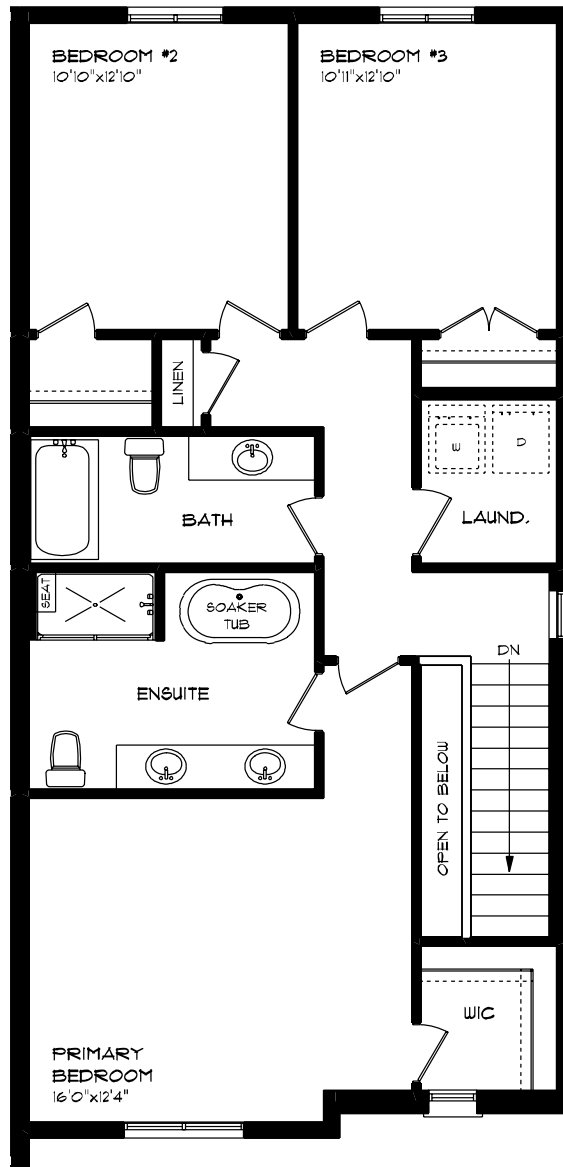
This plan is the property of Hayhoe Homes and any reproduction of this plan, its concepts or ideas, is strictly prohibited. Plans and specifications are approximate and are subject to change without notice. Finished area and room dimensions will change depending on front elevation selection. E.H.O.E. 2025

CREATED JUN. 2025



TIFTON (PREMIUM SPECS)
 LOT 10F (#63) WOODCOCK DRIVE
 MAIN FLOOR PLAN
 8' MAIN FLOOR CEILING
 APPROX. 852 SQ. FT.

This plan is the property of Lighthouse Homes and any reproduction of this plan, its concepts or ideas, is strictly prohibited. Plans and specifications are approximate and are subject to change without notice. Finished area and room dimensions will change depending on front elevation selection. E.A.D.E. 2025
 CREATED JUN. 2025



**TIFTON (PREMIUM SPECS)
LOT 10F (#63) WOODCOCK DRIVE
SECOND FLOOR PLAN**

APPROX. 1,006 SQ. FT.

This plan is the property of Hajos Homes and any reproduction of this plan, its concepts or ideas, is strictly prohibited. Plans and specifications are approximate and are subject to change without notice. Finished area and room dimensions will change depending on front elevation selection. E.A.O.E. 2025

CREATED JUN. 2025