

# T O W N H O M E

## ESSENTIAL FEATURES



# 12 CANARY ST

NORTHCREST TOWNS, TILLSONBURG

## THE DETAILS

PRICE	\$ 575,000
CLOSING DATE	January 5, 2026
LOT NUMBER	101A, PHASE 2
BEDROOMS	4
BATHS	2.5
SQFT	1784
GARAGE	1
MODEL	2 STOREY TOWN

**HAYHOE™**  
— HOMES —



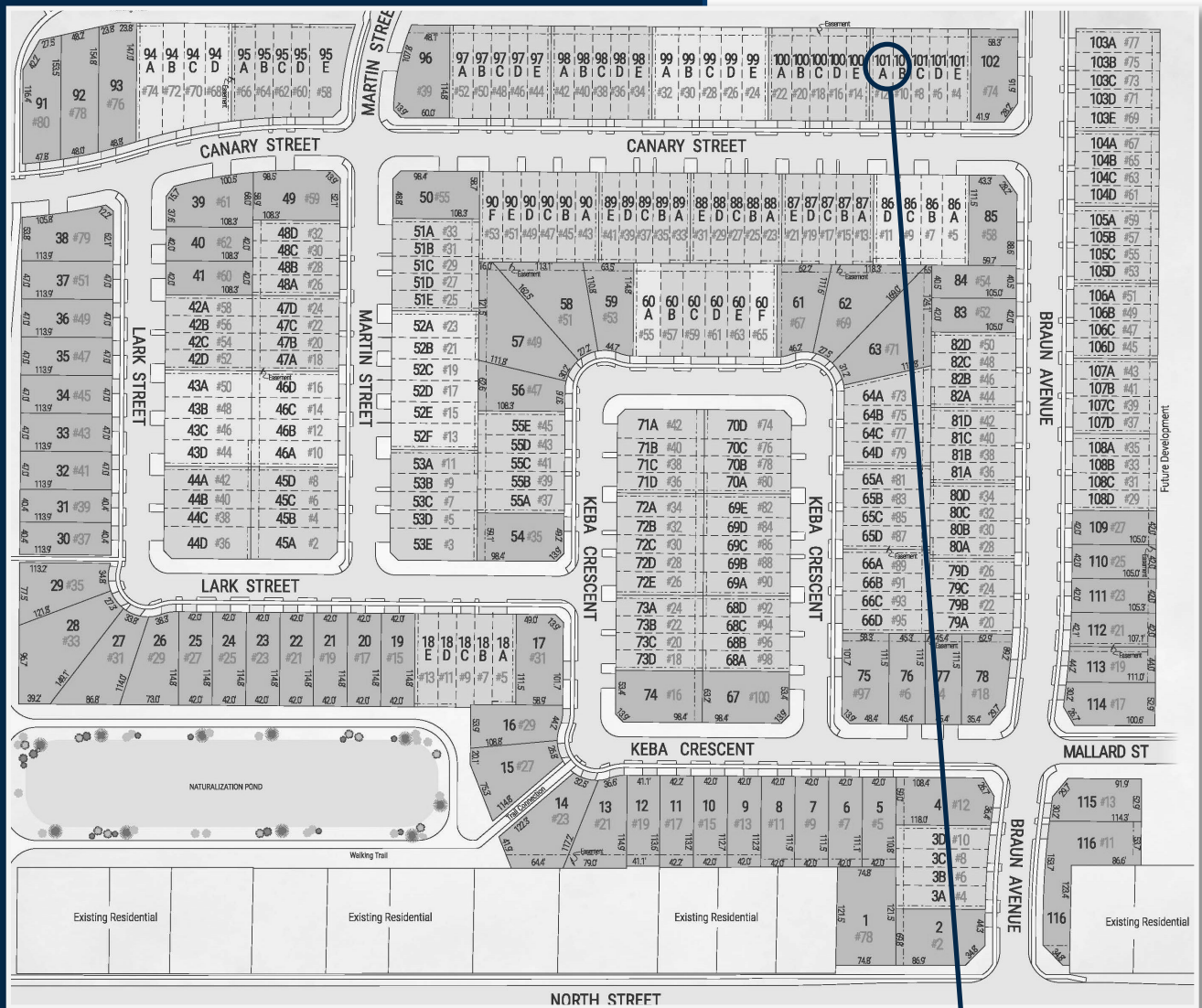
### SALES PROFESSIONAL

LAURA BABCOCK

519.520.0539

[laura.babcock@hayhoehomes.com](mailto:laura.babcock@hayhoehomes.com)

# S I T E P L A N



# 12 CANARY ST

## EXTERIOR FEATURES:

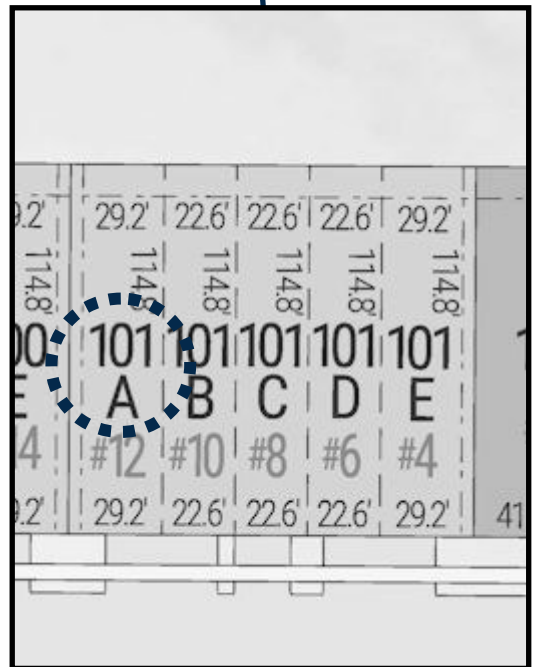
## KEYLESS ENTRY

## TREATED WOOD DECK

## ASPHALT DRIVEWAY

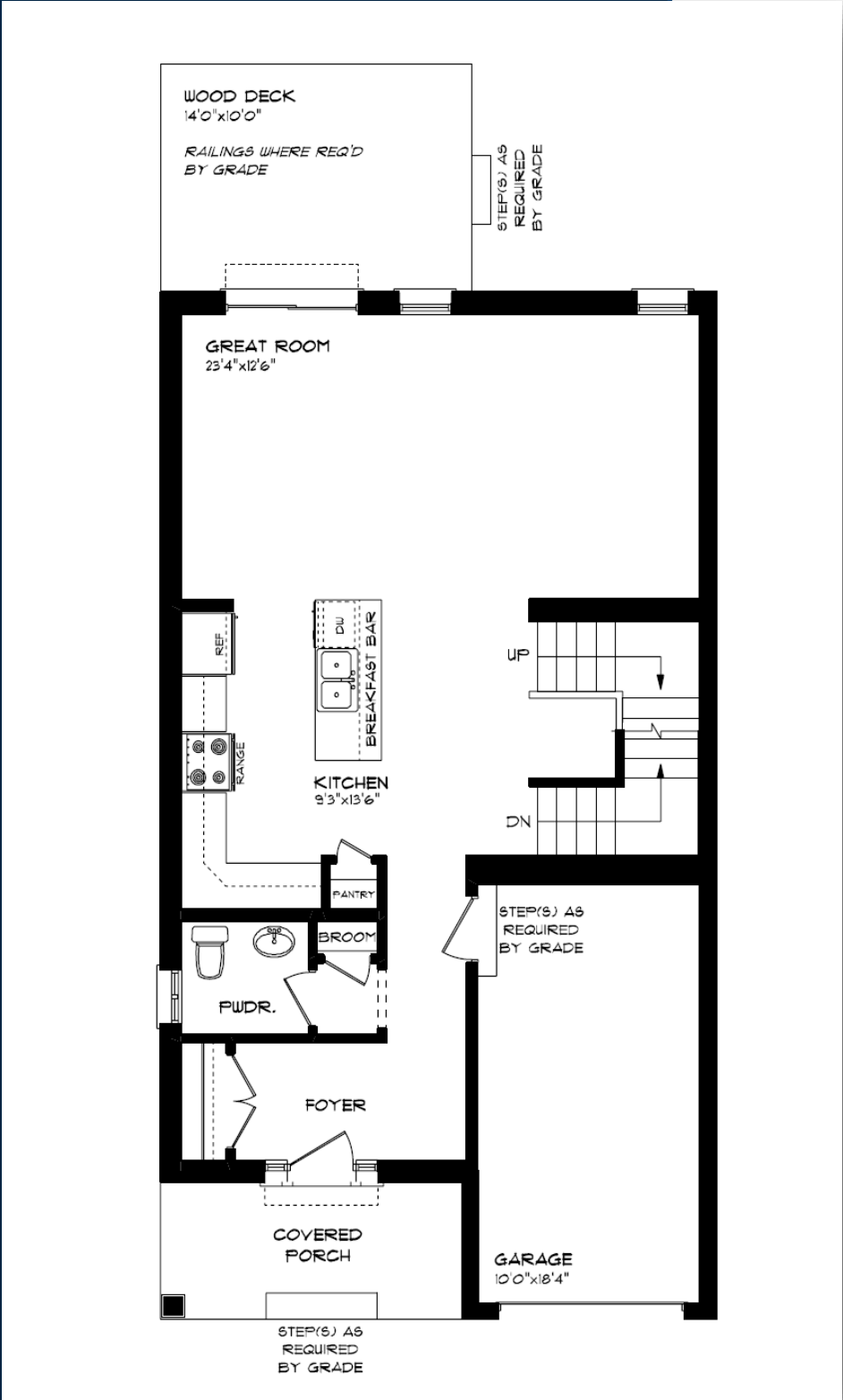
## WALKING TRAILS

**HAYHOE™**  
—•HOMES•—

The logo for Northcrest Towns features the word "NORTHCREST" in a dark blue, sans-serif font. Below it, the word "TOWNS" is written in a gold, sans-serif font. A thick gold horizontal line is positioned between the two words, and a dark blue square is located to the left of the word "TOWNS".

# MAIN FLOOR

12 CANARY ST, TILLSONBURG



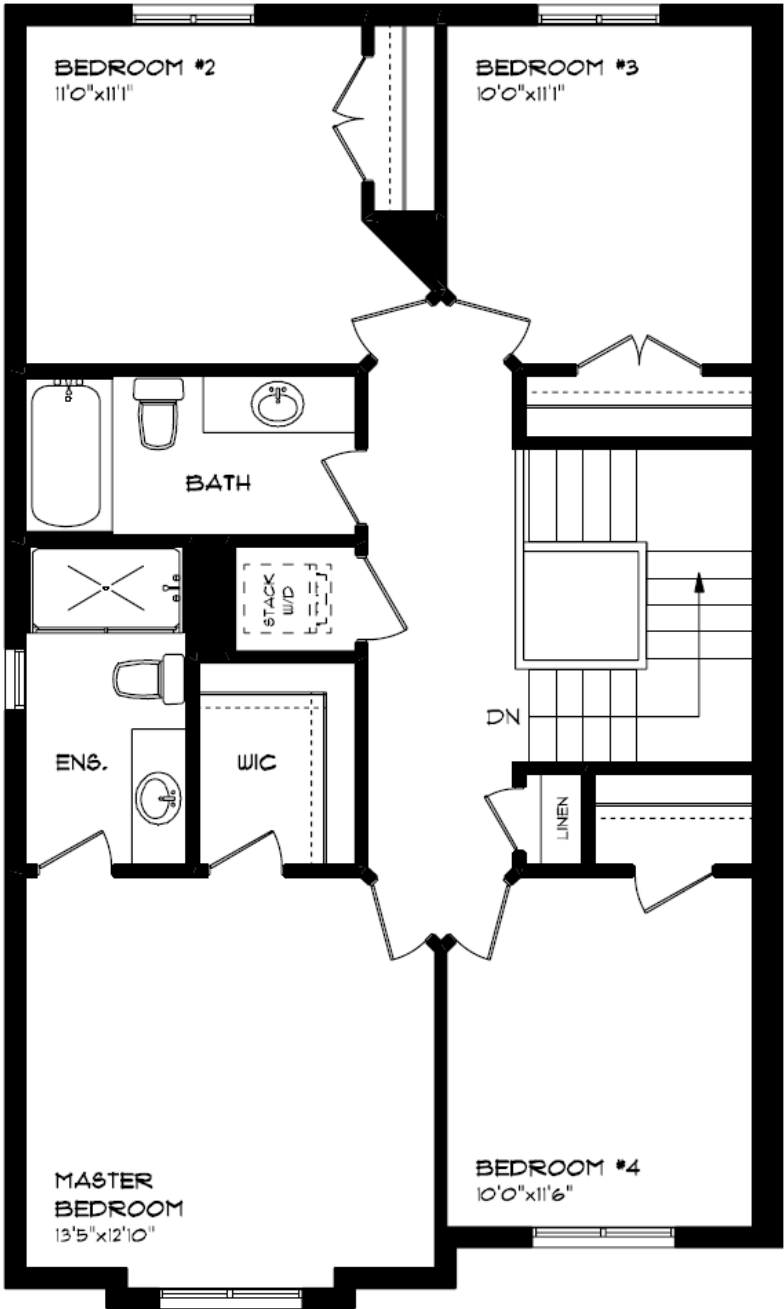
- SINGLE CAR GARAGE
- KITCHEN ISLAND
- VINYL PLANK FLOORING
- QUARTZ COUNTERTOPS
- UNDERMOUNT SINK

MAIN FLOOR:  
APPROX 830 SQFT



# SECOND FLOOR

12 CANARY ST, TILLSONBURG



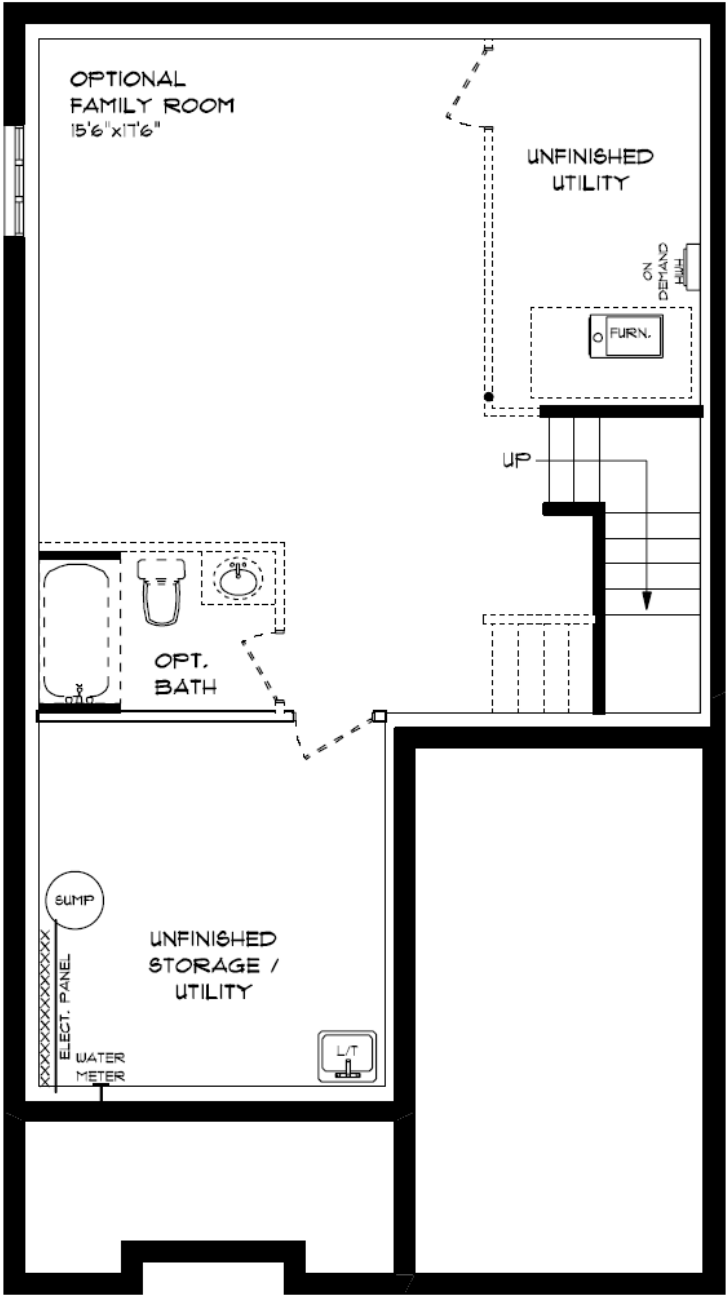
- SECOND FLOOR LAUNDRY
- PROFESSIONALLY DESIGNED
- CARPET FLOORING
- VINYL PLANK FLOORING
- WALK-IN CLOSET

SECOND FLOOR:  
APPROX 954 SQFT



# BASEMENT

12 CANARY ST, TILLSONBURG



BASEMENT:  
UNFINISHED

AIR CONDITIONING  
GAS FURNACE WITH HRV  
HUMIDIFIER  
NEW HOME WARRANTY

**HAYHOE™**  
— HOMES —

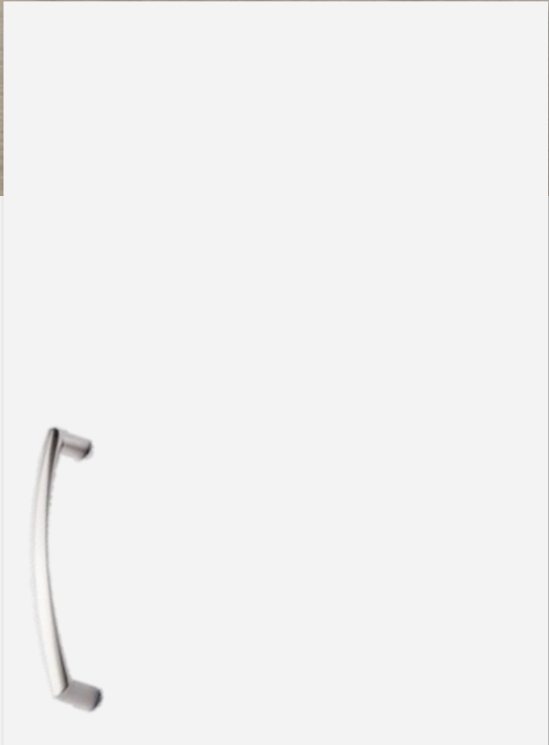


# INTERIOR FINISHES

12 CANARY ST



LUXURY VINYL PLANK



ISLAND PENDANTS



FOYER  
FIXTURE



KITCHEN  
CABINETRY

PRICE, PRODUCTS, COLOURS & FEATURES ARE SUBJECT TO CHANGE WITHOUT NOTICE.  
COLOURS SHOWN MAY VARY FROM INSTALLED MATERIALS. E & O.E

# INTERIOR FINISHES

12 CANARY ST

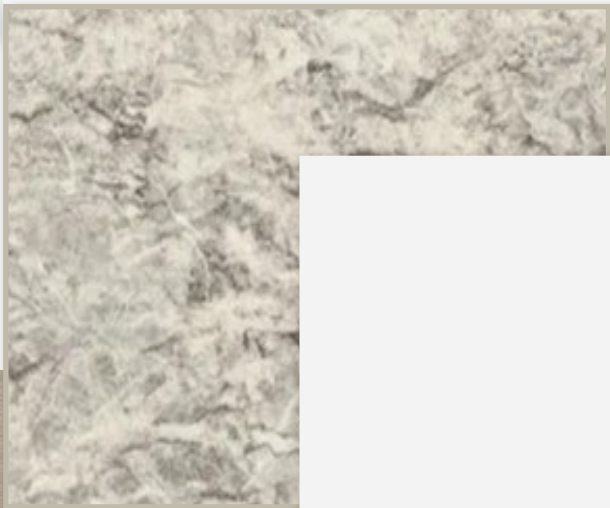
INTERIOR DOOR STYLE



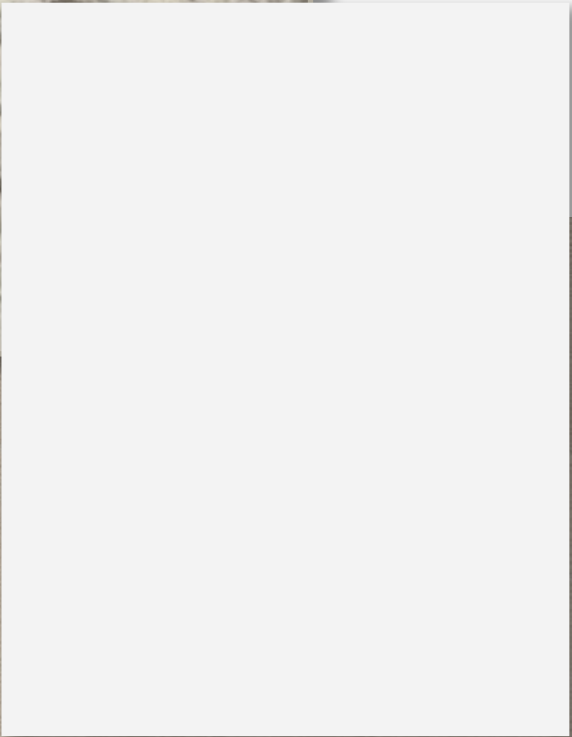
CARPET



BATHROOM  
COUNTERTOP



BATHROOM  
CABINETRY



LUXURY VINYL PLANK

