

WILLOW RUN

20 HEMLOCK CRESCENT

AYLMER | ONTARIO

SEMI-DETACHED



THE DETAILS

PRICE	\$535,000
CLOSING DATE	June 26, 2025
LOT NUMBER	42B
BEDROOMS	2
BATHS	2
GARAGE	1
DRIVEWAY	17'
SQ FT	1,225
MODEL	Semi-Detached

Emma Smith SALES PROFESSIONAL

519.409.1474 | emma.smith@hayhoehomes.com



WILLOW RUN

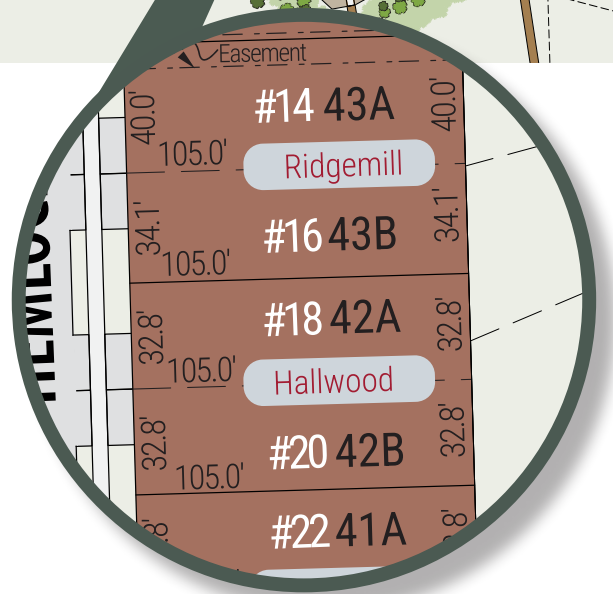
SITE PLAN

20 HEMLOCK CRESCENT | AYLMER ON



exterior features

- KEYLESS ENTRY
- TREATED WOOD DECK
- ASPHALT DRIVEWAY
- WALKING TRAILS



WILLOW RUN

20 HEMLOCK CRESCENT

MAIN FLOOR

1,225 sq ft

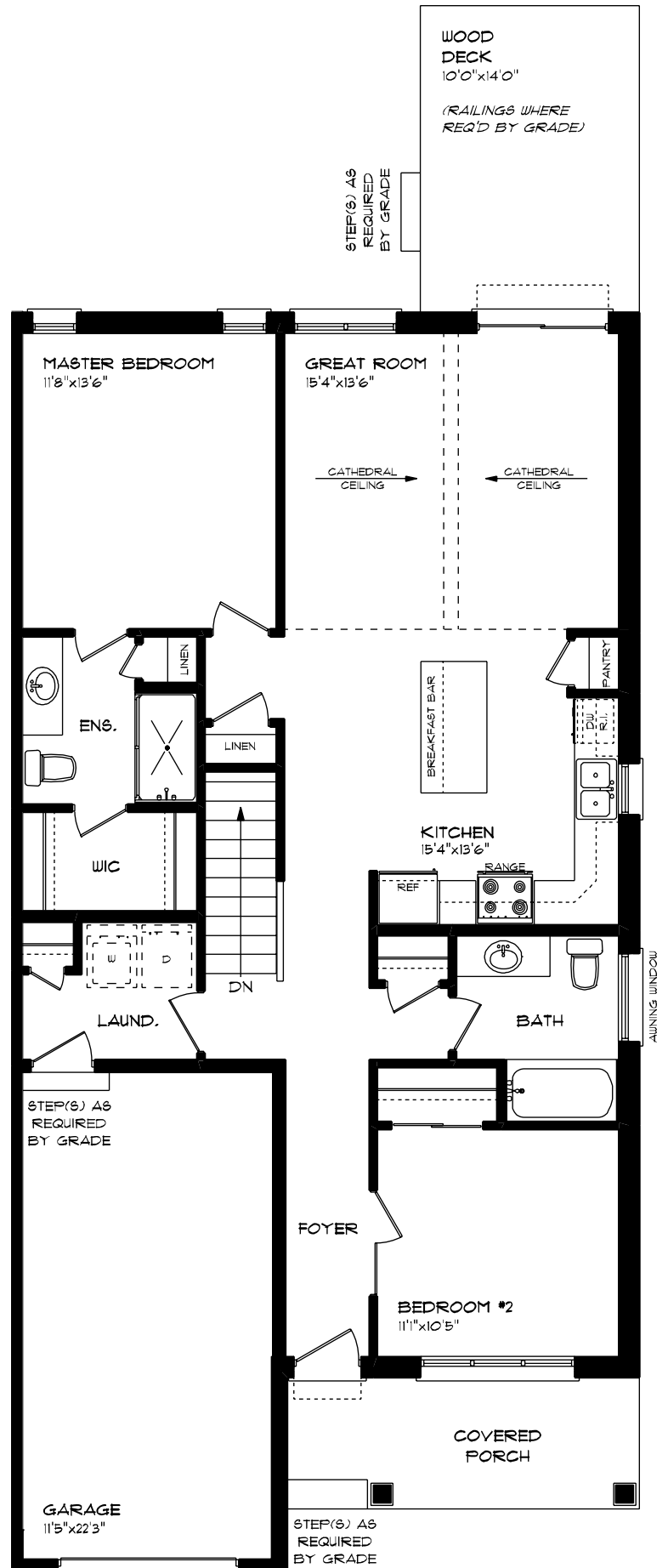
features

MAIN FLOOR LAUNDRY

QUARTZ COUNTERTOPS

VINYL PLANK FLOORING

KITCHEN ISLAND



WILLOW RUN

20 HEMLOCK CRESCENT

LOWER LEVEL UNFINISHED

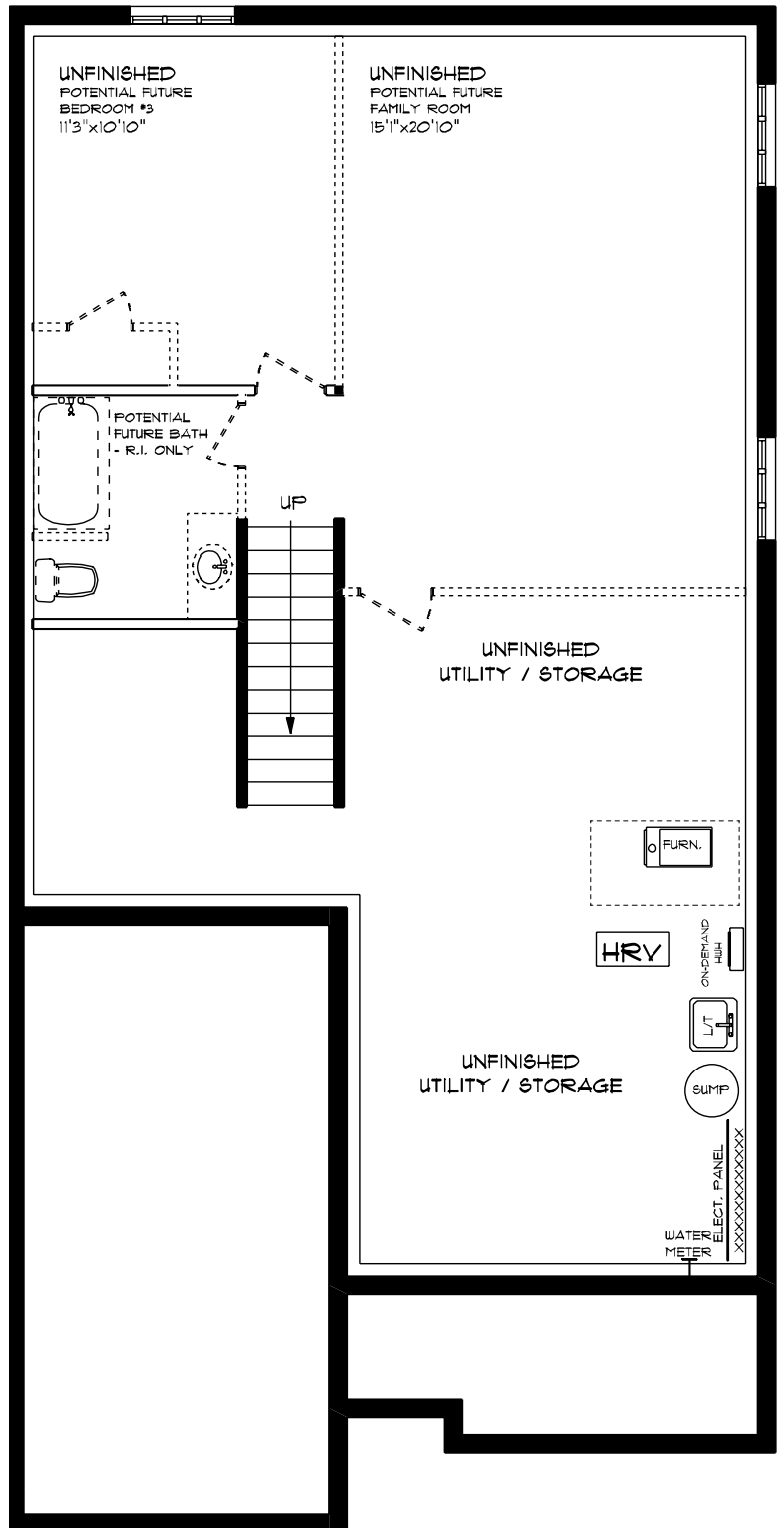
features

AIR CONDITIONING

GAS FURNACE WITH HRV

HUMIDIFIER

NEW HOME WARRANTY



WILLOW RUN

20 HEMLOCK CRESCENT

INTERIOR FINISHES

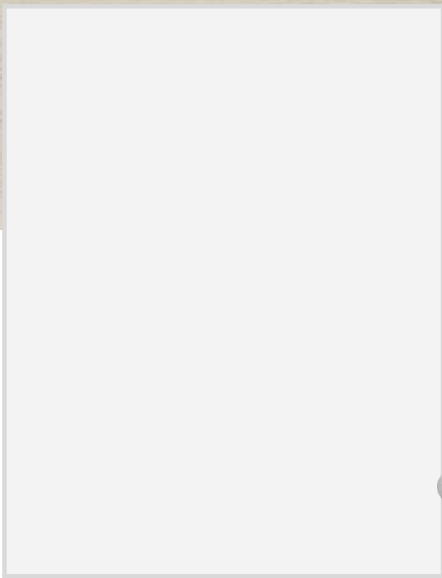


QUARTZ KITCHEN COUNTERTOPS

LUXURY VINYL PLANK



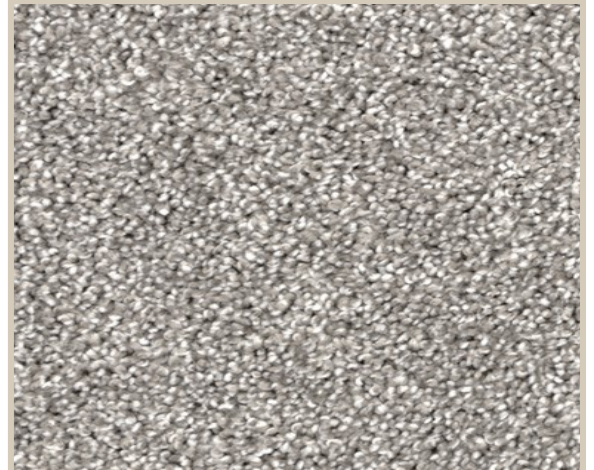
MELAMINE KITCHEN CABINETS



MELAMINE VANITY CABINETS



LAMINATE VANITY COUNTERTOPS



CARPET