

# ROLLING MEADOWS

INVENTORY HOME

3 Finch Street | Tillsonburg ON



## THE DETAILS

PRICE	\$799,000
CLOSING DATE	March 4, 2026
LOT NUMBER	15
BEDROOMS	4
BATHS	2.5
GARAGE	2
DRIVEWAY	21'
SQ FT	2,305
MODEL	Wellshire

**Janell Heyerman** SALES PROFESSIONAL  
519.842.2435 | janell.heyerman@hayhoehomes.com



# ROLLING MEADOWS

## SITE PLAN

3 Finch Street | Tillsonburg ON



### exterior features

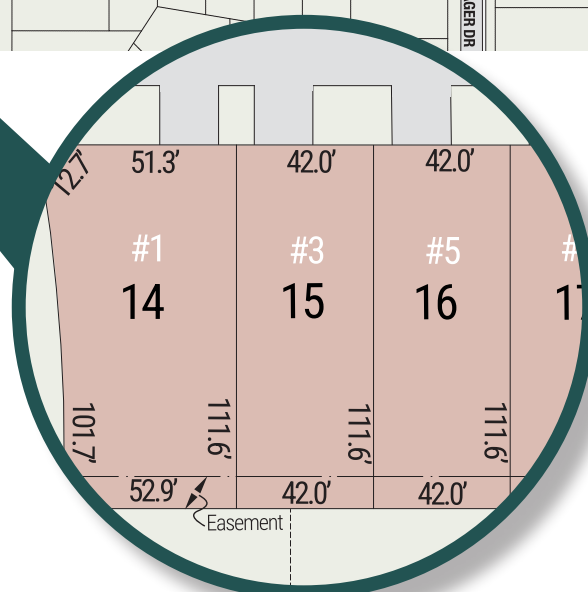
KEYLESS ENTRY

TREATED WOOD DECK

BBQ GAS LINE

ASPHALT DRIVEWAY

WALKING TRAILS



# ROLLING MEADOWS

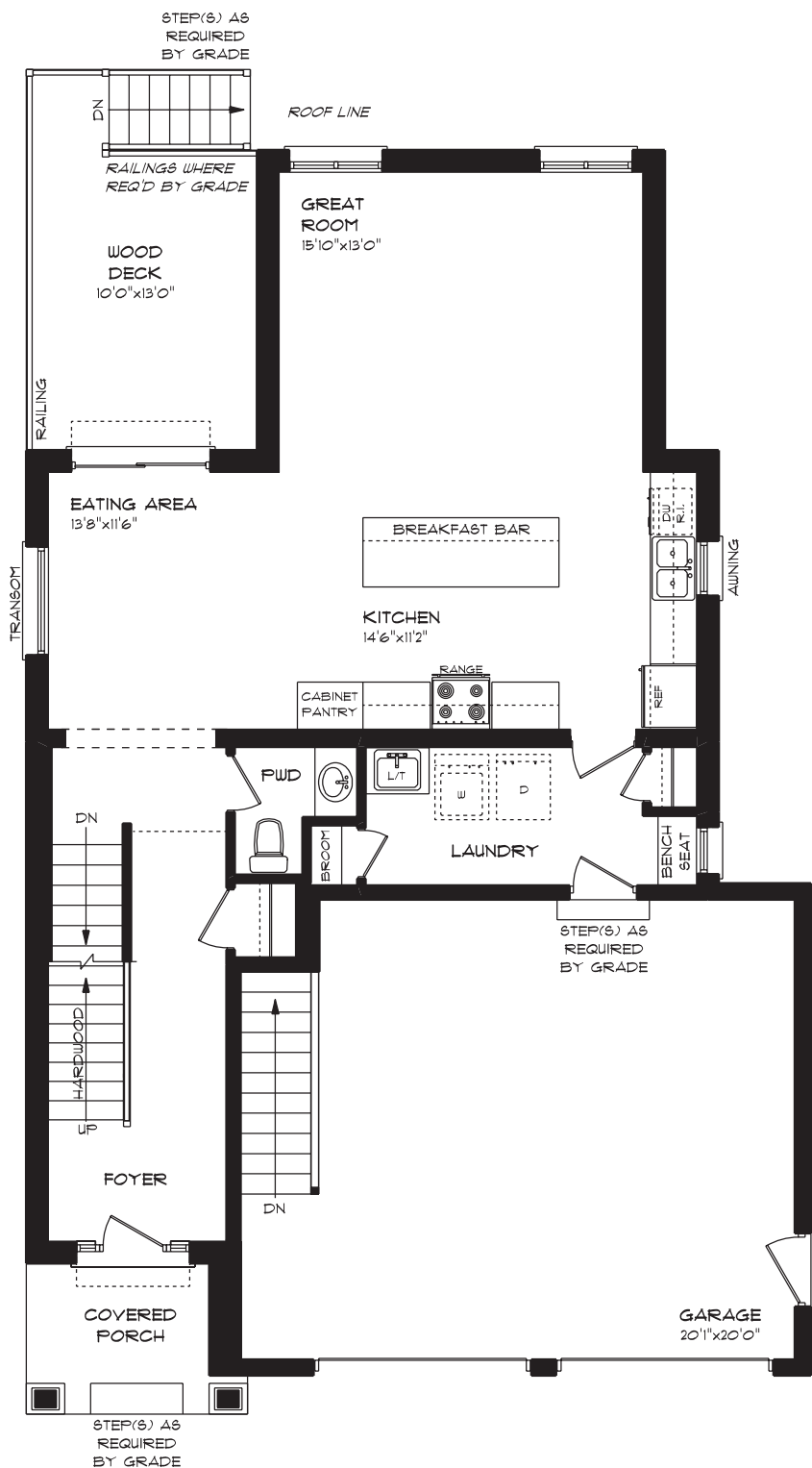
3 Finch Street | Tillsonburg ON

## MAIN FLOOR

970 sq ft

### features

- MAIN FLOOR LAUNDRY
- QUARTZ COUNTERTOPS
- KITCHEN BACKSPLASH
- DOUBLE CAR GARAGE
- GARAGE TO LOW. STAIRS
- CABINETRY PANTRY
- LARGE KITCHEN ISLAND
- POT LIGHTS
- HARDWOOD STAIRS
- HARDWOOD FLOORING
- TILE FLOORING



# ROLLING MEADOWS

3 Finch Street | Tillsonburg ON

## SECOND FLOOR

923 sq ft

### features

PROFESSIONALLY DESIGNED

SOAKER TUB

CARPET FLOORING

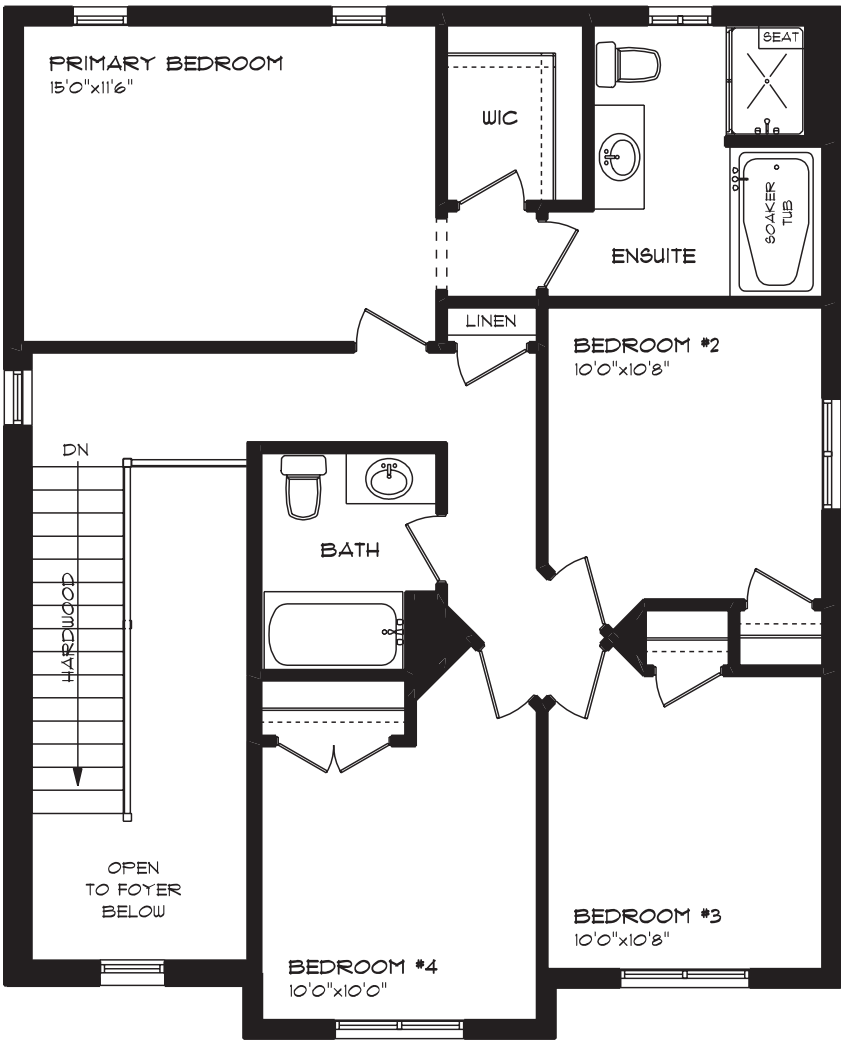
CERAMIC TILE FLOORING

WALK-IN CLOSET

UPGRADED FAUCETS

HARDWOOD STAIRS

TWO STOREY FOYER



# ROLLING MEADOWS

3 Finch Street | Tillsonburg ON

## LOWER LEVEL

412 sq ft

### features

CARPET FLOORING

FINISHED FAMILY ROOM

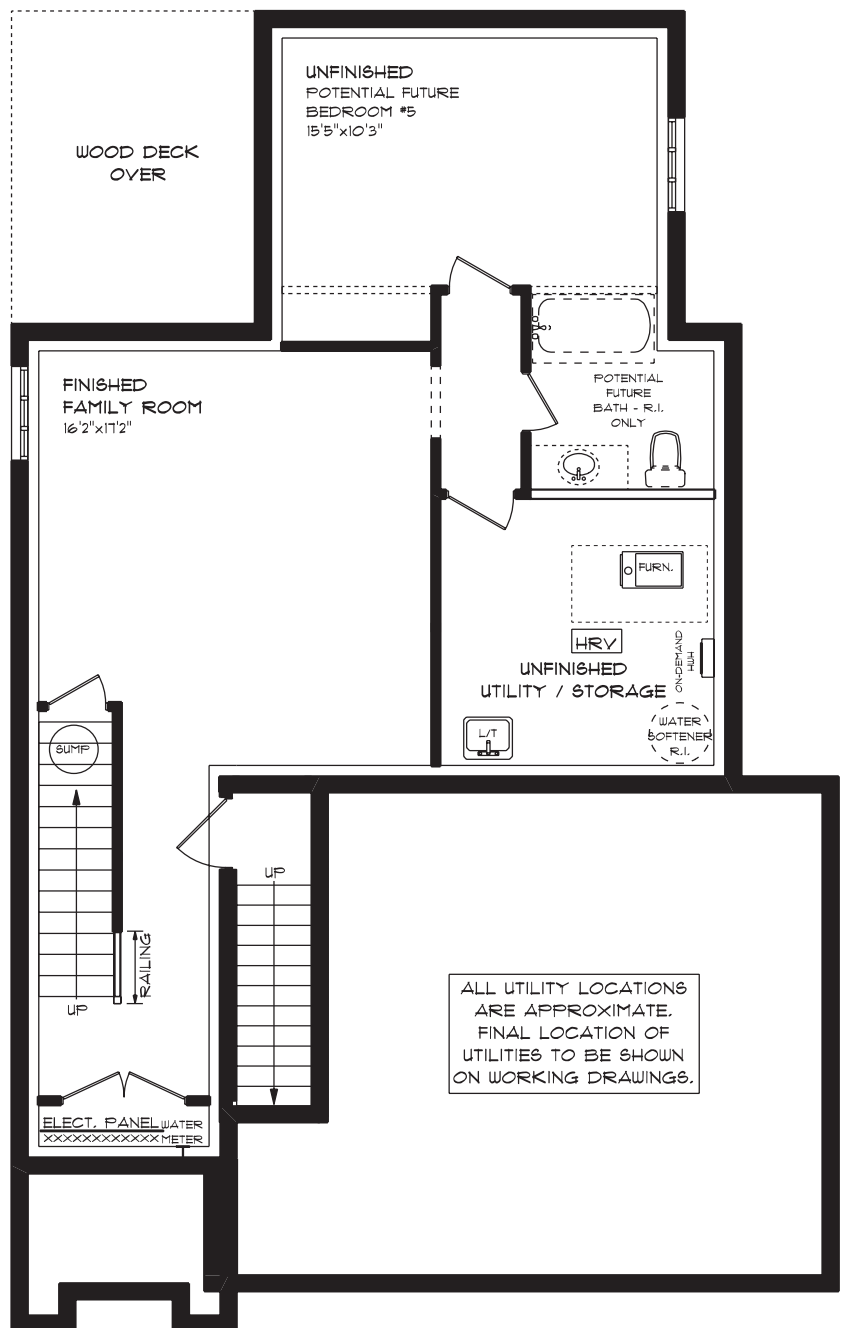
AIR CONDITIONING

GAS FURNACE WITH HRV

HUMIDIFIER

NEW HOME WARRANTY

BATHROOM ROUGH-IN







3 Finch Street | Tillsonburg ON

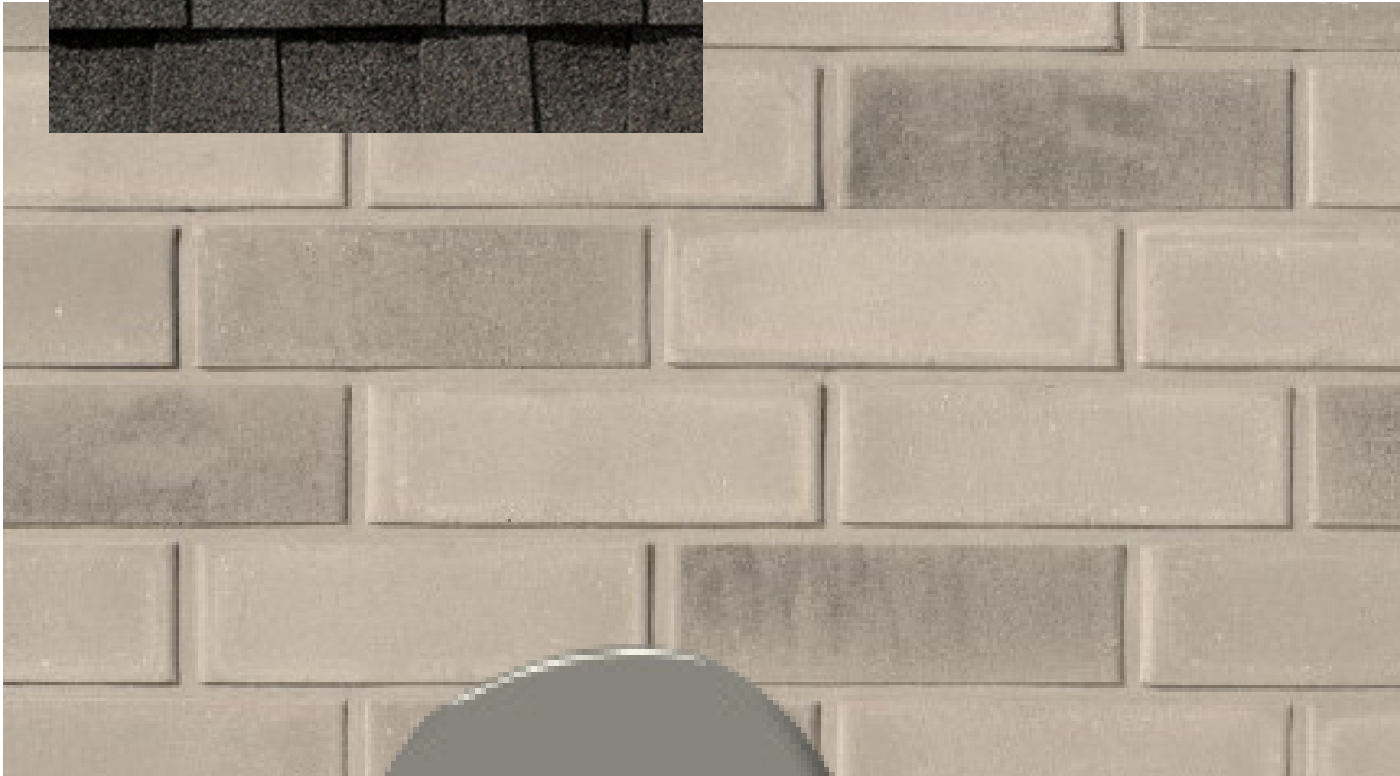
EXTERIOR FINISHES



SHINGLES



SIDING



BRICK



STONE ACCENT



FRONT DOOR

ALUMINUM

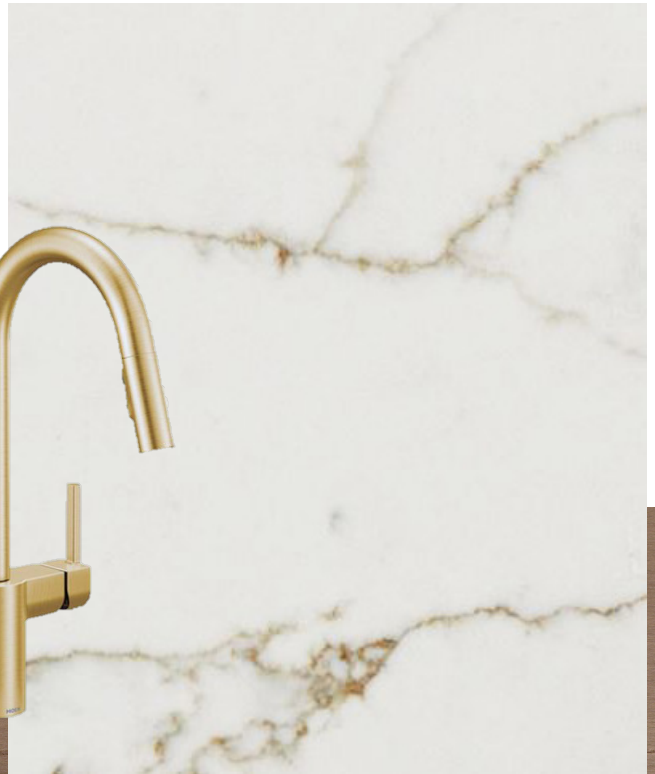


WINDOWS & GARAGE DOOR



QUARTZ KITCHEN COUNTERTOPS

KITCHEN BACKSPLASH



WALL COLOUR



PAINTED KITCHEN UPPERS & ISLAND



TILE THROUGHOUT



STAINED KITCHEN LOWERS





CARPET



INTERIOR DOOR STYLE



QUARTZ ENSUITE COUNTERTOP



TILE THROUGHOUT



STAINED ENSUITE VANITY



PAINTED MAIN BATH VANITY

WALL COLOUR



LAMINATE  
MAIN BATH  
COUNTERTOP

