

WILLOW RUN

109 WILLOW DRIVE

AYLMER | ONTARIO

TOWNHOME



THE DETAILS

PRICE	\$499,000
CLOSING DATE	January 22, 2026
LOT NUMBER	6D
BEDROOMS	3
BATHS	2.5
GARAGE	1
DRIVEWAY	17'
SQ FT	1,645
MODEL	Townhome

Emma Smith SALES PROFESSIONAL

519.409.1474 | emma.smith@hayhoehomes.com



WWW.HAYHOEHOMES.COM

Price, products, colours & features are subject to change without notice. E. & O. E. MAY 14, 2025

HAYHOETM
— HOMES —

WILLOW RUN

SITE PLAN

109 WILLOW DRIVE | AYLMER ON



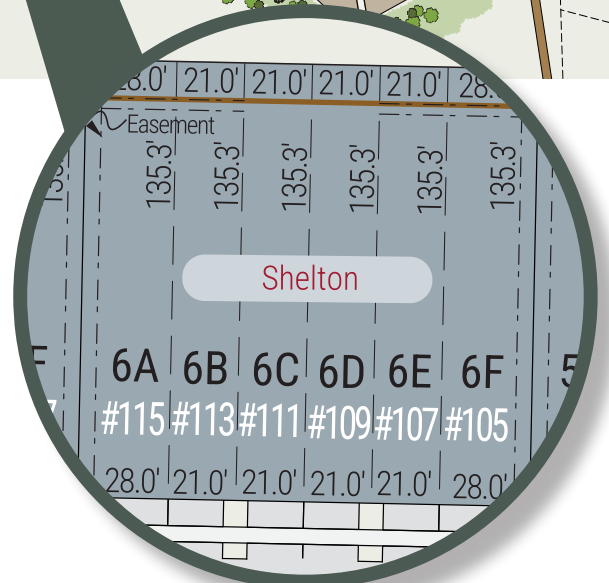
exterior features

KEYLESS ENTRY

TREATED WOOD DECK

ASPHALT DRIVEWAY

WALKING TRAILS



WILLOW RUN

109 WILLOW DRIVE

MAIN FLOOR

765 sq ft

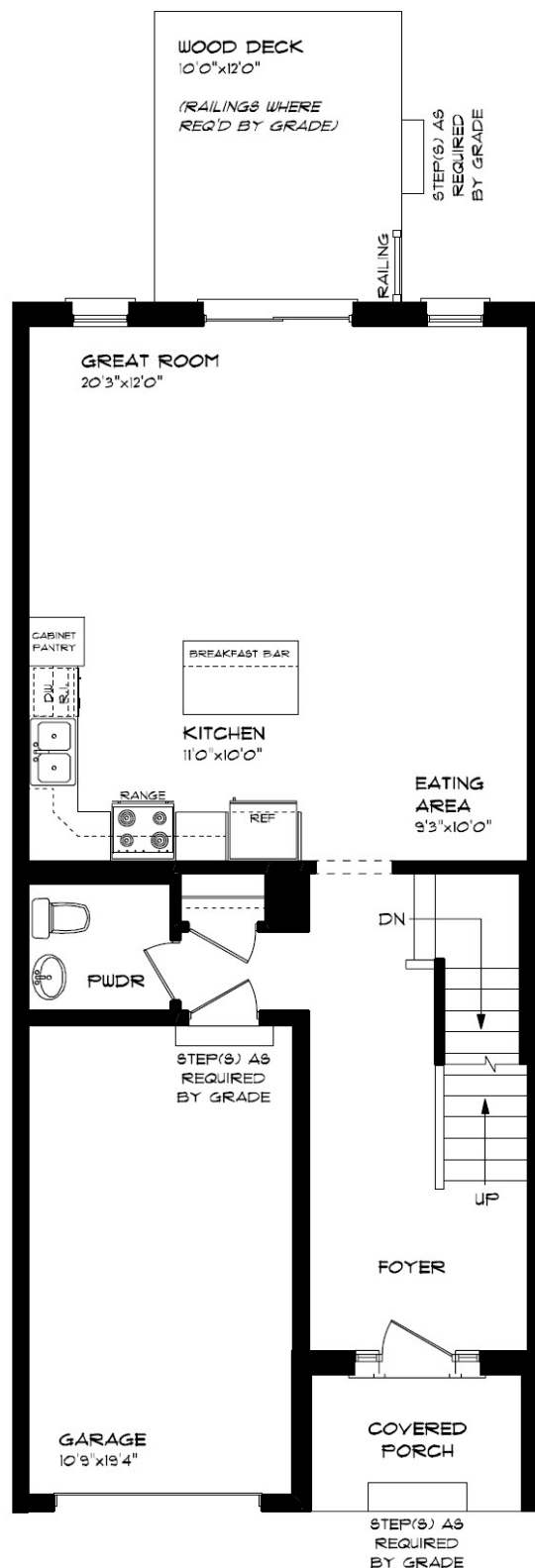
features

QUARTZ COUNTERTOPS

VINYL PLANK FLOORING

KITCHEN ISLAND

8' CEILINGS



WILLOW RUN

109 WILLOW DRIVE

SECOND FLOOR

880 sq ft

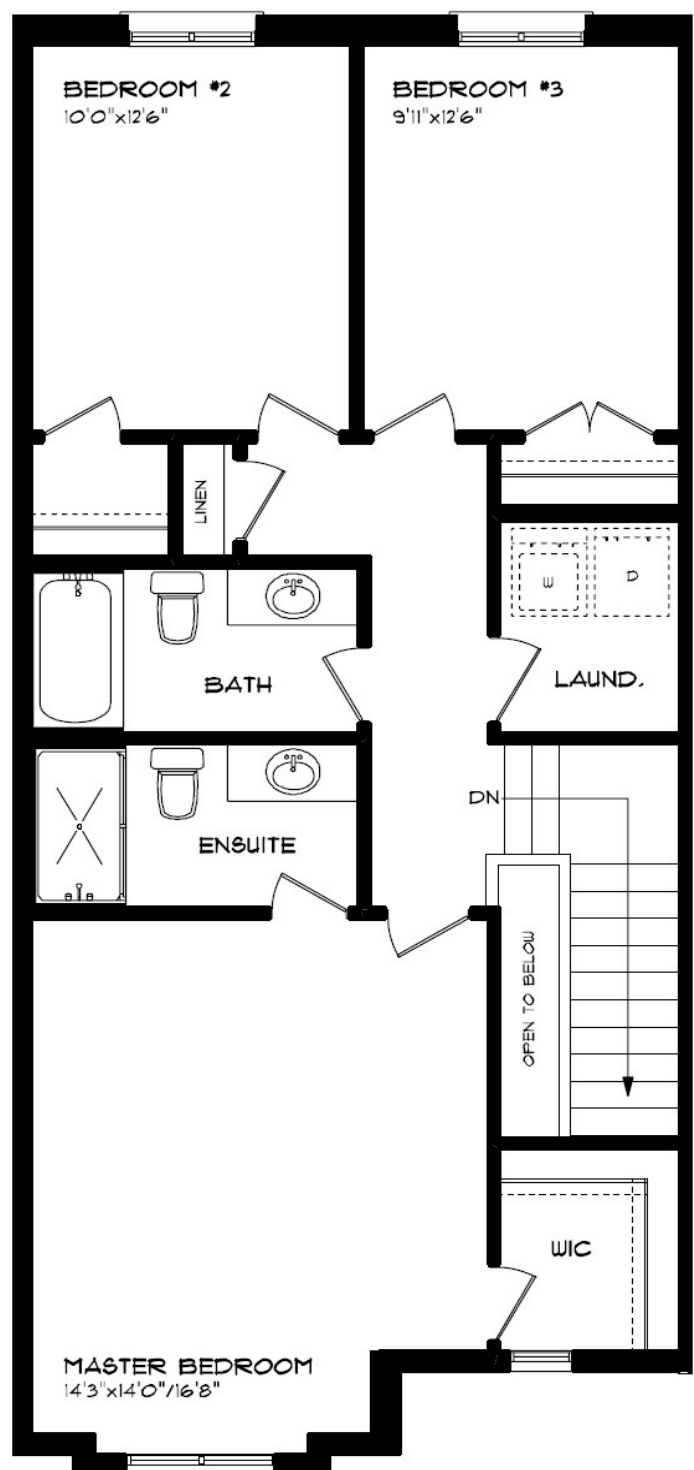
features

PROFESSIONALLY DESIGNED

CARPET FLOORING

VINYL PLANK FLOORING

WALK-IN CLOSET



WILLOW RUN

109 WILLOW DRIVE

LOWER LEVEL UNFINISHED

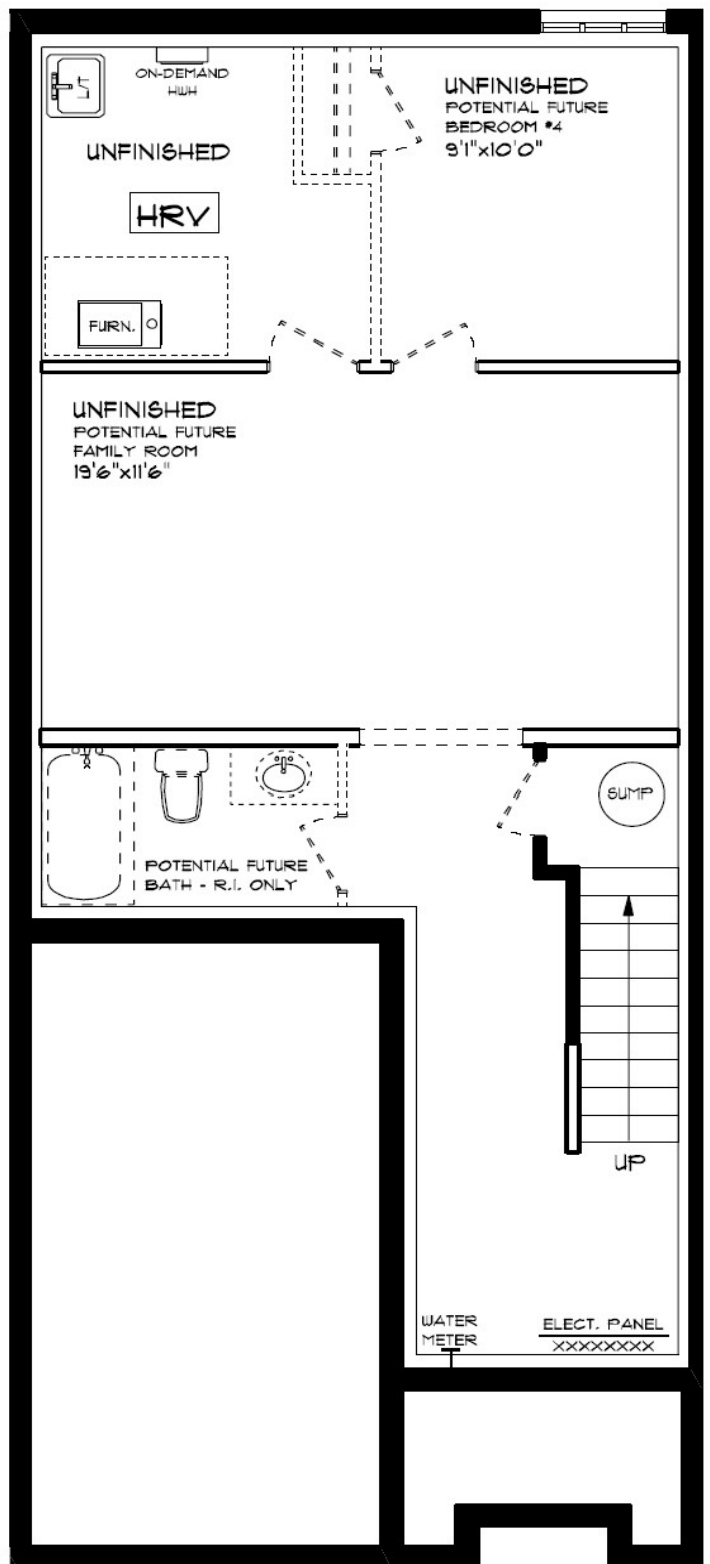
features

AIR CONDITIONING

GAS FURNACE WITH HRV

HUMIDIFIER

NEW HOME WARRANTY



WILLOW
RUN

109 WILLOW DRIVE

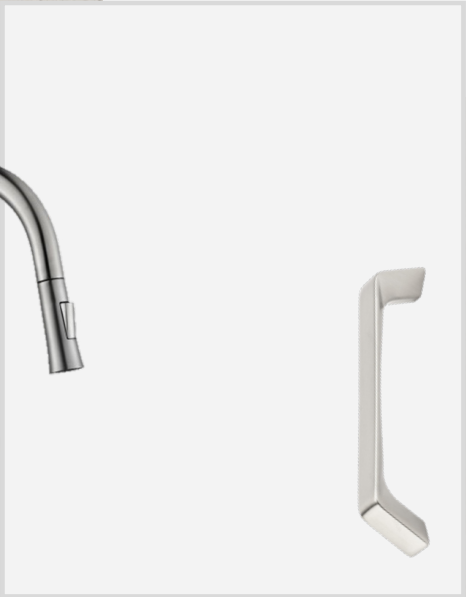
INTERIOR FINISHES



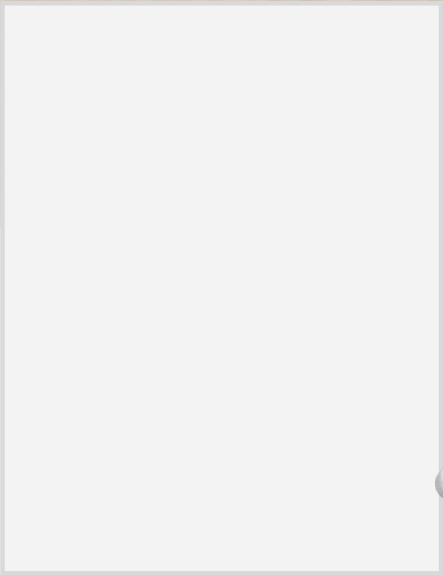
QUARTZ KITCHEN COUNTERTOPS



LUXURY VINYL PLANK



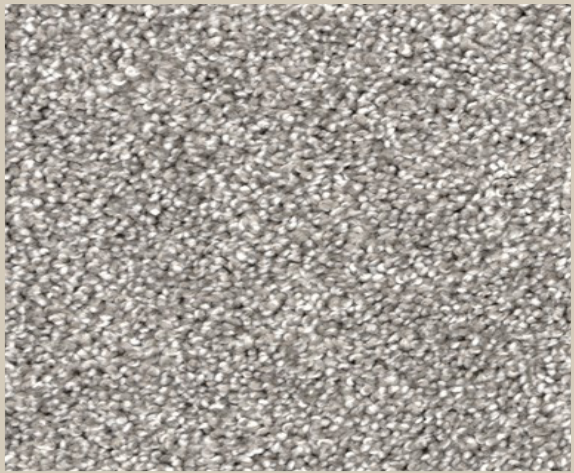
MELAMINE KITCHEN CABINETRY



MELAMINE VANITY CABINETRY



LAMINATE VANITY COUNTERTOPS



CARPET