

# WILLOW RUN

65 WILLOW DRIVE

AYLMER | ONTARIO

TOWNHOME

PREMIUM  
SPECS



## THE DETAILS

PRICE	\$555,000
CLOSING DATE	Available Now
LOT NUMBER	2B
BEDROOMS	1+2
BATHS	2.5
GARAGE	2
DRIVEWAY	19'
SQ FT	1,972
MODEL	Townhome

Emma Smith SALES PROFESSIONAL

519.409.1474 | emma.smith@hayhoehomes.com



[www.HayhoeHomes.com](http://www.HayhoeHomes.com)

Price, products, colours & features are subject to change without notice. E. & O. E. NOVEMBER 2024

**HAYHOE**<sup>TM</sup>  
— HOMES —

# WILLOW RUN

## SITE PLAN

65 WILLOW DRIVE | AYLMER ON



### exterior features

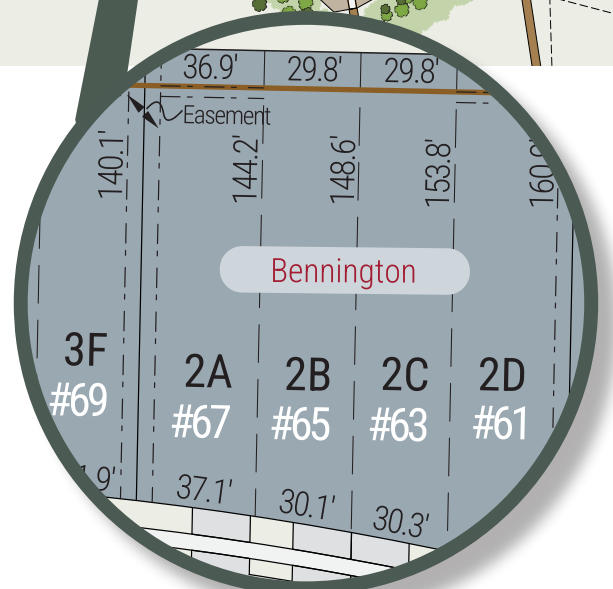
KEYLESS ENTRY

TREATED WOOD DECK

BBQ GAS LINE

ASPHALT DRIVEWAY

WALKING TRAILS



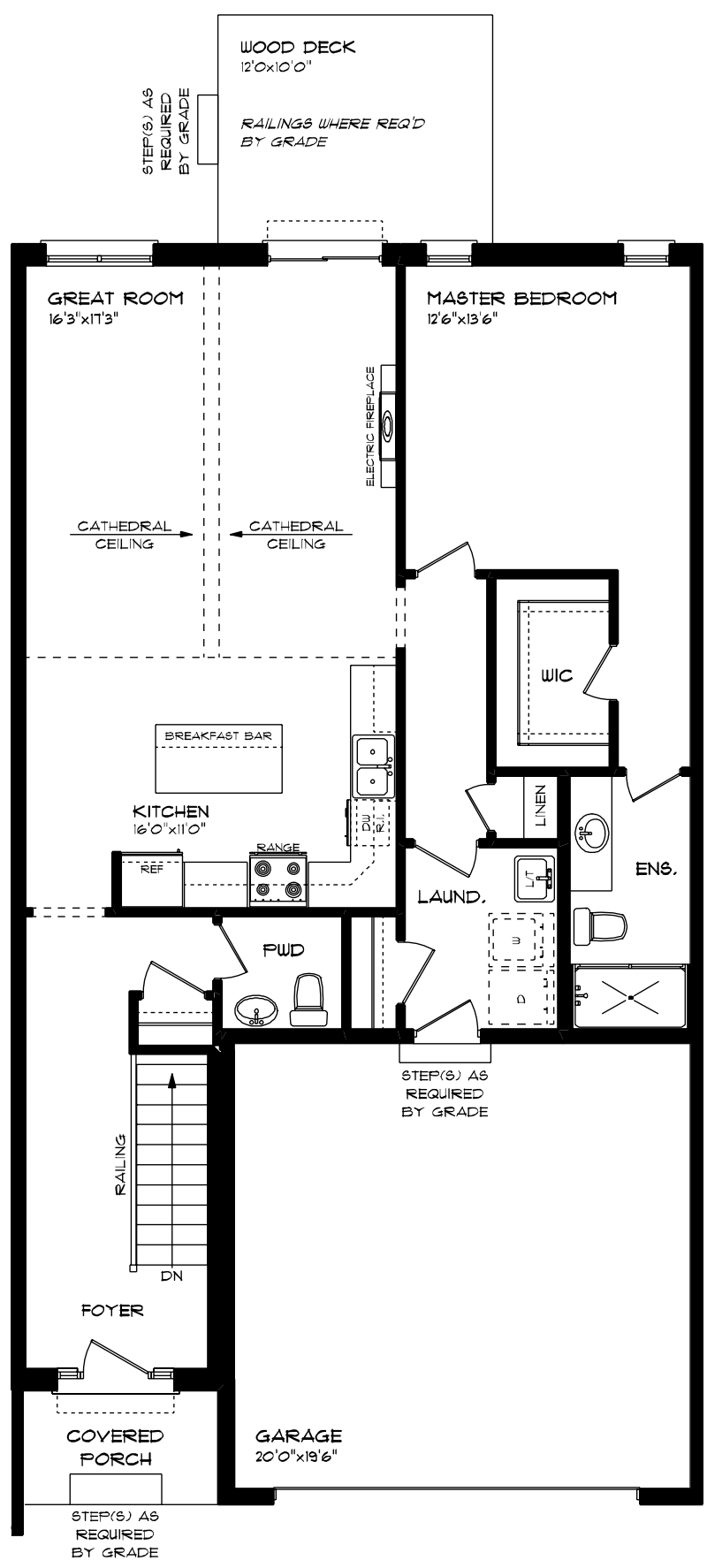
# WILLOW RUN

65 WILLOW DRIVE

MAIN FLOOR  
1,180 sq ft

features

- MAIN FLOOR LAUNDRY
- QUARTZ COUNTERTOPS
- KITCHEN BACKSPLASH
- DOUBLE CAR GARAGE



# WILLOW RUN

65 WILLOW DRIVE

## LOWER LEVEL

792 sq ft

### features

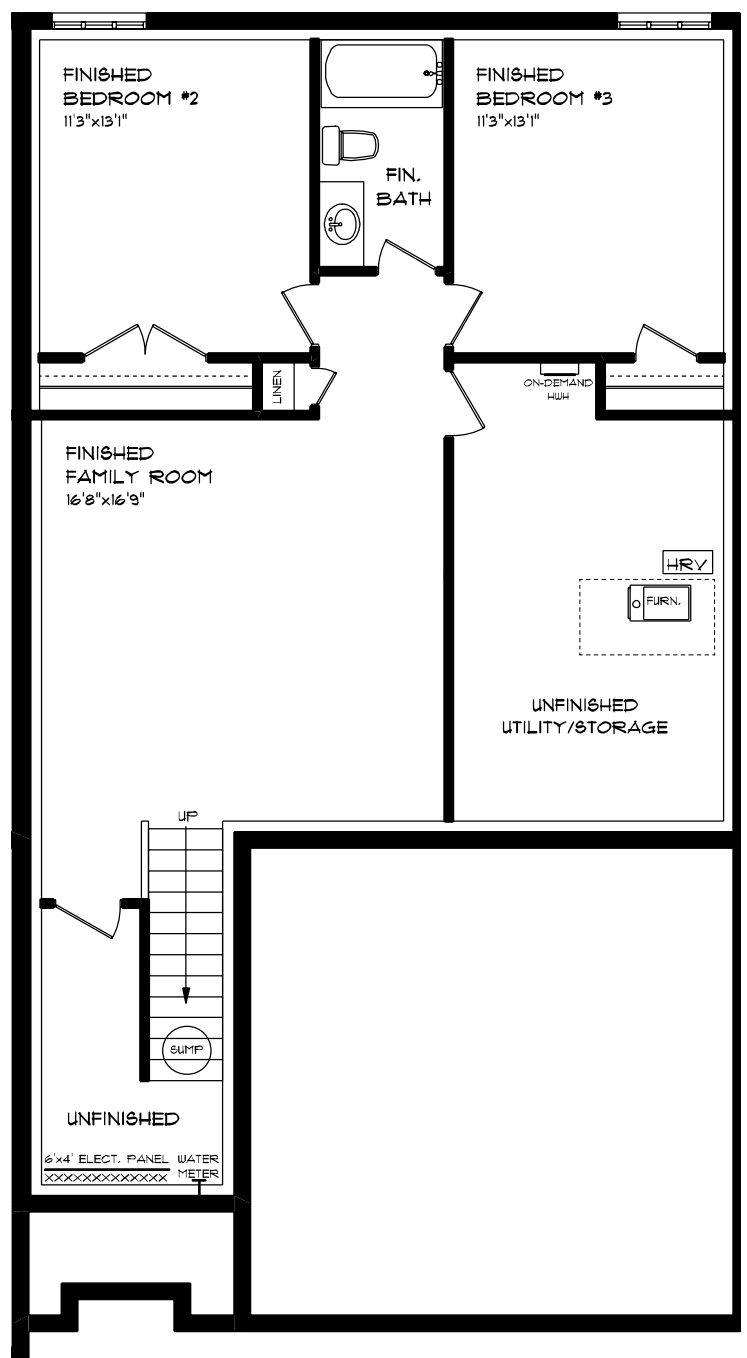
CARPET FLOORING

AIR CONDITIONING

GAS FURNACE WITH HRV

HUMIDIFIER

NEW HOME WARRANTY





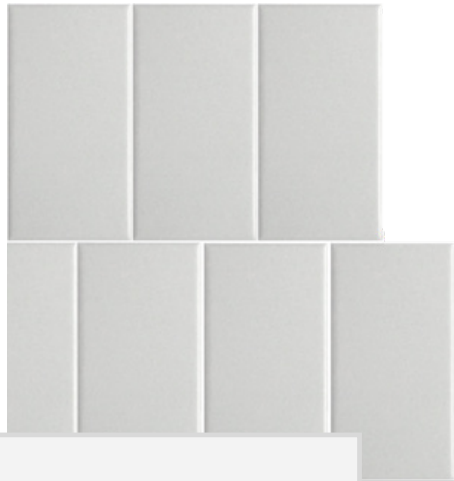
# WILLOW RUN

65 WILLOW DRIVE

## INTERIOR FINISHES



KITCHEN BACKSPLASH



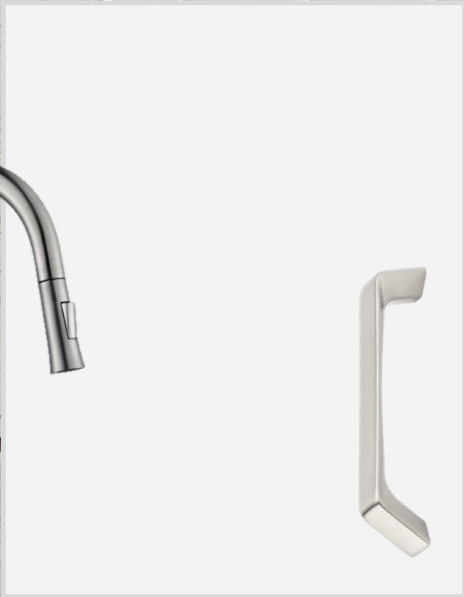
QUARTZ KITCHEN COUNTERTOPS



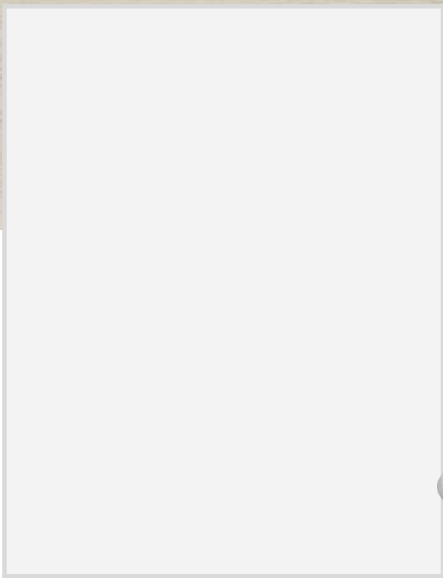
LUXURY VINYL PLANK



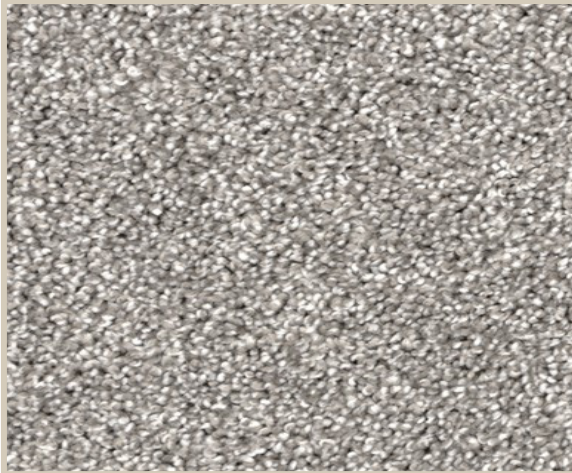
MELAMINE KITCHEN  
CABINETRY



MELAMINE VANITY  
CABINETRY



LAMINATE VANITY  
COUNTERTOPS



CARPET