

ROLLING MEADOWS

TOWNHOME

74 Woodcock Drive | Tillsonburg ON

ESSENTIAL
SPECS



THE DETAILS

PRICE	\$526,500
CLOSING DATE	April 6, 2026
LOT NUMBER	45A
BEDROOMS	3
BATHS	2.5
GARAGE	1
DRIVEWAY	17'
SQ FT	1,644
MODEL	Shelton

Laura Babcock SALES PROFESSIONAL

519.520.0539 | laura.babcock@hayhoehomes.com



WWW.HAYHOEHOMES.COM

Price, products, colours & features are subject to change without notice. E. & O. E. JULY 24, 2025

HAYHOETM
HOMES

ROLLING MEADOWS

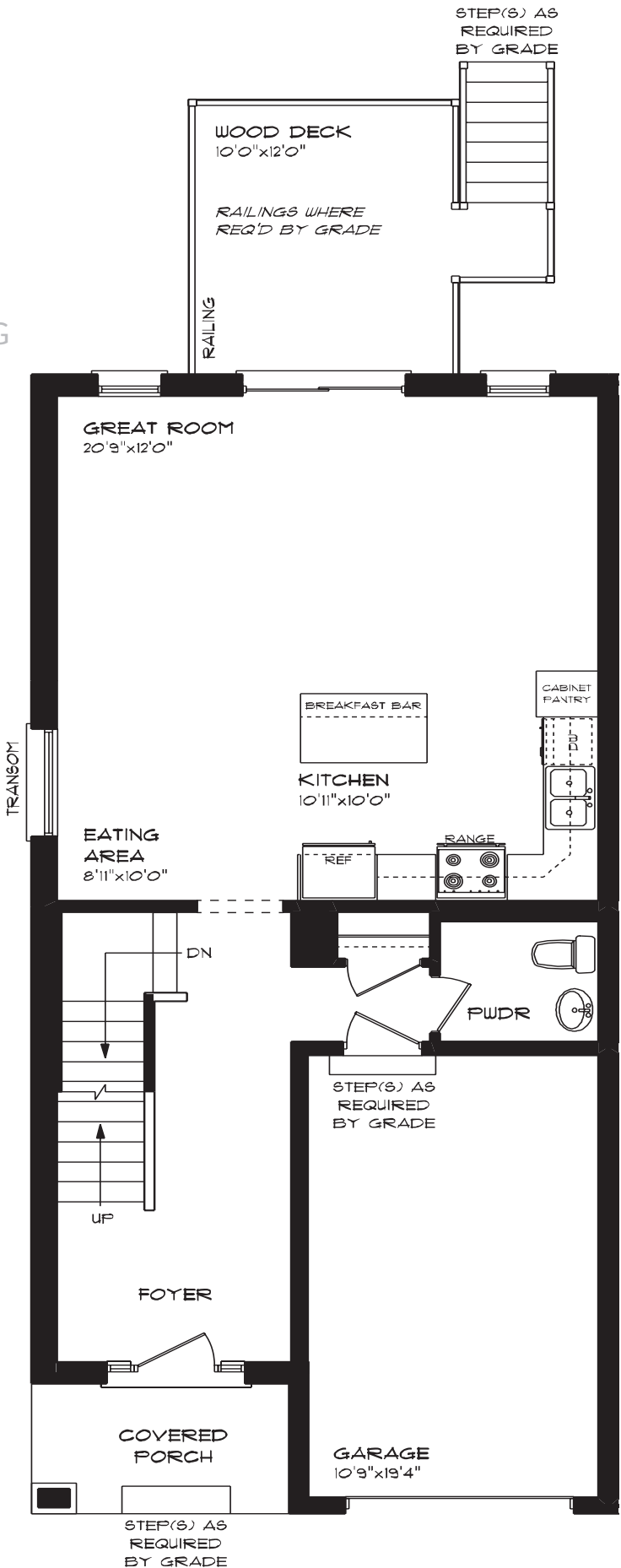
74 Woodcock Drive | Tillsonburg ON

MAIN FLOOR

779 sq ft

features

- QUARTZ COUNTERTOPS
- LUXURY VINYL PLANK FLOORING
- KITCHEN ISLAND
- 8' MAIN FLOOR CEILING
- SINGLE CAR GARAGE
- KITCHEN PANTRY



ROLLING MEADOWS

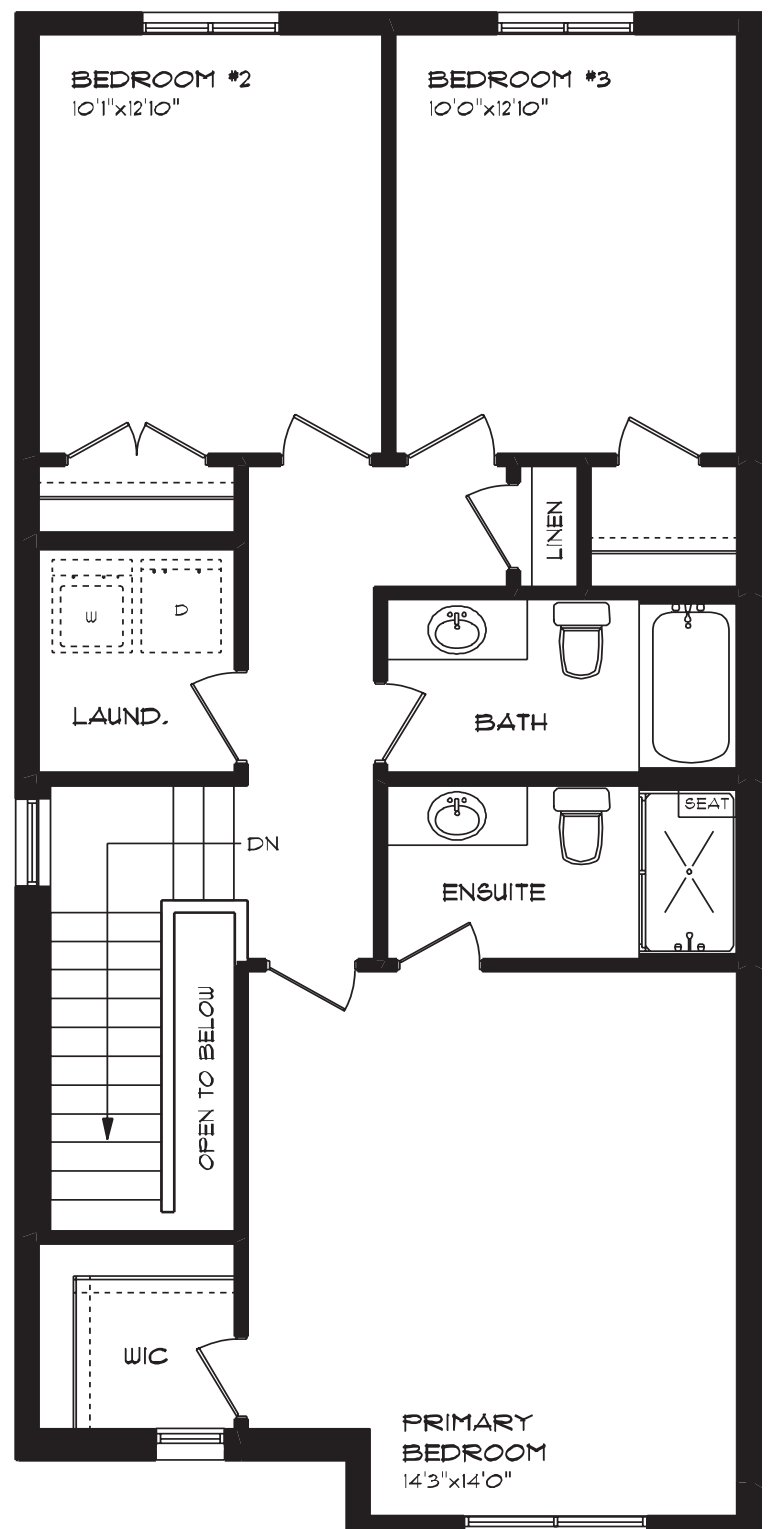
74 Woodcock Drive | Tillsonburg ON

SECOND FLOOR

885 sq ft

features

- PROFESSIONALLY DESIGNED
- LUXURY VINYL PLANK FLOORING
- CARPET FLOORING
- SECOND FLOOR LAUNDRY
- ENSUITE BATH
- WALK-IN CLOSET



ROLLING MEADOWS

74 Woodcock Drive | Tillsonburg ON

LOWER LEVEL

Unfinished

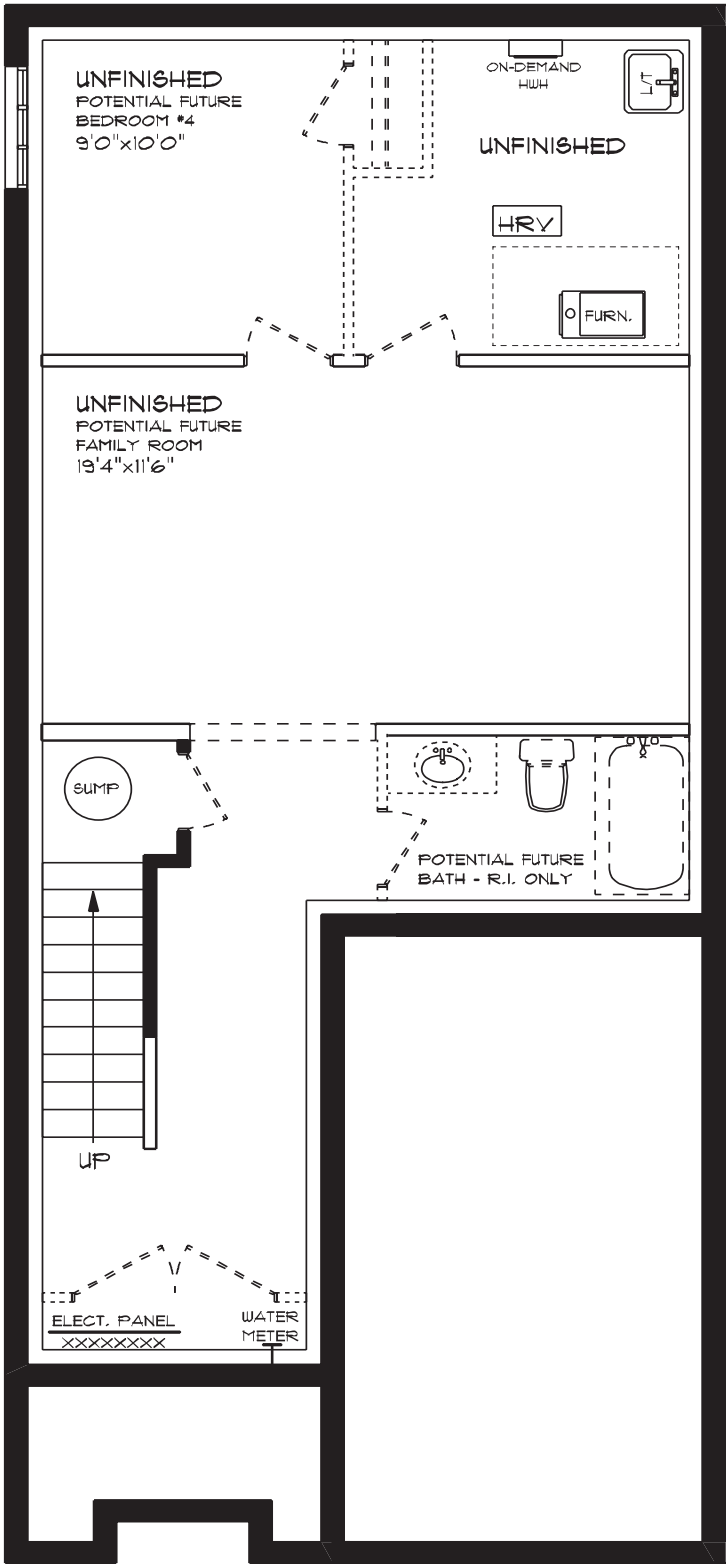
features

AIR CONDITIONING

GAS FURNACE WITH HRV

HUMIDIFIER

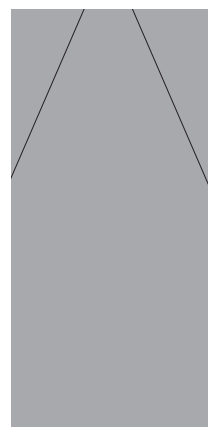
NEW HOME WARRANTY



ROLLING MEADOWS

74 Woodcock Drive | Tillsonburg ON

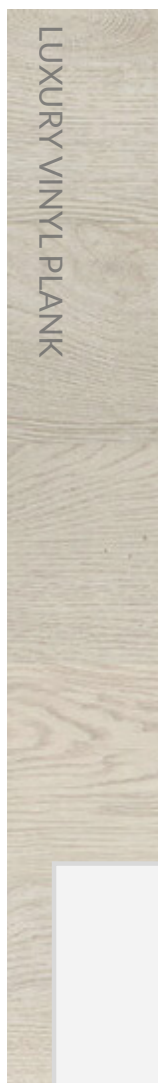
INTERIOR FINISHES



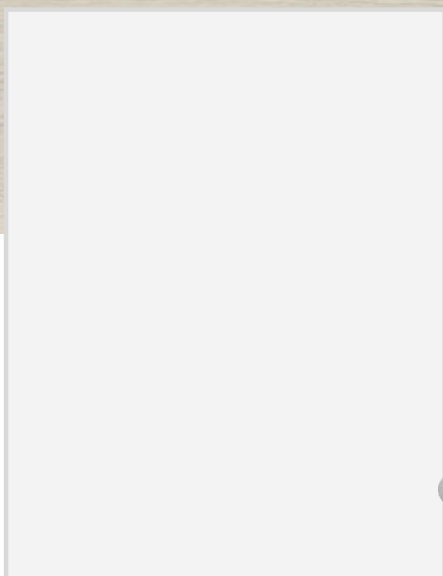
QUARTZ KITCHEN COUNTERTOPS



LUXURY VINYL PLANK



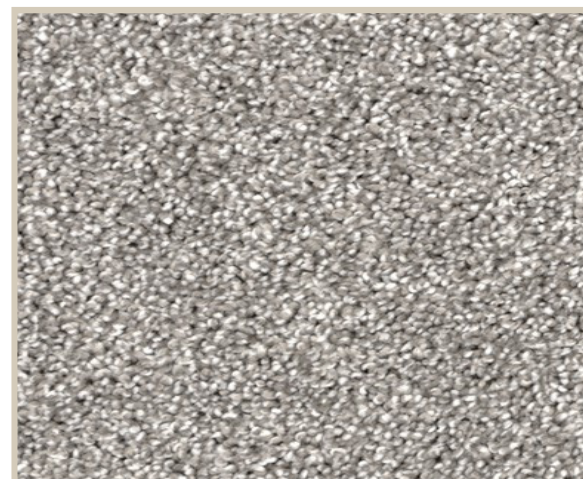
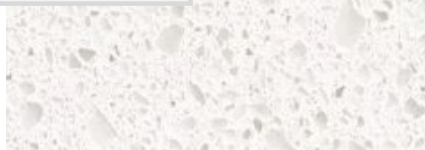
MELAMINE KITCHEN CABINETS



MELAMINE VANITY CABINETS



LAMINATE VANITY COUNTERTOPS



CARPET