

WILLOW RUN

67 WILLOW DRIVE

AYLMER | ONTARIO

TOWNHOME

PREMIUM
SPECS



THE DETAILS

| | |
|--------------|---------------|
| PRICE | \$599,000 |
| CLOSING DATE | April 8, 2025 |
| LOT NUMBER | 2A |
| BEDROOMS | 1+2 |
| BATHS | 2.5 |
| GARAGE | 2 |
| DRIVEWAY | 19' |
| SQ FT | 1,979 |
| MODEL | Townhome |

Emma Smith SALES PROFESSIONAL

519.409.1474 | emma.smith@hayhoehomes.com



WWW.HAYHOEHOMES.COM

Price, products, colours & features are subject to change without notice. E. & O. E. NOVEMBER 2024

HAYHOETM
— HOMES —

WILLOW RUN

SITE PLAN

67 WILLOW DRIVE | AYLMER ON



exterior features

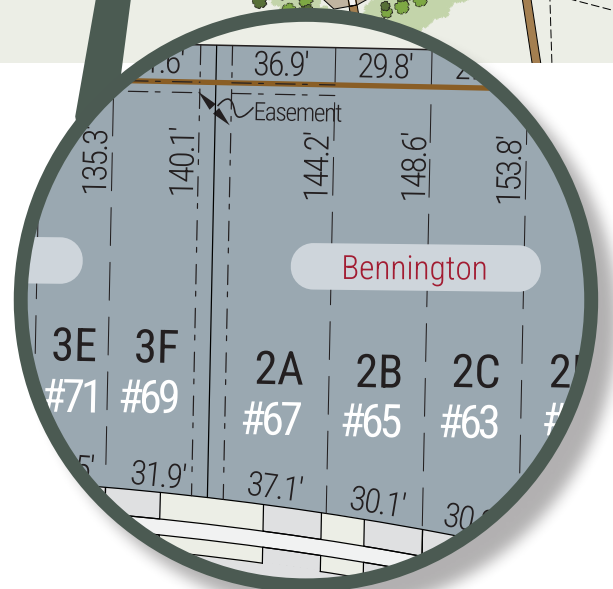
KEYLESS ENTRY

TREATED WOOD DECK

BBQ GAS LINE

ASPHALT DRIVEWAY

WALKING TRAILS



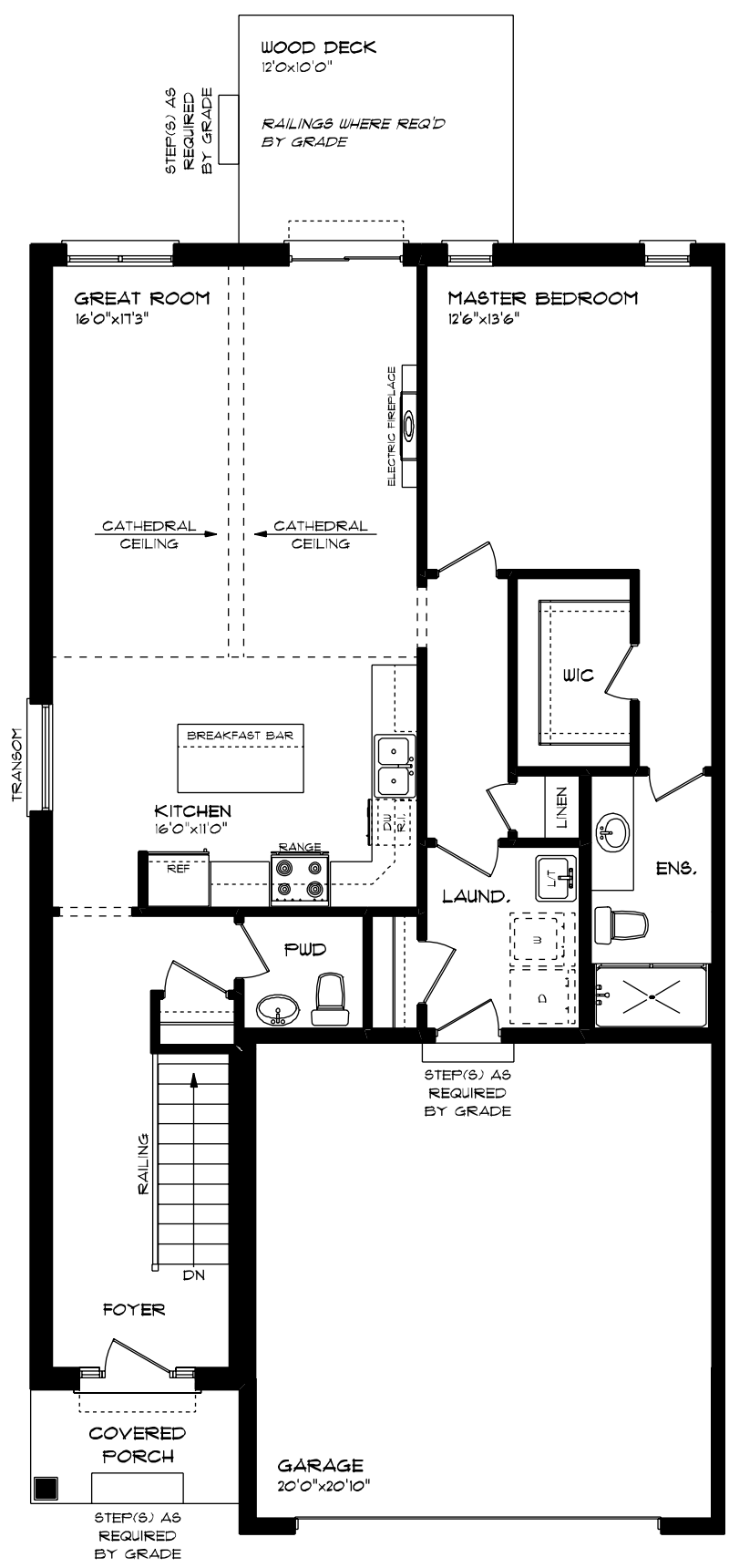
WILLOW RUN

67 WILLOW DRIVE

MAIN FLOOR
1,197 sq ft

features

- MAIN FLOOR LAUNDRY
- QUARTZ COUNTERTOPS
- KITCHEN BACKSPLASH
- DOUBLE CAR GARAGE



WILLOW RUN

67 WILLOW DRIVE

LOWER LEVEL

782 sq ft

features

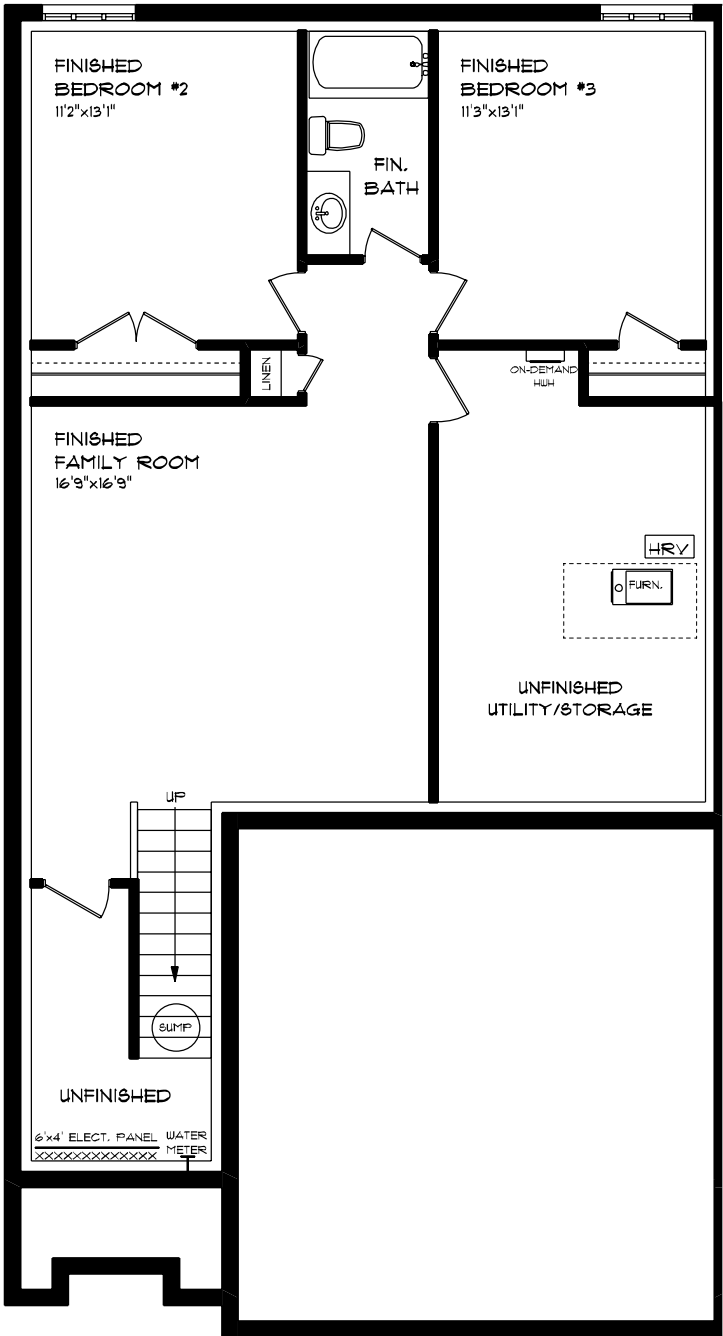
CARPET FLOORING

AIR CONDITIONING

GAS FURNACE WITH HRV

HUMIDIFIER

NEW HOME WARRANTY



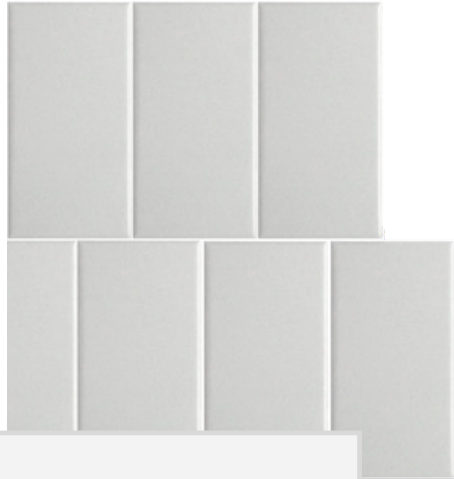
WILLOW RUN

67 WILLOW DRIVE

INTERIOR FINISHES



KITCHEN BACKSPLASH



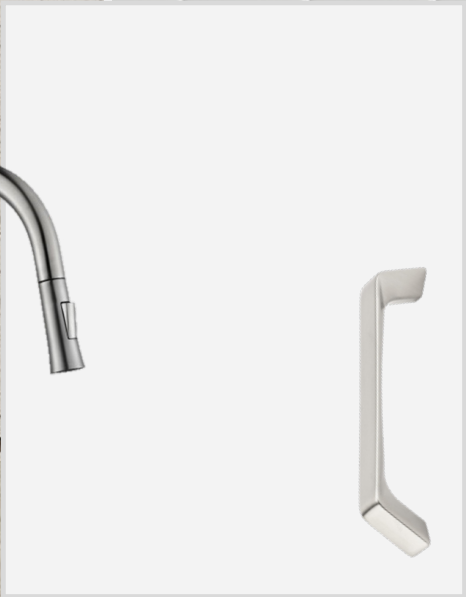
QUARTZ KITCHEN COUNTERTOPS



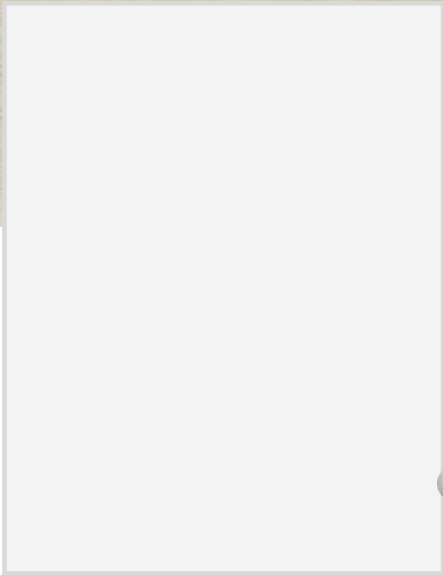
LUXURY VINYL PLANK



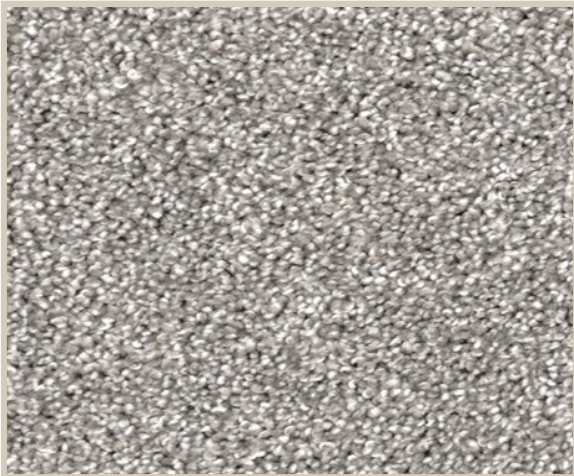
MELAMINE KITCHEN
CABINETRY



MELAMINE VANITY
CABINETRY



LAMINATE VANITY
COUNTERTOPS



CARPET