

WILLOW RUN

2 HEMLOCK CRESCENT

AYLMER | ONTARIO

TOWNHOME

PREMIUM
SPECS



THE DETAILS

PRICE \$629,000

CLOSING DATE May 7, 2025

LOT NUMBER 46A

BEDROOMS 3

BATHS 2.5

GARAGE 2

DRIVEWAY 17'

SQ FT 1,831

MODEL Semi

Emma Smith SALES PROFESSIONAL

519.409.1474 | emma.smith@hayhoehomes.com



WWW.HAYHOEHOMES.COM

Price, products, colours & features are subject to change without notice. E. & O. E. DATE MAR 2025

HAYHOETM
HOMES

WILLOW RUN

SITE PLAN

2 HEMLOCK CRESCENT | AYLMER ON



exterior features

KEYLESS ENTRY

TREATED WOOD DECK

BBQ GAS LINE

ASPHALT DRIVEWAY

WALKING TRAILS

WILLOW RUN

2 HEMLOCK CRESCENT

MAIN FLOOR

1,225 sq ft

features

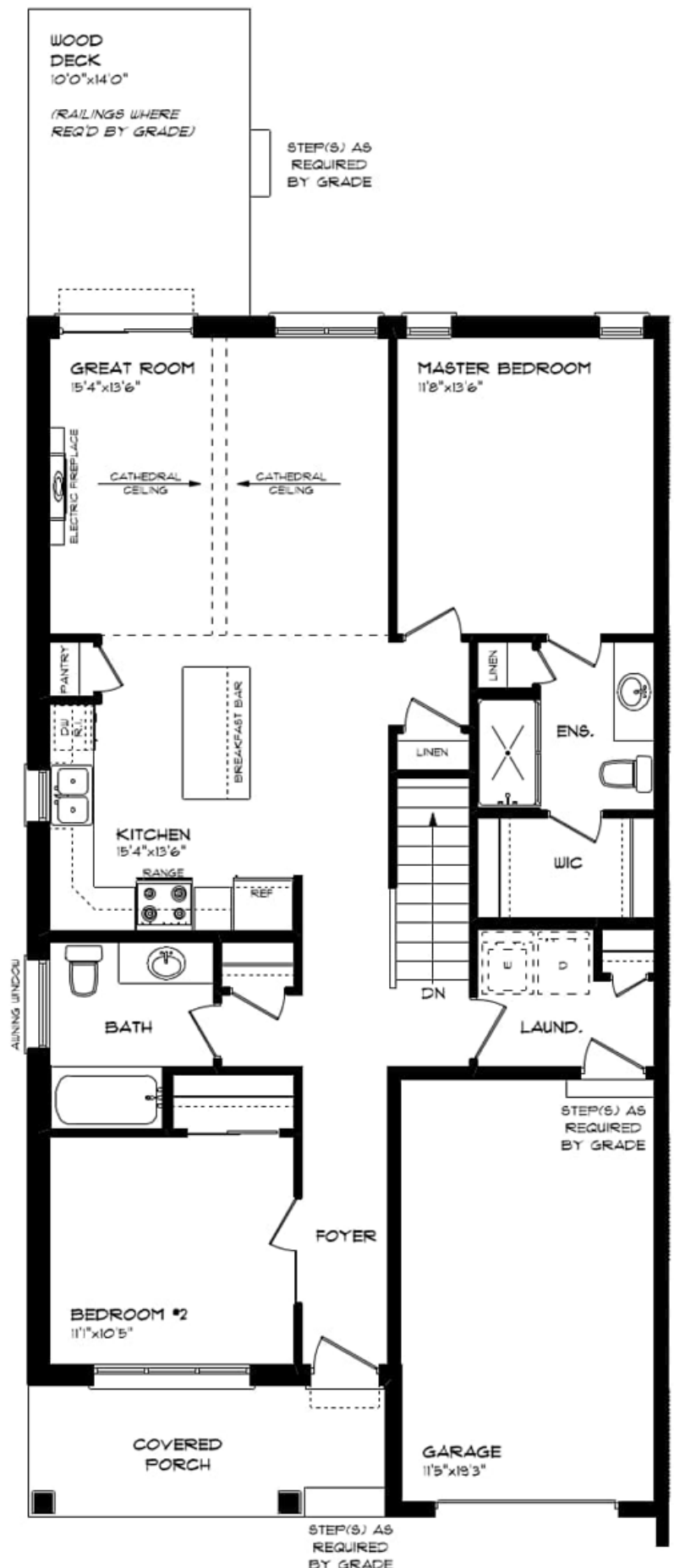
MAIN FLOOR LAUNDRY

QUARTZ COUNTERTOPS

KITCHEN BACKSPLASH

DOUBLE CAR GARAGE

ELECTRIC FIREPLACE



WILLOW RUN

2 HEMLOCK CRESCENT

LOWER LEVEL

606 sq ft

features

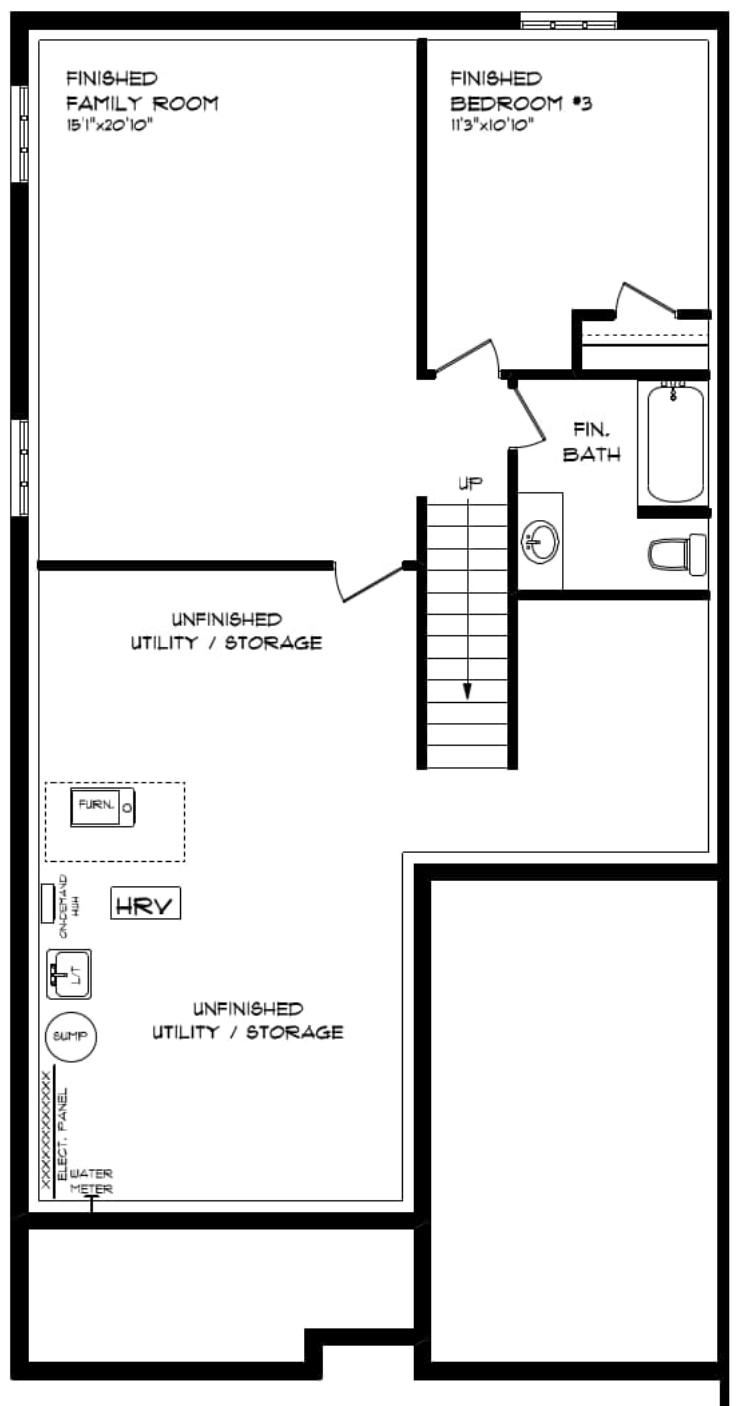
CARPET FLOORING

AIR CONDITIONING

GAS FURNACE WITH HRV

HUMIDIFIER

NEW HOME WARRANTY



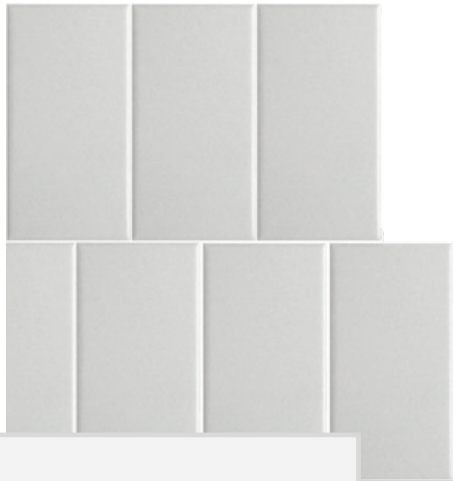
WILLOW RUN

2 HEMLOCK CRESCENT



INTERIOR FINISHES

KITCHEN BACKSPLASH



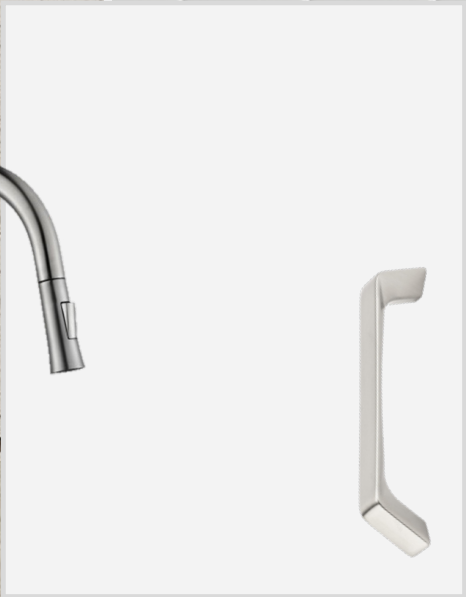
QUARTZ KITCHEN COUNTERTOPS



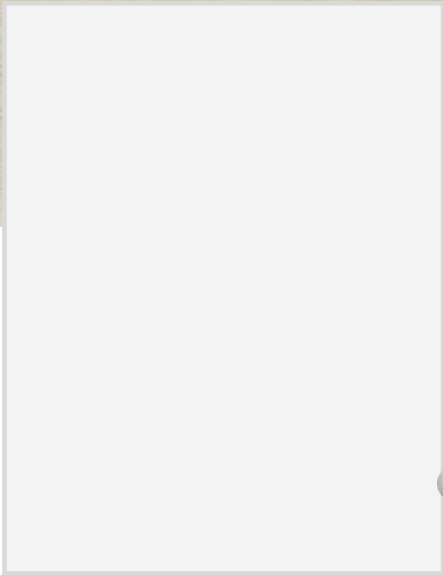
LUXURY VINYL PLANK



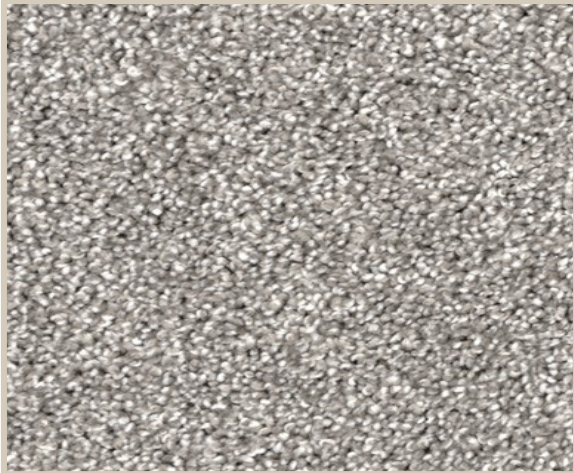
MELAMINE KITCHEN
CABINETRY



MELAMINE VANITY
CABINETRY



LAMINATE VANITY
COUNTERTOPS



CARPET