

ROLLING MEADOWS

TOWNHOME

6 Finch Street | Tillsonburg ON

ESSENTIAL
& SPECS



THE DETAILS

PRICE	\$534,000
CLOSING DATE	January 26, 2026
LOT NUMBER	42A
BEDROOMS	2
BATHS	2
GARAGE	1
DRIVEWAY	11'5"
SQ FT	1,225
MODEL	Arbor

Laura Babcock SALES PROFESSIONAL

519.520.0539 | laura.babcock@hayhoehomes.com



WWW.HAYHOEHOMES.COM

Price, products, colours & features are subject to change without notice. E. & O. E. JUNE 3, 2025

HAYHOE[™]
HOMES

ROLLING MEADOWS

SITE PLAN

6 Finch Street | Tillsonburg ON



exterior features

KEYLESS ENTRY

TREATED WOOD DECK

BBQ GAS LINE

ASPHALT DRIVEWAY

WALKING TRAILS

www.hayhoehomes.com

Price, products, colours & features are subject to change without notice. E. & O. E. JUNE 3, 2025

HAYHOETM
HOMES

ROLLING MEADOWS

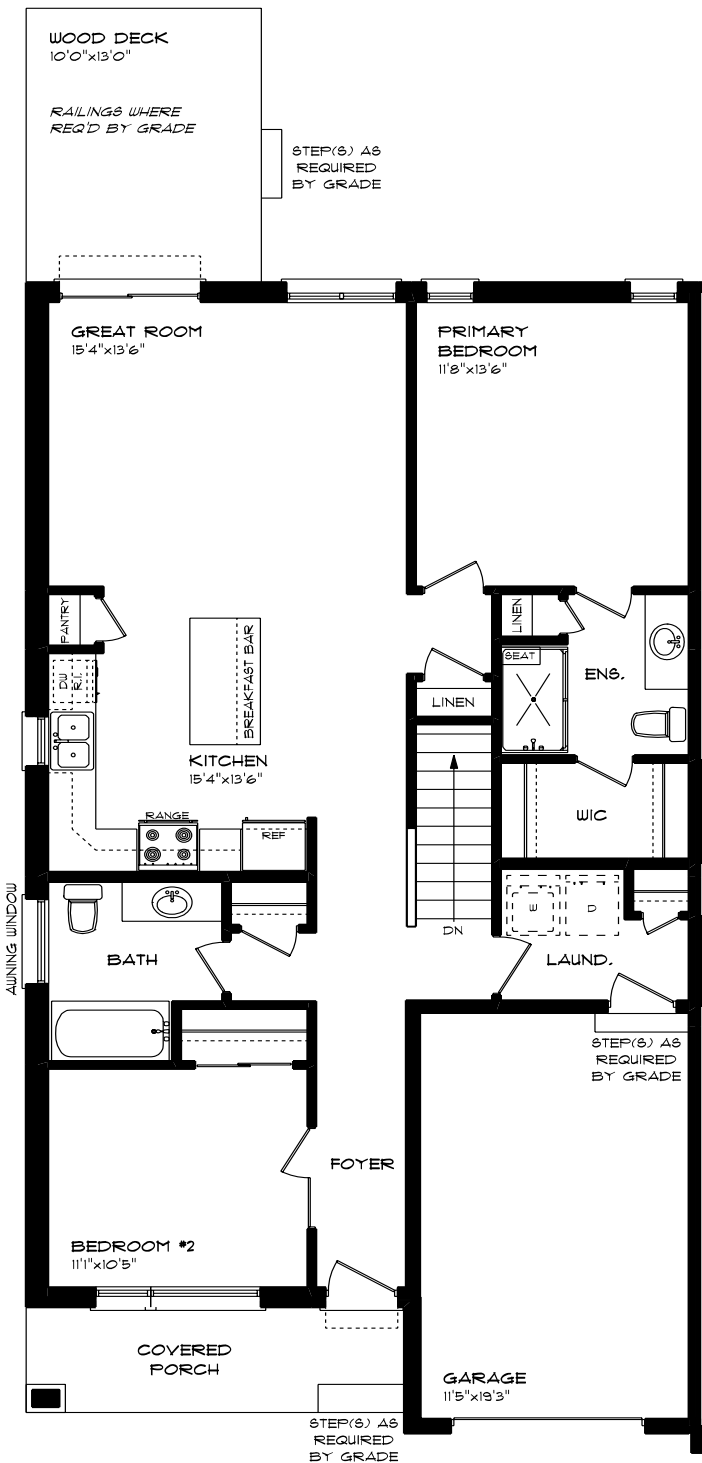
6 Finch Street | Tillsonburg ON

MAIN FLOOR

1,225 sq ft

features

- QUARTZ COUNTERTOPS
- PAINTED KITCHEN BACKSPLASH
- LUXURY VINYL PLANK FLOORING
- KITCHEN ISLAND
- 9' MAIN FLOOR CEILING
- SINGLE CAR GARAGE
- KITCHEN PANTRY



ROLLING MEADOWS

6 Finch Street | Tillsonburg ON

LOWER LEVEL

Unfinished

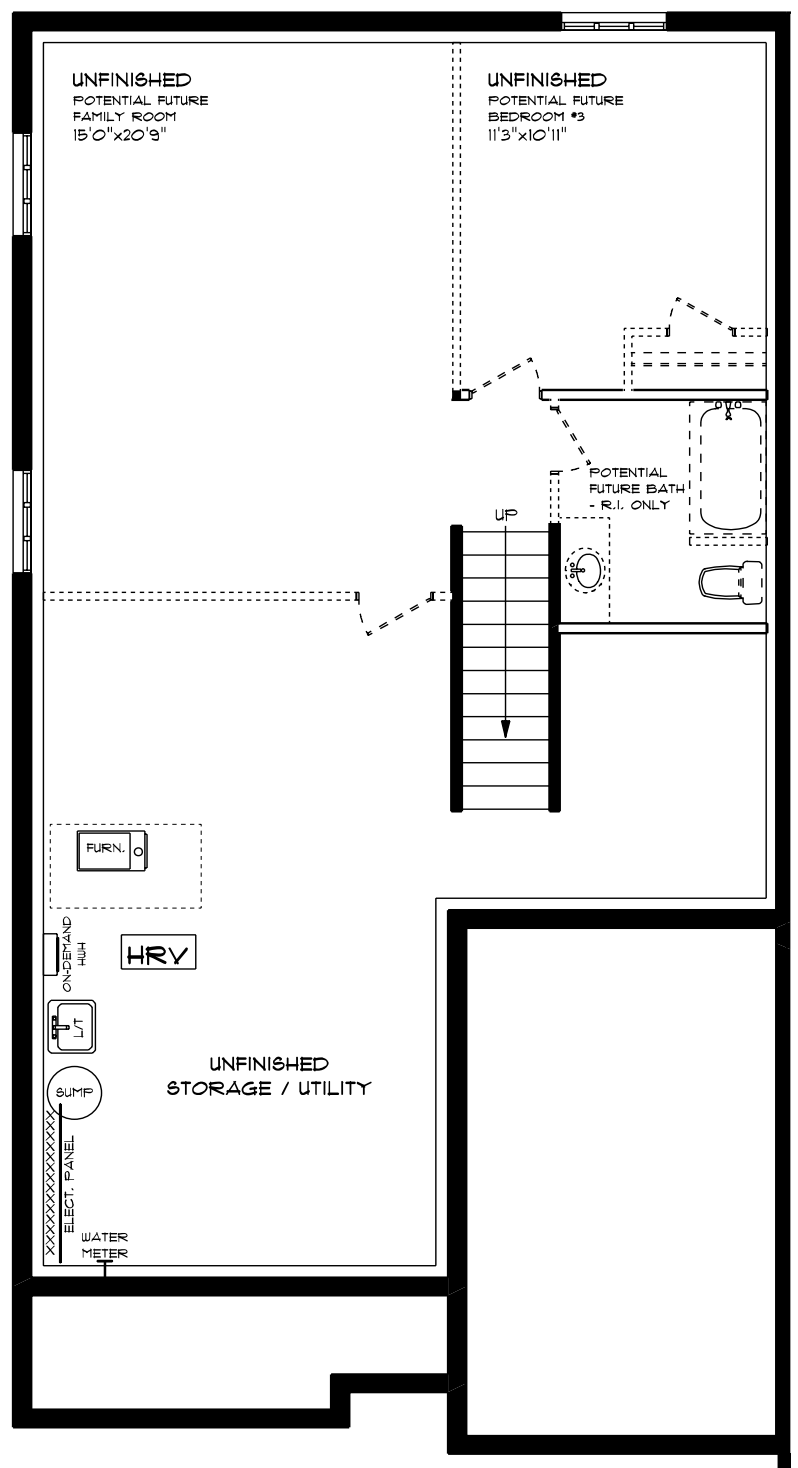
features

AIR CONDITIONING

GAS FURNACE WITH HRV

HUMIDIFIER

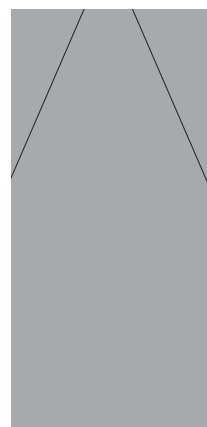
NEW HOME WARRANTY



ROLLING MEADOWS

6 Finch Street | Tillsonburg ON

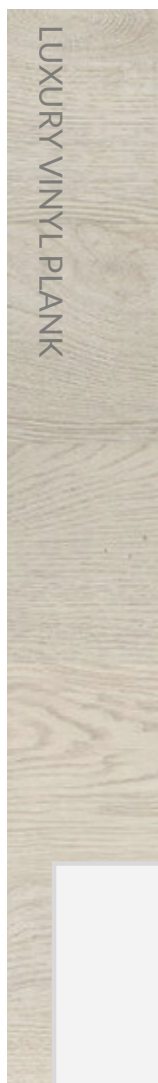
INTERIOR FINISHES



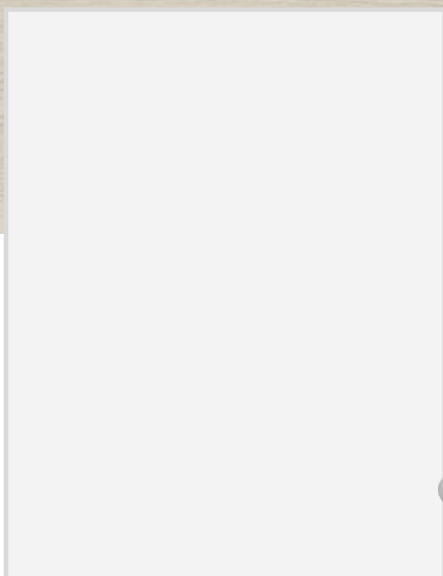
QUARTZ KITCHEN COUNTERTOPS



LUXURY VINYL PLANK



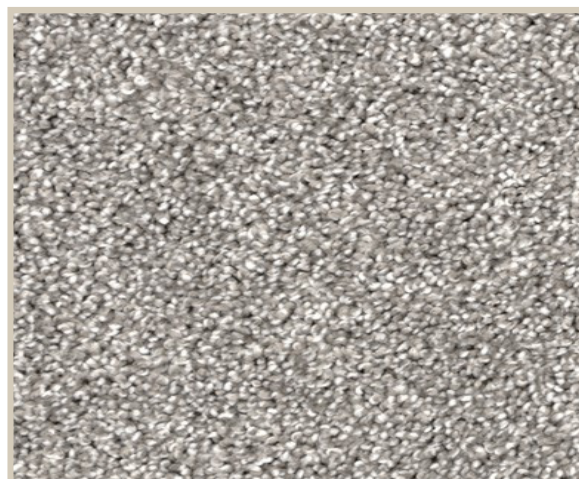
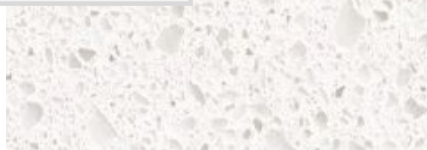
MELAMINE KITCHEN CABINETS



MELAMINE VANITY CABINETS



LAMINATE VANITY COUNTERTOPS



CARPET