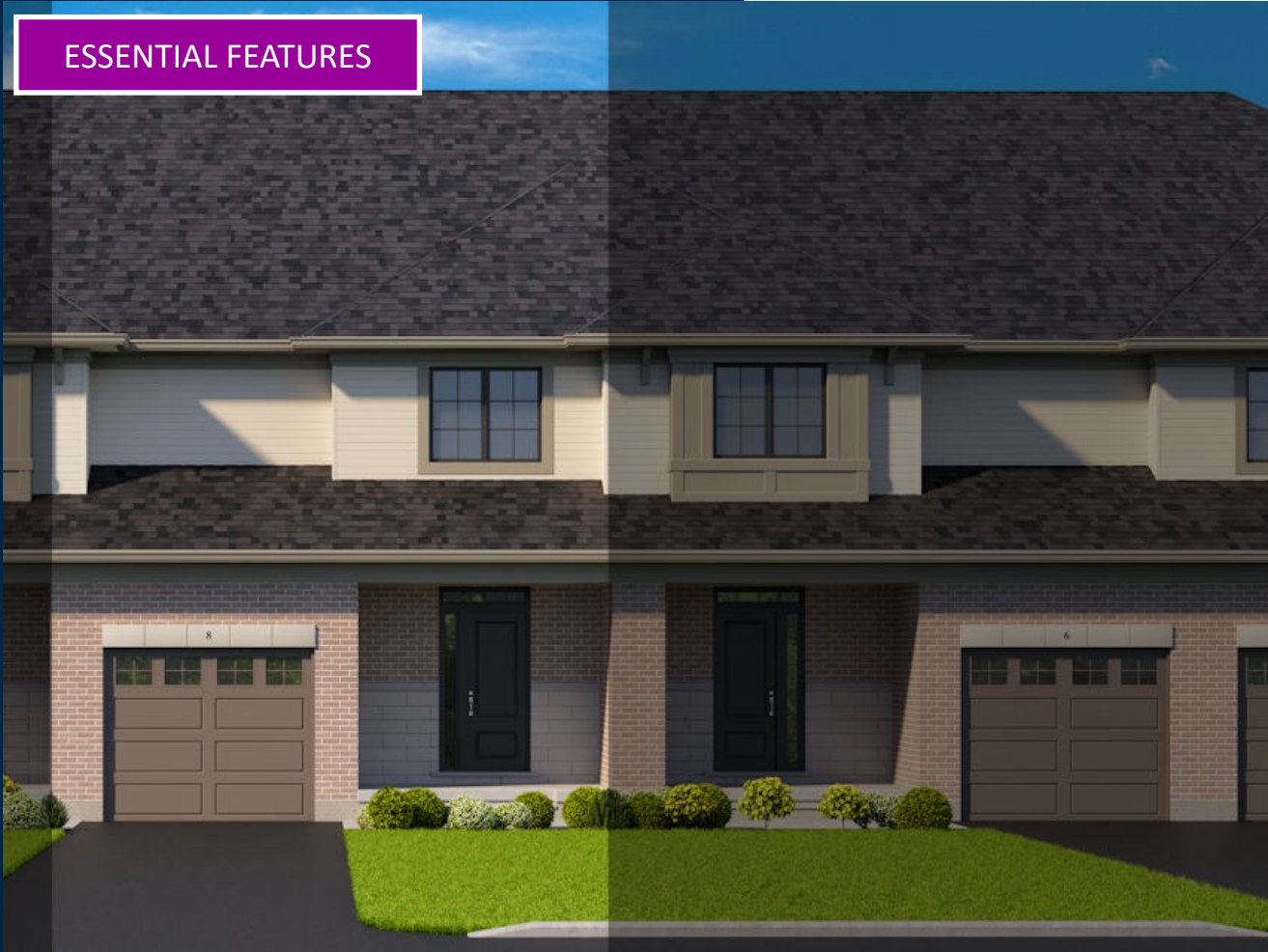


# T O W N H O M E

## ESSENTIAL FEATURES



## 8 CANARY ST

NORTHCREST TOWNS, TILLSONBURG

### THE DETAILS

PRICE	\$ 545,000
CLOSING DATE	January 7, 2026
LOT NUMBER	101C PHASE 2
BEDROOMS	3
BATHS	2.5
SQFT	1552
GARAGE	1
MODEL	2 STOREY TOWN

**HAYHOE™**  
—HOMES—



### SALES PROFESSIONAL

EMMA SMITH

519.409.1474

[emma.smith@hayhoehomes.com](mailto:emma.smith@hayhoehomes.com)

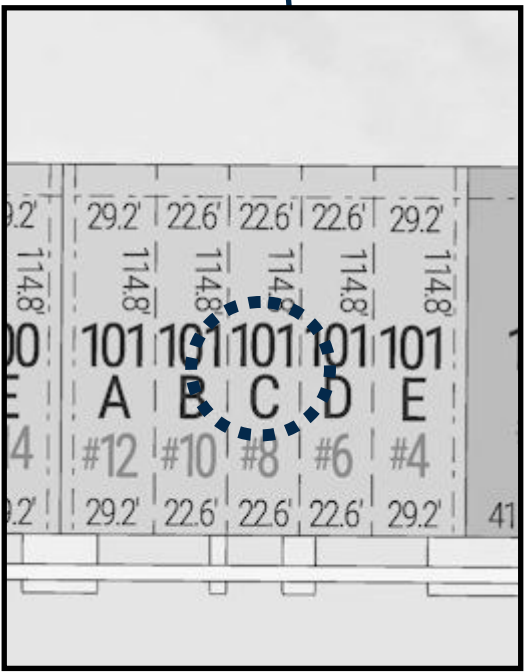
# SITE PLAN



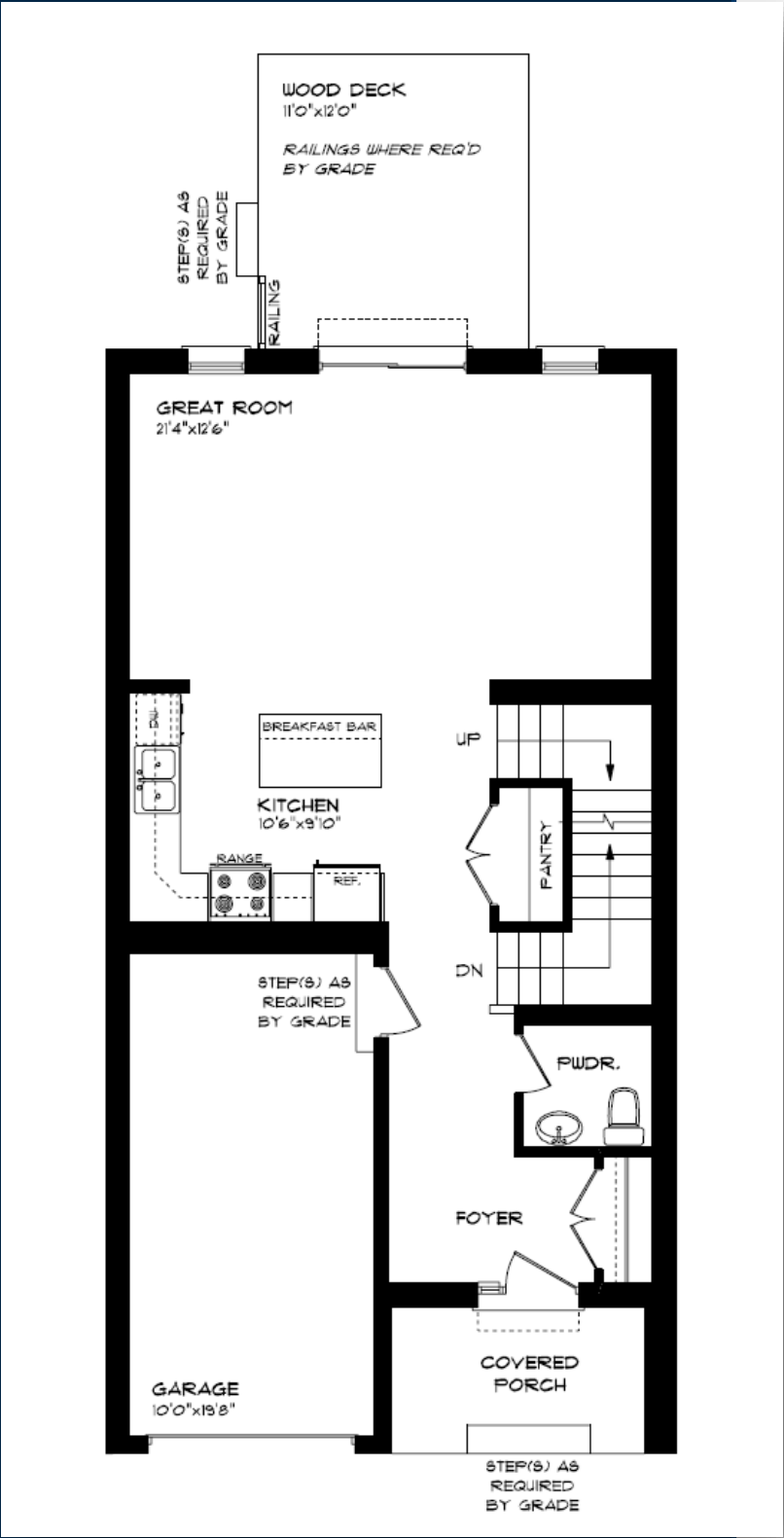
## 8 CANARY ST

### EXTERIOR FEATURES:

- KEYLESS ENTRY
- TREATED WOOD DECK
- ASPHALT DRIVEWAY
- WALKING TRAILS



# MAIN FLOOR



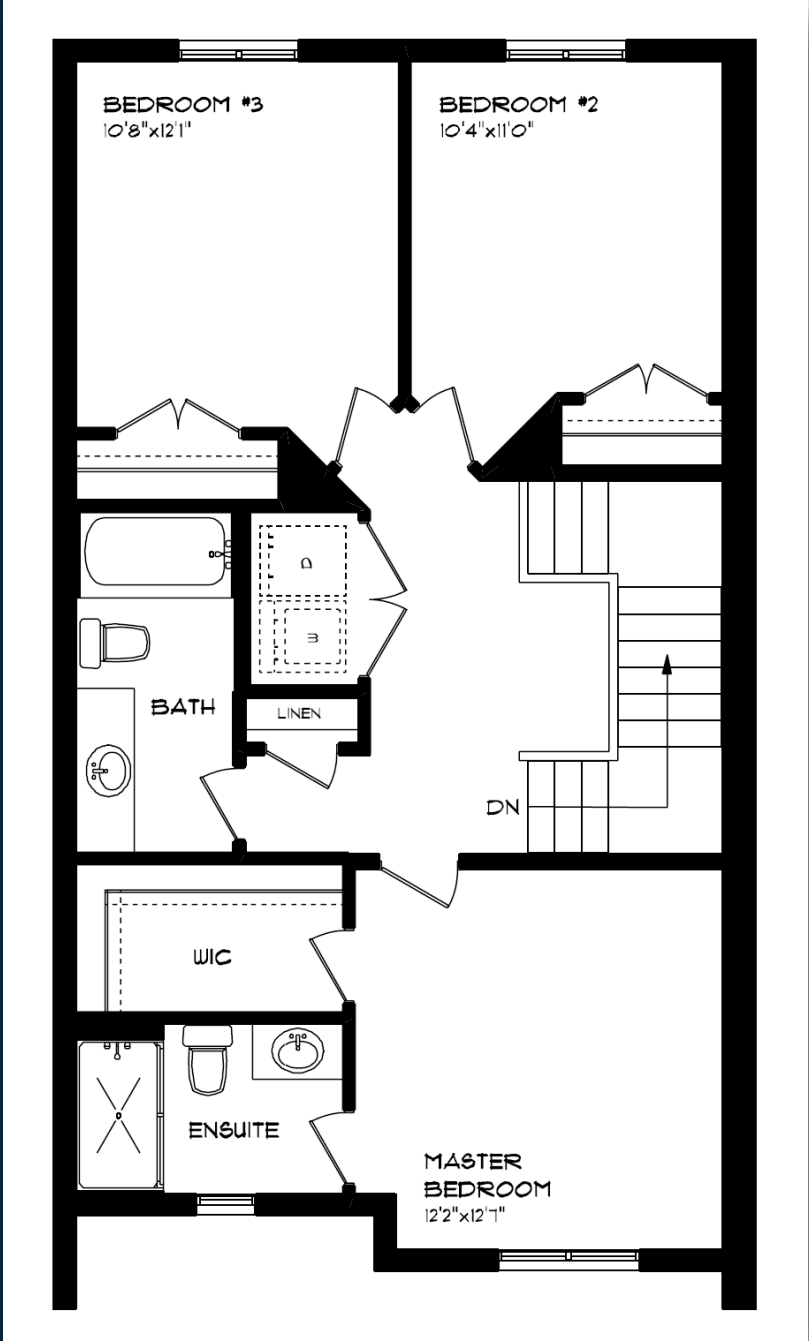
8 CANARY ST, TILLSONBURG

- SINGLE CAR GARAGE
- KITCHEN ISLAND
- VINYL PLANK FLOORING
- QUARTZ COUNTERTOPS
- UNDERMOUNT SINK

MAIN FLOOR:  
APPROX 725 SQFT



# SECOND FLOOR



8 CANARY ST, TILLSONBURG

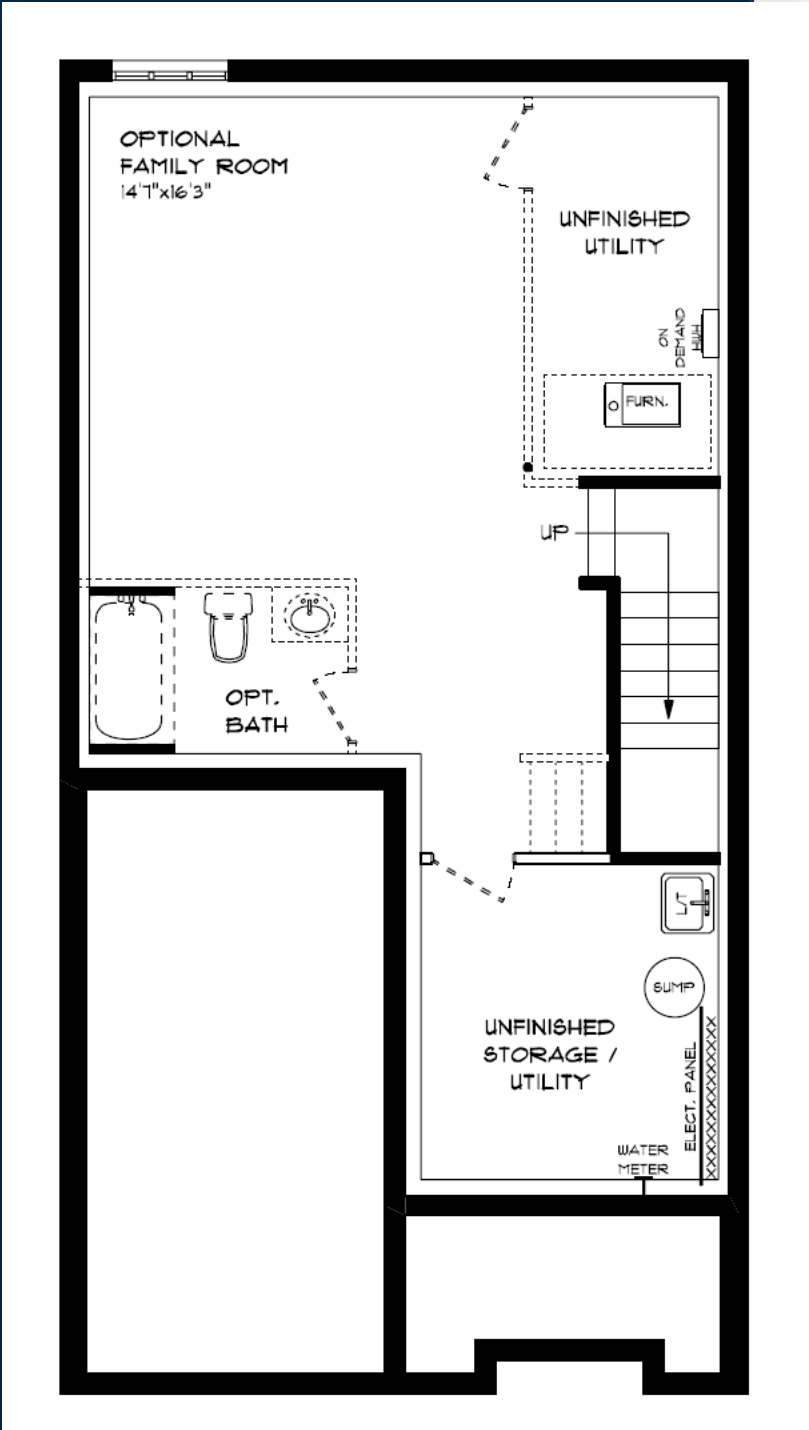
- SECOND FLOOR LAUNDRY
- PROFESSIONALLY DESIGNED
- CARPET FLOORING
- VINYL PLANK FLOORING
- WALK-IN CLOSET

SECOND FLOOR:  
APPROX 827 SQFT



# BASEMENT

8 CANARY ST, TILLSONBURG



AIR CONDITIONING  
GAS FURNACE WITH HRV  
HUMIDIFIER  
NEW HOME WARRANTY

BASEMENT:  
UNFINISHED

**HAYHOE™**  
— HOMES —

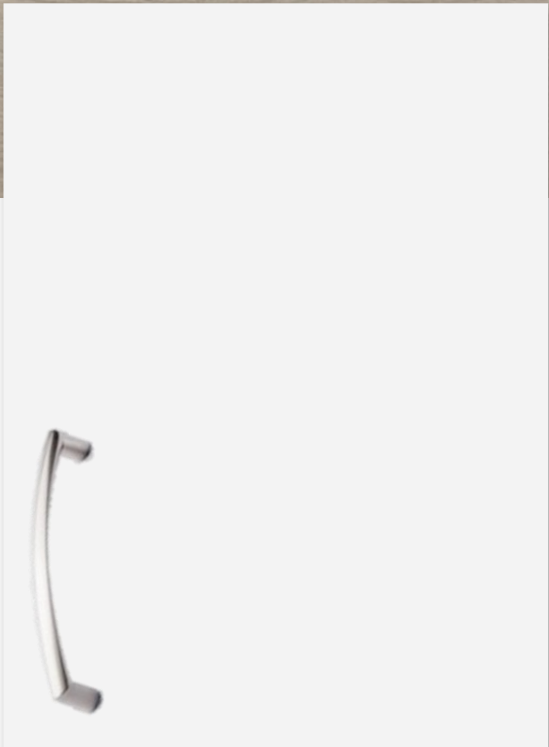


# INTERIOR FINISHES

8 CANARY ST



LUXURY VINYL PLANK



ISLAND PENDANTS



FOYER  
FIXTURE



**HAYHOE™**  
— HOMES —

KITCHEN  
CABINETRY

# INTERIOR FINISHES

## 8 CANARY ST

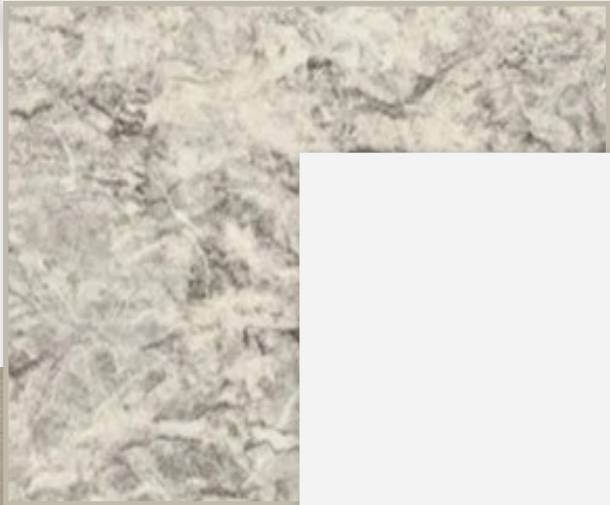
INTERIOR DOOR STYLE



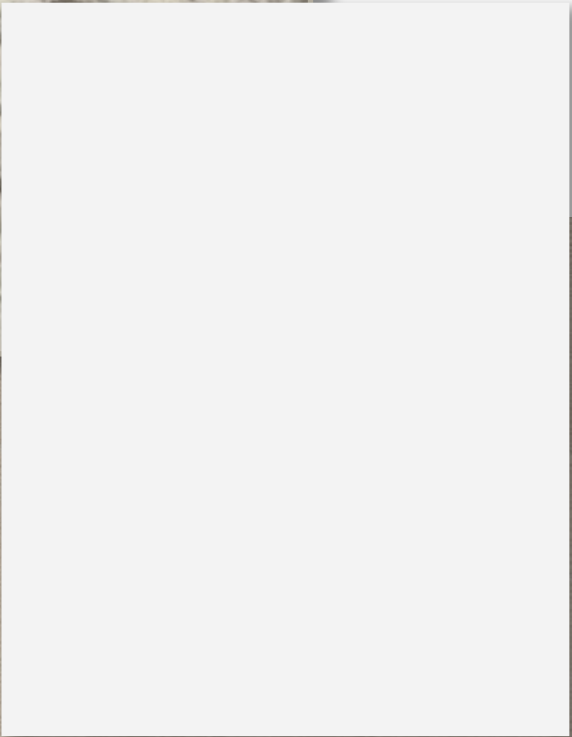
CARPET



BATHROOM  
COUNTERTOP



BATHROOM  
CABINETRY



LUXURY VINYL PLANK

