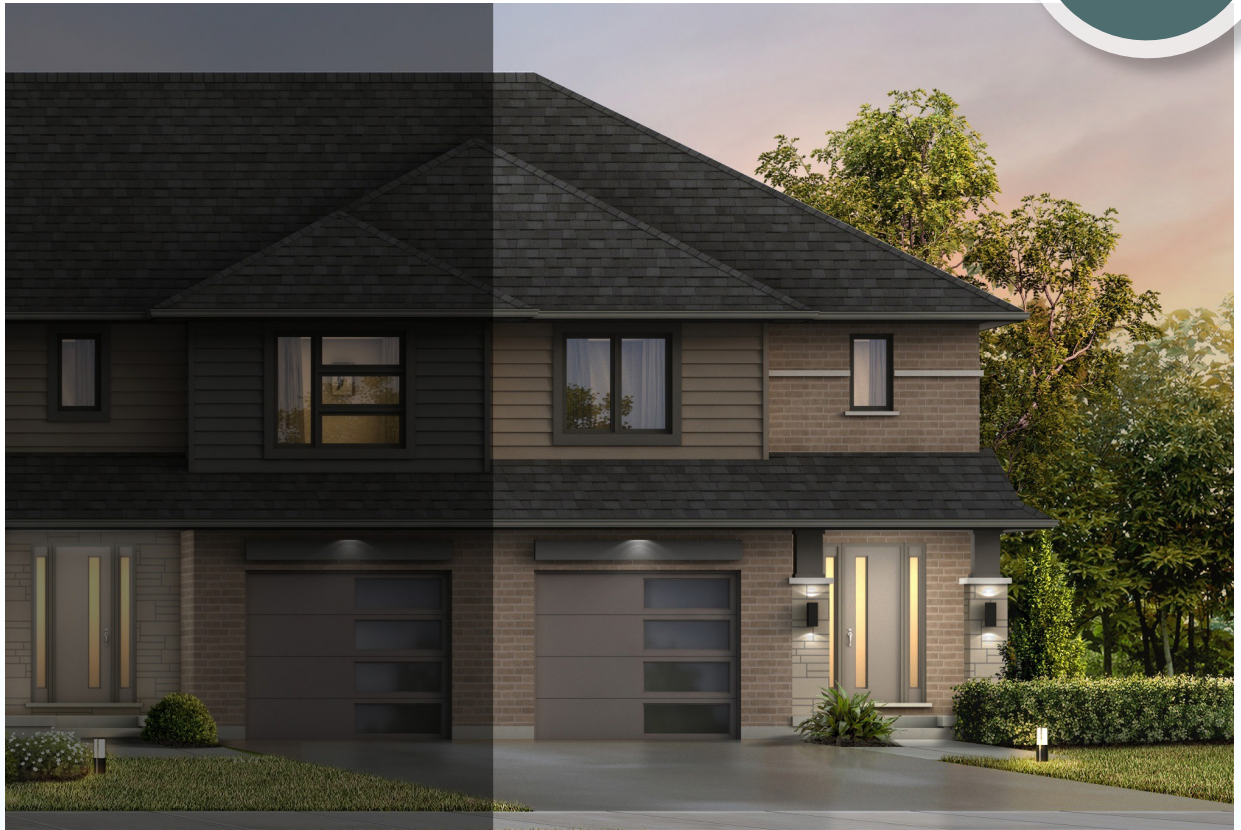


# ROLLING MEADOWS

TOWNHOME

63 Woodcock Drive | Tillsonburg ON

PREMIUM  
SPECS



## THE DETAILS

PRICE	\$586,500
CLOSING DATE	February 6, 2026
LOT NUMBER	10F
BEDROOMS	4
BATHS	3.5
GARAGE	1
DRIVEWAY	12' 4"
SQ FT	2,451
MODEL	Tifton

Laura Babcock SALES PROFESSIONAL

519.520.0539 | [laura.babcock@hayhoehomes.com](mailto:laura.babcock@hayhoehomes.com)



[WWW.HAYHOEHOMES.COM](http://WWW.HAYHOEHOMES.COM)

Price, products, colours & features are subject to change without notice. E. & O. E. JUNE 3, 2025

**HAYHOE**<sup>™</sup>  
HOMES

# ROLLING MEADOWS

## SITE PLAN

63 Woodcock Drive | Tillsonburg ON



### exterior features

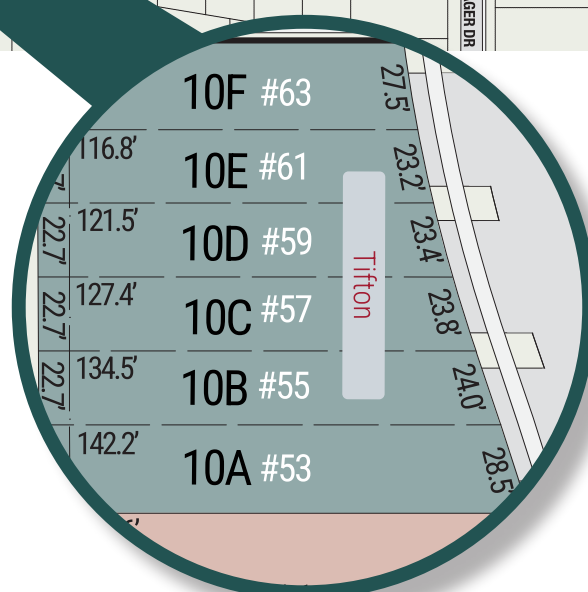
KEYLESS ENTRY

TREATED WOOD DECK

BBQ GAS LINE

ASPHALT DRIVEWAY

WALKING TRAILS



# ROLLING MEADOWS

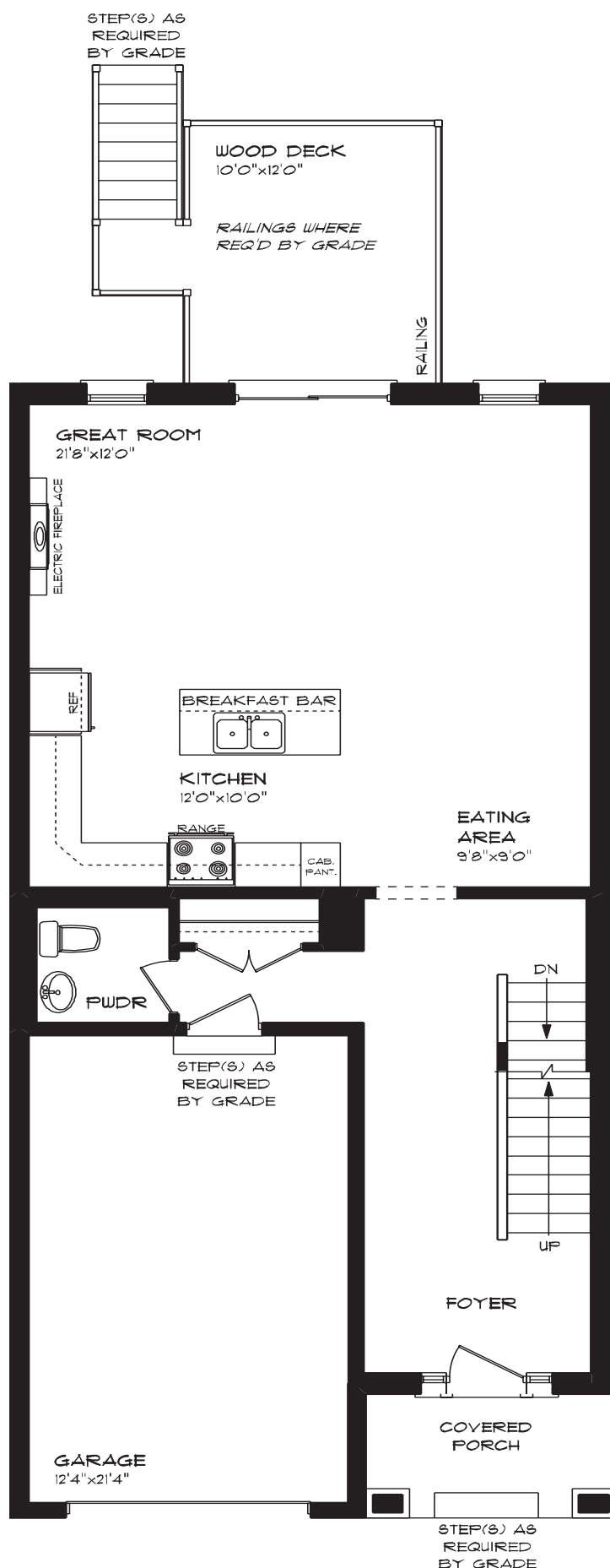
63 Woodcock Drive | Tillsonburg ON

## MAIN FLOOR

852 sq ft

### features

- QUARTZ COUNTERTOPS
- KITCHEN BACKSPLASH
- LUXURY VINYL PLANK FLOORING
- KITCHEN ISLAND
- 8' MAIN FLOOR CEILING
- SINGLE CAR GARAGE
- KITCHEN PANTRY





# ROLLING MEADOWS

63 Woodcock Drive | Tillsonburg ON

## SECOND FLOOR

1006 sq ft

### features

PROFESSIONALLY DESIGNED

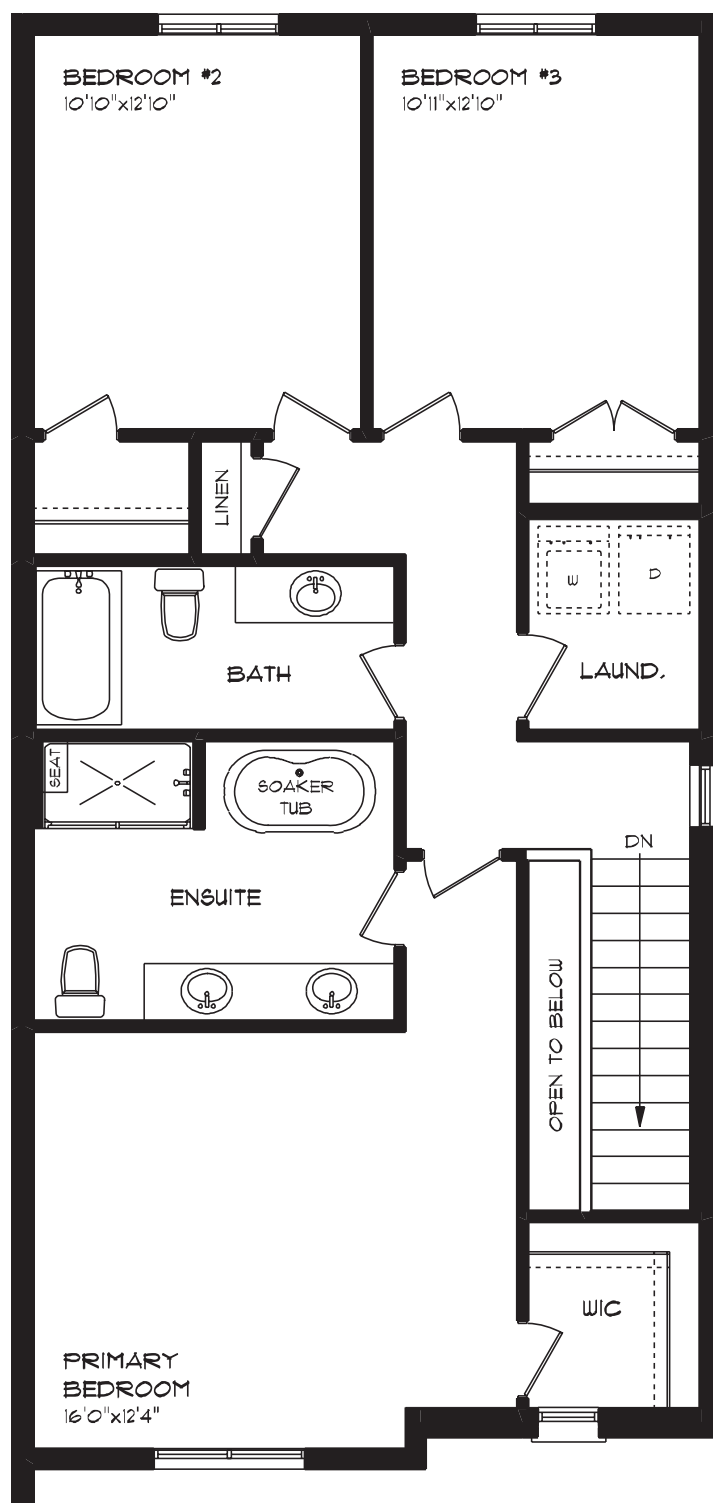
LUXURY VINYL PLANK FLOORING

CARPET FLOORING

SECOND FLOOR LAUNDRY

ENSUITE BATH

WALK-IN CLOSET



# ROLLING MEADOWS

63 Woodcock Drive | Tillsonburg ON

## LOWER LEVEL

601 sq ft

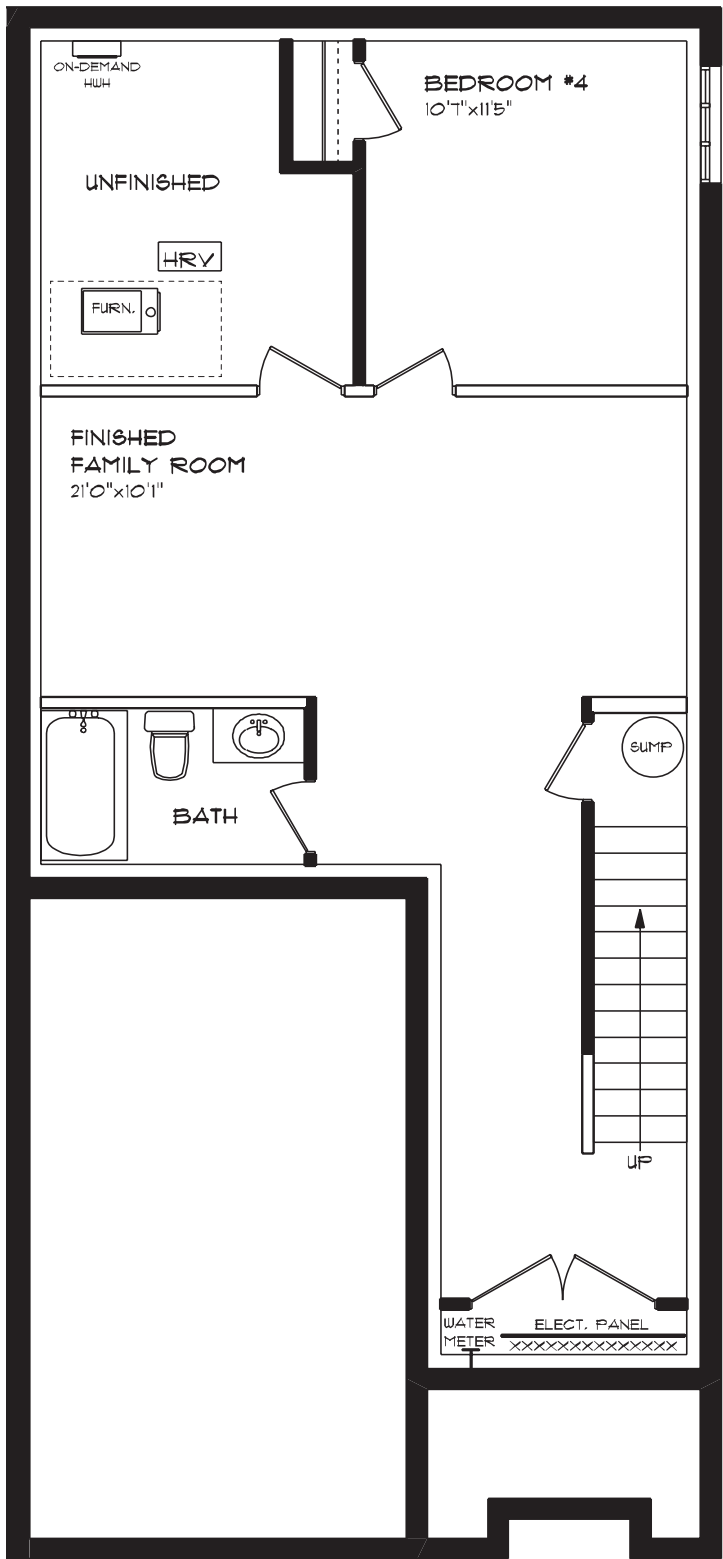
### features

AIR CONDITIONING

GAS FURNACE WITH HRV

HUMIDIFIER

NEW HOME WARRANTY



# ROLLING MEADOWS

63 Woodcock Drive | Tillsonburg ON

## INTERIOR FINISHES



KITCHEN BACKSPLASH



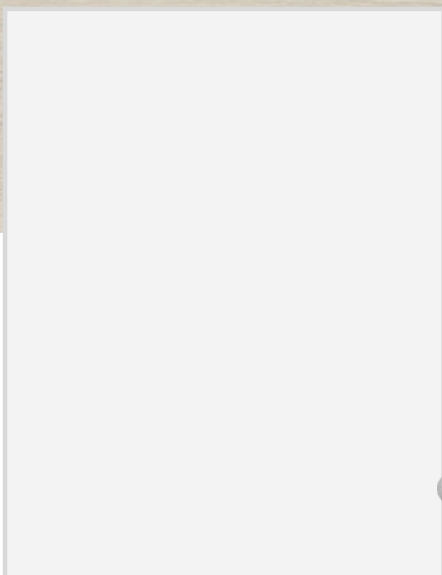
QUARTZ KITCHEN COUNTERTOPS



LUXURY VINYL PLANK



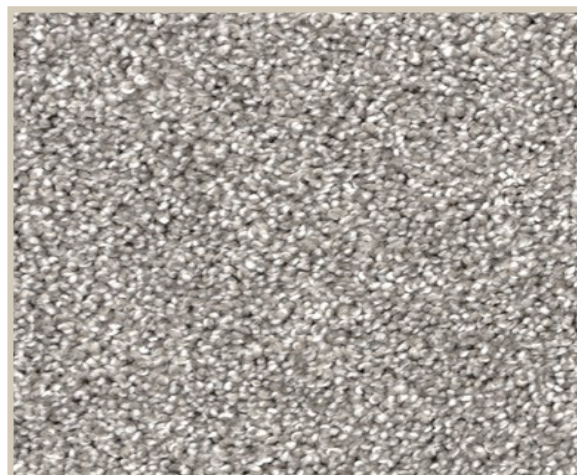
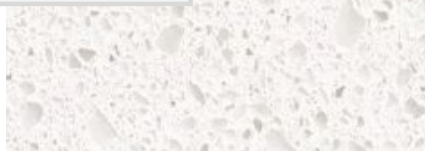
MELAMINE KITCHEN CABINETRY



MELAMINE VANITY CABINETRY



LAMINATE VANITY COUNTERTOPS



CARPET