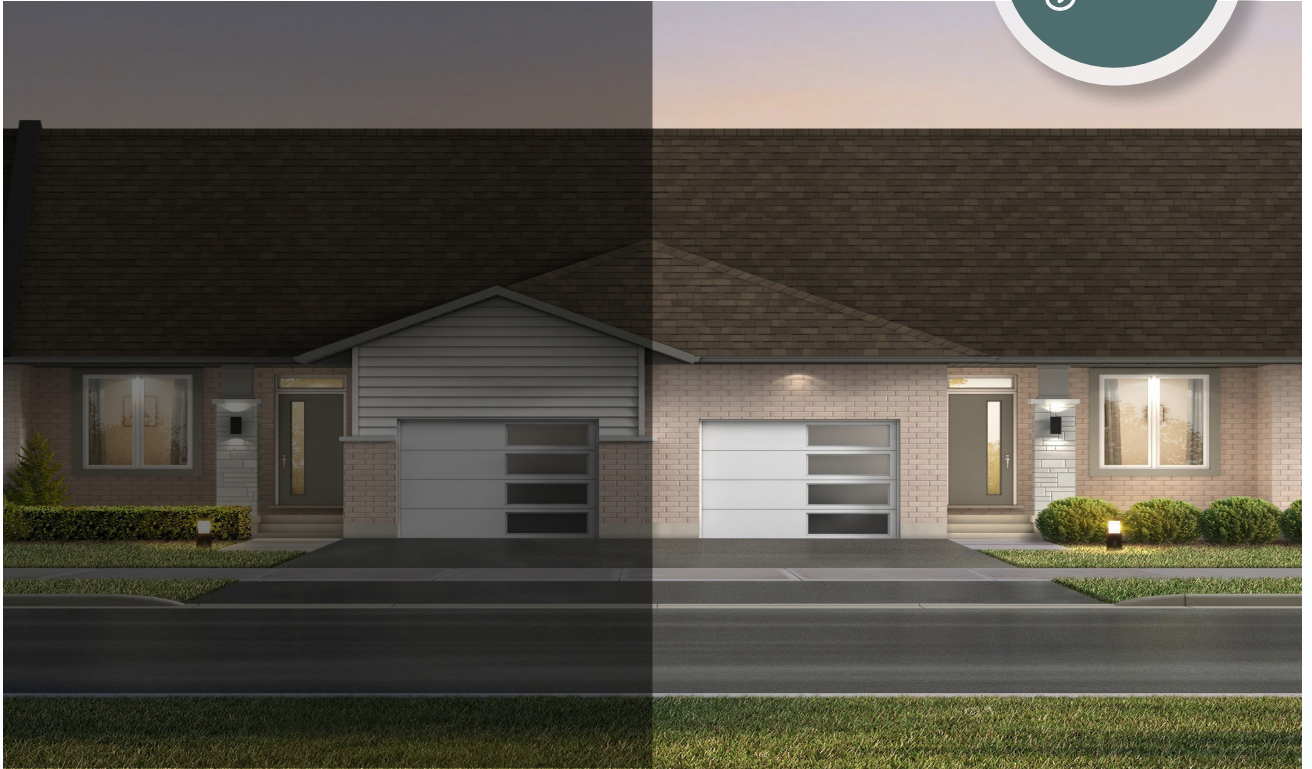


ROLLING MEADOWS

TOWNHOME

12 Finch Street | Tillsonburg ON

ESSENTIAL
& SPECS



THE DETAILS

PRICE	\$514,000
CLOSING DATE	January 29, 2026
LOT NUMBER	42D
BEDROOMS	2
BATHS	2
GARAGE	1
DRIVEWAY	11'3"
SQ FT	1,132
MODEL	Arbor

Laura Babcock SALES PROFESSIONAL

519.520.0539 | laura.babcock@hayhoehomes.com



WWW.HAYHOEHOMES.COM

Price, products, colours & features are subject to change without notice. E. & O. E. JUNE 3, 2025

HAYHOETM
HOMES

ROLLING MEADOWS

SITE PLAN

12 Finch Street | Tillsonburg ON



exterior features

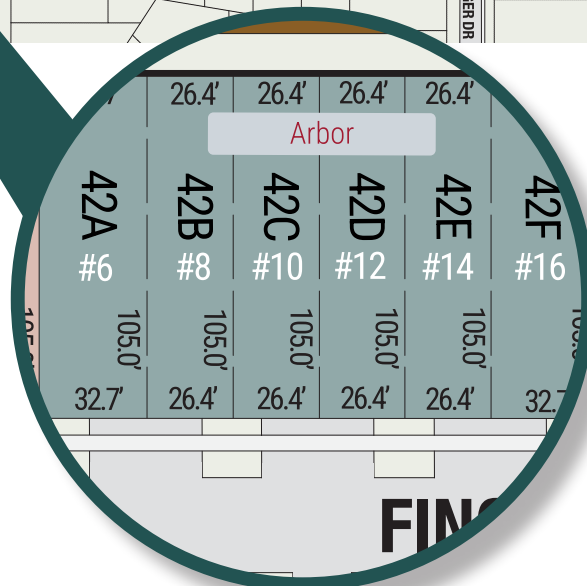
KEYLESS ENTRY

TREATED WOOD DECK

BBQ GAS LINE

ASPHALT DRIVEWAY

WALKING TRAILS



ROLLING MEADOWS

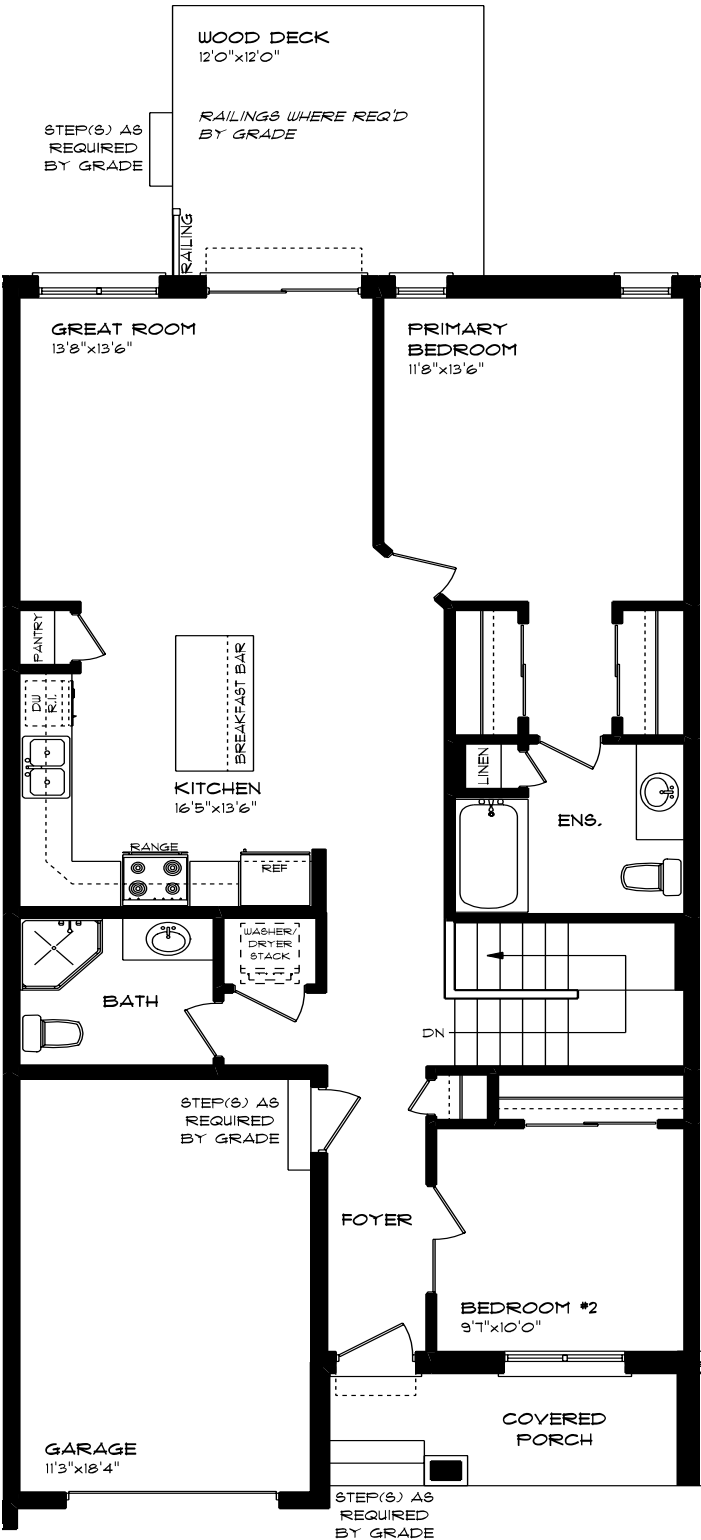
12 Finch Street | Tillsonburg ON

MAIN FLOOR

1,132 sq ft

features

- QUARTZ COUNTERTOPS
- PAINTED KITCHEN BACKSPLASH
- LUXURY VINYL PLANK FLOORING
- KITCHEN ISLAND
- 9' MAIN FLOOR CEILING
- SINGLE CAR GARAGE
- KITCHEN PANTRY



ROLLING MEADOWS

12 Finch Street | Tillsonburg ON

LOWER LEVEL

Unfinished

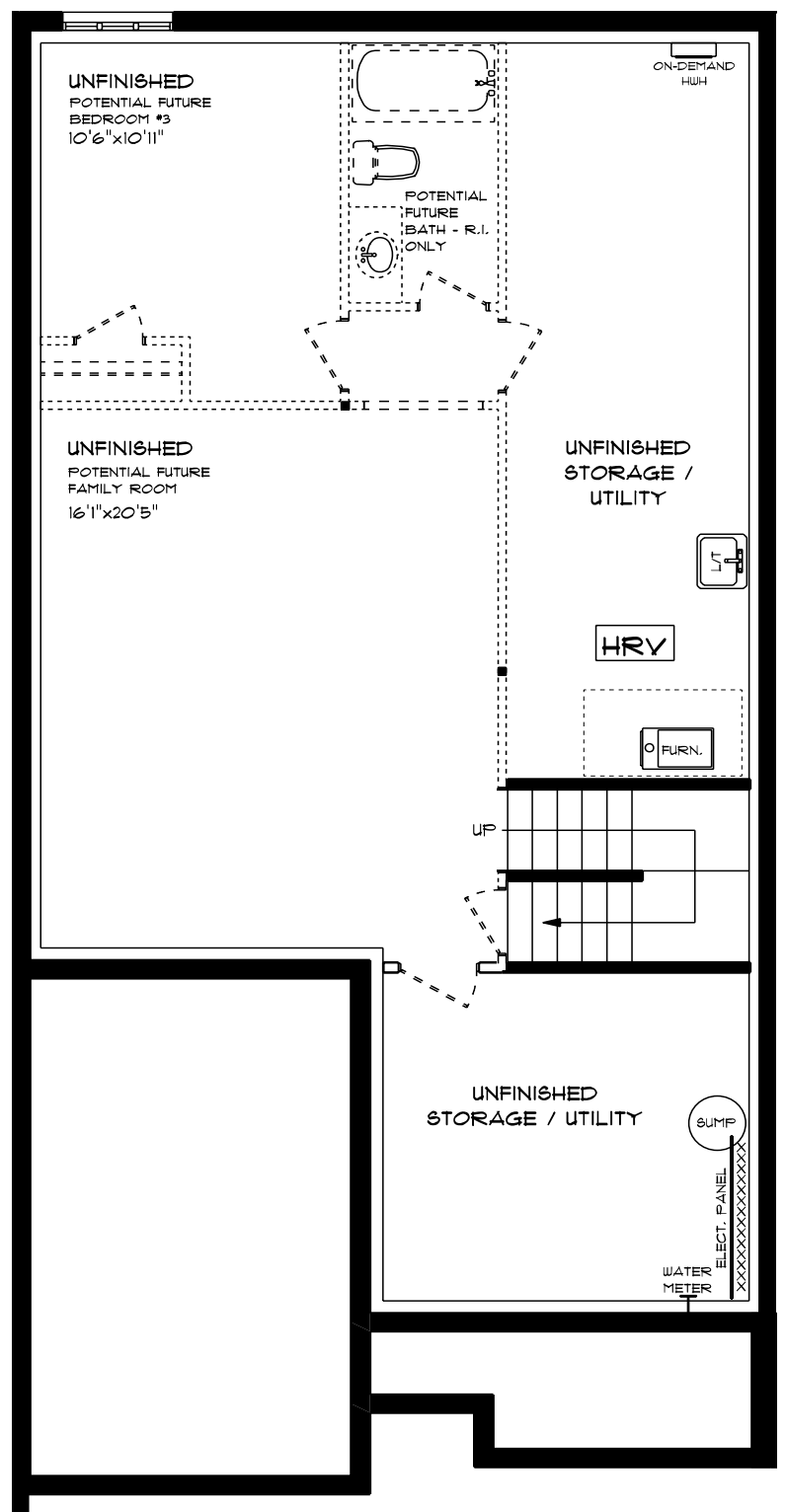
features

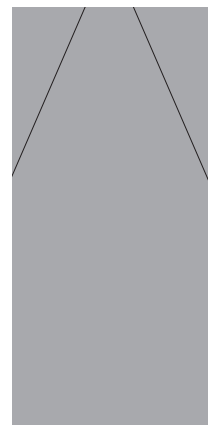
AIR CONDITIONING

GAS FURNACE WITH HRV

HUMIDIFIER

NEW HOME WARRANTY

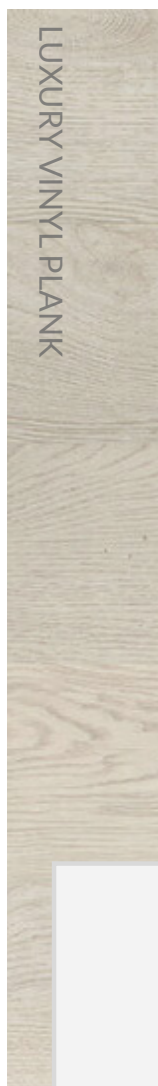




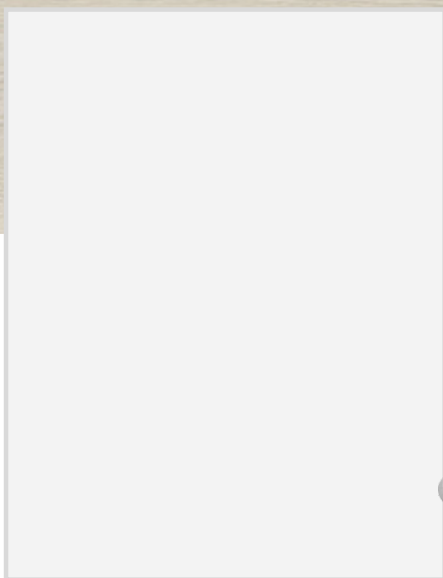
QUARTZ KITCHEN COUNTERTOPS



LUXURY VINYL PLANK



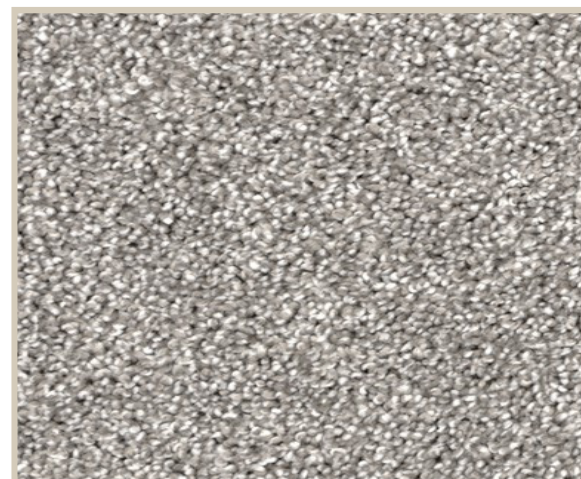
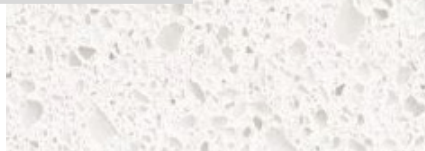
MELAMINE KITCHEN CABINETS



MELAMINE VANITY CABINETS



LAMINATE VANITY COUNTERTOPS



CARPET