

WILLOW RUN

57 WILLOW DRIVE

AYLMER | ONTARIO

TOWNHOME

PREMIUM
SPECS



THE DETAILS

PRICE	\$589,000
CLOSING DATE	May 13, 2025
LOT NUMBER	1B
BEDROOMS	3
BATHS	2.5
GARAGE	2
DRIVEWAY	19'
SQ FT	1,972
MODEL	Townhome

Emma Smith SALES PROFESSIONAL

519.409.1474 | emma.smith@hayhoehomes.com



WWW.HAYHOEHOMES.COM

Price, products, colours & features are subject to change without notice. E. & O. E. DATE MAR 2025

HAYHOETM
HOMES

WILLOW RUN

SITE PLAN

57 WILLOW DRIVE | AYLMER ON



exterior features

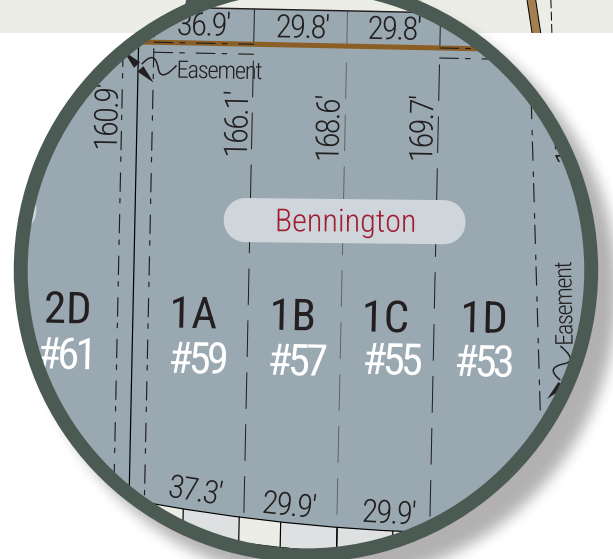
KEYLESS ENTRY

TREATED WOOD DECK

BBQ GAS LINE

ASPHALT DRIVEWAY

WALKING TRAILS



WILLOW RUN

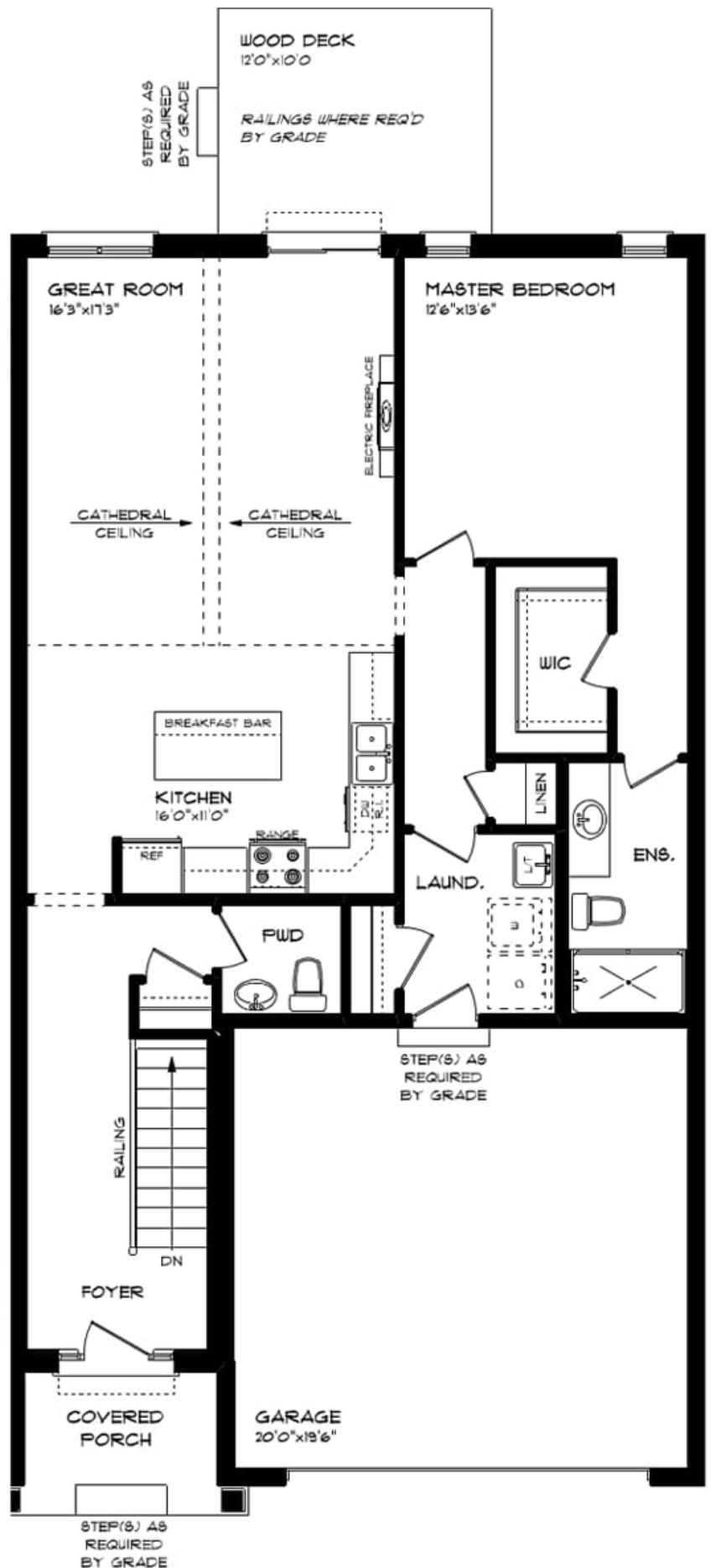
57 WILLOW DRIVE

MAIN FLOOR

1,180 sq ft

features

MAIN FLOOR LAUNDRY
QUARTZ COUNTERTOPS
KITCHEN BACKSPLASH
DOUBLE CAR GARAGE
ELECTRIC FIREPLACE



WILLOW RUN

57 WILLOW DRIVE

LOWER LEVEL

792 sq ft

features

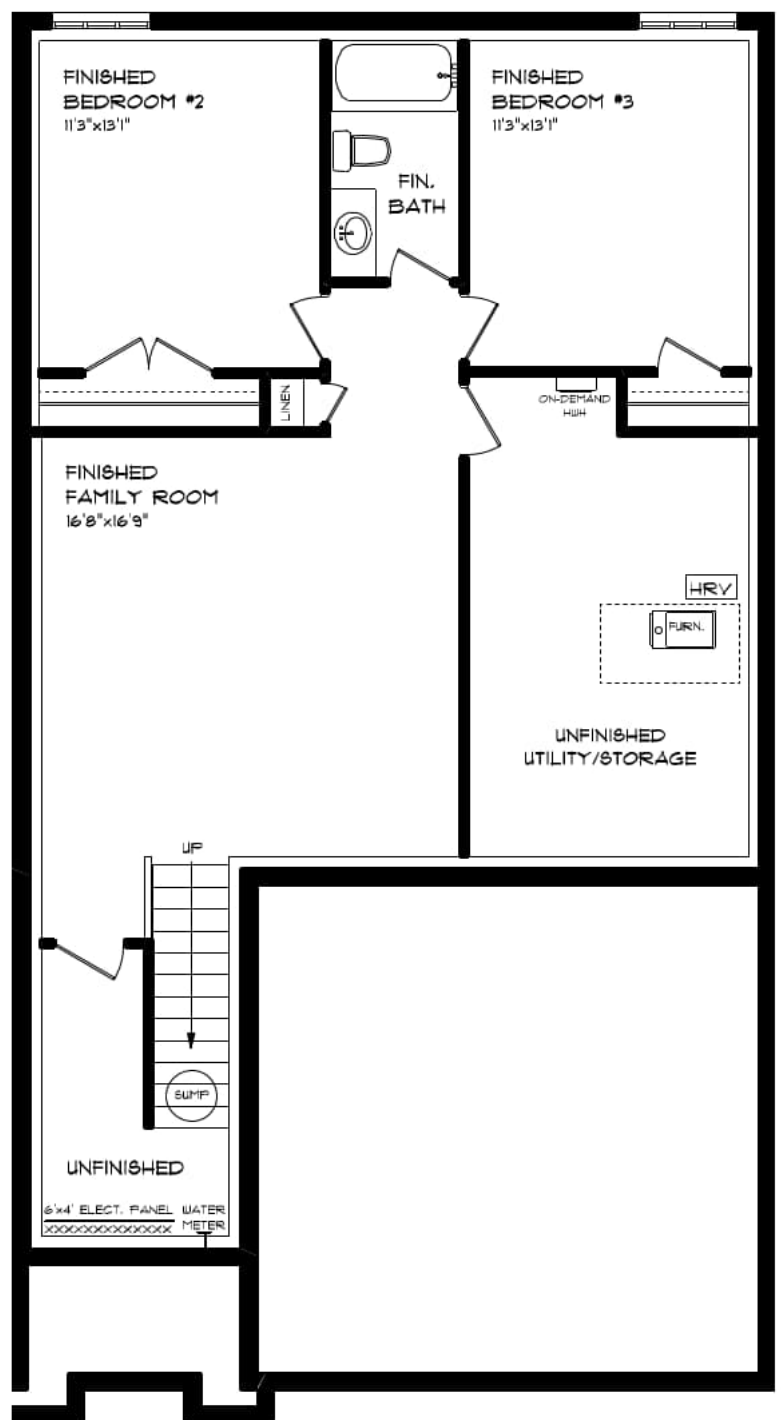
CARPET FLOORING

AIR CONDITIONING

GAS FURNACE WITH HRV

HUMIDIFIER

NEW HOME WARRANTY



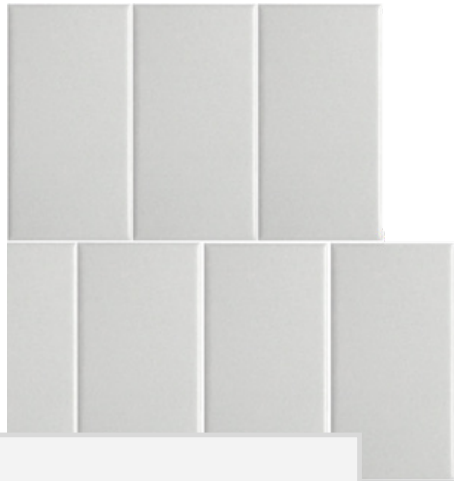
WILLOW RUN

57 WILLOW DRIVE

INTERIOR FINISHES



KITCHEN BACKSPLASH



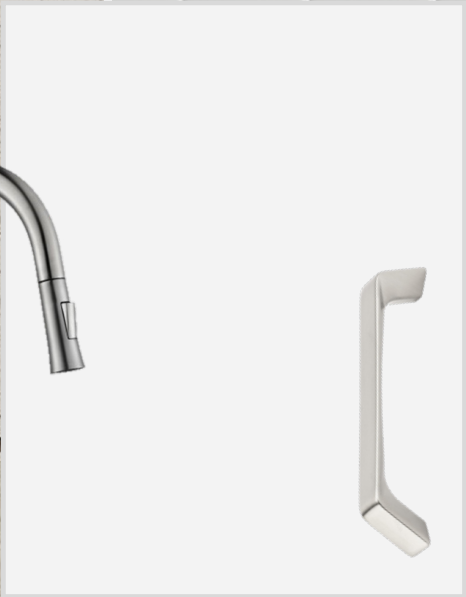
QUARTZ KITCHEN COUNTERTOPS



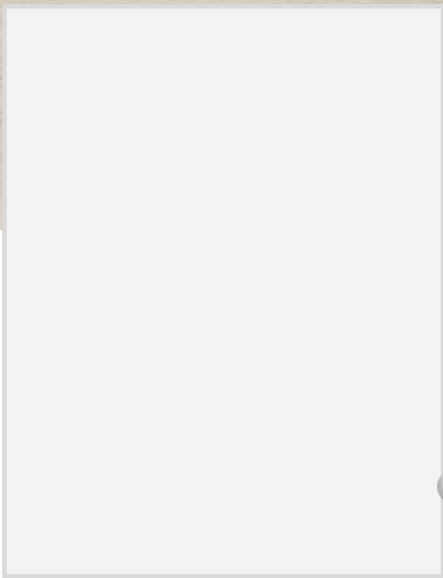
LUXURY VINYL PLANK



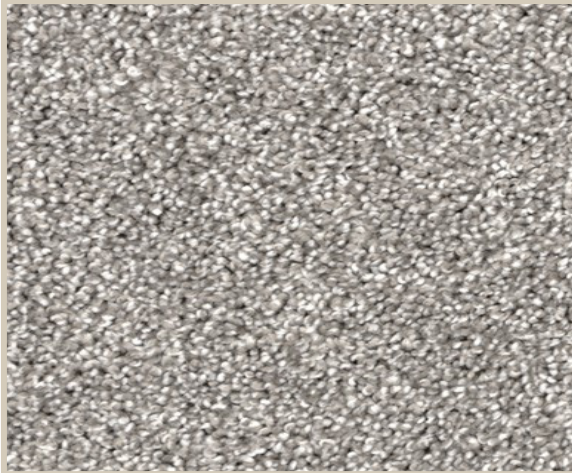
MELAMINE KITCHEN
CABINETRY



MELAMINE VANITY
CABINETRY



LAMINATE VANITY
COUNTERTOPS



CARPET