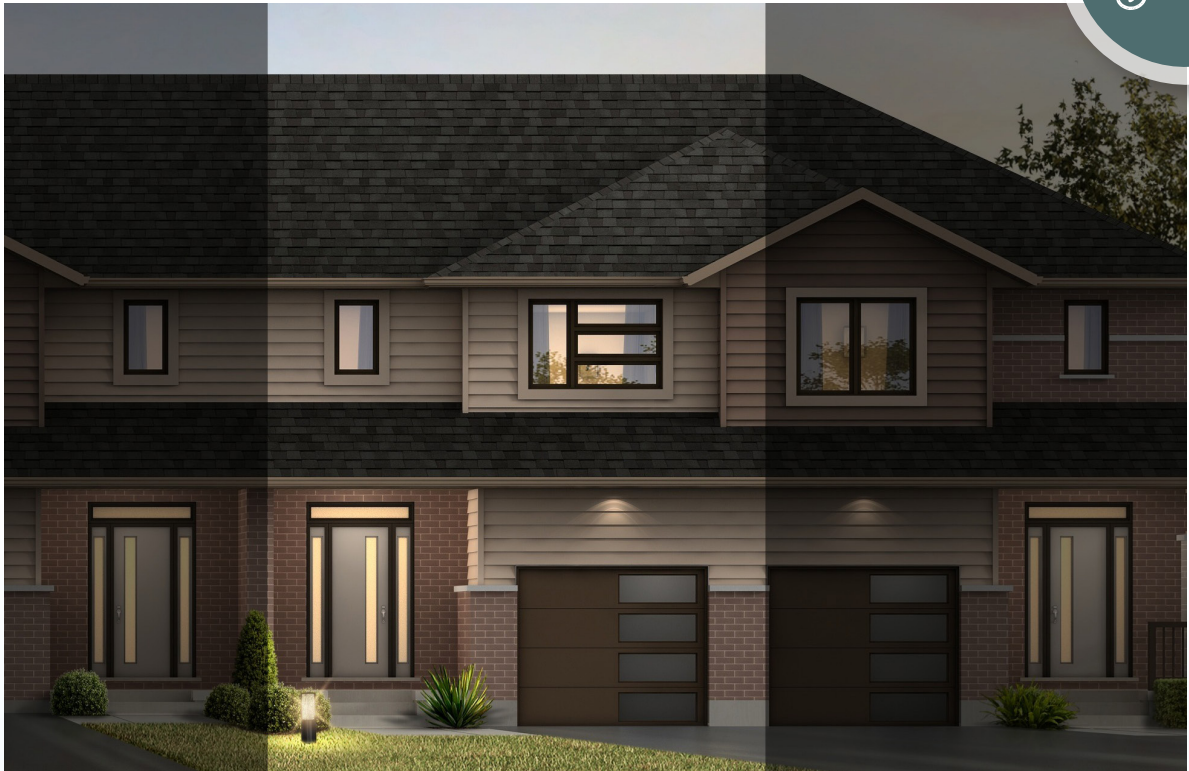


ROLLING MEADOWS

TOWNHOME

66 Woodcock Drive | Tillsonburg ON

ESSENTIAL
SPECS



THE DETAILS

PRICE	\$514,000
CLOSING DATE	April 9, 2026
LOT NUMBER	45E
BEDROOMS	3
BATHS	2.5
GARAGE	1
DRIVEWAY	17'
SQ FT	1,620
MODEL	Shelton

Laura Babcock SALES PROFESSIONAL

519.520.0539 | laura.babcock@hayhoehomes.com



WWW.HAYHOEHOMES.COM

Price, products, colours & features are subject to change without notice. E. & O. E. JULY 24, 2025

HAYHOETM
HOMES

ROLLING MEADOWS

SITE PLAN

66 Woodcock Drive | Tillsonburg ON



exterior features

KEYLESS ENTRY

TREATED WOOD DECK

BBQ GAS LINE

ASPHALT DRIVEWAY

WALKING TRAILS

106.6'	#74 45A	25.5'
106.6'	#72 45B	21.0'
106.6'	#70 45C	21.0'
106.6'	#68 45D	21.0'
106.6'	#66 45E	21.0'
106.3'	#64 45F	25.5'
104.6'		25.5'

ROLLING MEADOWS

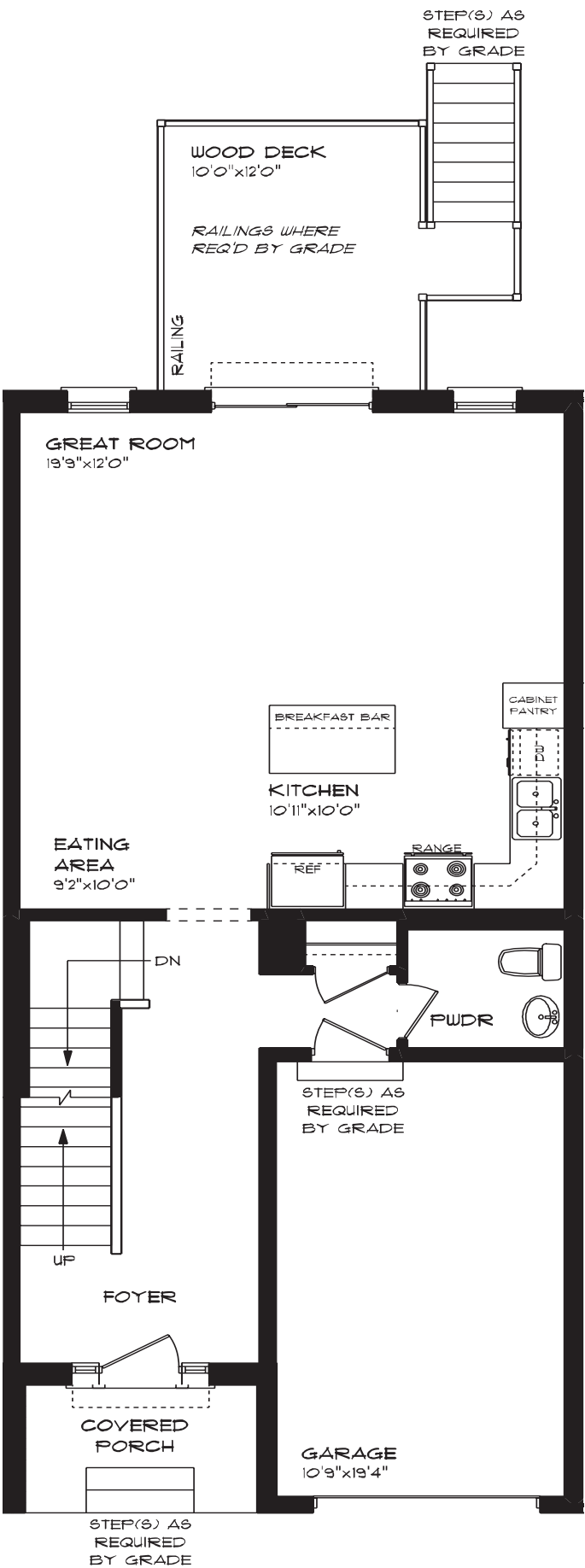
66 Woodcock Drive | Tillsonburg ON

MAIN FLOOR

766 sq ft

features

- QUARTZ COUNTERTOPS
- LUXURY VINYL PLANK FLOORING
- KITCHEN ISLAND
- 9' MAIN FLOOR CEILING
- SINGLE CAR GARAGE
- KITCHEN PANTRY



ROLLING MEADOWS

66 Woodcock Drive | Tillsonburg ON

SECOND FLOOR

854 sq ft

features

PROFESSIONALLY DESIGNED

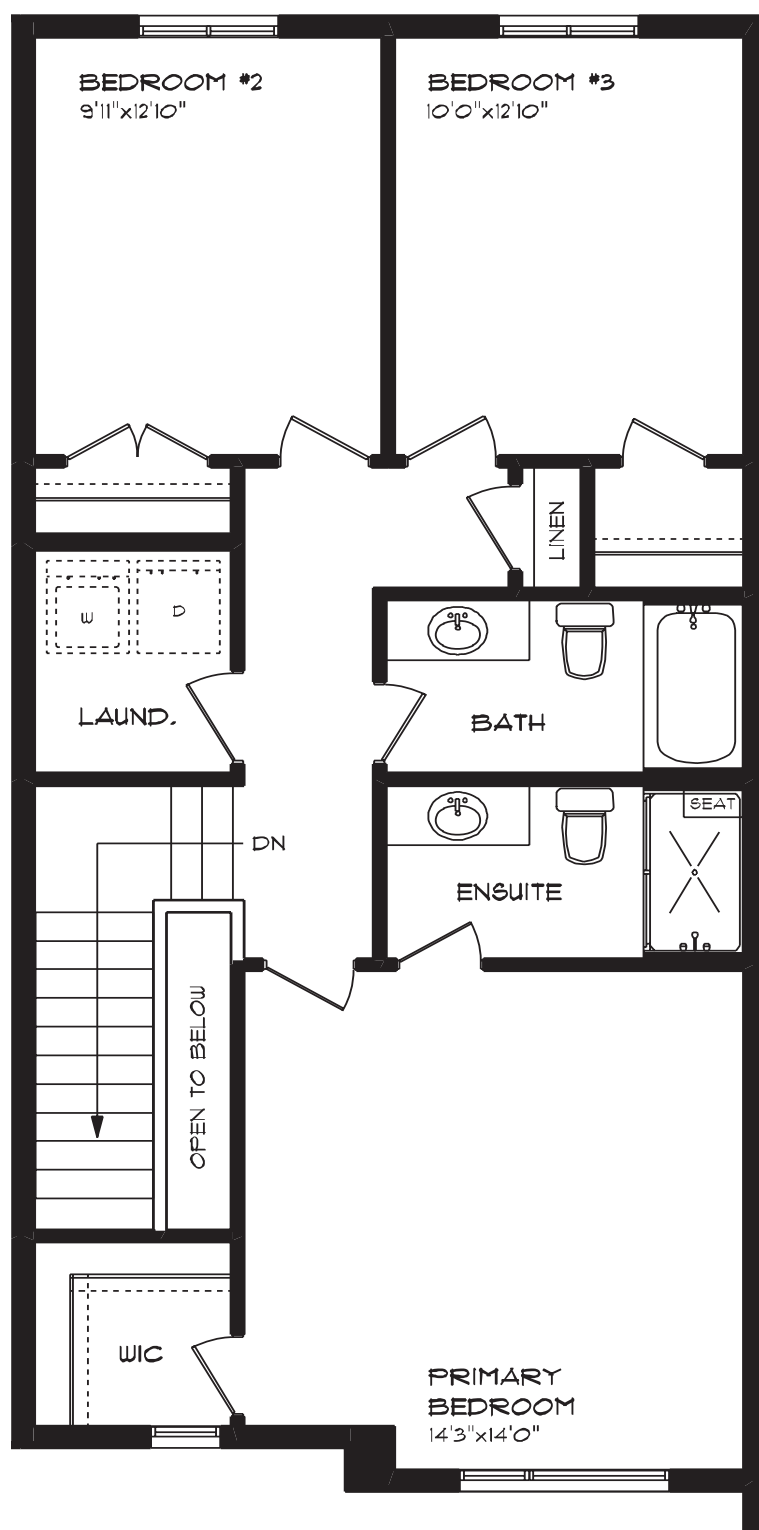
LUXURY VINYL PLANK FLOORING

CARPET FLOORING

SECOND FLOOR LAUNDRY

ENSUITE BATH

WALK-IN CLOSET



ROLLING MEADOWS

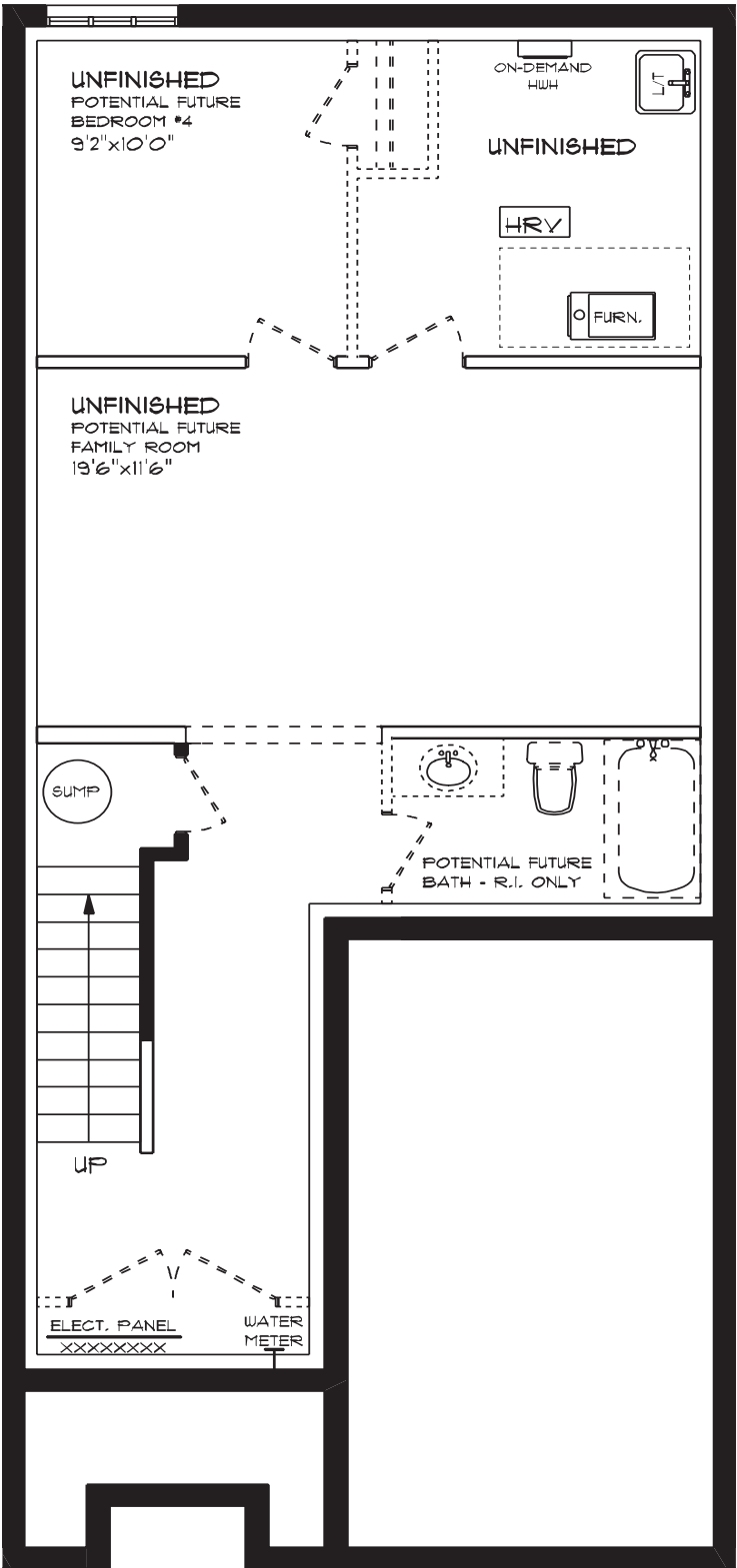
66 Woodcock Drive | Tillsonburg ON

LOWER LEVEL

Unfinished

features

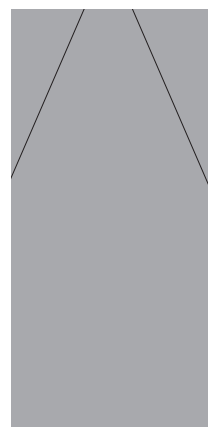
- AIR CONDITIONING
- GAS FURNACE WITH HRV
- HUMIDIFIER
- NEW HOME WARRANTY



ROLLING MEADOWS

66 Woodcock Drive | Tillsonburg ON

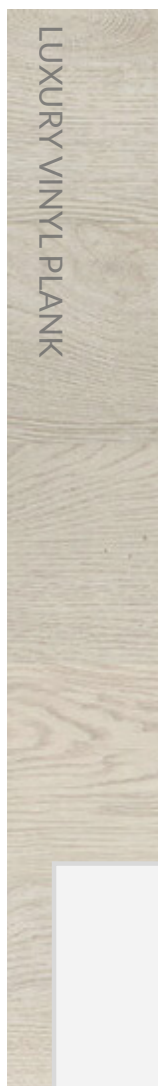
INTERIOR FINISHES



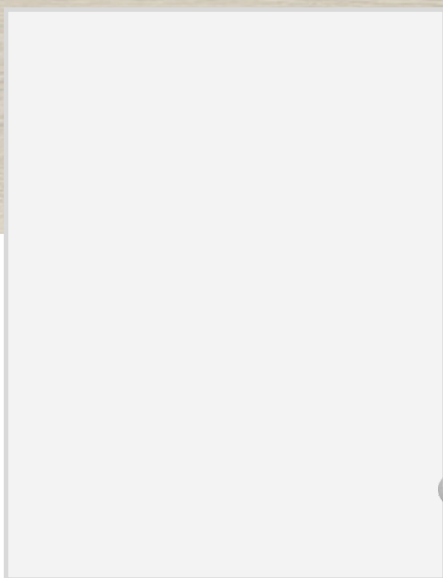
QUARTZ KITCHEN COUNTERTOPS



LUXURY VINYL PLANK



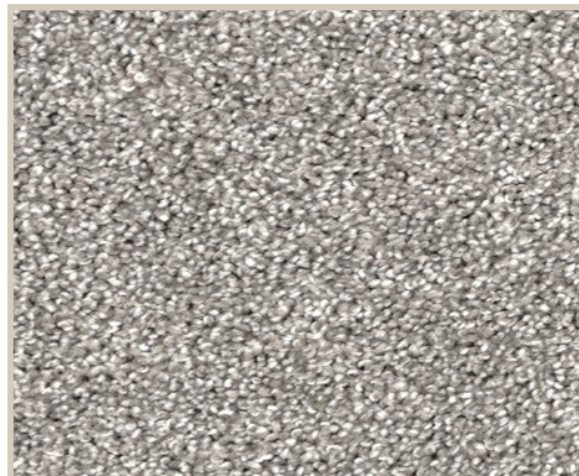
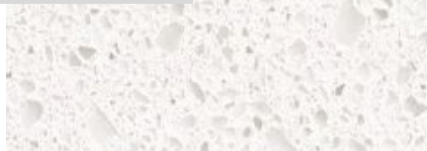
MELAMINE KITCHEN CABINETS



MELAMINE VANITY CABINETS



LAMINATE VANITY COUNTERTOPS



CARPET