

WILLOW RUN

111 WILLOW DRIVE

AYLMER | ONTARIO

TOWNHOME



THE DETAILS

PRICE	\$499,000
CLOSING DATE	January 21, 2026
LOT NUMBER	6C
BEDROOMS	3
BATHS	2.5
GARAGE	1
DRIVEWAY	17'
SQ FT	1,622
MODEL	Townhome

Emma Smith SALES PROFESSIONAL

519.409.1474 | emma.smith@hayhoehomes.com



WWW.HAYHOEHOMES.COM

Price, products, colours & features are subject to change without notice. E. & O. E. MAY 14, 2025

HAYHOE™
— HOMES —

WILLOW RUN

SITE PLAN

111 WILLOW DRIVE | AYLMER ON



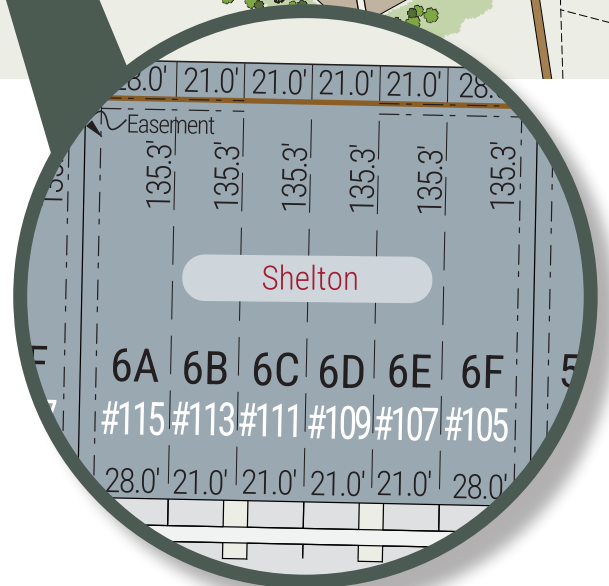
exterior features

KEYLESS ENTRY

TREATED WOOD DECK

ASPHALT DRIVEWAY

WALKING TRAILS



WILLOW RUN

111 WILLOW DRIVE

MAIN FLOOR

765 sq ft

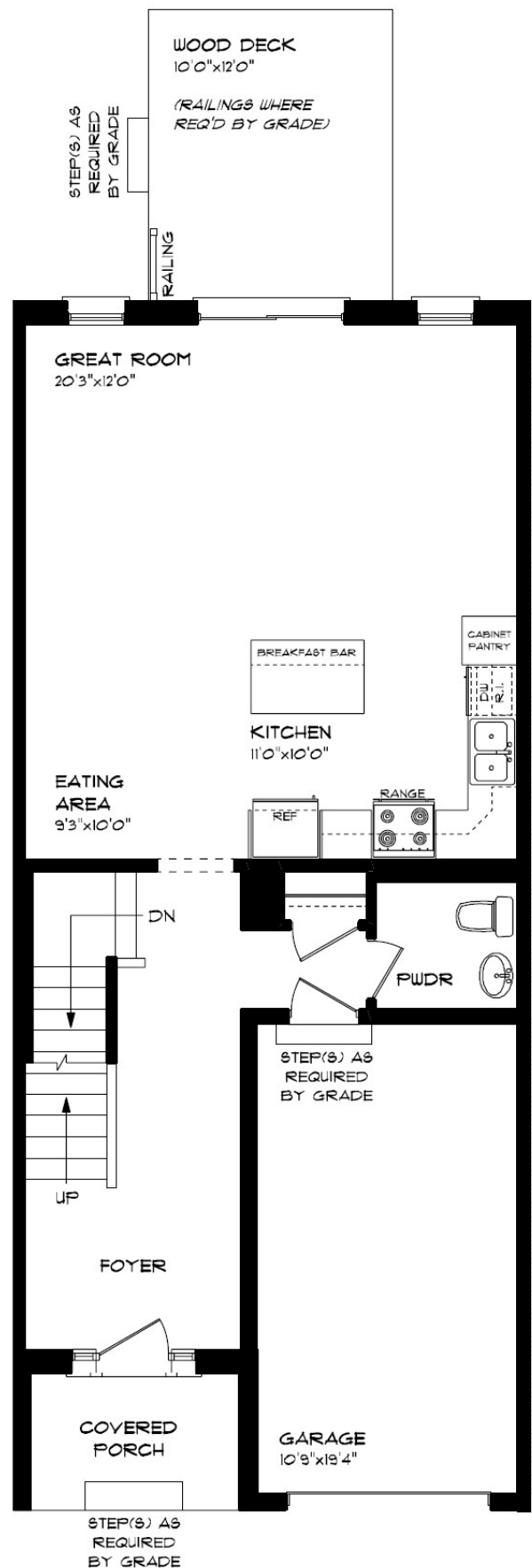
features

QUARTZ COUNTERTOPS

VINYL PLANK FLOORING

KITCHEN ISLAND

8' CEILINGS



WILLOW RUN

111 WILLOW DRIVE

SECOND FLOOR

857 sq ft

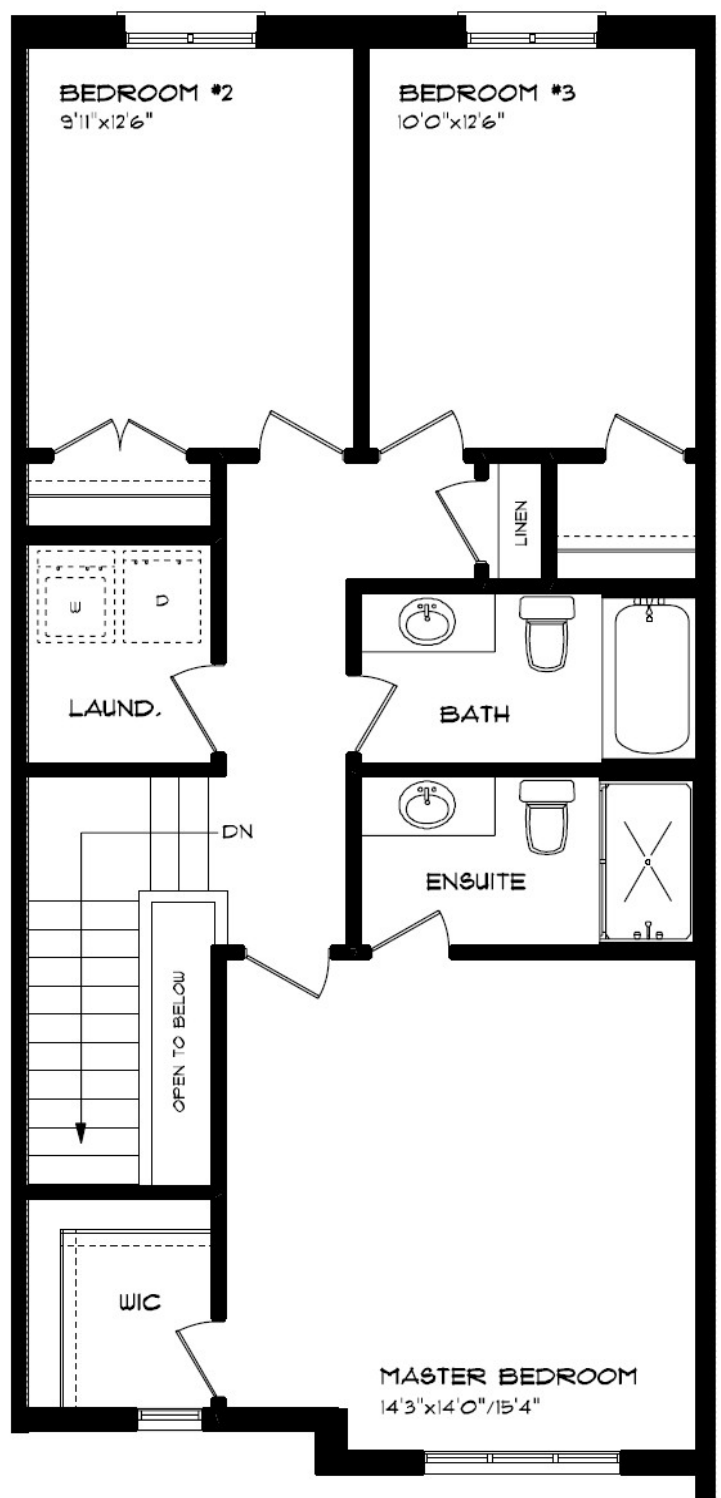
features

PROFESSIONALLY DESIGNED

CARPET FLOORING

VINYL PLANK FLOORING

WALK-IN CLOSET



WILLOW RUN

111 WILLOW DRIVE

LOWER LEVEL UNFINISHED

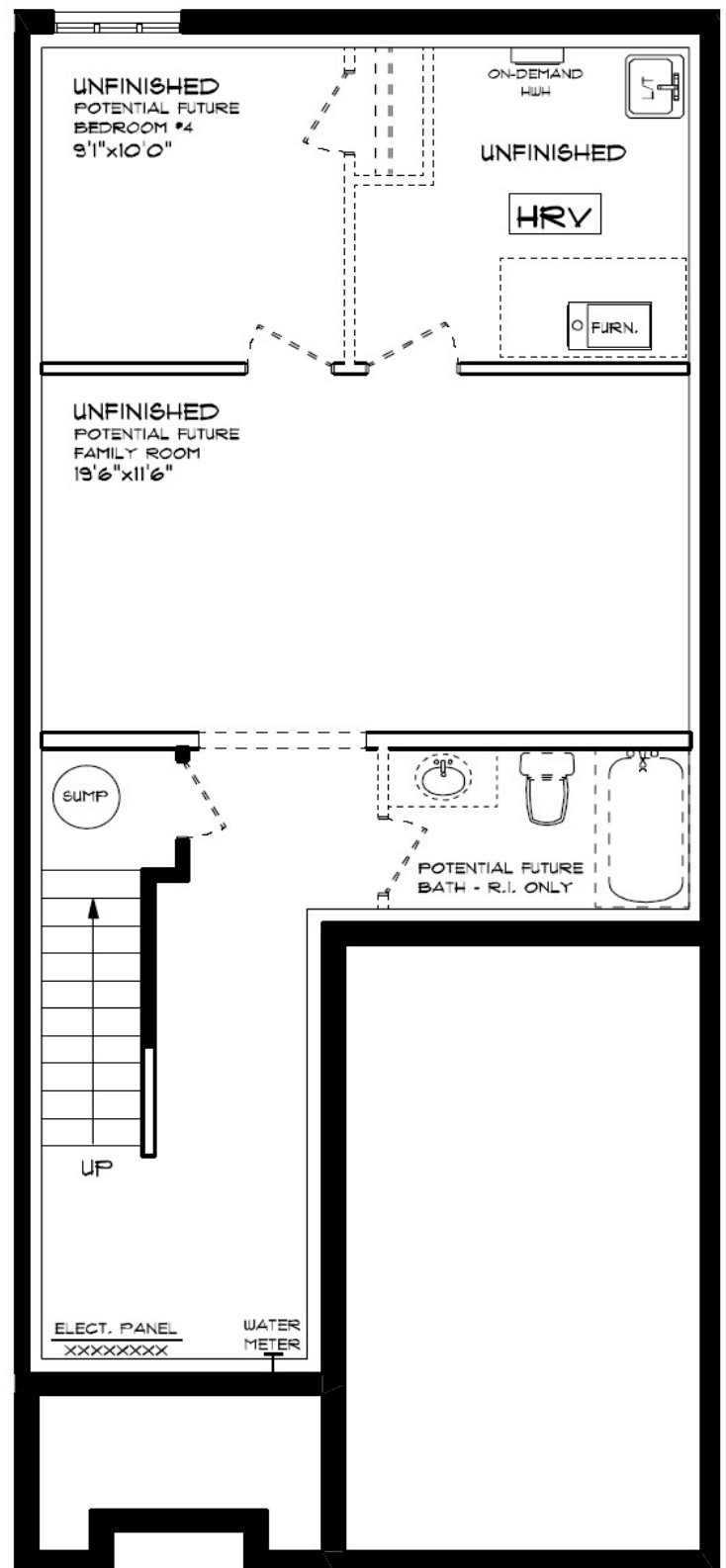
features

AIR CONDITIONING

GAS FURNACE WITH HRV

HUMIDIFIER

NEW HOME WARRANTY



WILLOW RUN

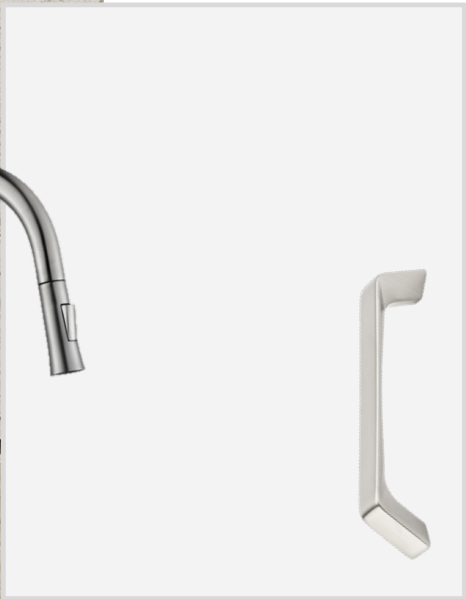
111 WILLOW DRIVE

INTERIOR FINISHES

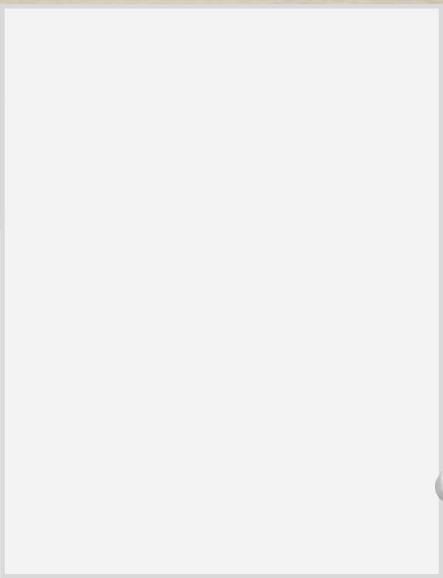


QUARTZ KITCHEN COUNTERTOPS

LUXURY VINYL PLANK



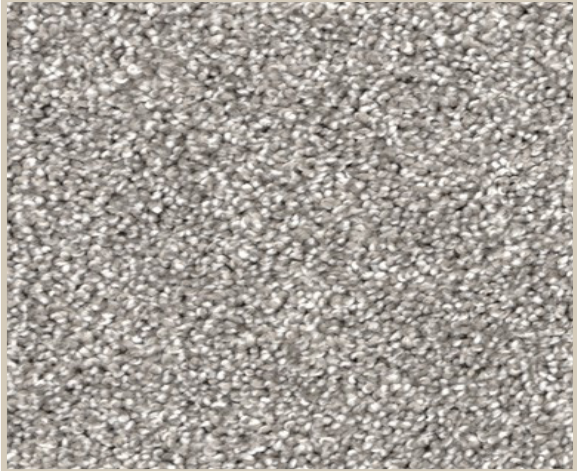
MELAMINE KITCHEN
CABINETRY



MELAMINE VANITY
CABINETRY



LAMINATE VANITY
COUNTERTOPS



CARPET