

# SEMI - DETACHED

## ESSENTIAL FEATURES



## 29 DUNNING WAY

ORCHARD PARK MEADOWS, ST. THOMAS

### THE DETAILS

PRICE	\$ 565,000
CLOSING DATE	JUNE 26, 2025
LOT NUMBER	14A
BEDROOMS	2
BATHS	2
SQFT	1225
GARAGE	1
MODEL	SEMI-DETACHED

**HAYHOE™**  
— HOMES —



### SALES PROFESSIONAL

DAVE MATTHEWS

519.633.9215

dave.matthews@hayhoehomes.com



# SITE PLAN



## 29 DUNNING WAY

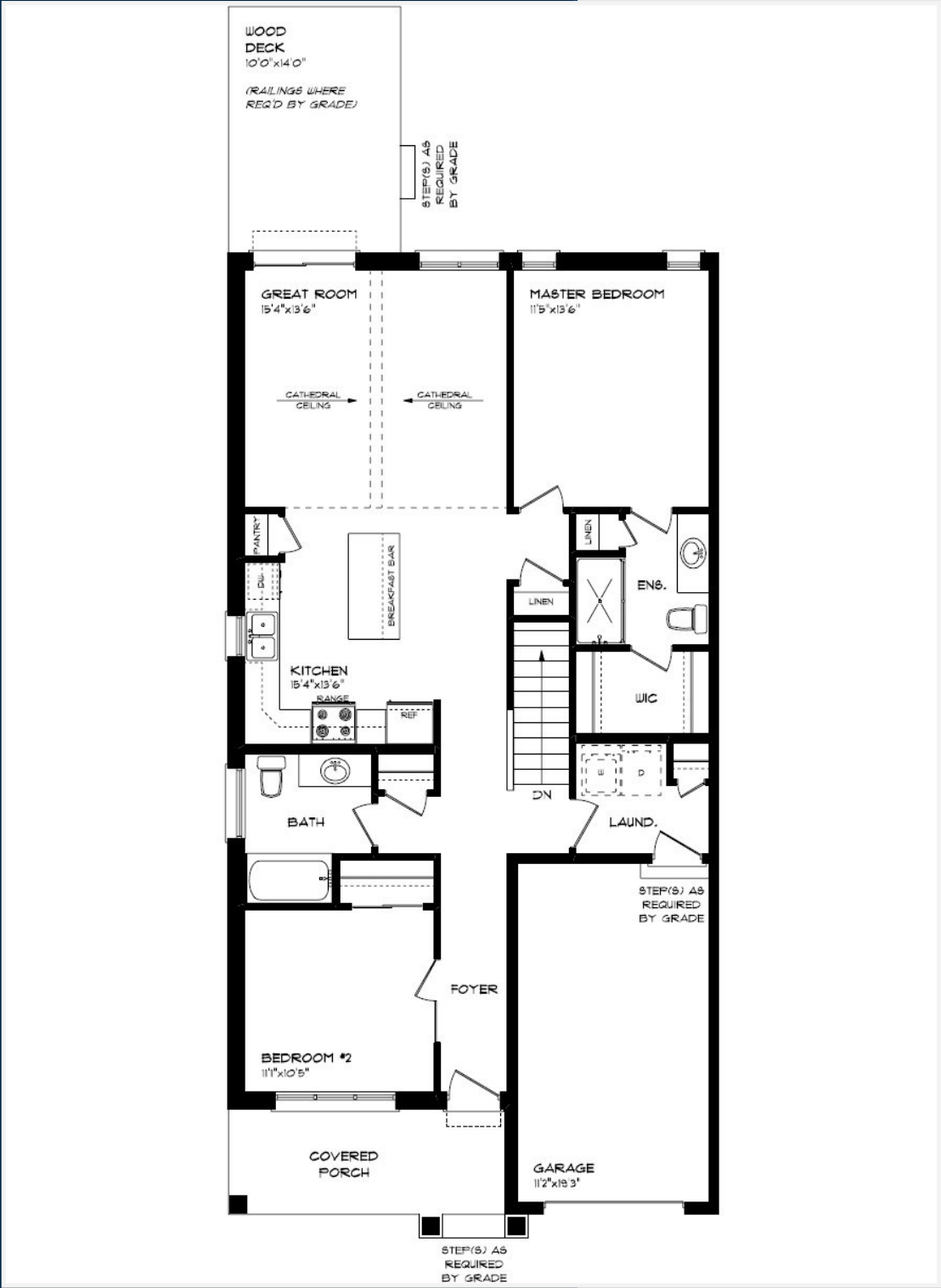
EXTERIOR FEATURES:

- KEYLESS ENTRY
- TREATED WOOD DECK
- ASPHALT DRIVEWAY
- WALKING TRAILS



# MAIN FLOOR

29 DUNNING WAY, ST. THOMAS



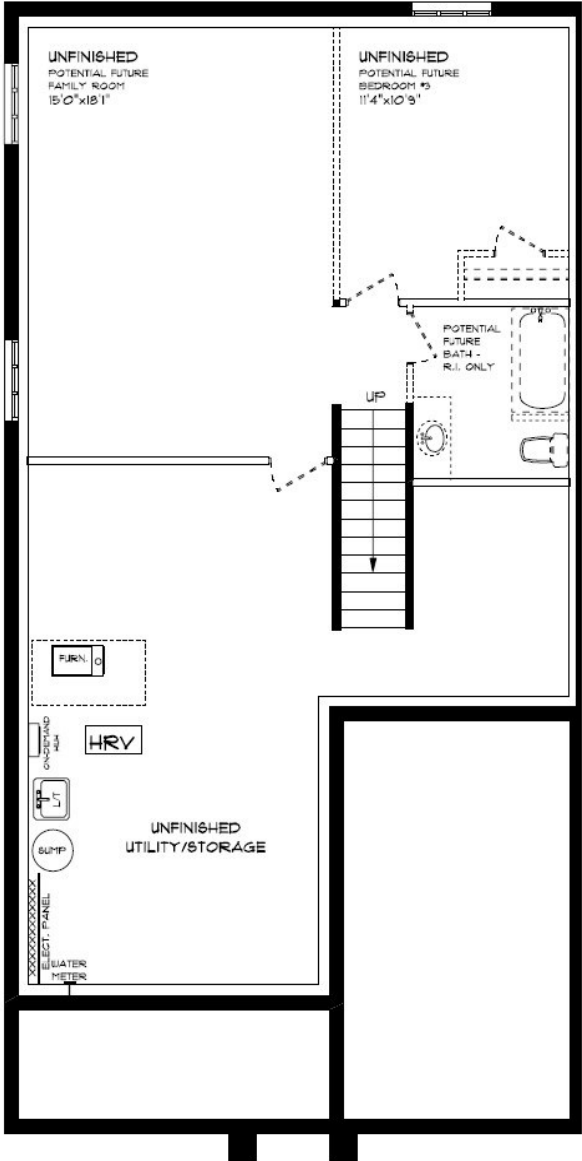
MAIN FLOOR:  
APPROX 1225 SQFT

- SINGLE CAR GARAGE
- KITCHEN ISLAND
- VINYL PLANK FLOORING
- QUARTZ COUNTERTOPS



# BASEMENT

29 DUNNING WAY, ST. THOMAS



BASEMENT:  
UNFINISHED

AIR CONDITIONING  
GAS FURNACE WITH HRV  
HUMIDIFIER  
NEW HOME WARRANTY

**HAYHOE™**  
— HOMES —

# INTERIOR FINISHES

## 29 DUNNING



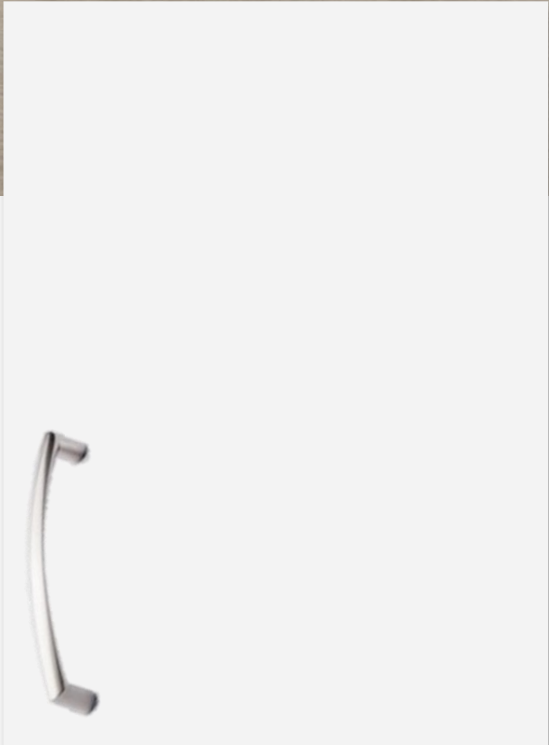
KITCHEN COUNTERTOPS



LUXURY VINYL PLANK



PAINT  
COLOUR



KITCHEN  
CABINETRY

ISLAND PENDANTS



FOYER  
FIXTURE



PRICE, PRODUCTS, COLOURS & FEATURES ARE SUBJECT TO CHANGE WITHOUT NOTICE.  
COLOURS SHOWN MAY VARY FROM INSTALLED MATERIALS. E & O.E

CREATED AUG 30, 2024



# INTERIOR FINISHES

## 29 DUNNING

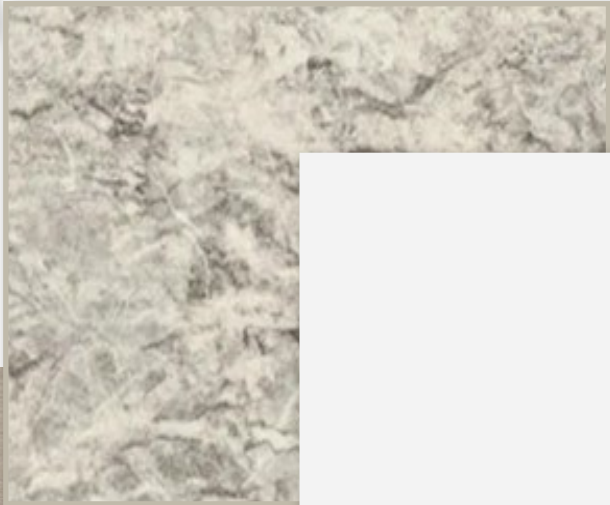
INTERIOR DOOR STYLE



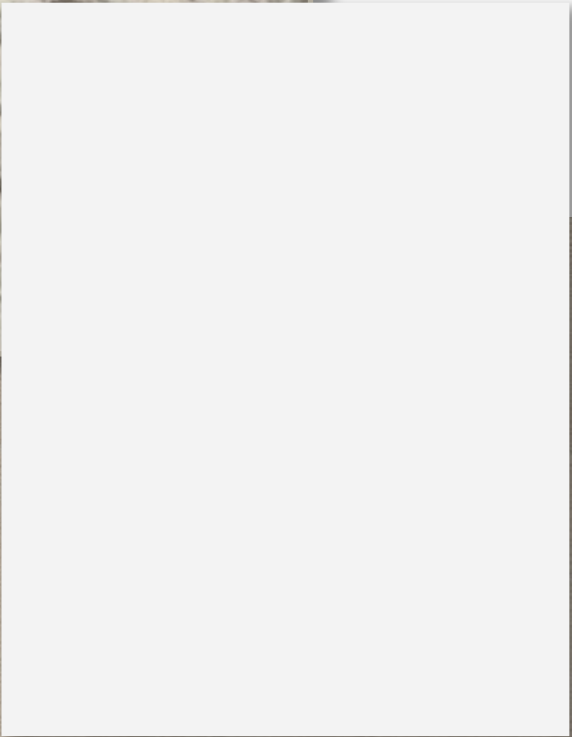
CARPET



BATHROOM  
COUNTERTOP



BATHROOM  
CABINETRY



LUXURY VINYL PLANK

