

# WILLOW RUN

## 22 HEMLOCK CRESCENT

AYLMER | ONTARIO

SEMI-DETACHED



## THE DETAILS

PRICE	\$589,000
CLOSING DATE	July 23, 2025
LOT NUMBER	41A
BEDROOMS	2
BATHS	2
GARAGE	1
DRIVEWAY	17'
SQ FT	1,225
MODEL	Semi-Detached

**Emma Smith** SALES PROFESSIONAL

519.409.1474 | emma.smith@hayhoehomes.com



[WWW.HAYHOEHOMES.COM](http://www.hayhoehomes.com)

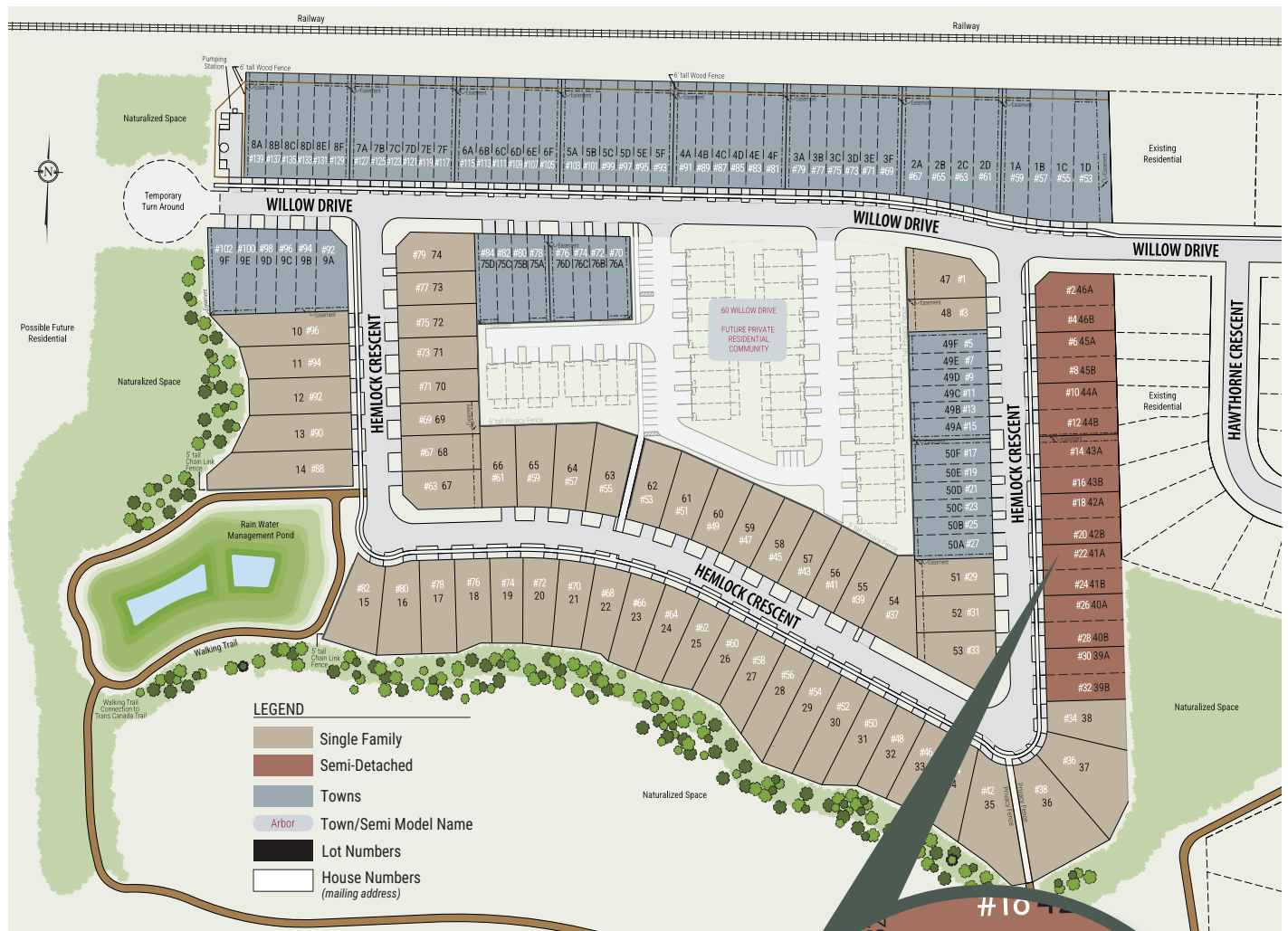
Price, products, colours & features are subject to change without notice. E. & O. E. DECEMBER 28, 2024

**HAYHOE**<sup>TM</sup>  
— HOMES —

# WILLOW RUN

## SITE PLAN

22 HEMLOCK CRESCENT | AYLMER ON



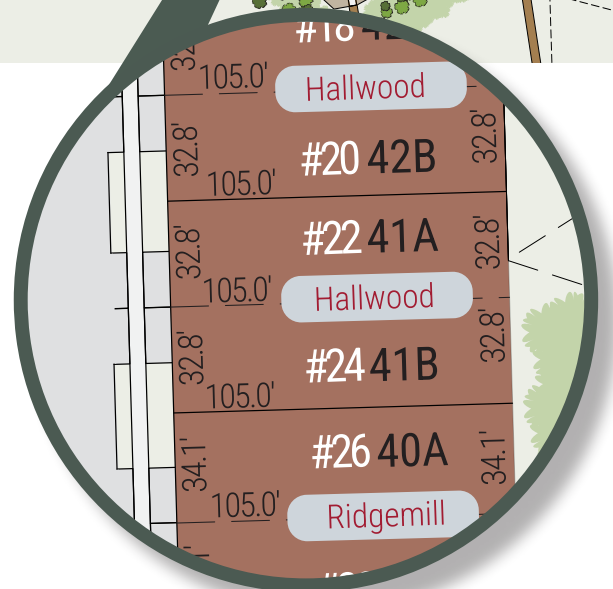
### exterior features

KEYLESS ENTRY

TREATED WOOD DECK

ASPHALT DRIVEWAY

WALKING TRAILS



# WILLOW RUN

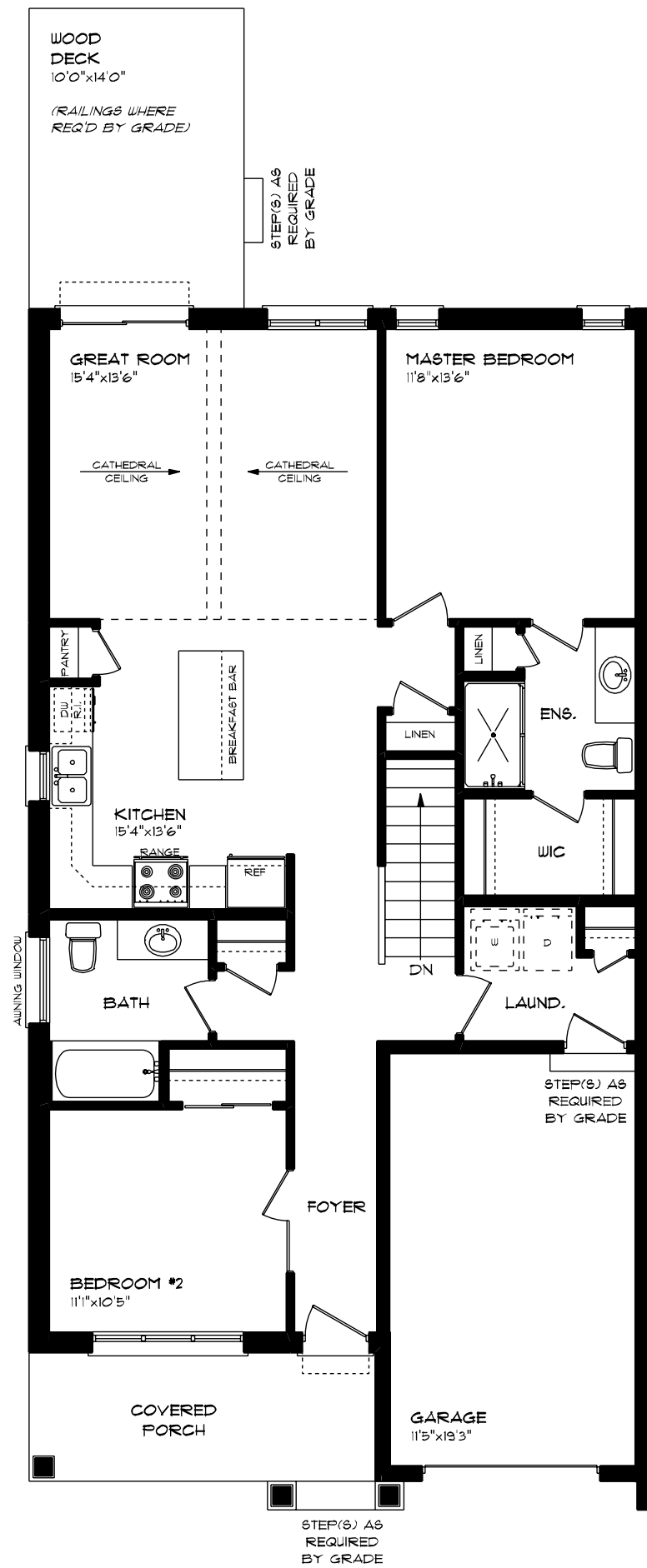
22 HEMLOCK CRESCENT

## MAIN FLOOR

1,225 sq ft

### features

- MAIN FLOOR LAUNDRY
- QUARTZ COUNTERTOPS
- VINYL PLANK FLOORING
- KITCHEN ISLAND



# WILLOW RUN

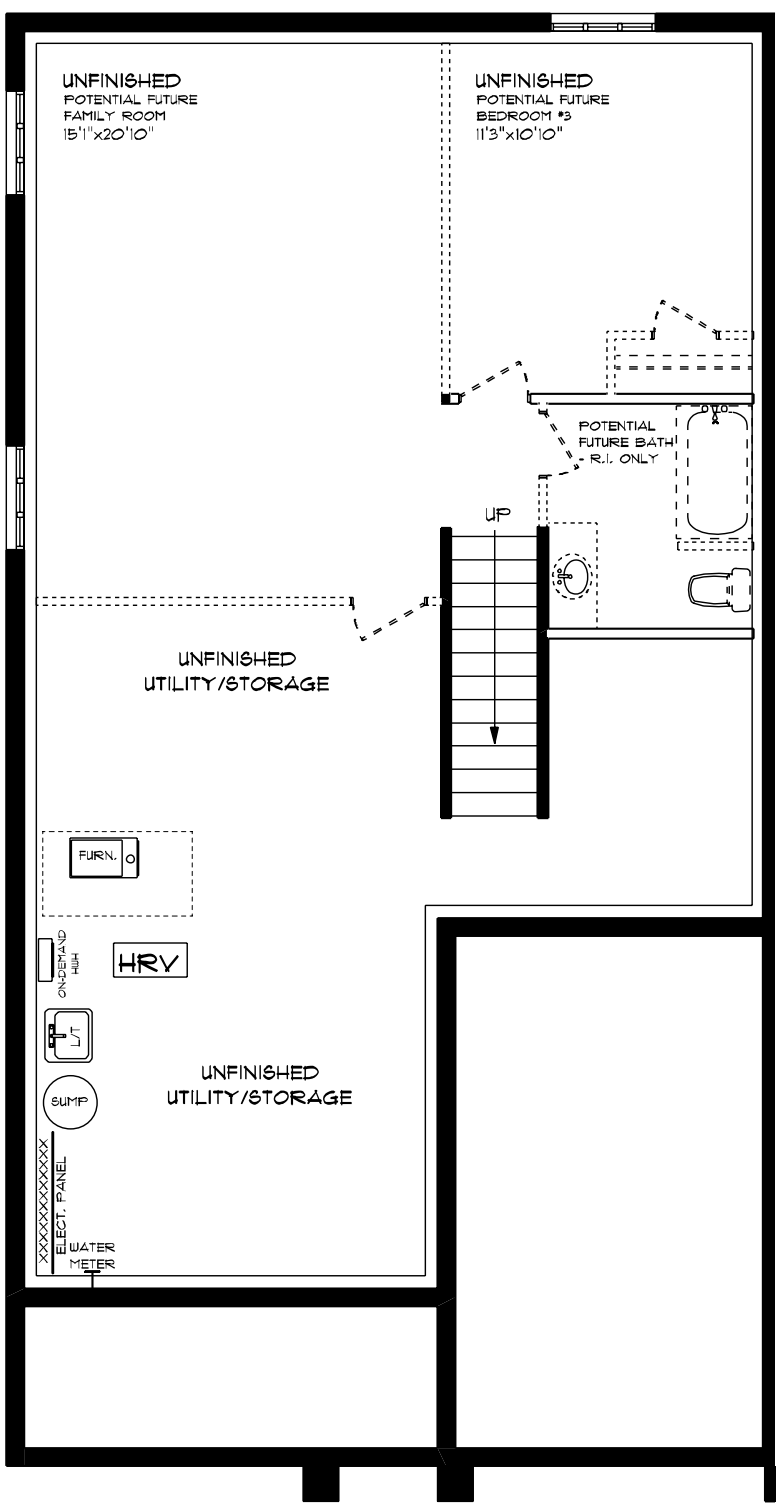
22 HEMLOCK CRESCENT

## LOWER LEVEL

UNFINISHED

### features

- AIR CONDITIONING
- GAS FURNACE WITH HRV
- HUMIDIFIER
- NEW HOME WARRANTY





WILLOW  
RUN

22 HEMLOCK CRESCENT

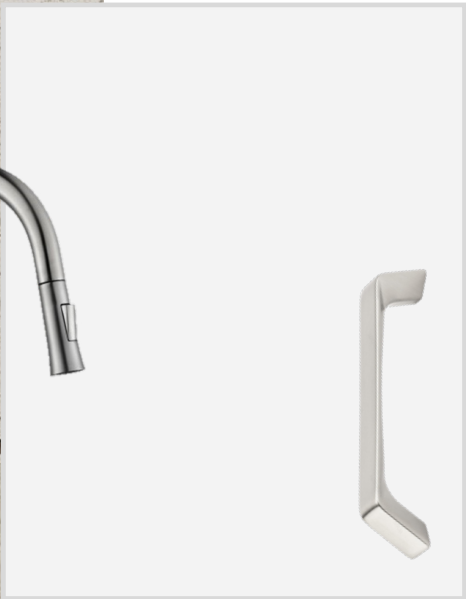
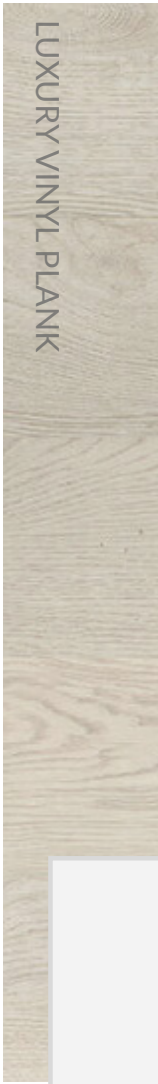
INTERIOR FINISHES



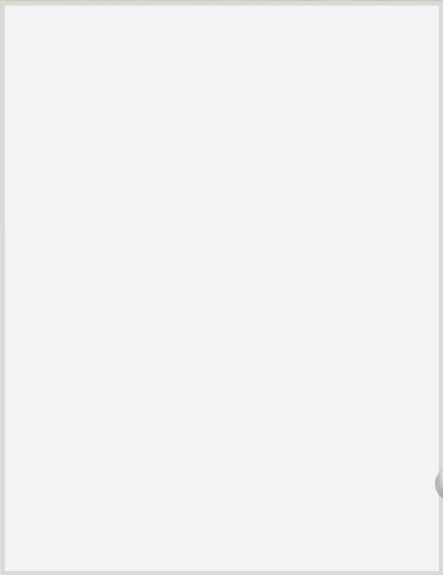
QUARTZ KITCHEN COUNTERTOPS



LUXURY VINYL PLANK



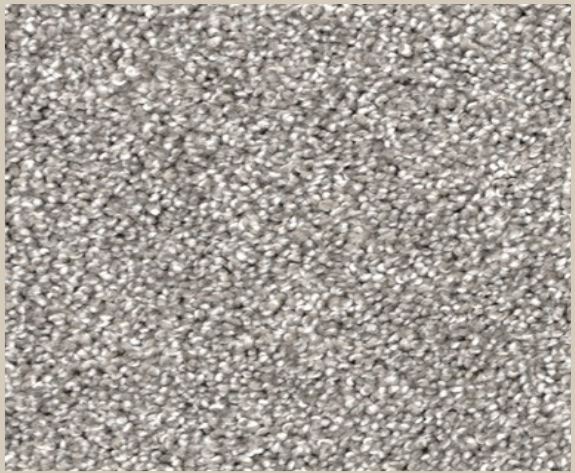
MELAMINE KITCHEN CABINETRY



MELAMINE VANITY CABINETRY



LAMINATE VANITY COUNTERTOPS



CARPET