

# WILLOW RUN

## 55 WILLOW DRIVE

AYLMER | ONTARIO

TOWNHOME

PREMIUM  
SPECS



## THE DETAILS

PRICE	\$555,000
CLOSING DATE	Available Now
LOT NUMBER	1C
BEDROOMS	3
BATHS	2.5
GARAGE	2
DRIVEWAY	19'
SQ FT	1,972
MODEL	Townhome

Emma Smith SALES PROFESSIONAL

519.409.1474 | emma.smith@hayhoehomes.com



[WWW.HAYHOEHOMES.COM](http://WWW.HAYHOEHOMES.COM)

Price, products, colours & features are subject to change without notice. E. & O. E. DATE MAR 2025

**HAYHOE**<sup>TM</sup>  
HOMES

# WILLOW RUN

## SITE PLAN

55 WILLOW DRIVE | AYLMER ON



### exterior features

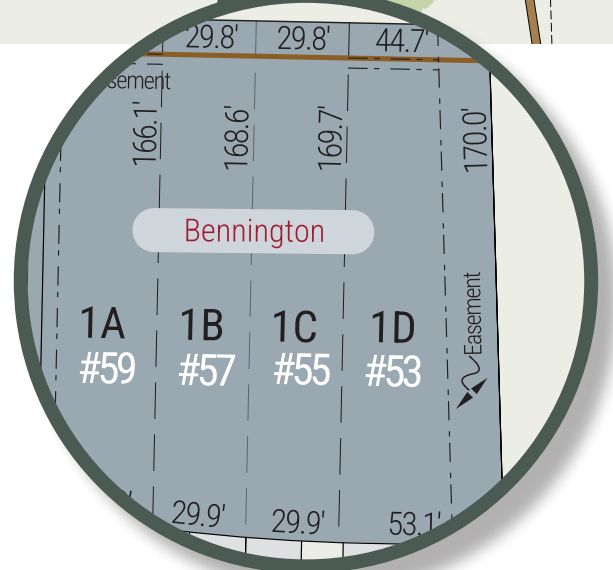
KEYLESS ENTRY

TREATED WOOD DECK

BBQ GAS LINE

ASPHALT DRIVEWAY

WALKING TRAILS



# WILLOW RUN

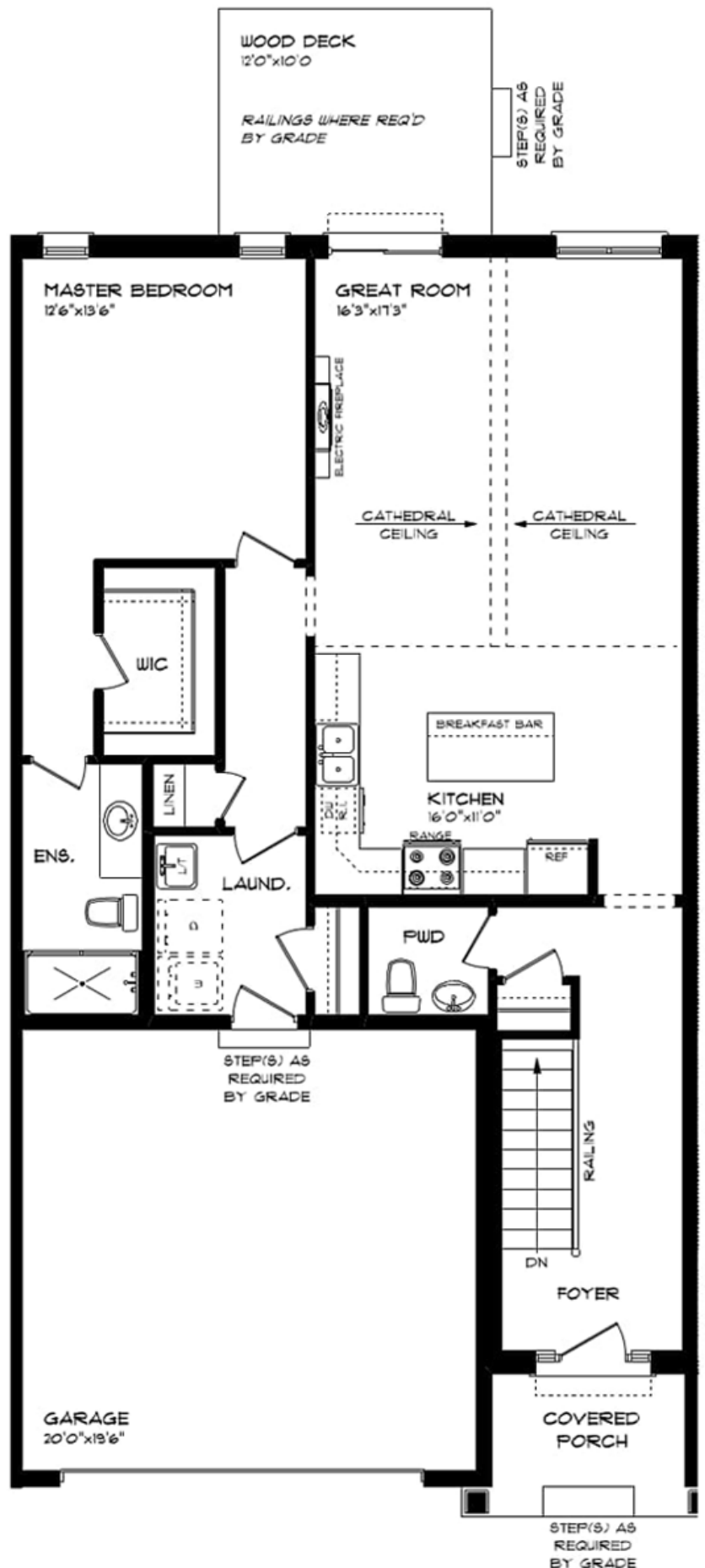
55 WILLOW DRIVE

## MAIN FLOOR

1,180 sq ft

### features

MAIN FLOOR LAUNDRY  
QUARTZ COUNTERTOPS  
KITCHEN BACKSPLASH  
DOUBLE CAR GARAGE  
ELECTRIC FIREPLACE



# WILLOW RUN

55 WILLOW DRIVE

## LOWER LEVEL

792 sq ft

### features

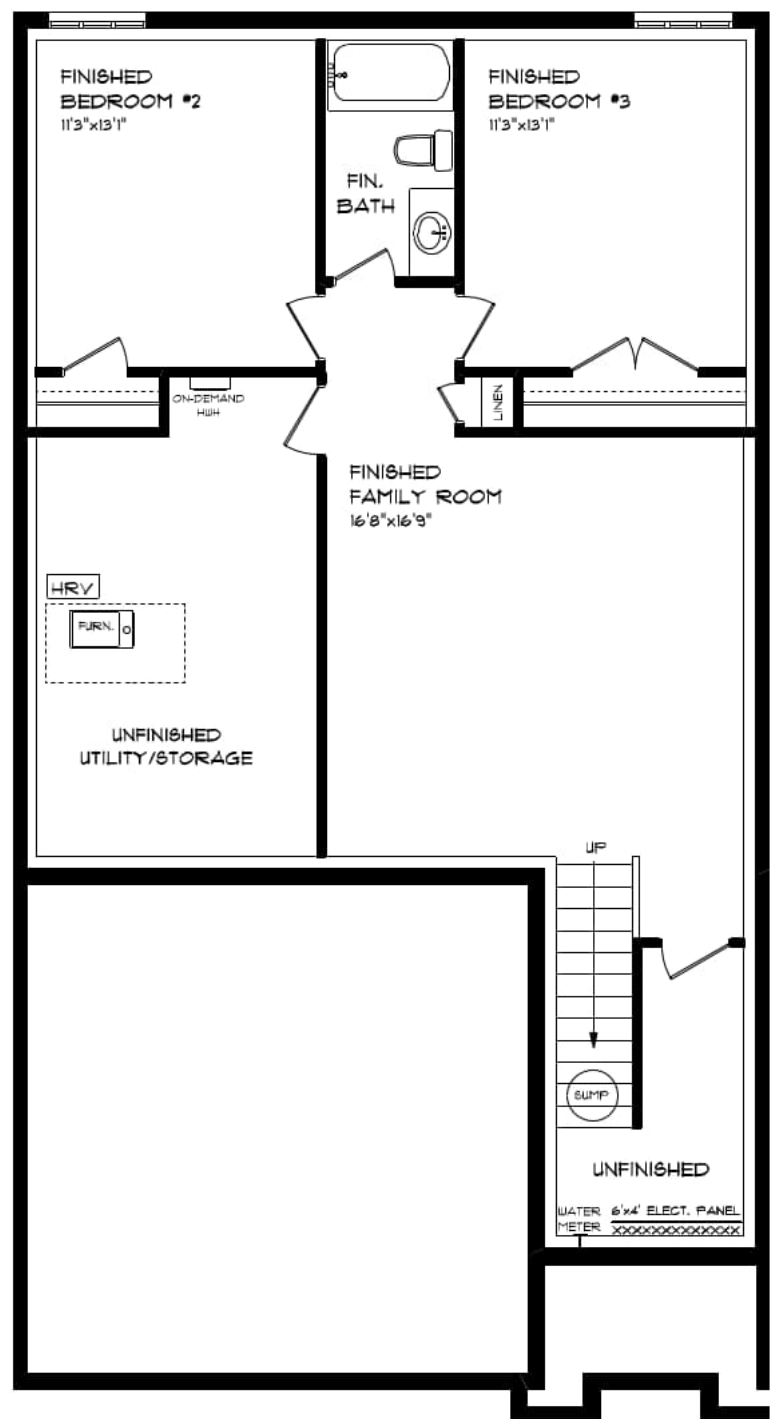
CARPET FLOORING

AIR CONDITIONING

GAS FURNACE WITH HRV

HUMIDIFIER

NEW HOME WARRANTY



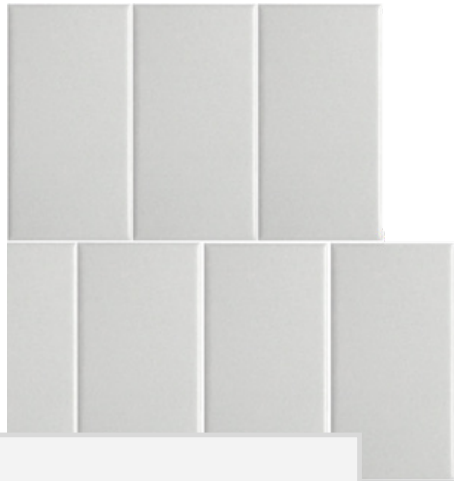
# WILLOW RUN

55 WILLOW DRIVE

## INTERIOR FINISHES



KITCHEN BACKSPLASH



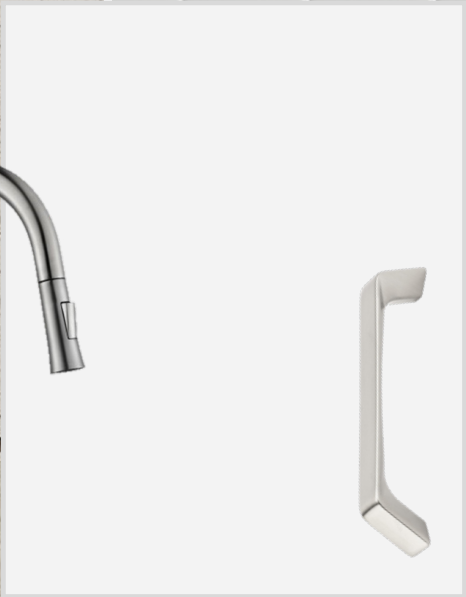
QUARTZ KITCHEN COUNTERTOPS



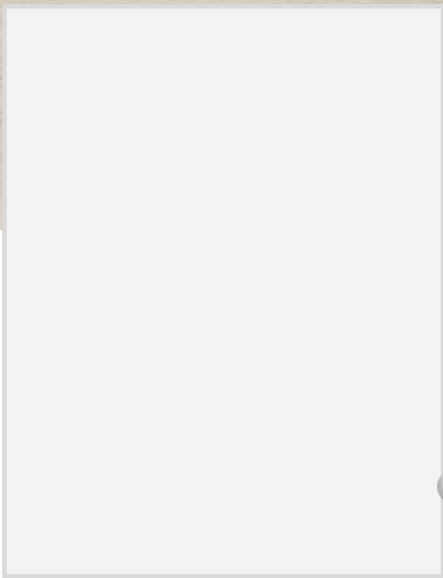
LUXURY VINYL PLANK



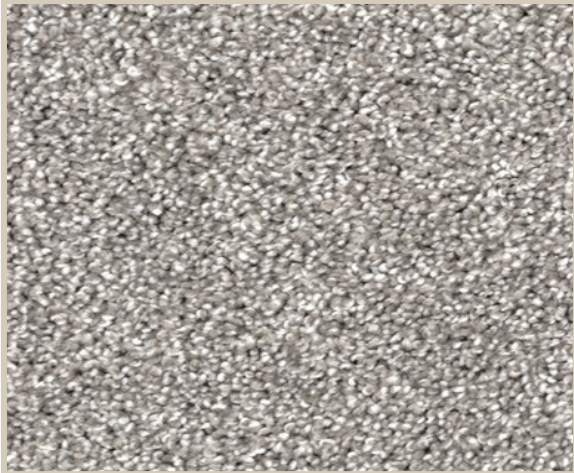
MELAMINE KITCHEN  
CABINETRY



MELAMINE VANITY  
CABINETRY



LAMINATE VANITY  
COUNTERTOPS



CARPET