

# WILLOW RUN

## 6 HEMLOCK CRESCENT

AYLMER | ONTARIO

SEMI-DETACHED

PREMIUM  
SPECS



## THE DETAILS

PRICE	\$599,000
CLOSING DATE	April 7, 2025
LOT NUMBER	45A
BEDROOMS	3
BATHS	3
GARAGE	1
DRIVEWAY	17'
SQ FT	1,831
MODEL	Semi-Detached

Emma Smith SALES PROFESSIONAL

519.409.1474 | emma.smith@hayhoehomes.com



[WWW.HAYHOEHOMES.COM](http://WWW.HAYHOEHOMES.COM)

Price, products, colours & features are subject to change without notice. E. & O. E. AUGUST 30, 2024

**HAYHOE**<sup>TM</sup>  
— HOMES —

# WILLOW RUN

## SITE PLAN

6 HEMLOCK CRESCENT | AYLMER ON



### exterior features

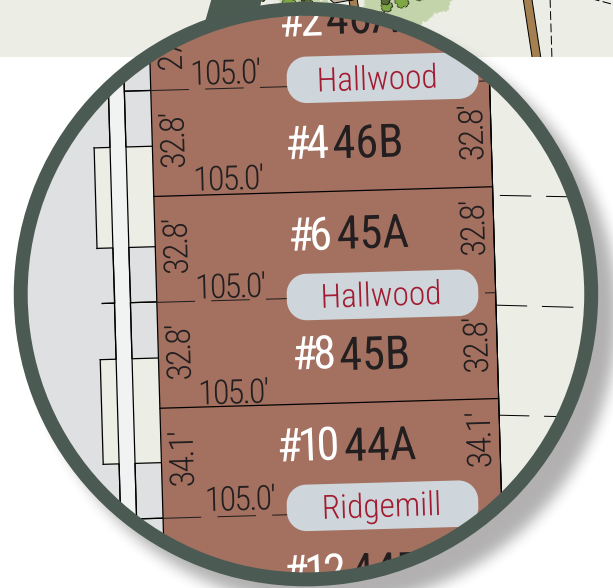
KEYLESS ENTRY

TREATED WOOD DECK

BBQ GAS LINE

ASPHALT DRIVEWAY

WALKING TRAILS



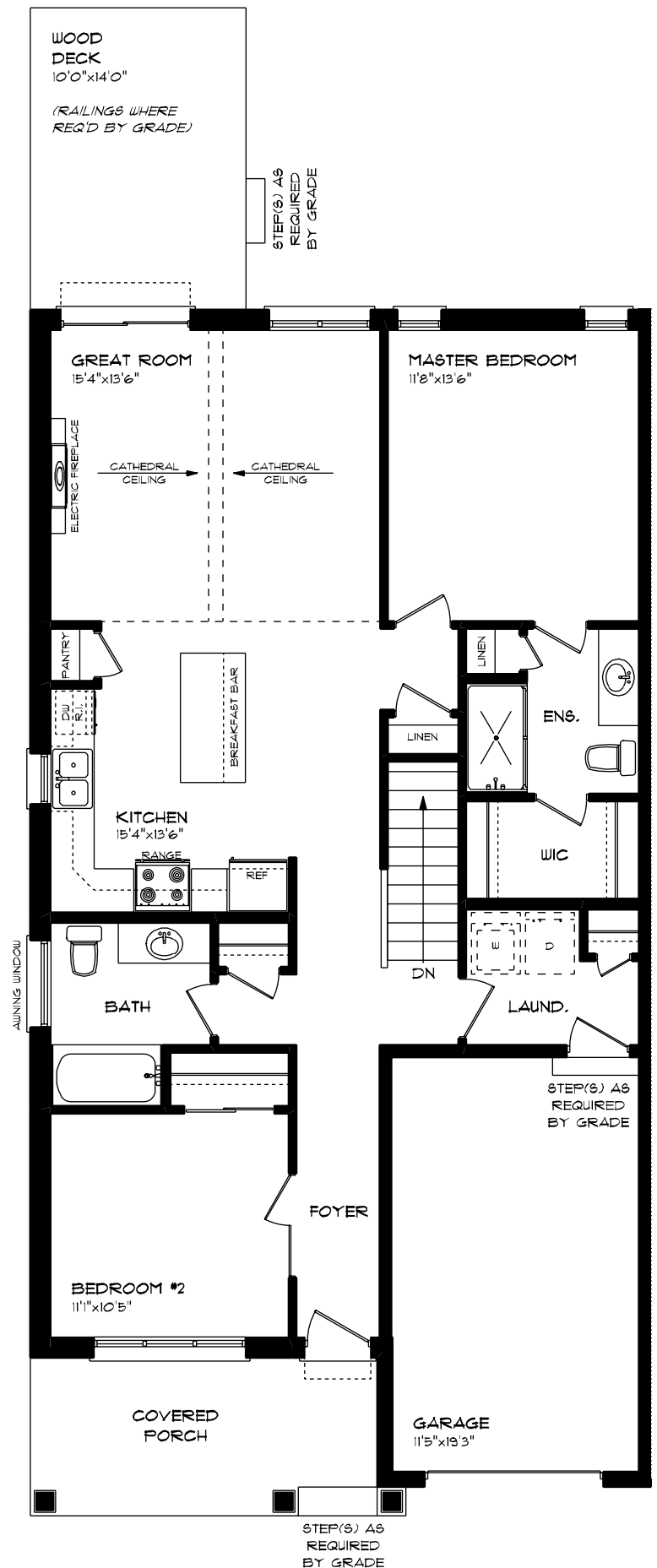
# WILLOW RUN

6 HEMLOCK CRESCENT

MAIN FLOOR  
1,225 sq ft

## features

MAIN FLOOR LAUNDRY  
QUARTZ COUNTERTOPS  
KITCHEN BACKSPLASH  
9' CEILINGS



# WILLOW RUN

6 HEMLOCK CRESCENT

## LOWER LEVEL

606 sq ft

### features

CARPET FLOORING

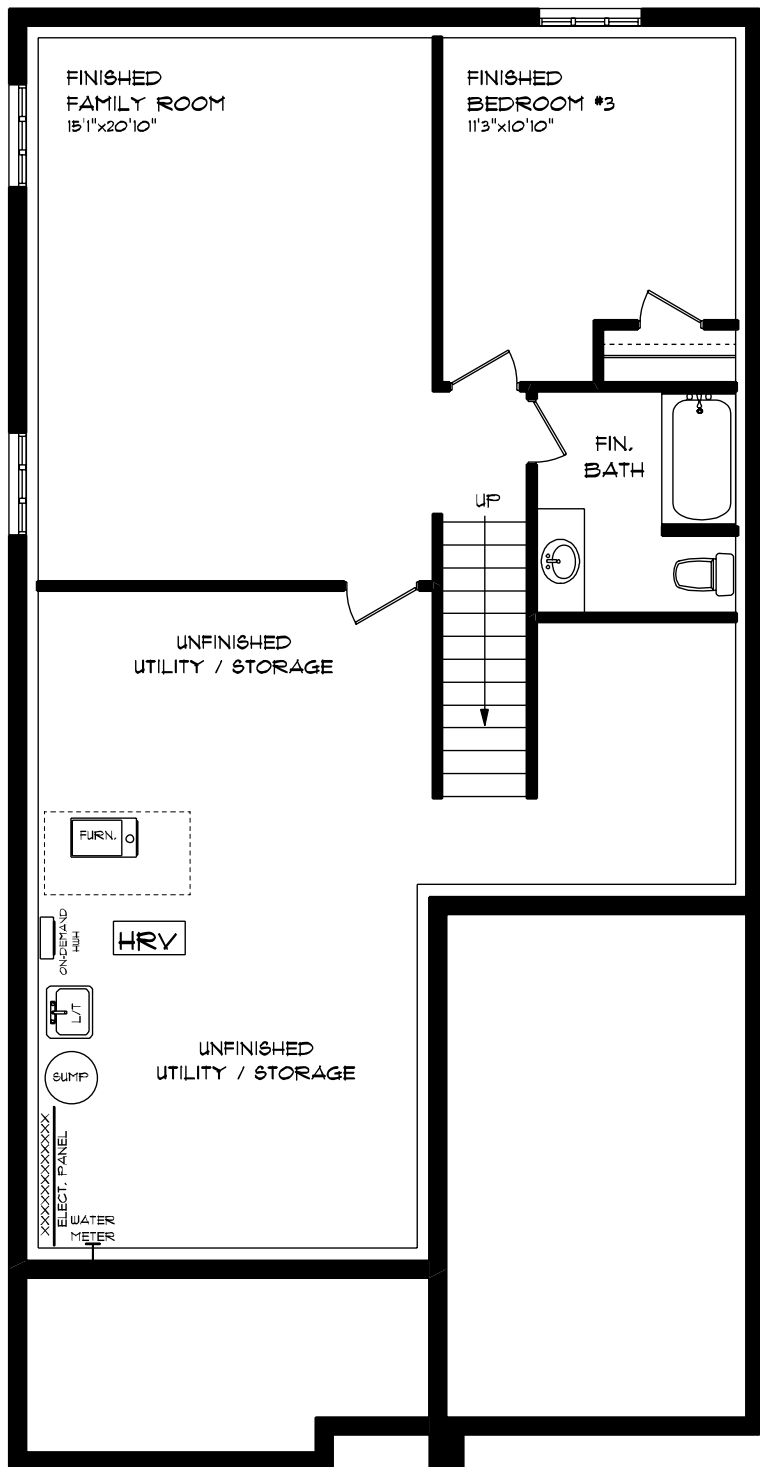
LVP FLOORING

AIR CONDITIONING

GAS FURNACE WITH HRV

HUMIDIFIER

NEW HOME WARRANTY





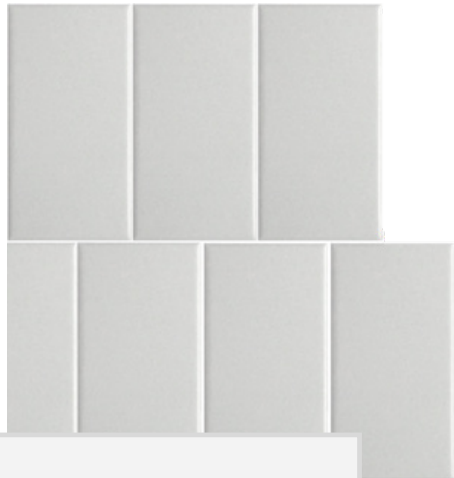
# WILLOW RUN

6 HEMLOCK CRESCENT



## INTERIOR FINISHES

KITCHEN BACKSPLASH



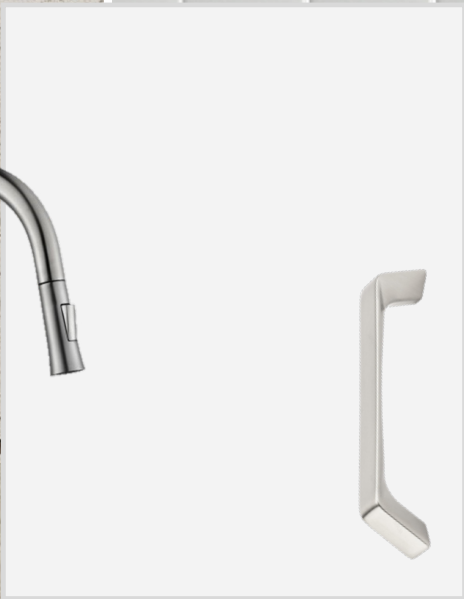
QUARTZ KITCHEN COUNTERTOPS



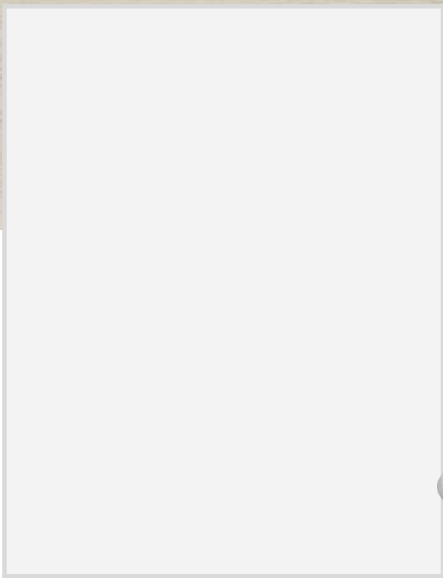
LUXURY VINYL PLANK



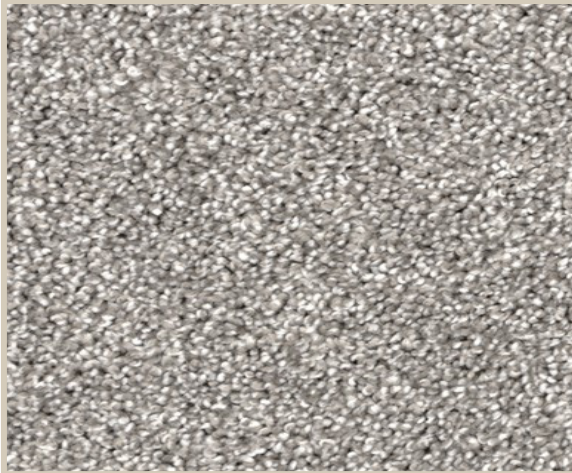
MELAMINE KITCHEN  
CABINETRY



MELAMINE VANITY  
CABINETRY



LAMINATE VANITY  
COUNTERTOPS



CARPET