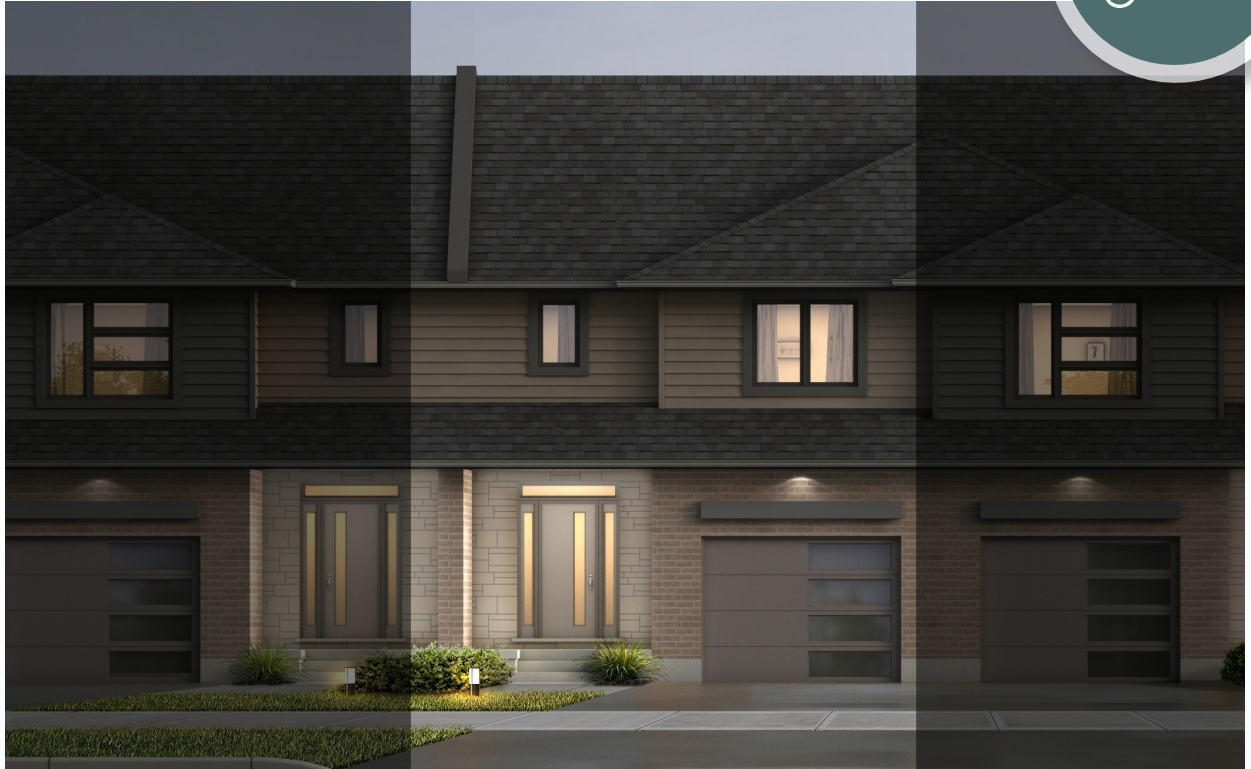


ROLLING MEADOWS

TOWNHOME

57 Woodcock Drive | Tillsonburg ON

PREMIUM
SPECS



THE DETAILS

PRICE	\$574,000
CLOSING DATE	February 4, 2026
LOT NUMBER	10C
BEDROOMS	4
BATHS	3.5
GARAGE	1
DRIVEWAY	12' 4"
SQ FT	2,426
MODEL	Tifton

Laura Babcock SALES PROFESSIONAL

519.520.0539 | laura.babcock@hayhoehomes.com



WWW.HAYHOEHOMES.COM

Price, products, colours & features are subject to change without notice. E. & O. E. JUNE 3, 2025

HAYHOETM
HOMES

ROLLING MEADOWS

SITE PLAN

57 Woodcock Drive | Tillsonburg ON



exterior features

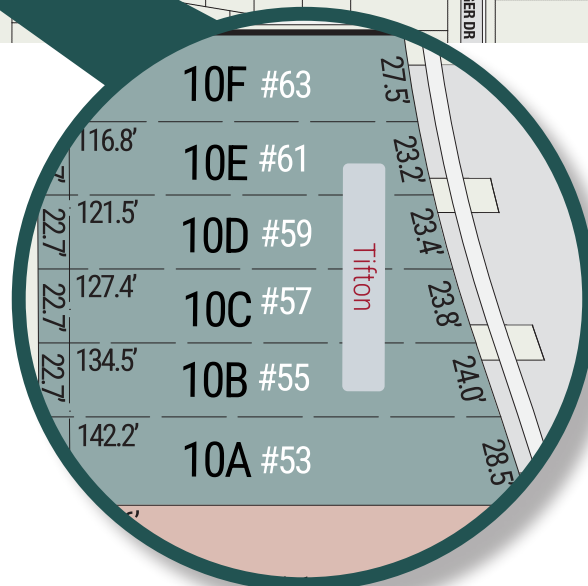
KEYLESS ENTRY

TREATED WOOD DECK

BBQ GAS LINE

ASPHALT DRIVEWAY

WALKING TRAILS



ROLLING MEADOWS

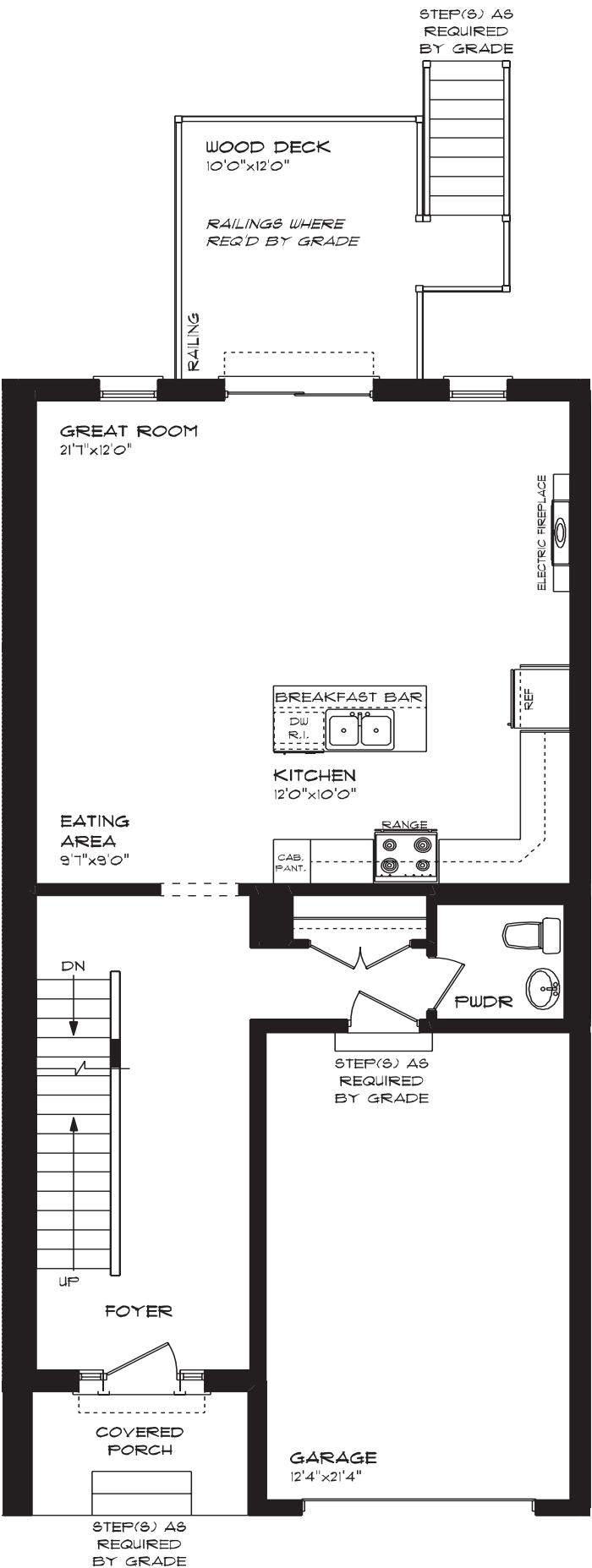
57 Woodcock Drive | Tillsonburg ON

MAIN FLOOR

836 sq ft

features

- QUARTZ COUNTERTOPS
- KITCHEN BACKSPLASH
- LUXURY VINYL PLANK FLOORING
- KITCHEN ISLAND
- 9' MAIN FLOOR CEILING
- SINGLE CAR GARAGE
- KITCHEN PANTRY



ROLLING MEADOWS

57 Woodcock Drive | Tillsonburg ON

SECOND FLOOR

989 sq ft

features

PROFESSIONALLY DESIGNED

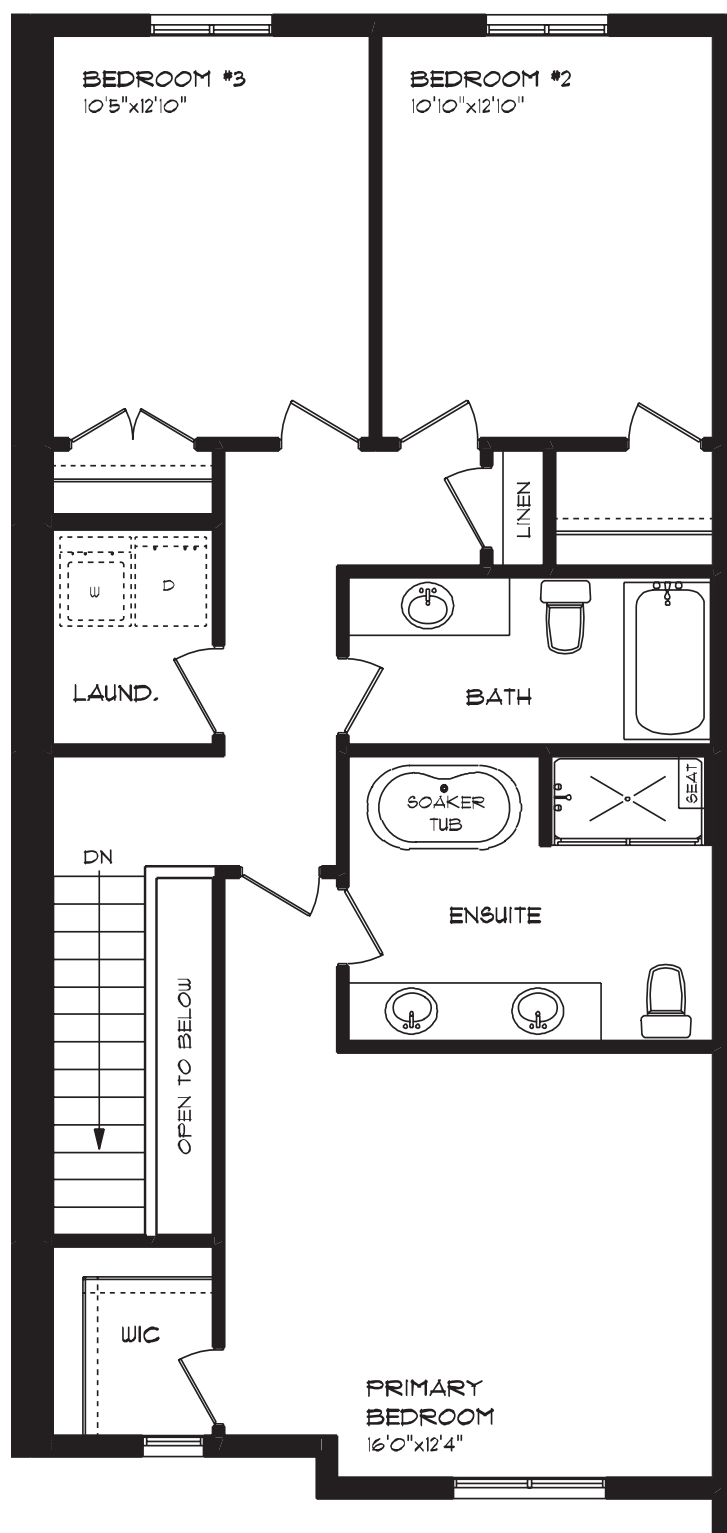
LUXURY VINYL PLANK FLOORING

CARPET FLOORING

SECOND FLOOR LAUNDRY

ENSUITE BATH

WALK-IN CLOSET



ROLLING MEADOWS

57 Woodcock Drive | Tillsonburg ON

LOWER LEVEL

601 sq ft

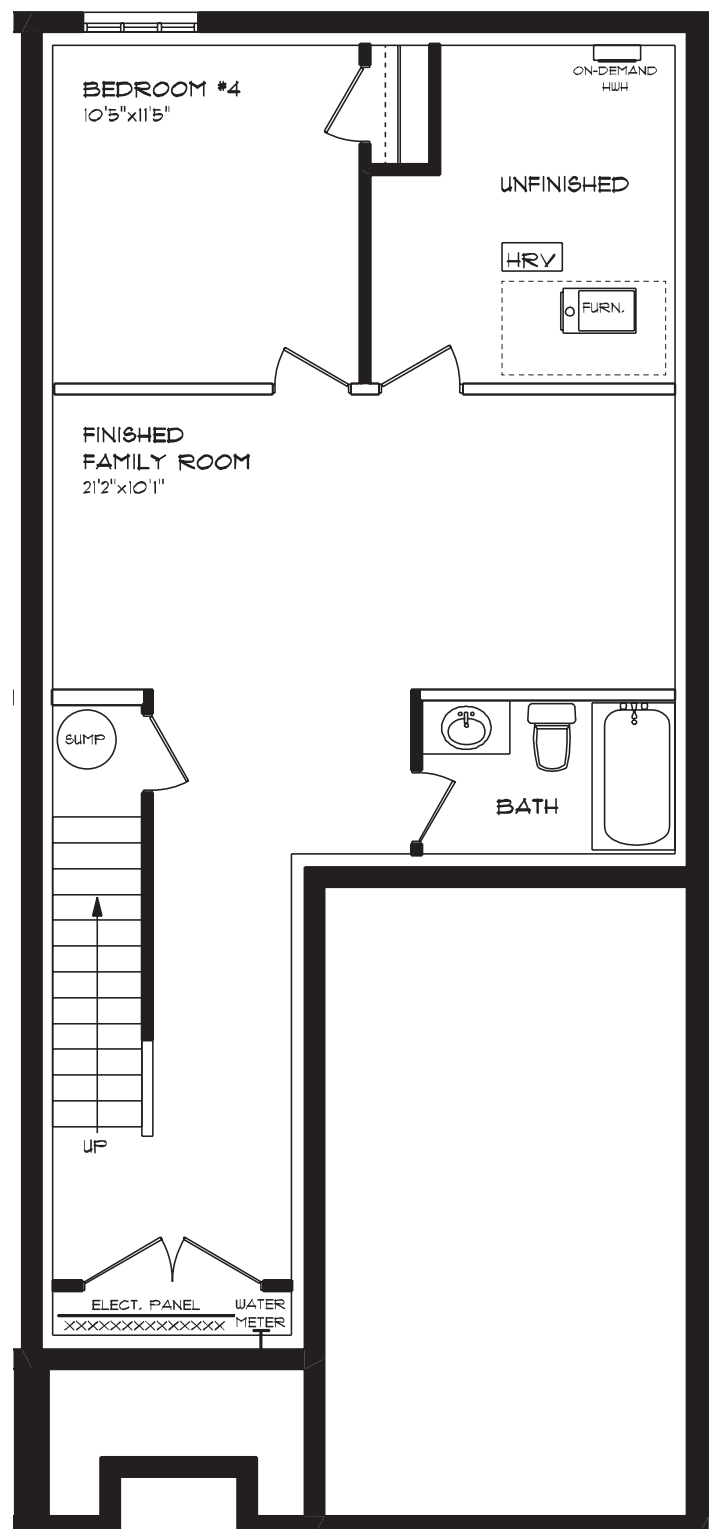
features

AIR CONDITIONING

GAS FURNACE WITH HRV

HUMIDIFIER

NEW HOME WARRANTY



ROLLING MEADOWS

57 Woodcock Drive | Tillsonburg ON

INTERIOR FINISHES



KITCHEN BACKSPLASH



QUARTZ KITCHEN COUNTERTOPS



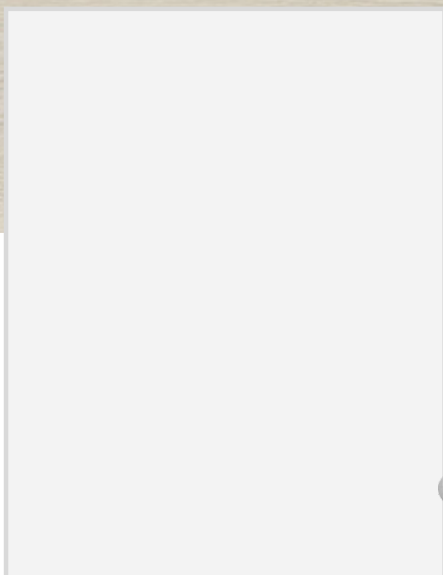
LUXURY VINYL PLANK



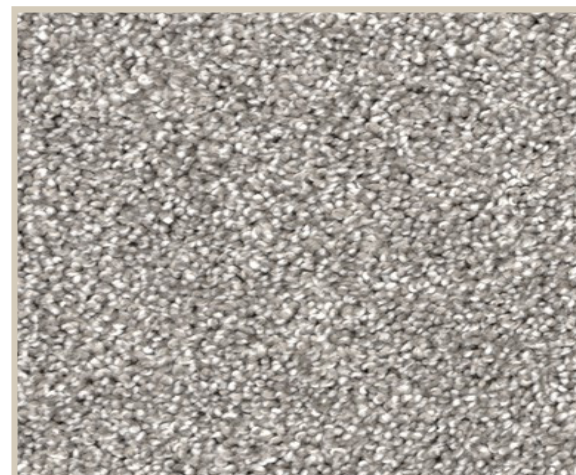
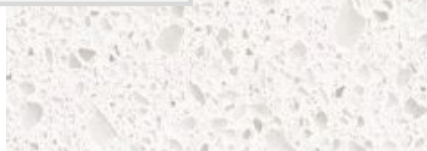
MELAMINE KITCHEN CABINETRY



MELAMINE VANITY CABINETRY



LAMINATE VANITY COUNTERTOPS



CARPET