

# WILLOW RUN

## 2 HEMLOCK CRESCENT

AYLMER | ONTARIO

SEMI-DETACHED

PREMIUM  
SPECS



## THE DETAILS

PRICE	\$599,000
CLOSING DATE	Available Now
LOT NUMBER	46A
BEDROOMS	3
BATHS	2.5
GARAGE	1
DRIVEWAY	17'
SQ FT	1,831
MODEL	Semi

**Emma Smith** SALES PROFESSIONAL

519.409.1474 | emma.smith@hayhoehomes.com



[WWW.HAYHOEHOMES.COM](http://WWW.HAYHOEHOMES.COM)

Price, products, colours & features are subject to change without notice. E. & O. E. DATE MAR 2025

**HAYHOE™**  
— HOMES —

# WILLOW RUN

## SITE PLAN

2 HEMLOCK CRESCENT | AYLMER ON



### exterior features

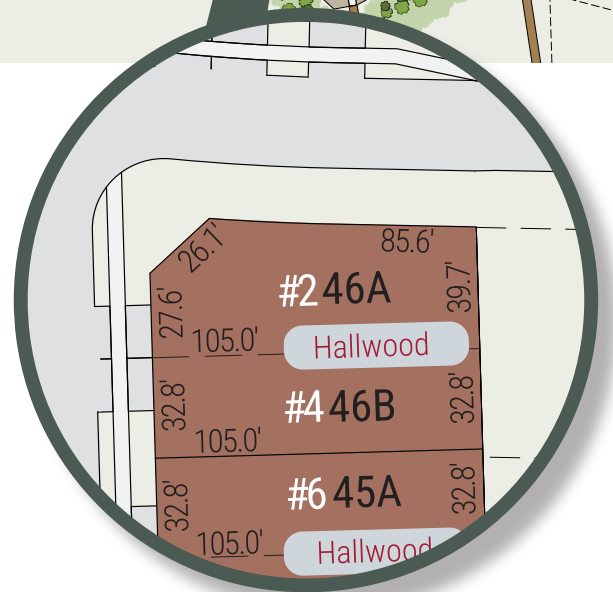
KEYLESS ENTRY

TREATED WOOD DECK

BBQ GAS LINE

ASPHALT DRIVEWAY

WALKING TRAILS



# WILLOW RUN

2 HEMLOCK CRESCENT

## MAIN FLOOR

1,225 sq ft

### features

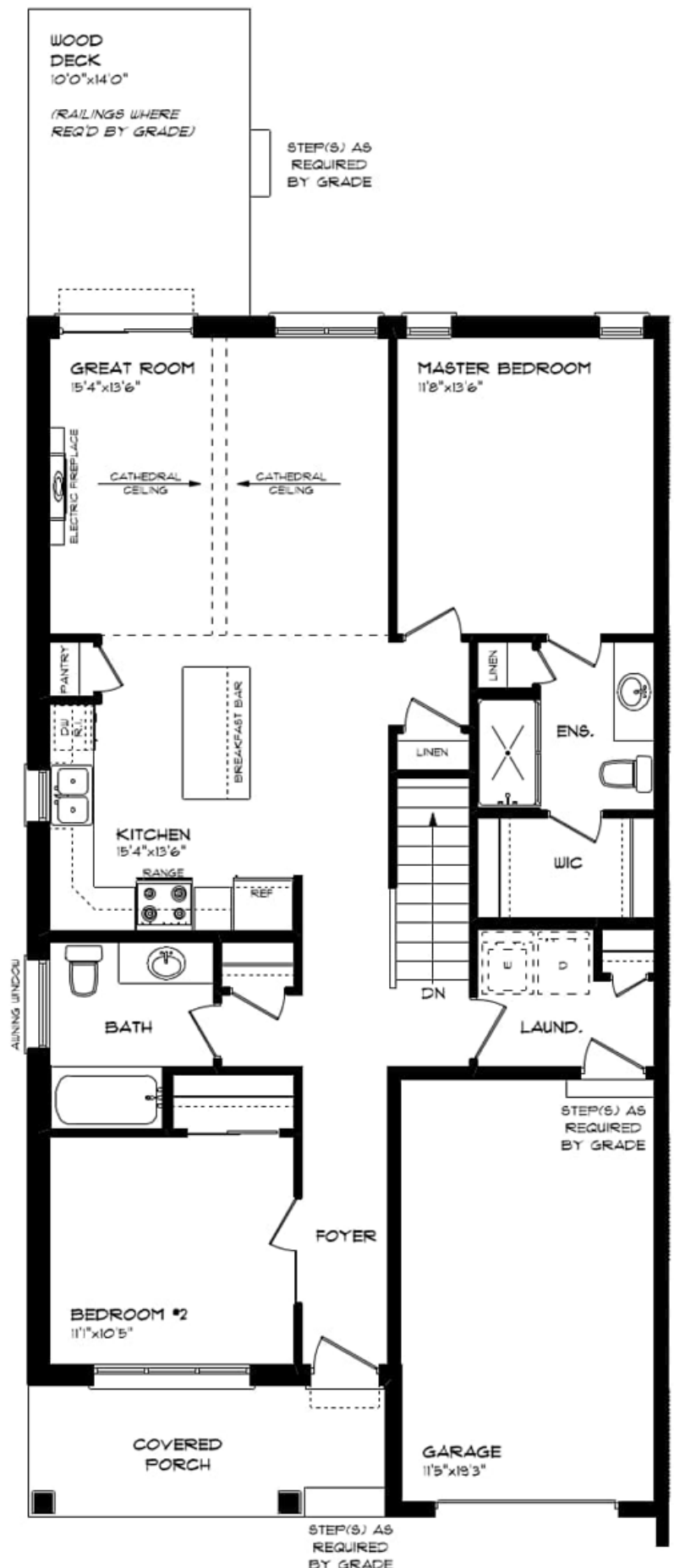
MAIN FLOOR LAUNDRY

QUARTZ COUNTERTOPS

KITCHEN BACKSPLASH

DOUBLE CAR GARAGE

ELECTRIC FIREPLACE



# WILLOW RUN

2 HEMLOCK CRESCENT

## LOWER LEVEL

606 sq ft

### features

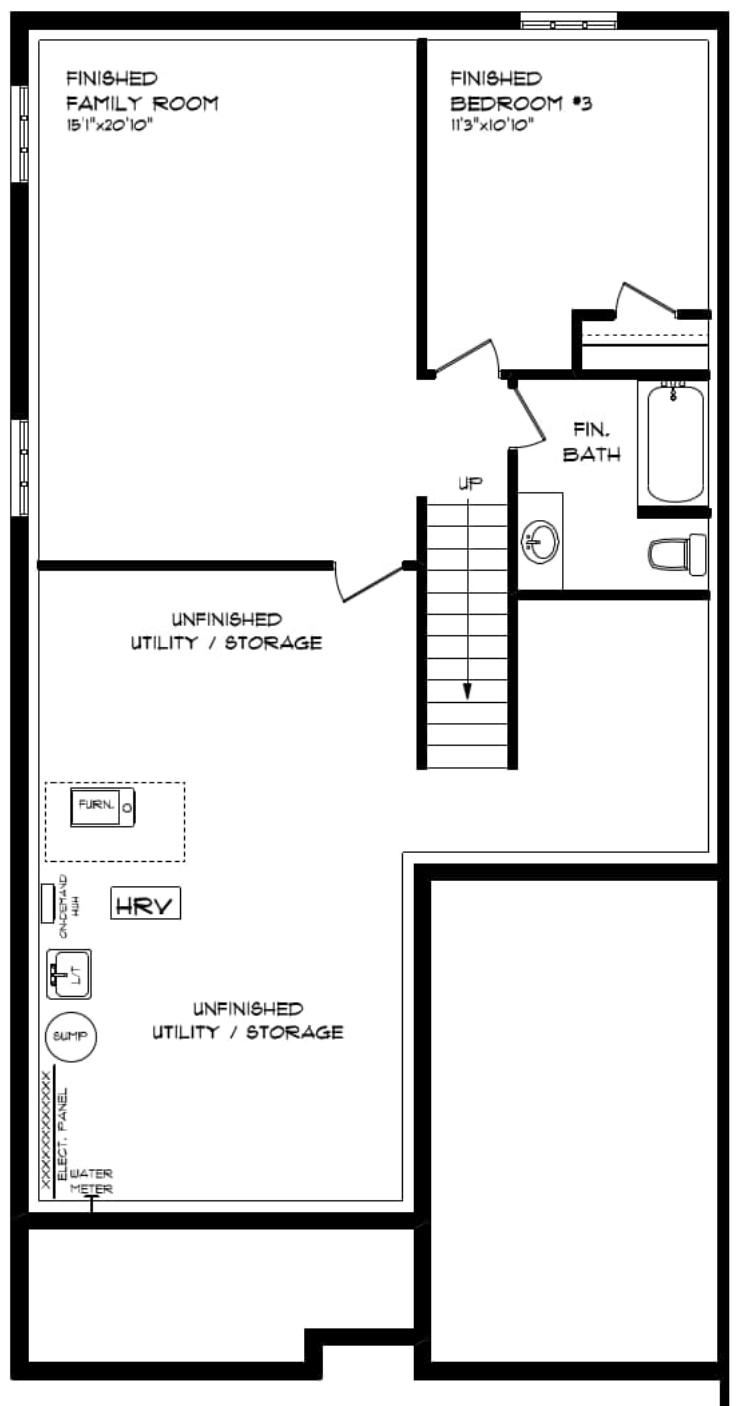
CARPET FLOORING

AIR CONDITIONING

GAS FURNACE WITH HRV

HUMIDIFIER

NEW HOME WARRANTY





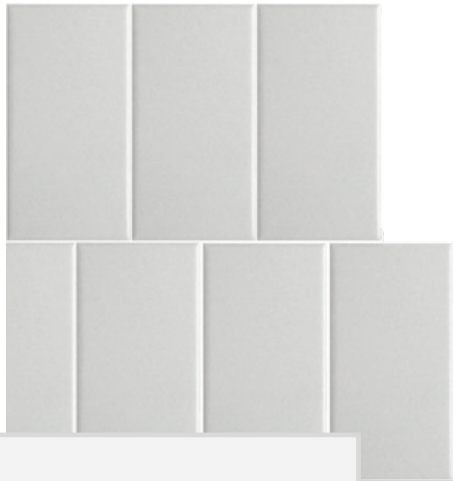
# WILLOW RUN

2 HEMLOCK CRESCENT



# INTERIOR FINISHES

KITCHEN BACKSPLASH



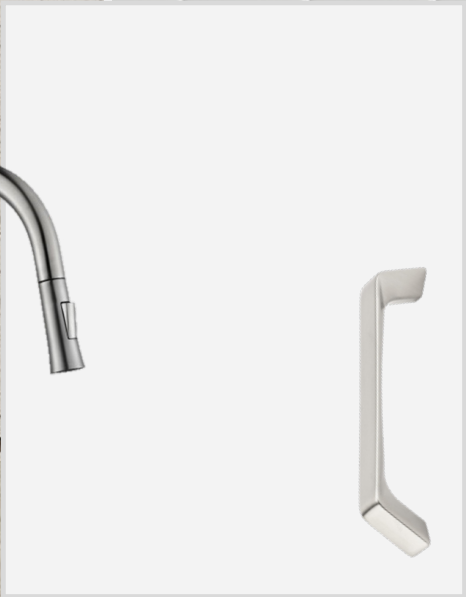
QUARTZ KITCHEN COUNTERTOPS



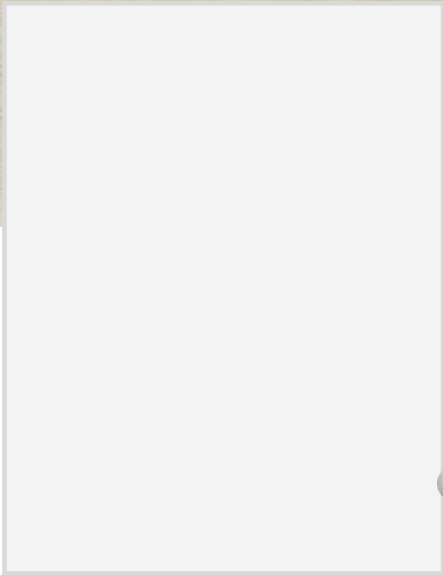
LUXURY VINYL PLANK



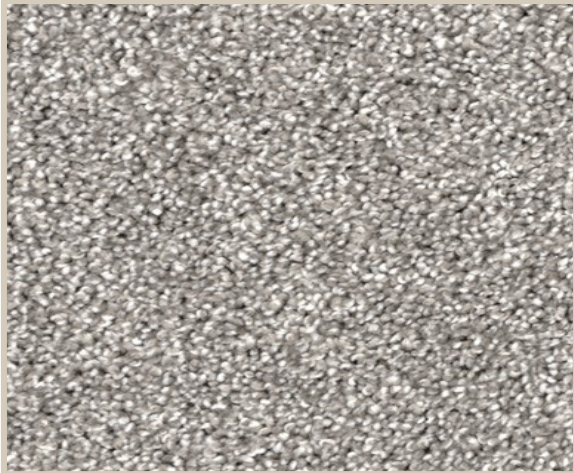
MELAMINE KITCHEN  
CABINETRY



MELAMINE VANITY  
CABINETRY



LAMINATE VANITY  
COUNTERTOPS



CARPET