

WILLOW RUN

29 HEMLOCK CRES

AYLMER | ONTARIO

INVENTORY HOME



THE DETAILS

| | |
|--------------|---------------|
| PRICE | \$755,000 |
| CLOSING DATE | Available Now |
| LOT NUMBER | 51 |
| BEDROOMS | 4 |
| BATHS | 2.5 |
| GARAGE | 2 |
| DRIVEWAY | 18' |
| SQ FT | 1,923 |
| MODEL | Vermont |

Emma Smith SALES PROFESSIONAL

519.409.1474 | emma.smith@hayhoehomes.com



WWW.HAYHOEHOMES.COM

Price, products, colours & features are subject to change without notice. E. & O. E. DATE MAY 1, 2025

HAYHOETM
— HOMES —

WILLOW RUN

SITE PLAN

29 HEMLOCK CRES | AYLMER ON



exterior features

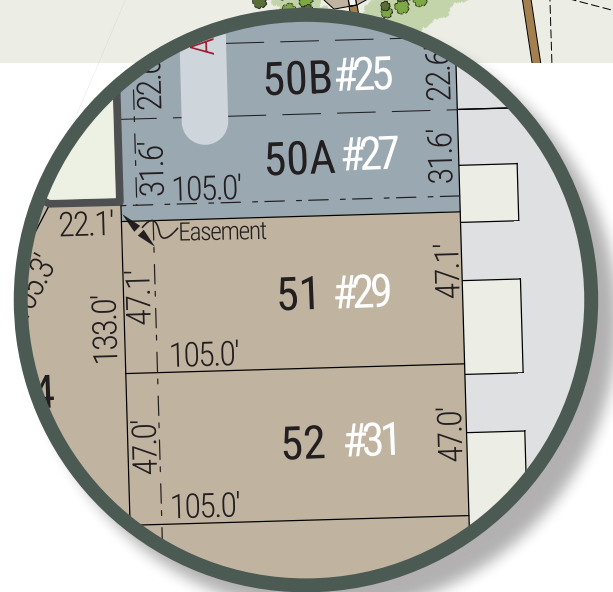
KEYLESS ENTRY

TREATED WOOD DECK

BBQ GAS LINE

ASPHALT DRIVEWAY

WALKING TRAILS



WILLOW RUN

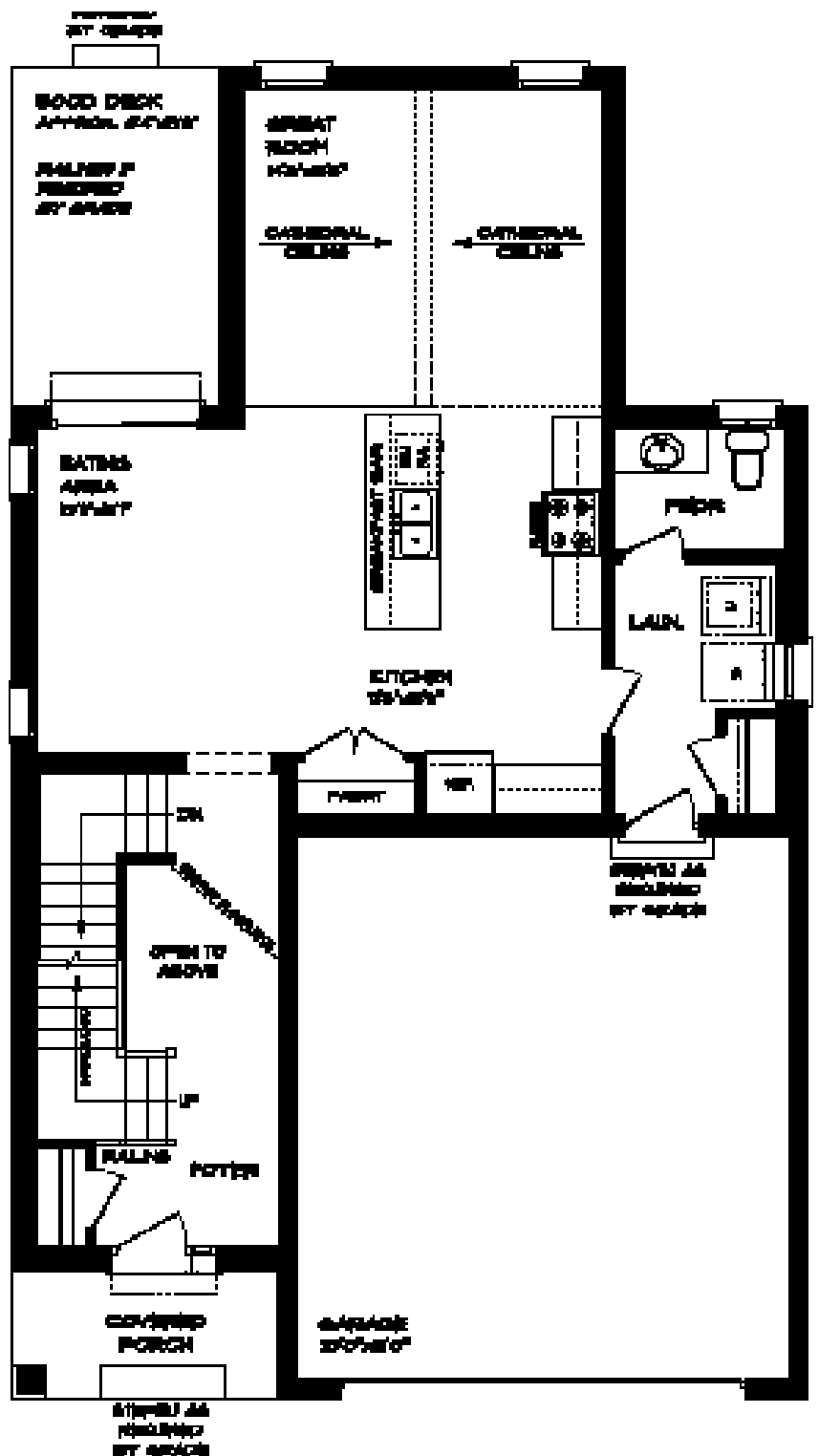
29 HEMLOCK CRES

MAIN FLOOR

978 sq ft

features

- MAIN FLOOR LAUNDRY
- QUARTZ COUNTERTOPS
- KITCHEN BACKSPLASH
- DOUBLE CAR GARAGE
- KITCHEN PANTRY
- TWO STOREY FOYER



WILLOW RUN

29 HEMLOCK CRES

SECOND FLOOR

945 sq ft

features

PROFESSIONALLY DESIGNED

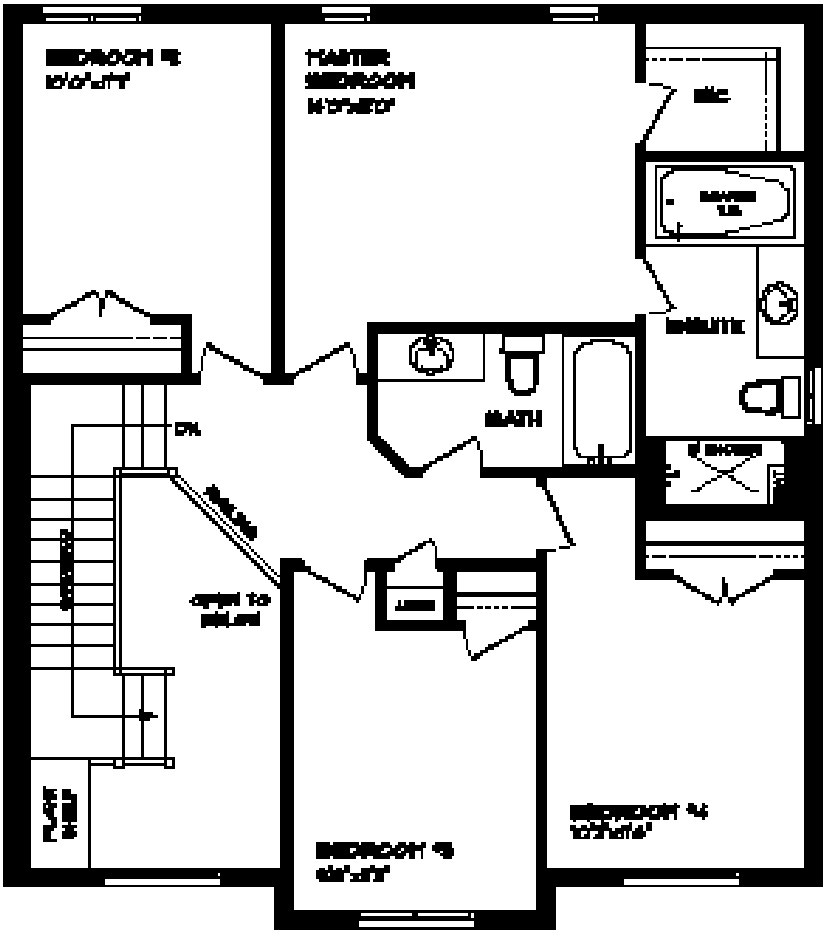
SOAKER TUB

CARPET FLOORING

CERAMIC TILE FLOORING

WALK-IN CLOSET

HARDWOOD STAIRS



WILLOW RUN

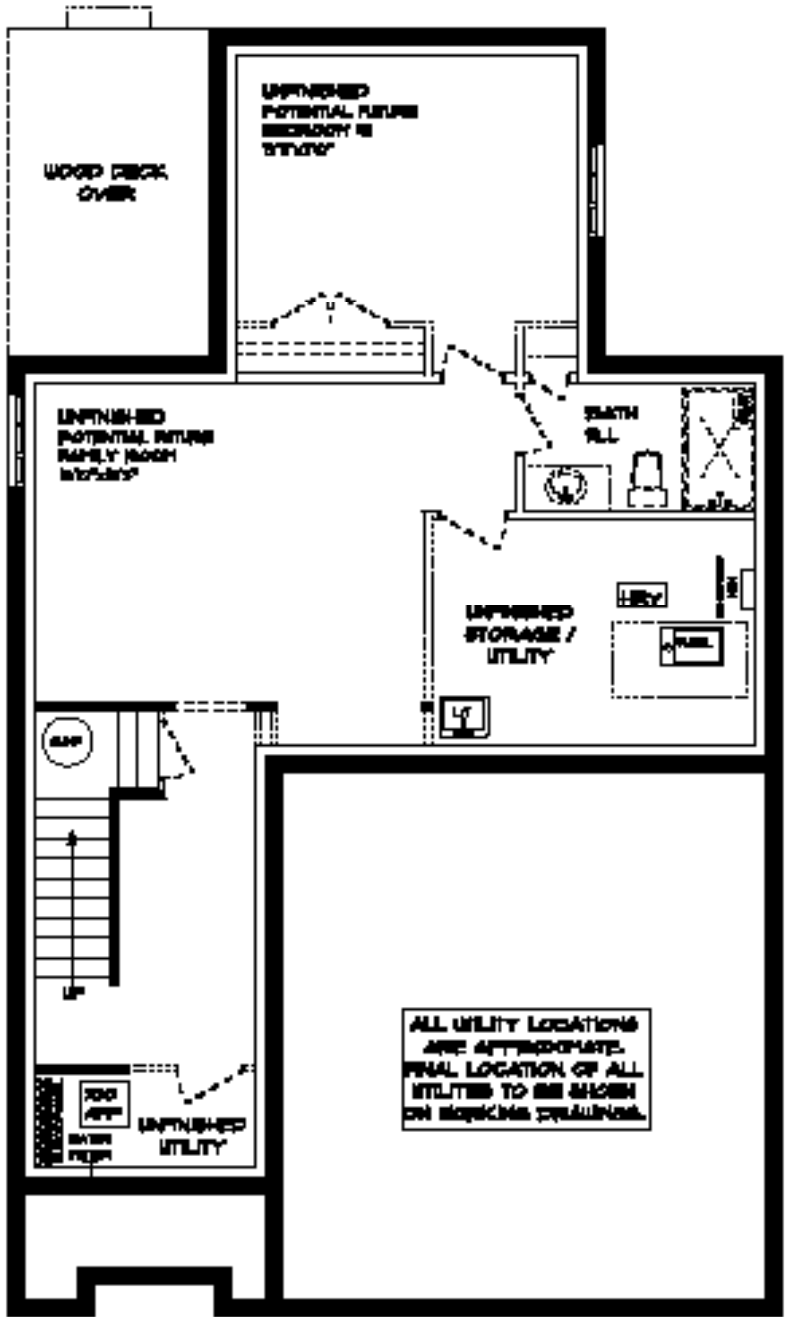
29 HEMLOCK CRES

LOWER LEVEL

Unfinished

features

- AIR CONDITIONING
- GAS FURNACE WITH HRV
- HUMIDIFIER
- LAUNDRY TUB
- NEW HOME WARRANTY



WILLOW
RUN

29 HEMLOCK CRES

EXTERIOR FINISHES

SHINGLES



SIDING

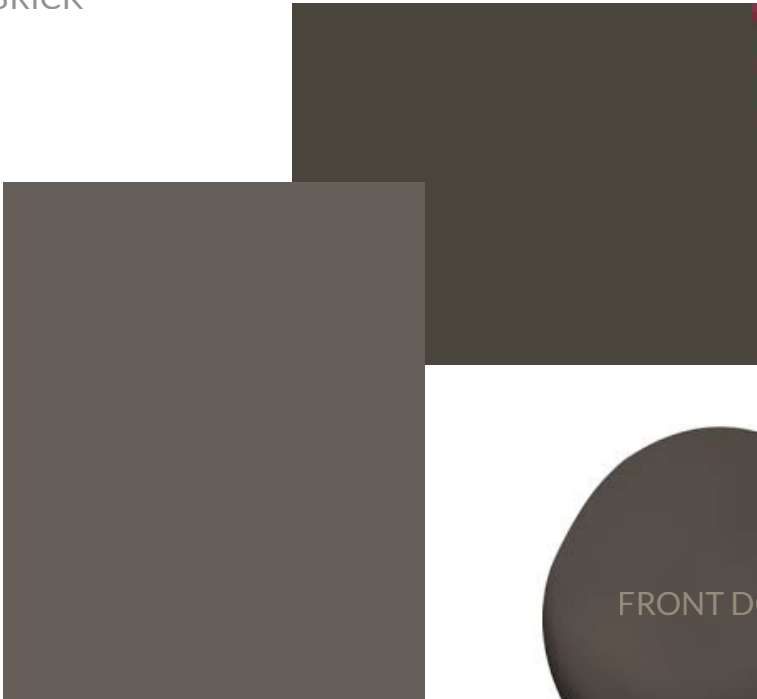


SIDING



BRICK

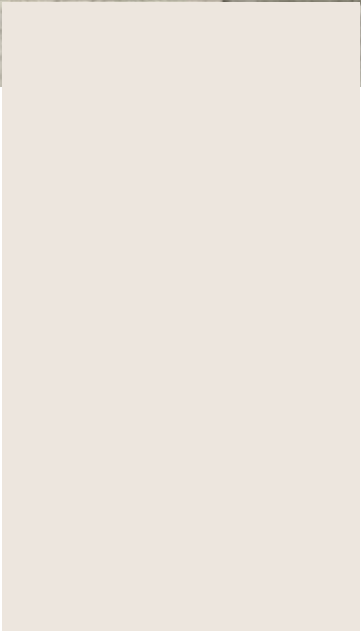
WINDOWS



GARAGE DOOR



FRONT DOOR



ALUMINUM

WILLOW RUN

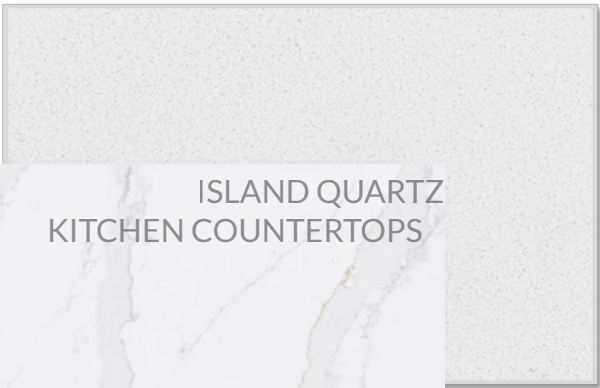
29 HEMLOCK CRES

INTERIOR FINISHES

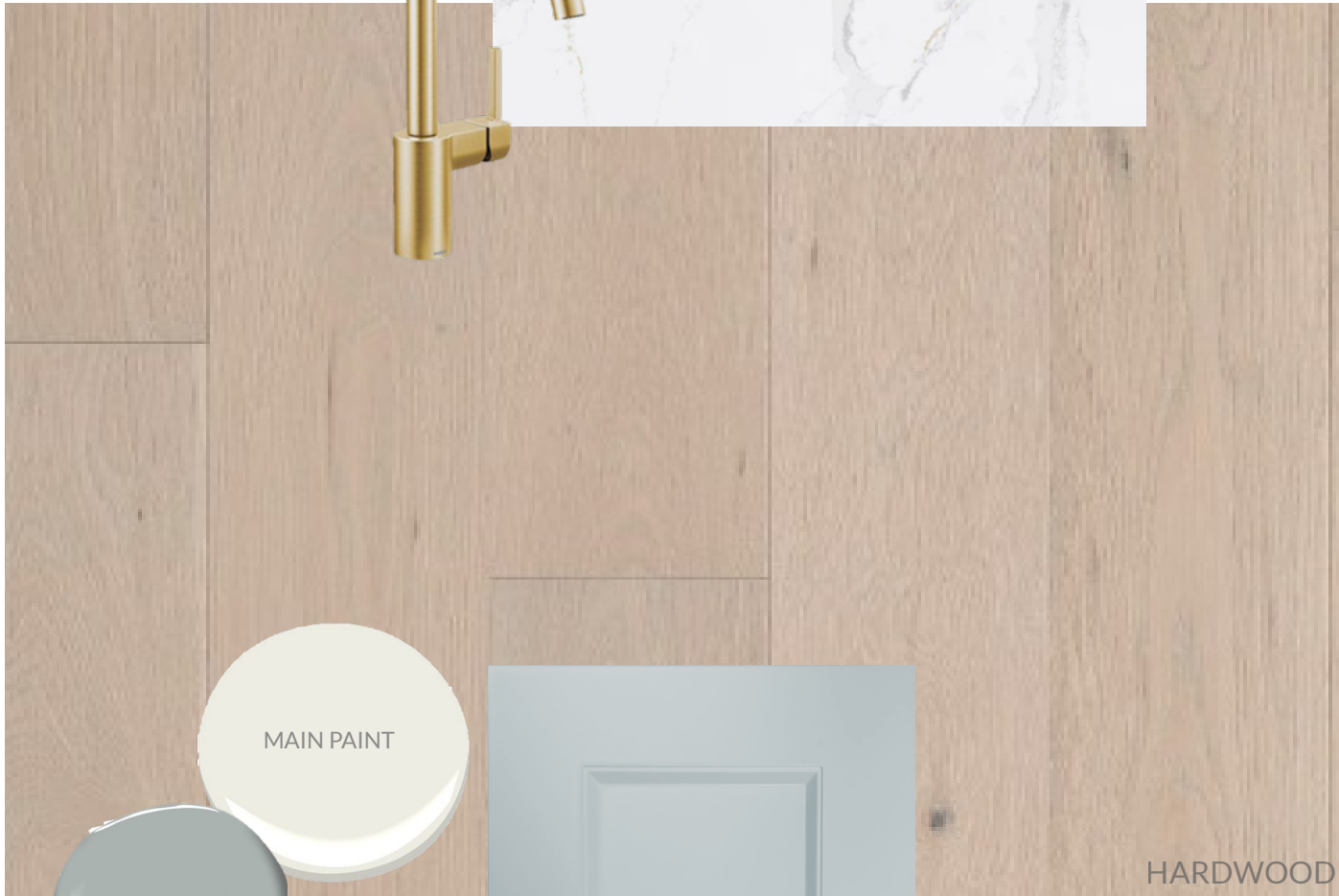
KITCHEN BACKSPLASH



PERIMETER QUARTZ
KITCHEN COUNTERTOPS



ISLAND QUARTZ
KITCHEN COUNTERTOPS



HARDWOOD

MAIN PAINT



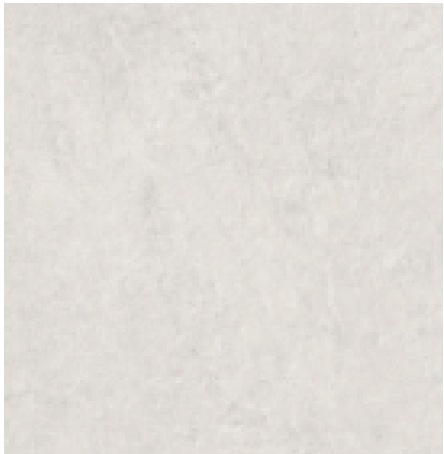
POWDER PAINT



PAINTED KITCHEN LOWERS



PAINTED KITCHEN UPPERS



MAIN FLOOR TILE



WILLOW RUN

29 HEMLOCK CRES

INTERIOR FINISHES

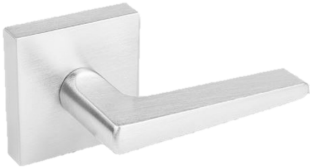
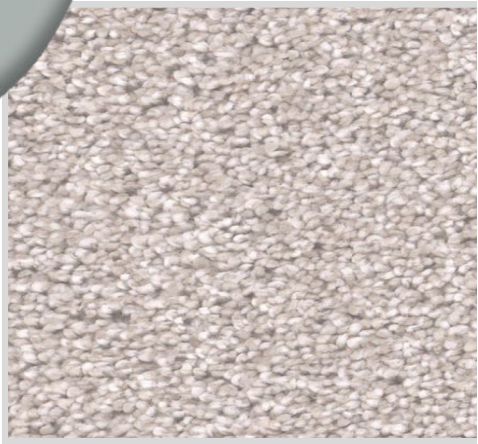
INTERIOR DOOR STYLE



MASTER BEDRM PAINT



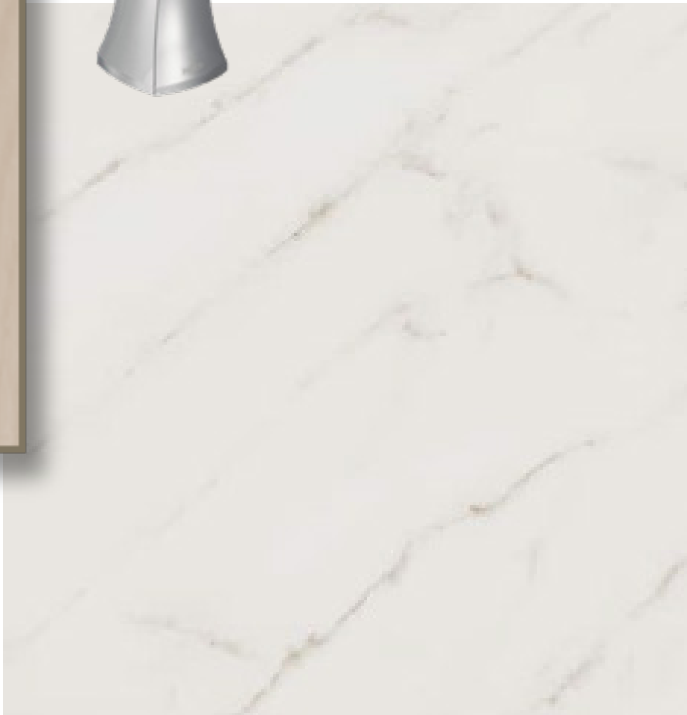
CARPET



VANITY LAMINATE COUNTERTOP



STAINED VANITY CABINETRY



ENSUITE & MAIN BATH TILE