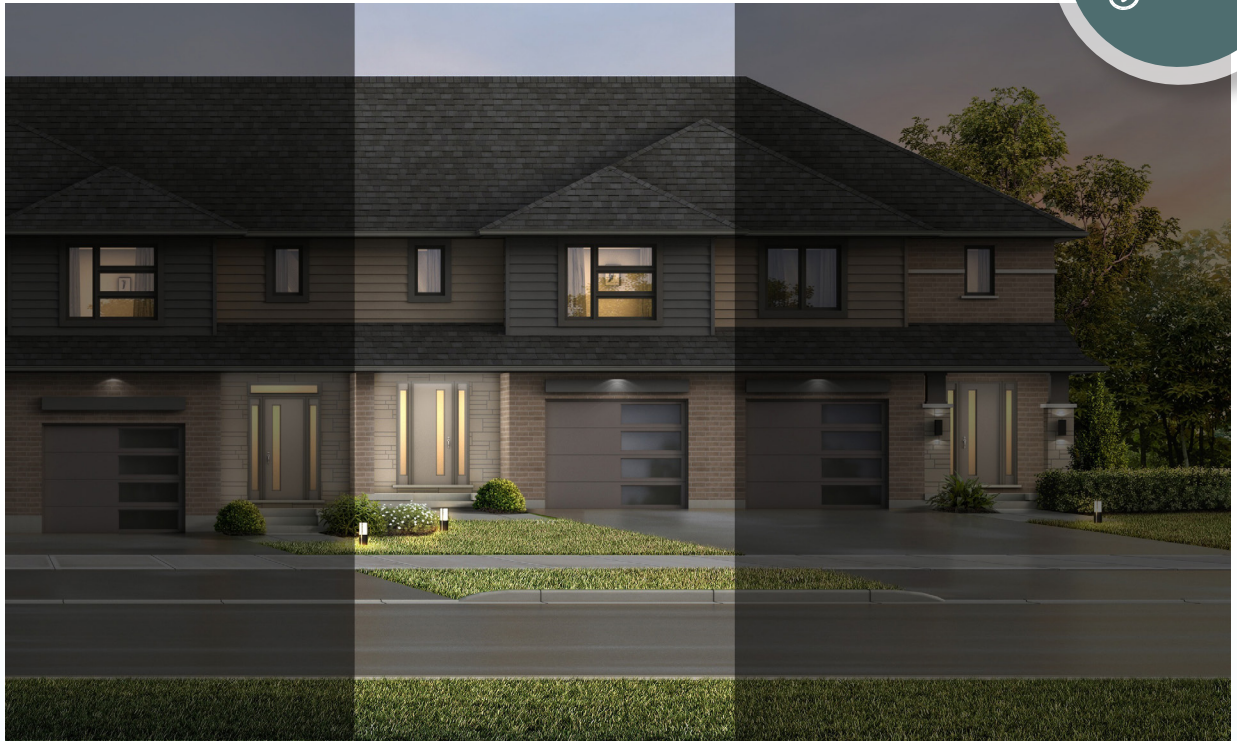


ROLLING MEADOWS

TOWNHOME

61 Woodcock Drive | Tillsonburg ON

PREMIUM
SPECS



THE DETAILS

PRICE	\$566,500
CLOSING DATE	February 5, 2026
LOT NUMBER	10E
BEDROOMS	4
BATHS	3.5
GARAGE	1
DRIVEWAY	12' 4"
SQ FT	2,443
MODEL	Tifton

Laura Babcock SALES PROFESSIONAL

519.520.0539 | laura.babcock@hayhoehomes.com



ROLLING MEADOWS

SITE PLAN

61 Woodcock Drive | Tillsonburg ON



exterior features

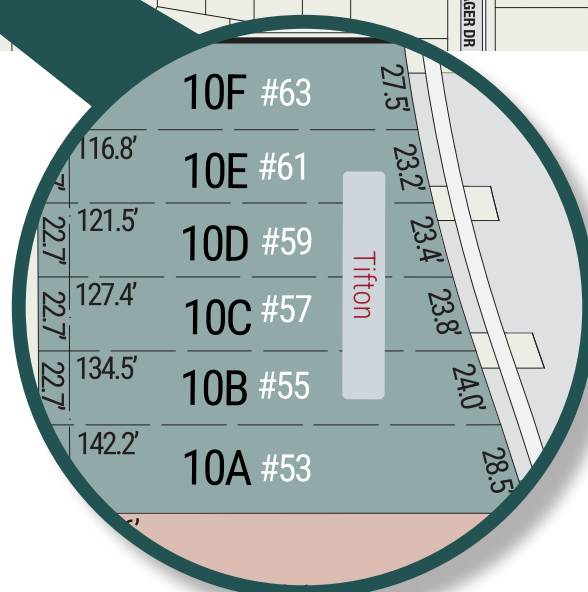
KEYLESS ENTRY

TREATED WOOD DECK

BBQ GAS LINE

ASPHALT DRIVEWAY

WALKING TRAILS



ROLLING MEADOWS

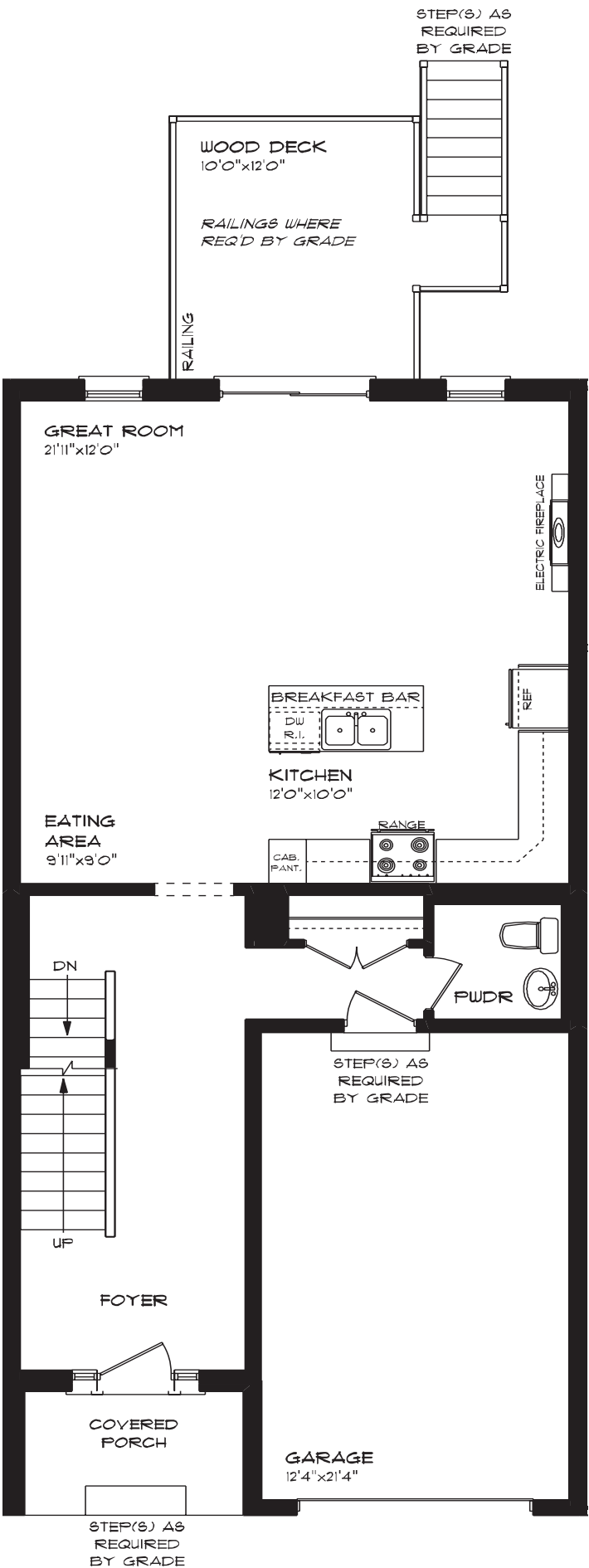
61 Woodcock Drive | Tillsonburg ON

MAIN FLOOR

836 sq ft

features

- QUARTZ COUNTERTOPS
- KITCHEN BACKSPLASH
- LUXURY VINYL PLANK FLOORING
- KITCHEN ISLAND
- 8' MAIN FLOOR CEILING
- SINGLE CAR GARAGE
- KITCHEN PANTRY



ROLLING MEADOWS

61 Woodcock Drive | Tillsonburg ON

SECOND FLOOR

1006 sq ft

features

PROFESSIONALLY DESIGNED

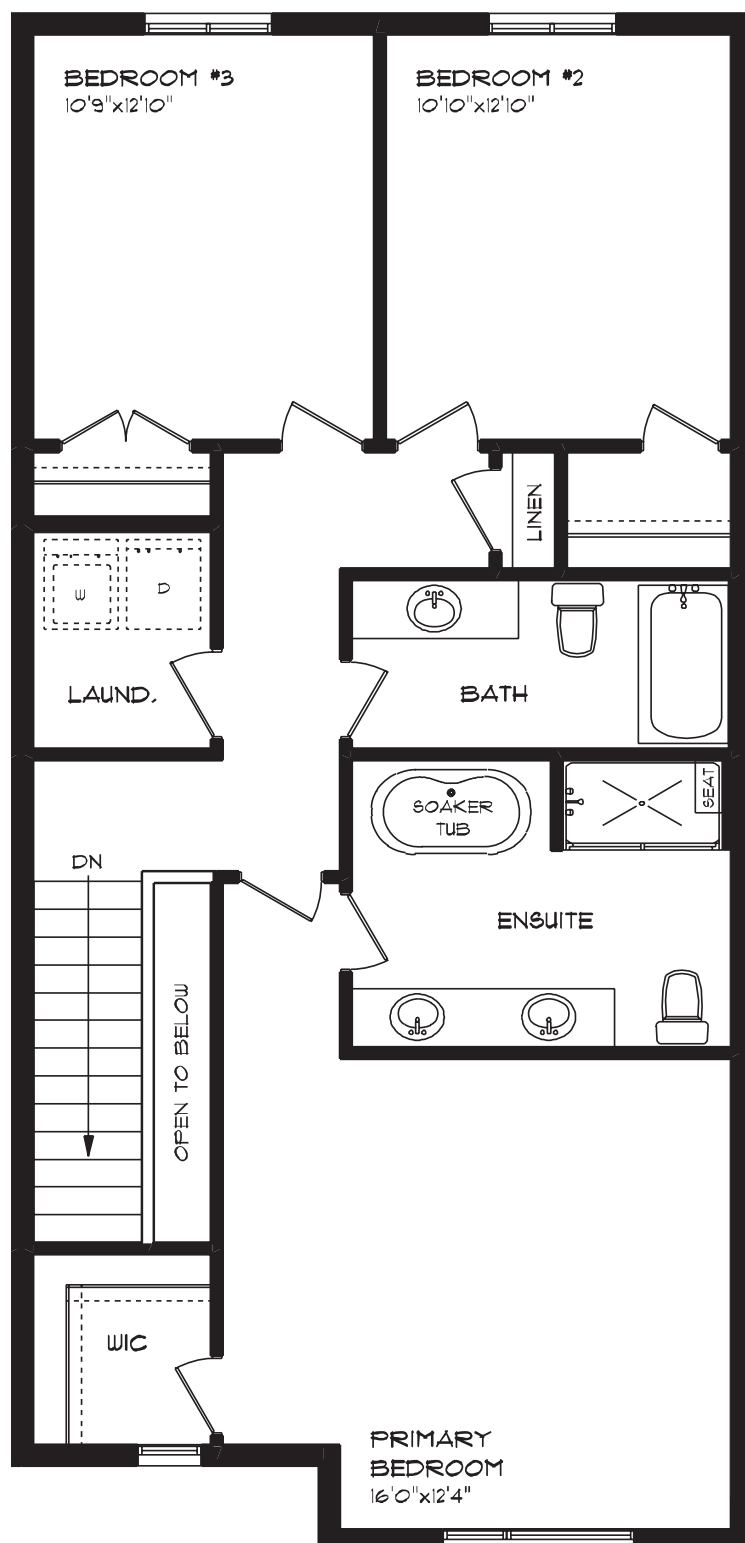
LUXURY VINYL PLANK FLOORING

CARPET FLOORING

SECOND FLOOR LAUNDRY

ENSUITE BATH

WALK-IN CLOSET



ROLLING MEADOWS

61 Woodcock Drive | Tillsonburg ON

LOWER LEVEL

601 sq ft

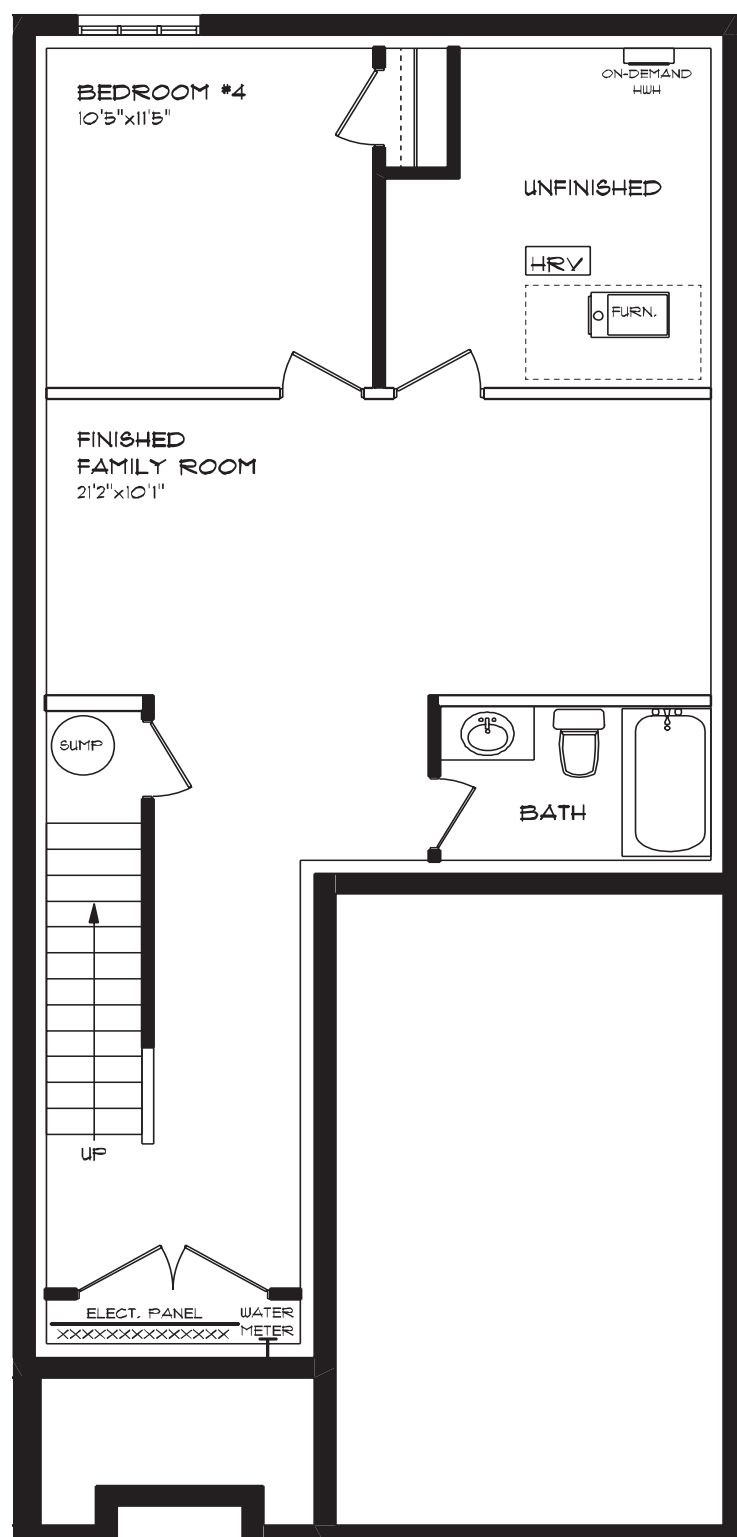
features

AIR CONDITIONING

GAS FURNACE WITH HRV

HUMIDIFIER

NEW HOME WARRANTY



ROLLING MEADOWS

61 Woodcock Drive | Tillsonburg ON

INTERIOR FINISHES



KITCHEN BACKSPLASH



QUARTZ KITCHEN COUNTERTOPS



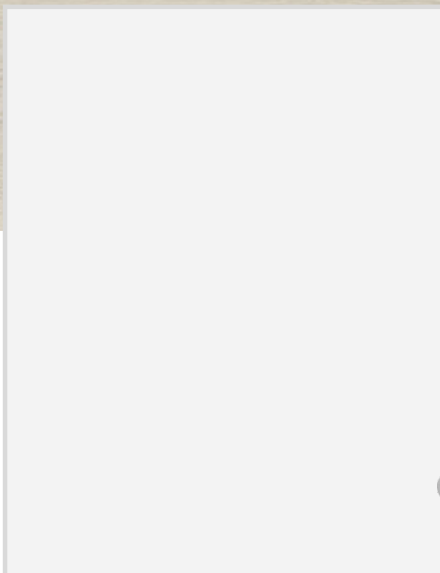
LUXURY VINYL PLANK



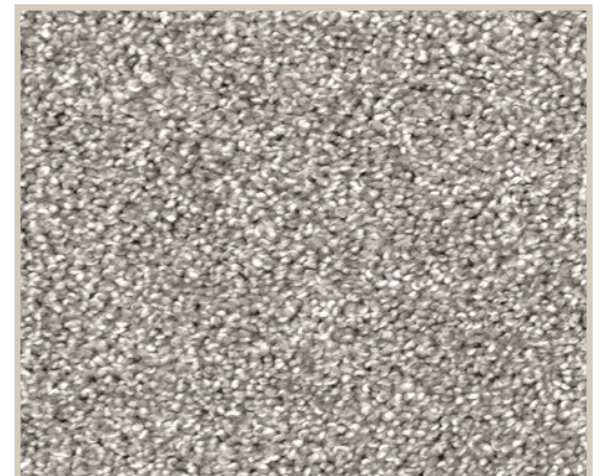
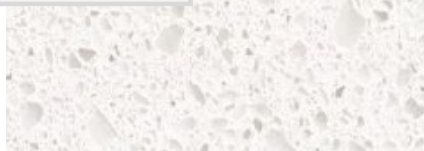
MELAMINE KITCHEN CABINETRY



MELAMINE VANITY CABINETRY



LAMINATE VANITY COUNTERTOPS



CARPET