

ROLLING MEADOWS

TOWNHOME

70 Woodcock Drive | Tillsonburg ON

ESSENTIAL
SPECS



THE DETAILS

| | |
|--------------|---------------|
| PRICE | \$514,000 |
| CLOSING DATE | April 8, 2026 |
| LOT NUMBER | 45C |
| BEDROOMS | 3 |
| BATHS | 2.5 |
| GARAGE | 1 |
| DRIVEWAY | 17' |
| SQ FT | 1,620 |
| MODEL | Shelton |

Laura Babcock SALES PROFESSIONAL

519.520.0539 | laura.babcock@hayhoehomes.com



WWW.HAYHOEHOMES.COM

Price, products, colours & features are subject to change without notice. E. & O. E. JULY 24, 2025

HAYHOETM
HOMES

ROLLING MEADOWS

SITE PLAN

70 Woodcock Drive | Tillsonburg ON



exterior features

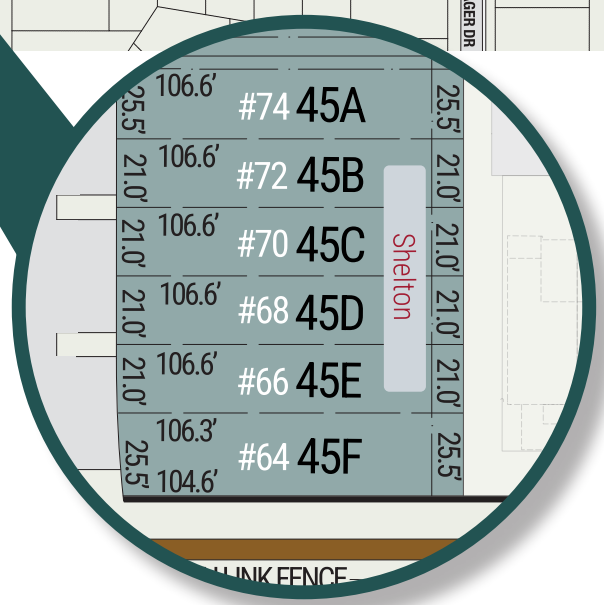
KEYLESS ENTRY

TREATED WOOD DECK

BBQ GAS LINE

ASPHALT DRIVEWAY

WALKING TRAILS



ROLLING MEADOWS

70 Woodcock Drive | Tillsonburg ON

MAIN FLOOR

766 sq ft

features

QUARTZ COUNTERTOPS

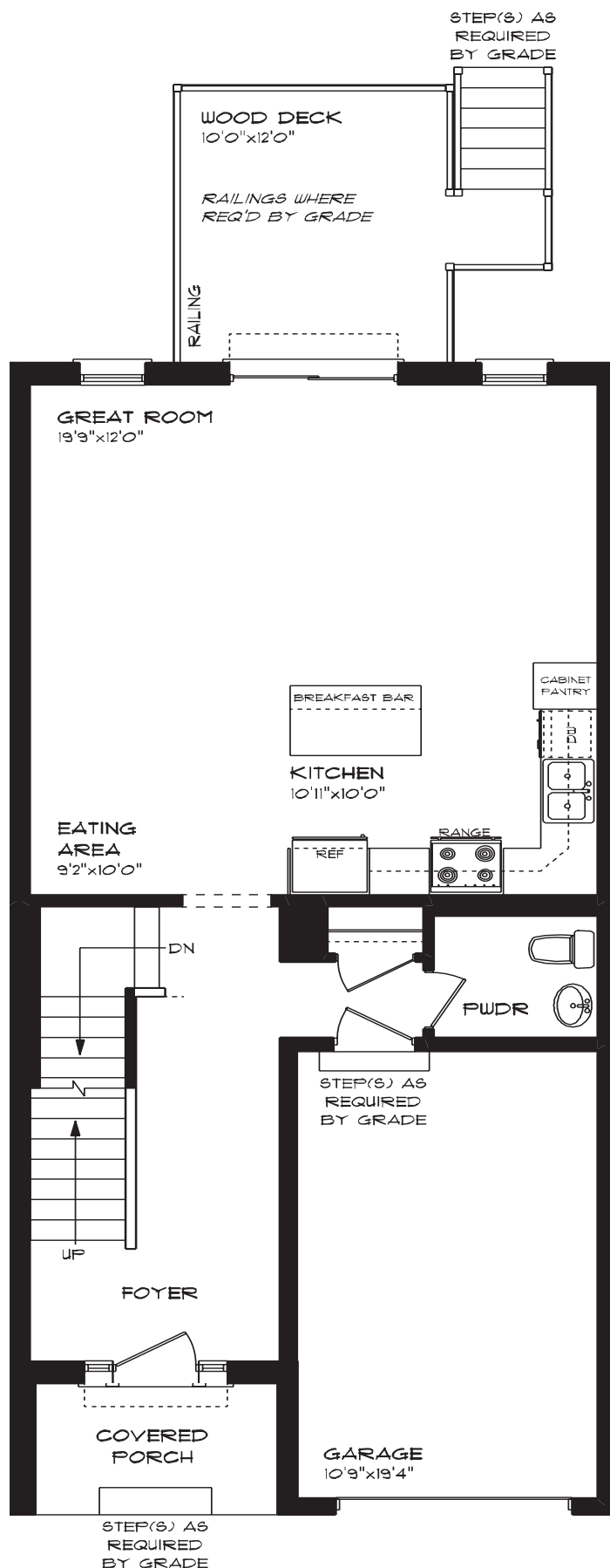
LUXURY VINYL PLANK FLOORING

KITCHEN ISLAND

9' MAIN FLOOR CEILING

SINGLE CAR GARAGE

KITCHEN PANTRY



ROLLING MEADOWS

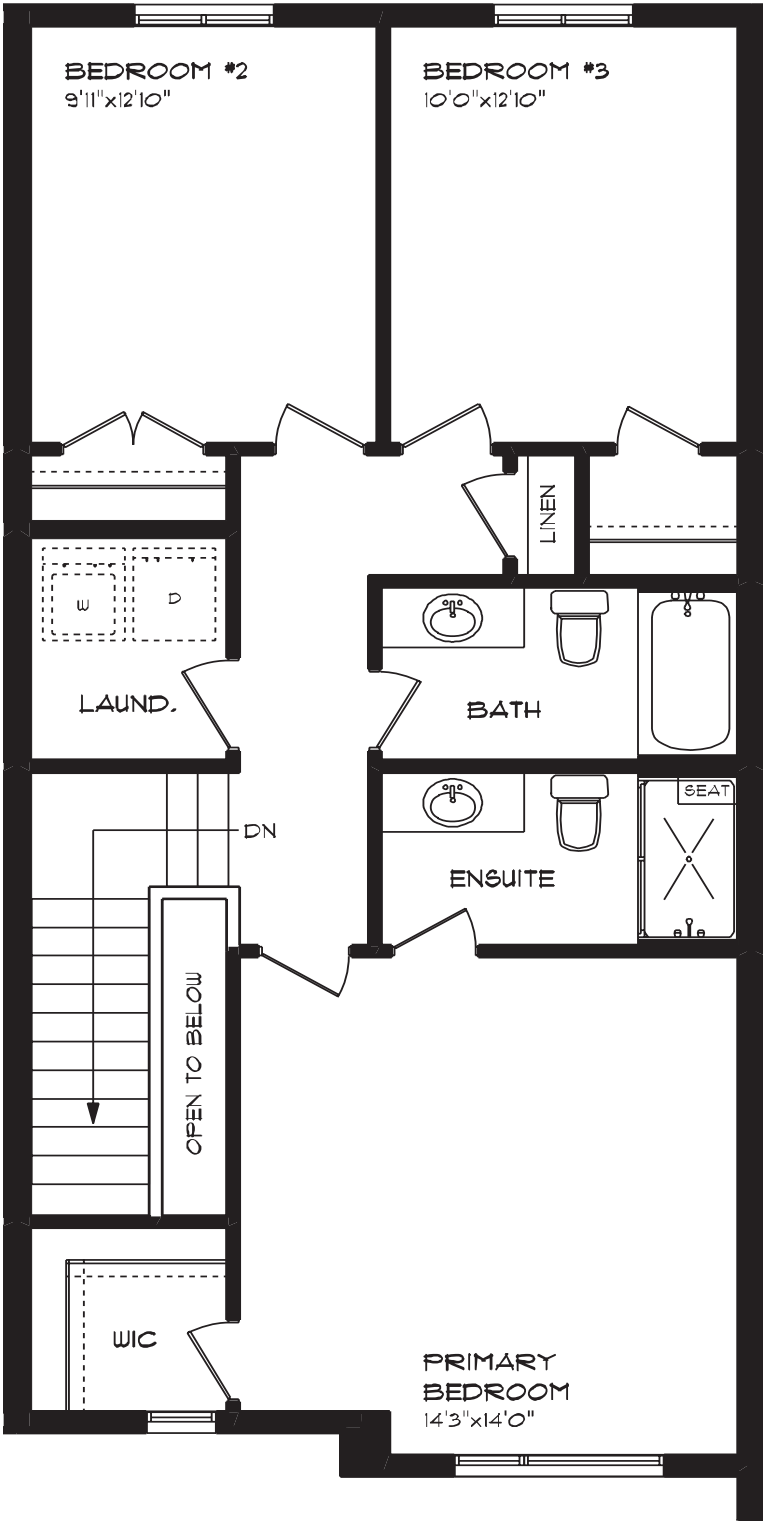
70 Woodcock Drive | Tillsonburg ON

SECOND FLOOR

854 sq ft

features

- PROFESSIONALLY DESIGNED
- LUXURY VINYL PLANK FLOORING
- CARPET FLOORING
- SECOND FLOOR LAUNDRY
- ENSUITE BATH
- WALK-IN CLOSET



ROLLING MEADOWS

70 Woodcock Drive | Tillsonburg ON

LOWER LEVEL

Unfinished

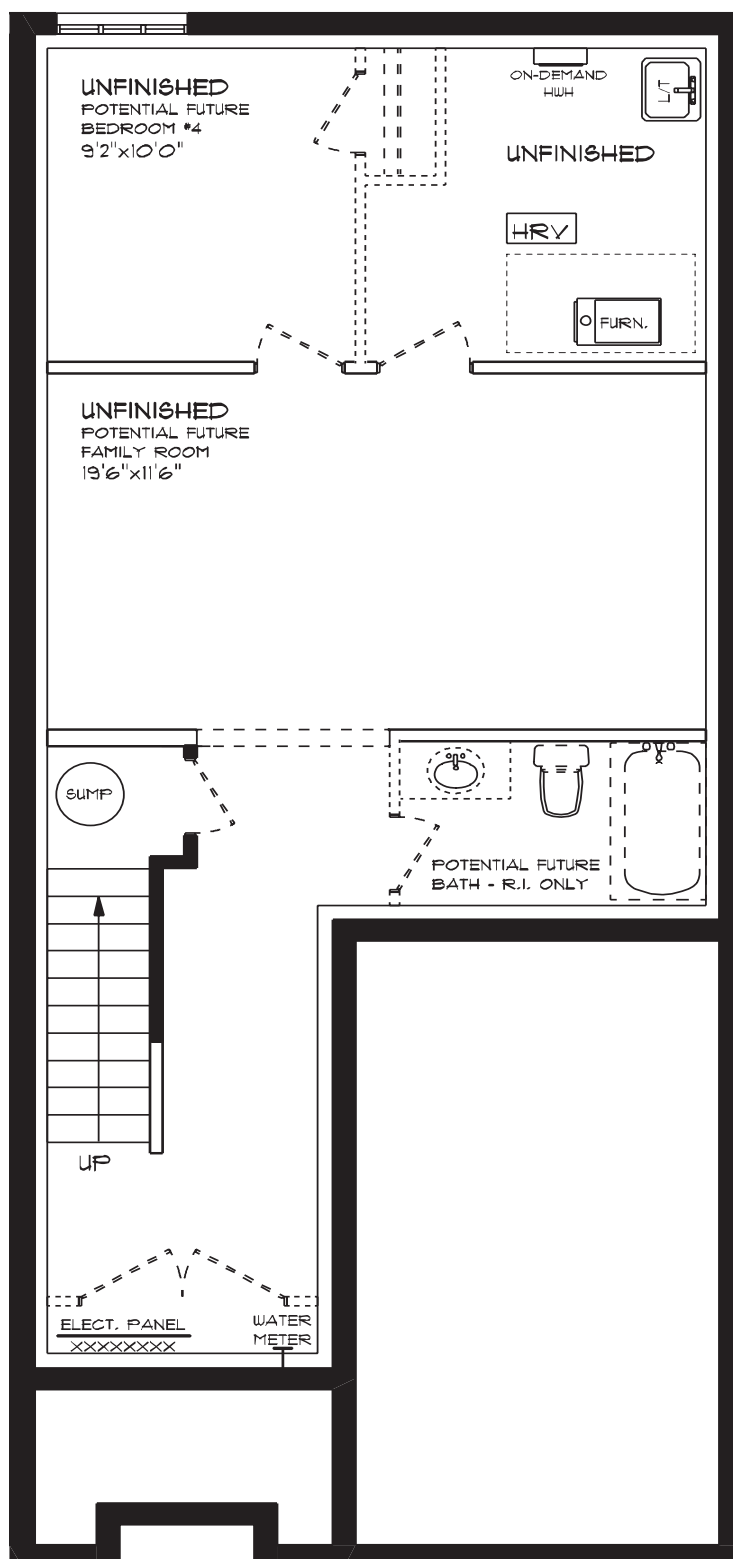
features

AIR CONDITIONING

GAS FURNACE WITH HRV

HUMIDIFIER

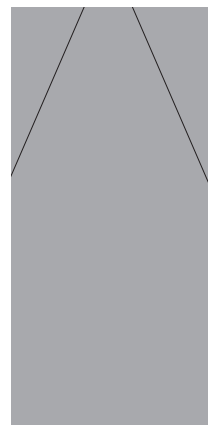
NEW HOME WARRANTY



ROLLING MEADOWS

70 Woodcock Drive | Tillsonburg ON

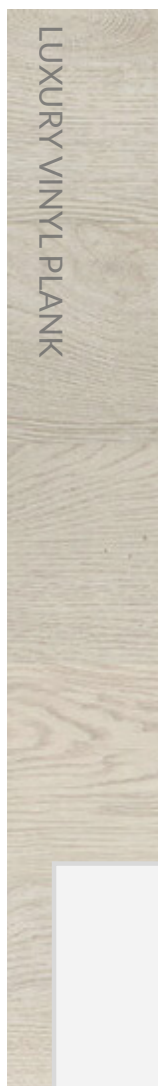
INTERIOR FINISHES



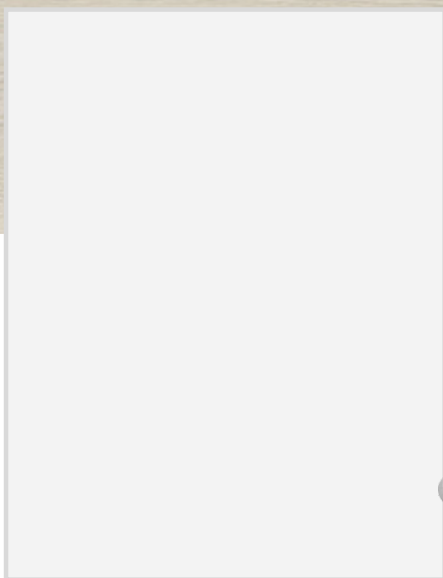
QUARTZ KITCHEN COUNTERTOPS



LUXURY VINYL PLANK



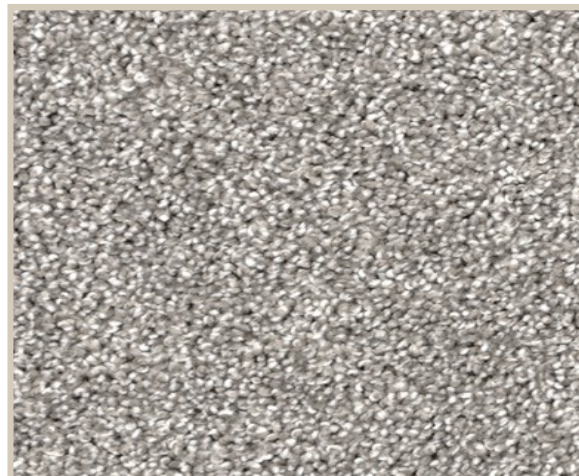
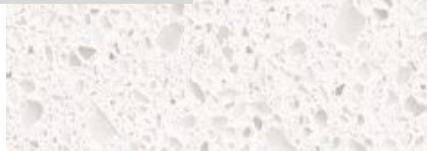
MELAMINE KITCHEN CABINETS



MELAMINE VANITY CABINETS



LAMINATE VANITY COUNTERTOPS



CARPET