

WILLOW RUN

103 WILLOW DRIVE

AYLMER | ONTARIO

TOWNHOME



THE DETAILS

PRICE \$529,000

CLOSING DATE Jul. 14, 2025

LOT NUMBER 5A

BEDROOMS 3

BATHS 2.5

GARAGE 1

DRIVEWAY 17'

SQ FT 1,852

MODEL Townhome

Emma Smith SALES PROFESSIONAL

519.409.1474 | emma.smith@hayhoehomes.com

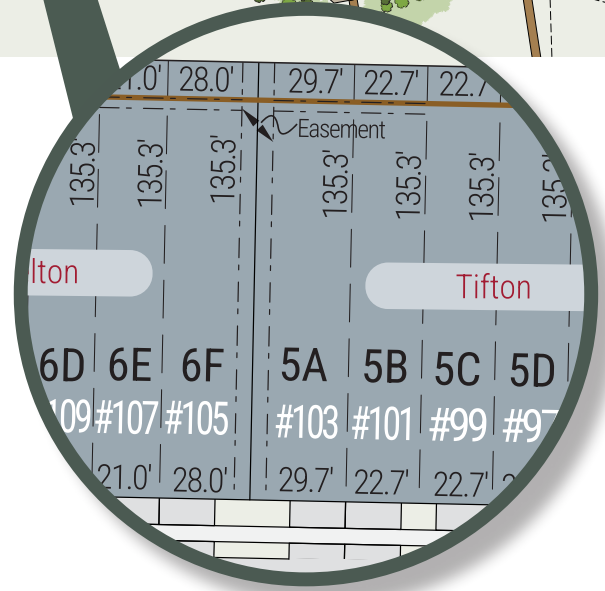


[WWW.HAYHOEHOMES.COM](http://www.hayhoehomes.com)

Price, products, colours & features are subject to change without notice. E. & O. E. DATE JANUARY 2025

HAYHOETM
— HOMES —

103 WILLOW DRIVE | AYLMER ON



WALKING TRAILS

WILLOW RUN

103 WILLOW DRIVE

MAIN FLOOR

852 sq ft

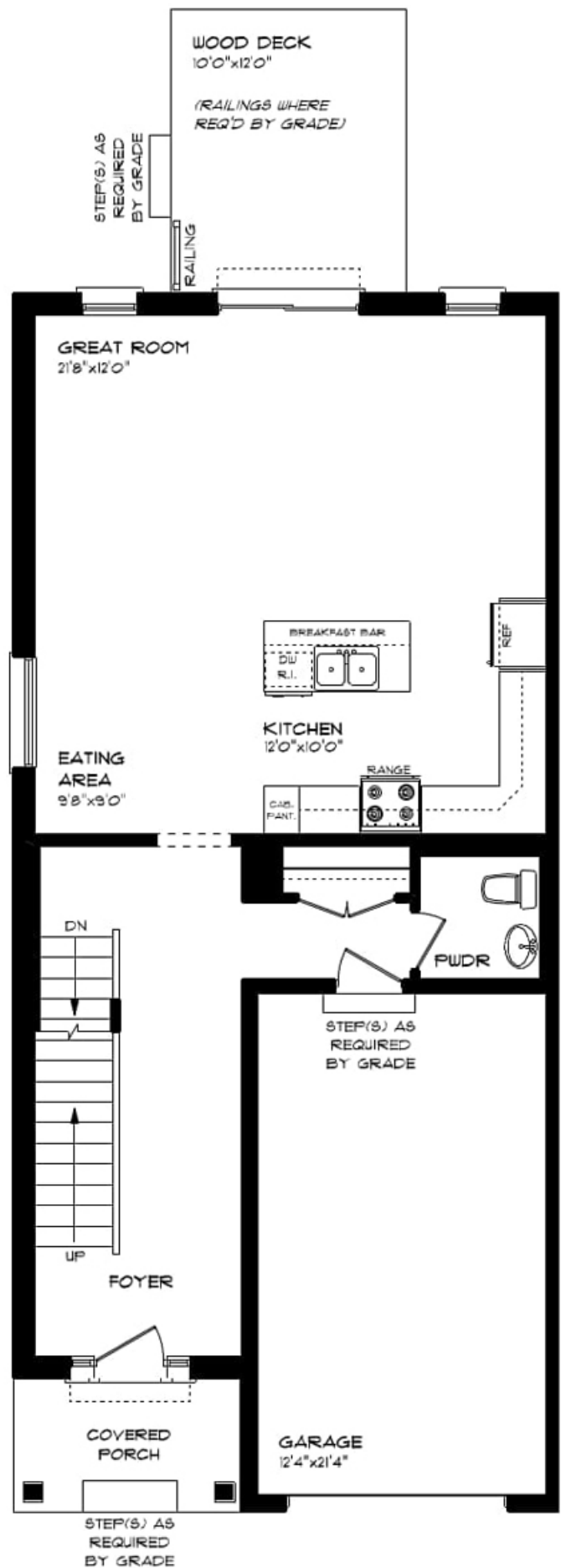
features

VINYL PLANK FLOORING

QUARTZ COUNTERTOPS

KITCHEN ISLAND

9' CEILINGS



WILLOW RUN

103 WILLOW DRIVE

SECOND FLOOR

1,000 sq ft

features

PROFESSIONALLY DESIGNED

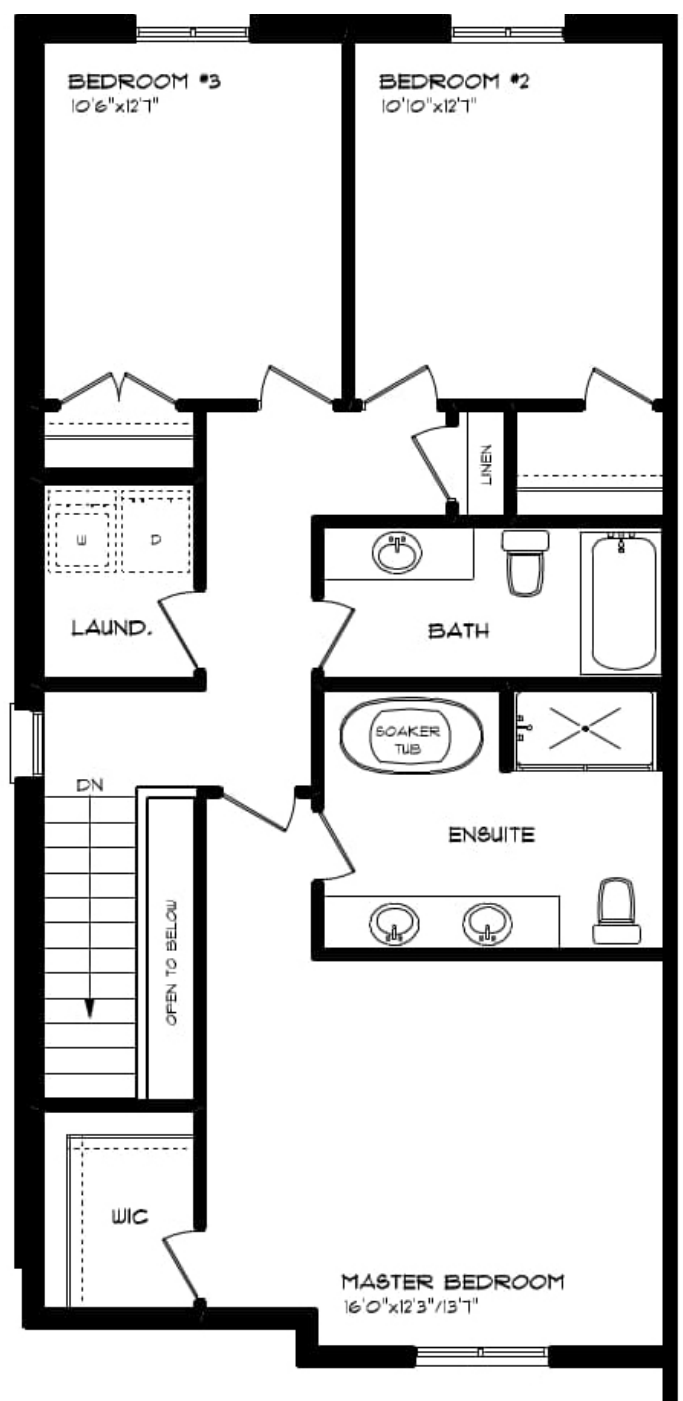
SOAKER TUB

CARPET FLOORING

VINYL PLANK FLOORING

WALK-IN CLOSET

DOUBLE ENSUITE VANITY



WILLOW RUN

103 WILLOW DRIVE

LOWER LEVEL UNFINISHED

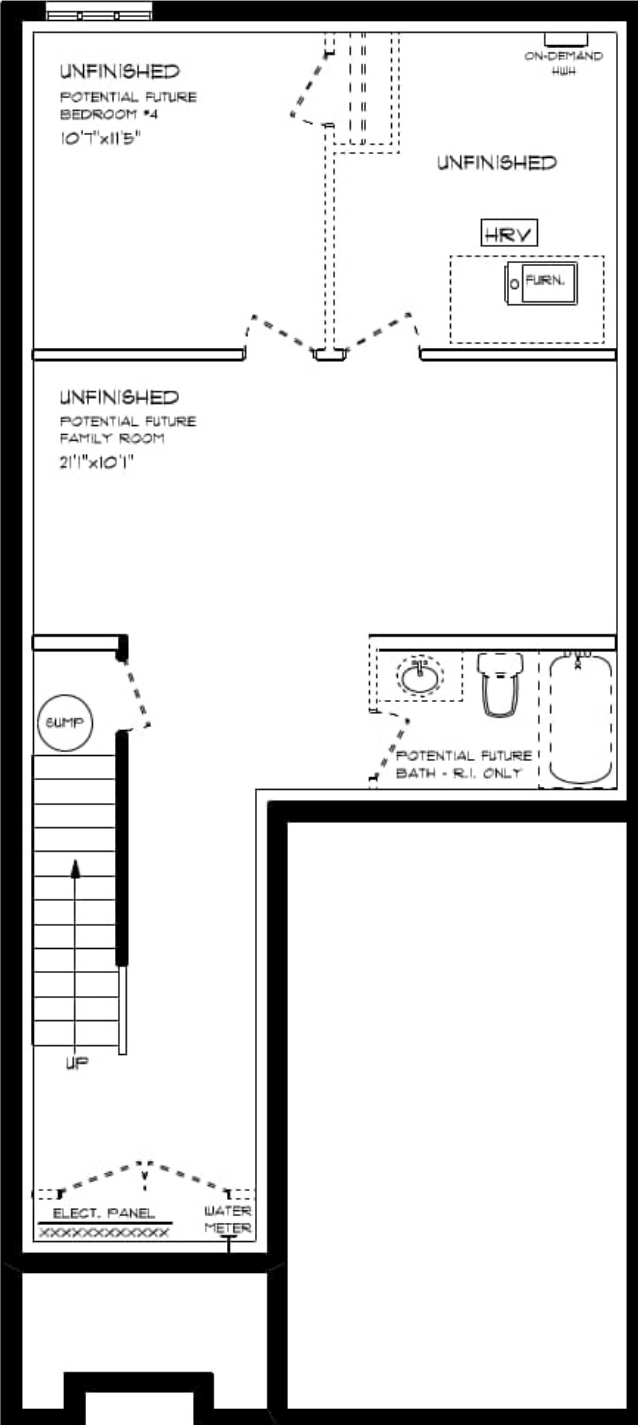
features

AIR CONDITIONING

GAS FURNACE WITH HRV

HUMIDIFIER

NEW HOME WARRANTY



WILLOW
RUN

103 WILLOW DRIVE

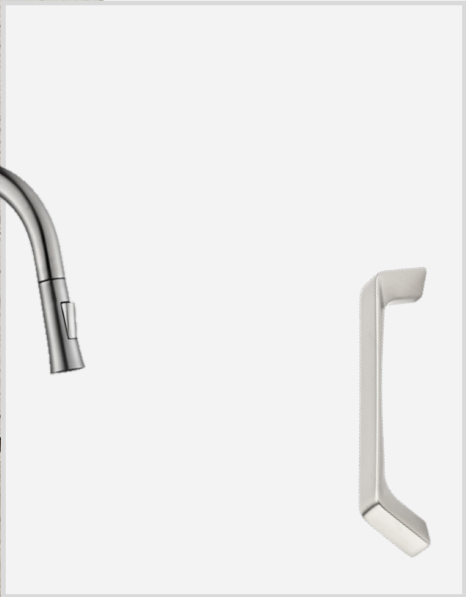
INTERIOR FINISHES



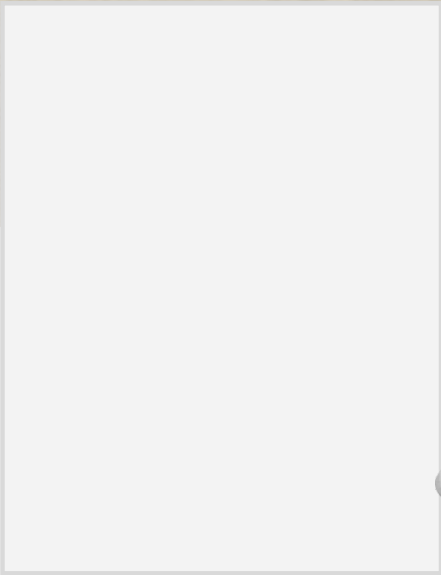
QUARTZ KITCHEN COUNTERTOPS



LUXURY VINYL PLANK



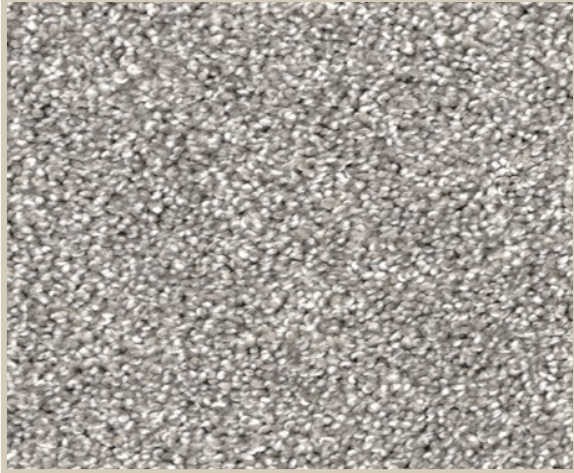
MELAMINE KITCHEN CABINETRY



MELAMINE VANITY CABINETRY



LAMINATE VANITY COUNTERTOPS



CARPET